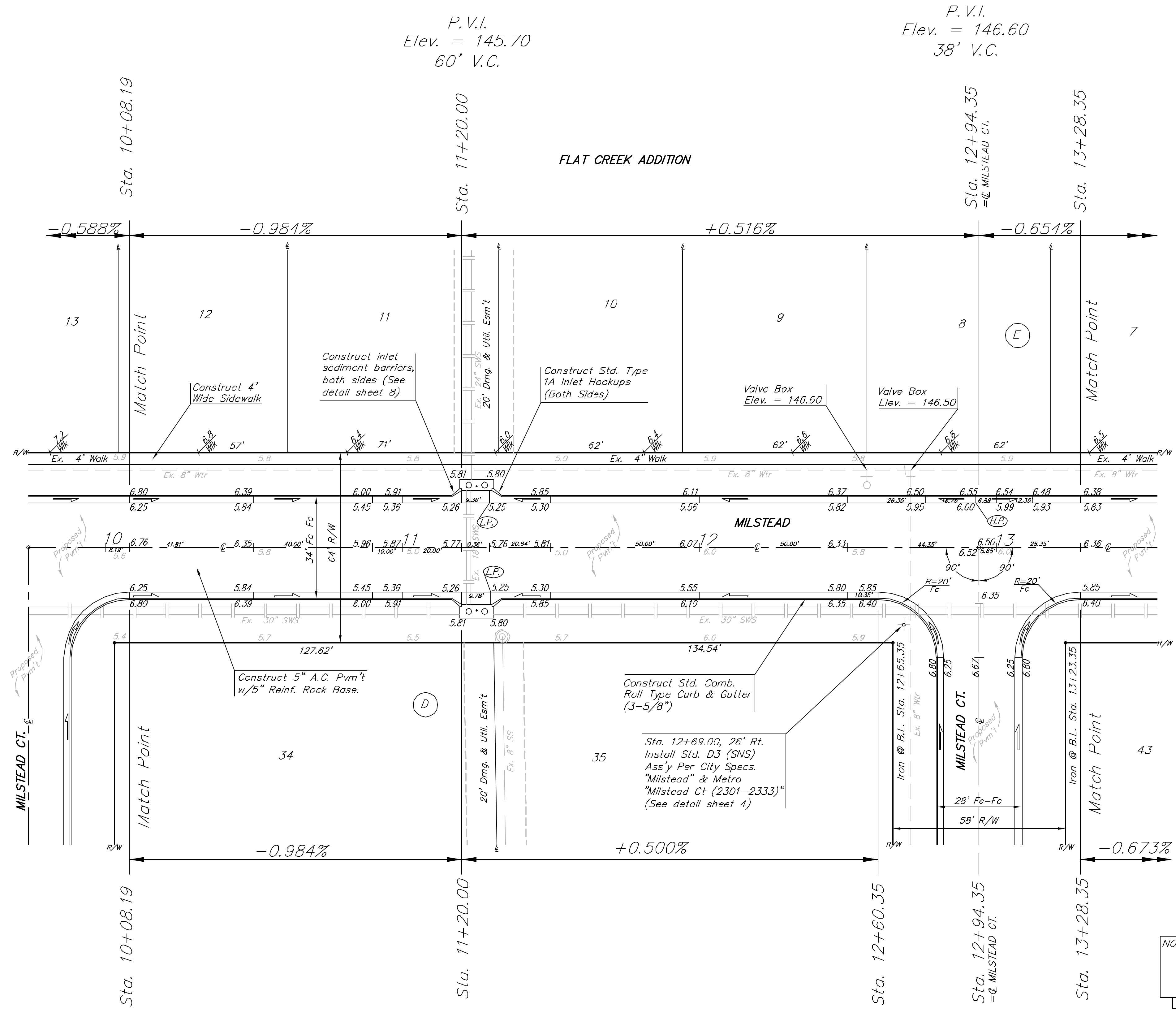


BENCHMARKS:
 BM #1: "□" Cut in top of curb, east return of SE corner of Lotus & Parkridge.
 Elev. = 145.99 (City Datum)
 BM #2: C.O.W. Disc Adjacent to Fire Hydrant in S.E. Curb Return of Grant & Milstead.
 Elev. = 146.09 (City Datum)
 BM #3: "X" Cut in Top of Curb at South End of Golden Hills Ct. Cul-de-Sac.
 Elev. = 147.73 (City Datum)

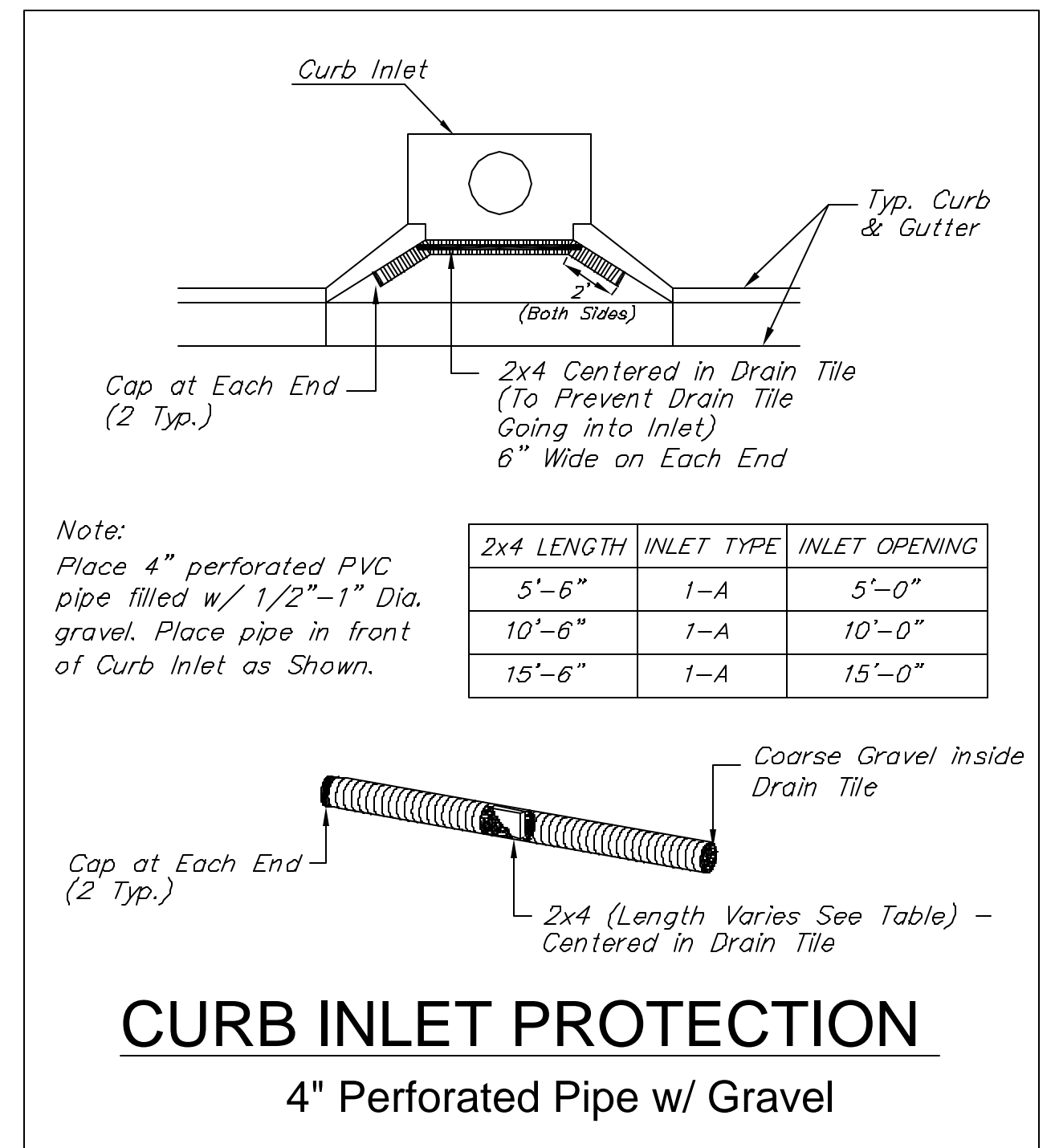
Scale
 1" = 20' Horizontal
 1" = 5' Vertical
 ● = Iron



P.V.I.
 Elev. = 145.70
 60' V.C.

P.V.I.
 Elev. = 146.60
 38' V.C.

P.V.I.
 Elev. = 145.70
 60' V.C.



NOTE: ROLL TYPE CURB & GUTTER TO BE CONSTRUCTED ON THE PAVEMENT SHOWN ON THIS SHEET. TOP OF CURB ELEVATIONS ARE GIVEN FOR FULL HEIGHT CURB.

FLAT CREEK ADDITION - PHASE III
MILSTEAD
 STA 10+08.19 TO STA 13+28.35

BAUGHMAN COMPANY P.A.
 ENGINEERING, SURVEYING, & PLANNING
 316-262-7271 • 315 ELLIS • WICHITA, KANSAS 67211

PROJECT NUMBER
472-83385

DESIGN NBW DRAWN KDP/CNX APPROVED DATE 10/03 SCALE NOTED SHEET OF **8** OF **44**