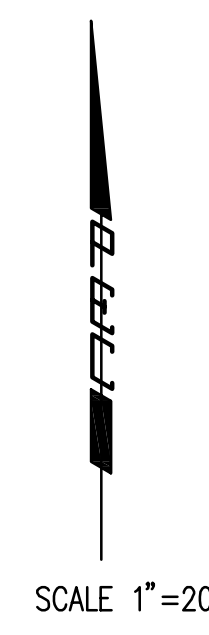
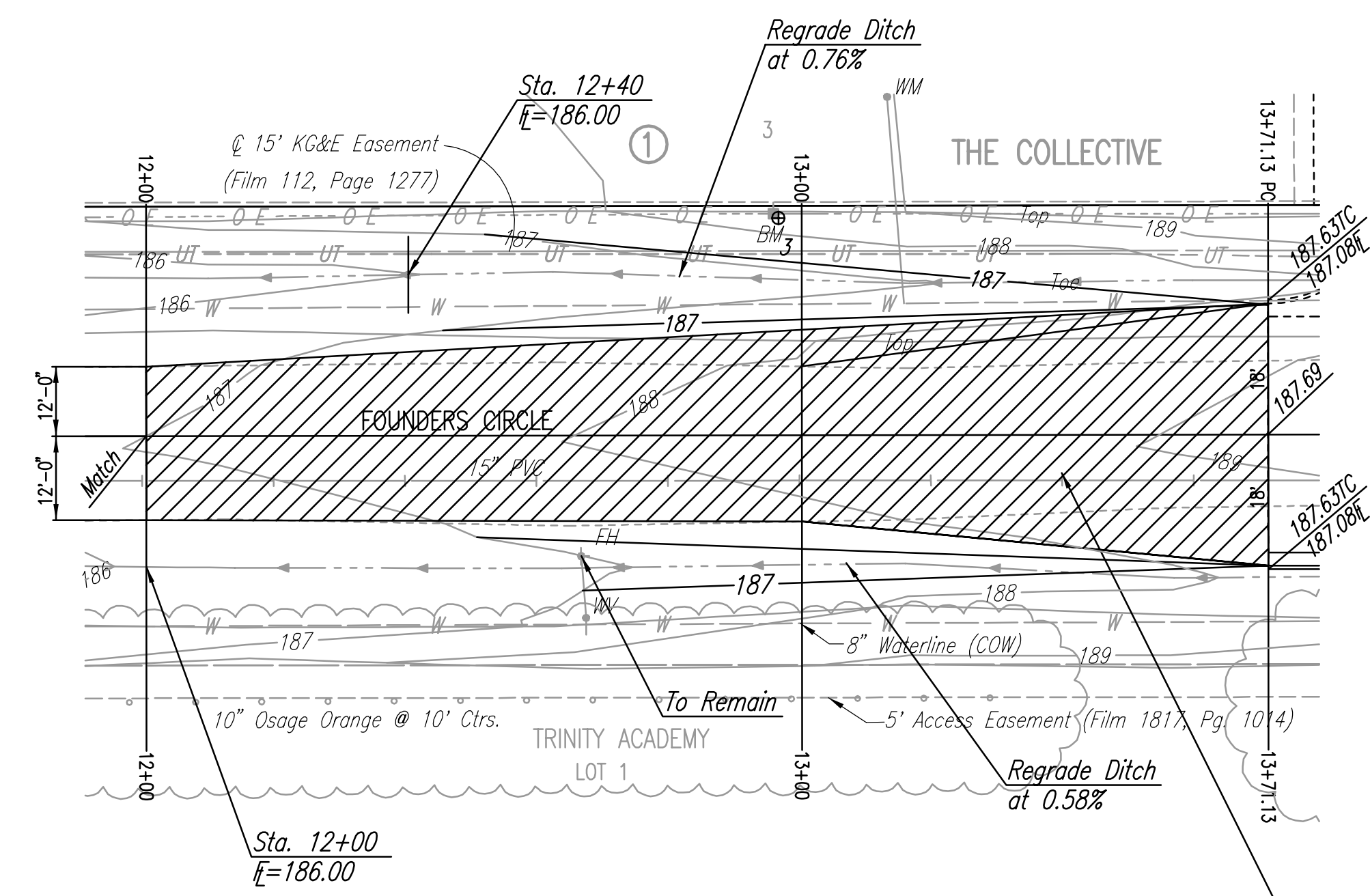


\*\*CONTRACTOR SHALL EXCAVATE TO LOCATE THE END OF THE EXISTING 8" PIPE. CONTRACTOR SHALL VERIFY LOCATION, SIZE, PIPE TYPE AND FLOWLINE ELEVATION. THIS INFORMATION SHALL BE REPORTED TO THE ENGINEER SO THAT ANY NECESSARY PLAN MODIFICATIONS CAN BE MADE. ALL COSTS FOR THIS WORK SHALL BE CONSIDERED SUBSIDIARY TO THE 8" PVC PIPE IN PLACE.

**8" CLEANOUT RISER ASSEMBLY DETAIL**

CONTRACTOR SHALL EXTEND EXCAVATABLE FLOWABLE FILL FROM THE END OF EXISTING PIPE TO 2 FEET BEHIND PROPOSED BACK OF CURB. EXCAVATABLE FLOWABLE FILL SHALL BE PLACED FROM 1 FOOT ABOVE PIPE TO ELEVATION 186.00.

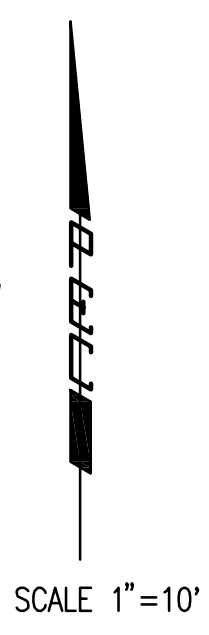
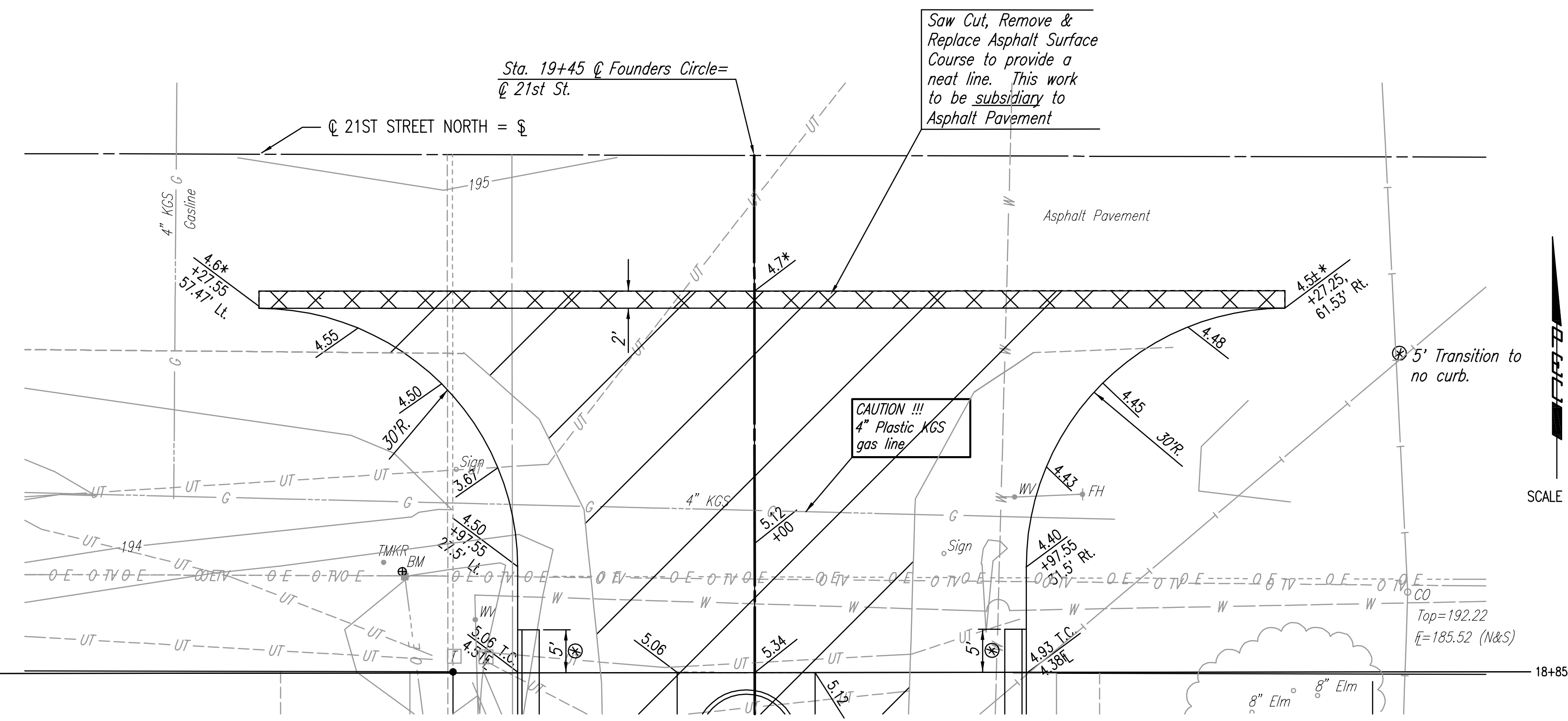


SCALE 1"=20'

BM 3: R.R. Spike in N. face P.P. 120± S. of Ctr. Res. A on W. side of Founders Circle. Elev.=190.17

**NOTE:**  
THE CONTRACTOR SHALL REMOVE AND STOCKPILE EXISTING SURFACING MATERIAL FOR REUSE ON THE TRANSITION. THIS MATERIAL SHALL BE AUGMENTED WITH SA-1 TEMPORARY SURFACING MATERIAL SUCH THAT A 4" MINIMUM THICKNESS IS PROVIDED. GRADING AND TEMPORARY SURFACING FOR THE TRANSITION FROM EXISTING SURFACE TO PROPOSED PAVEMENT SHALL BE PAID FOR SEPARATELY, BUT SHALL BE CONSIDERED INCIDENTAL TO OTHER CONSTRUCTION ITEMS.

Install 4" Light Type Surfacing (SA-1) Cross Slope (1/4"/ft. to 3/8"/ft.)



SCALE 1"=10'

DSNR: BER OPER: SAW SCALE: 1=10.00 F:\SENTOUT\2003\03088\Drawings\06ENTDITL 03-15-2004 02:28:00 pm

No.	Revision	By	Date
CITY OF WICHITA, KANSAS NEIL D. CABLE, P.E. - CITY ENGINEER THE COLLECTIVE <b>FOUNDERS CIRCLE ENTRANCE DETAILS &amp; 8" CLEANOUT RISER ASSEMBLY DETAIL</b> CITY OF WICHITA PROJECT NO. 472-83455 <b>Professional Engineering Consultants, P.A.</b> 303 S. TOPEKA • WICHITA, KANSAS 67202 316-262-2691 • FAX 316-262-3003			
Designed by	BER	Job No.	35-03088-0042
Drawn by	JP, SAW	Date	DECEMBER 2003
			Sht. 6 of 17