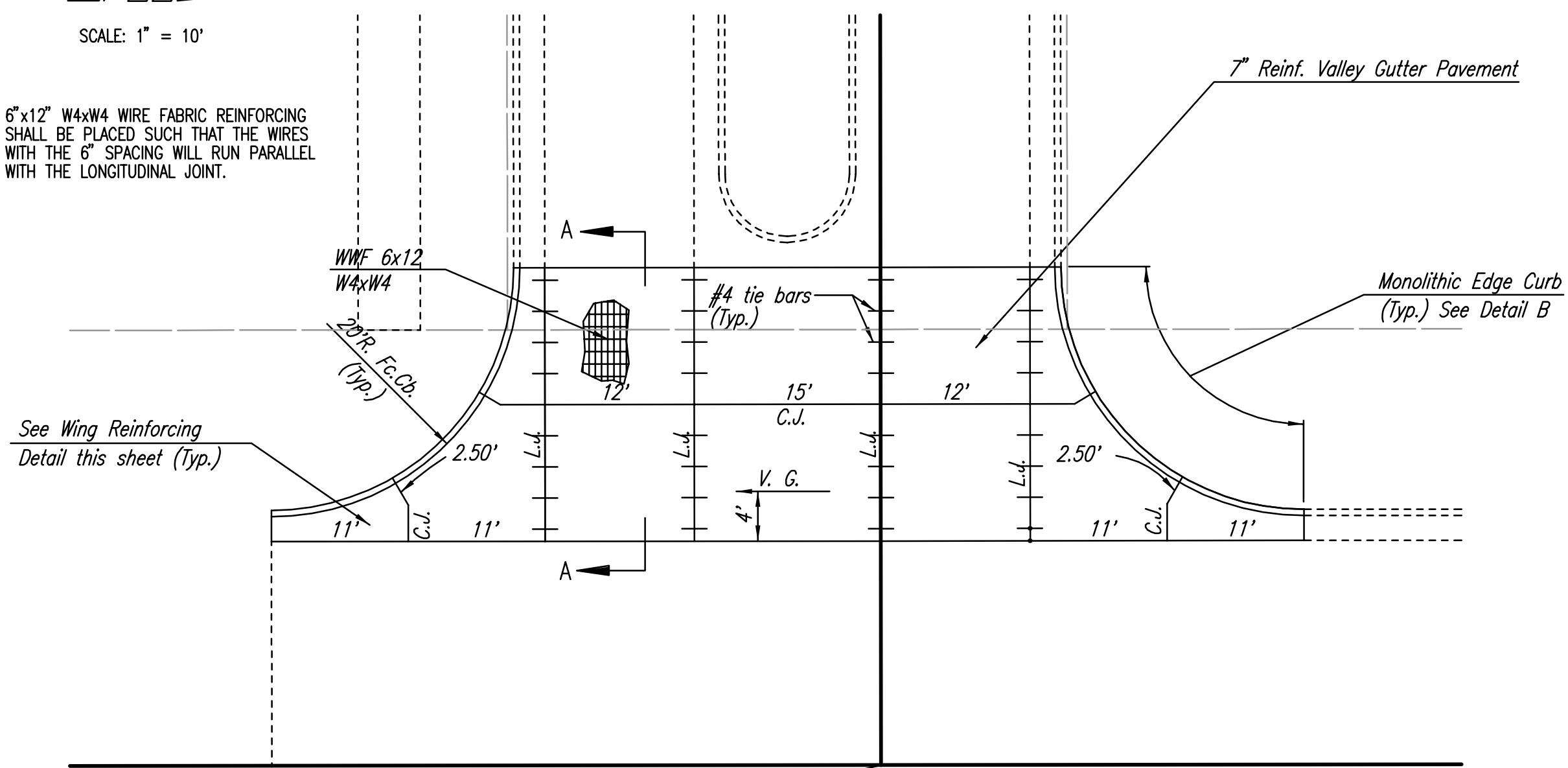


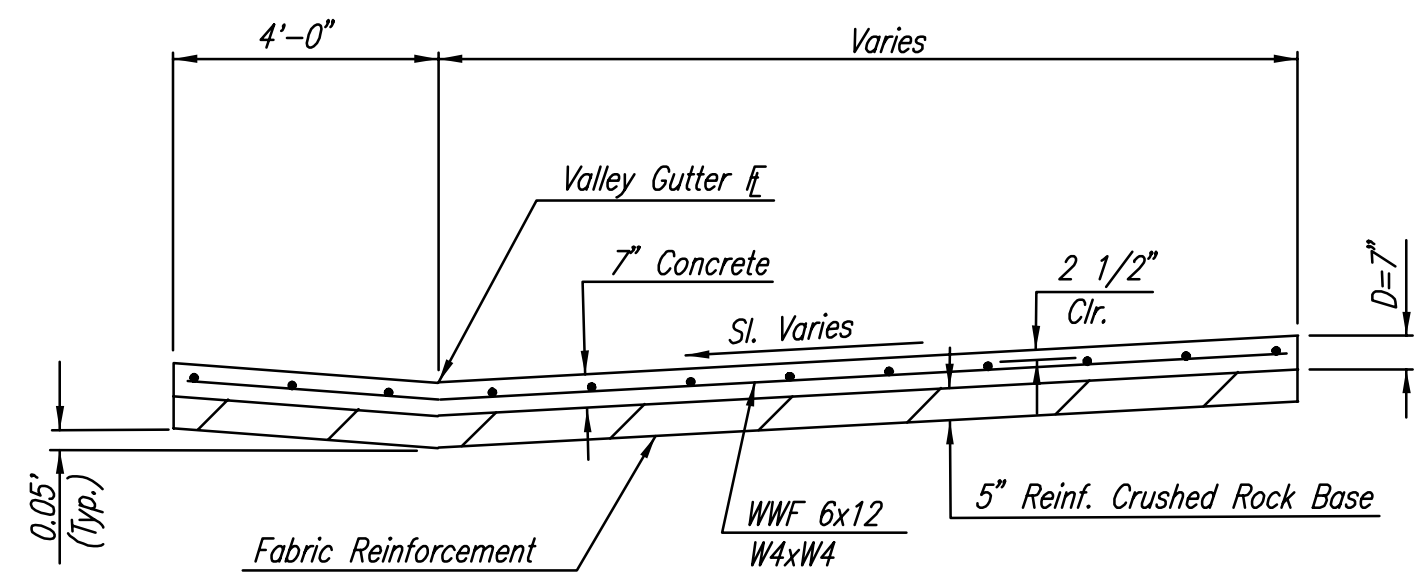
SCALE: 1" = 10'

6" x 12" W4xW4 WIRE FABRIC REINFORCING SHALL BE PLACED SUCH THAT THE WIRES WITH THE 6" SPACING WILL RUN PARALLEL WITH THE LONGITUDINAL JOINT.



Sta. 14+20.13 @ Founders Circle=
Sta. 21+76.58 @ Collective Lane

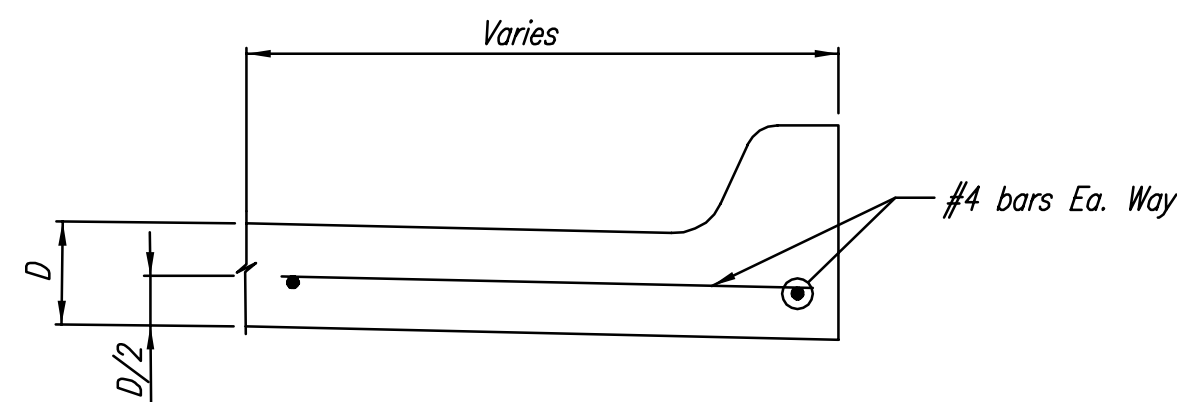
REINFORCED VALLEY GUTTER



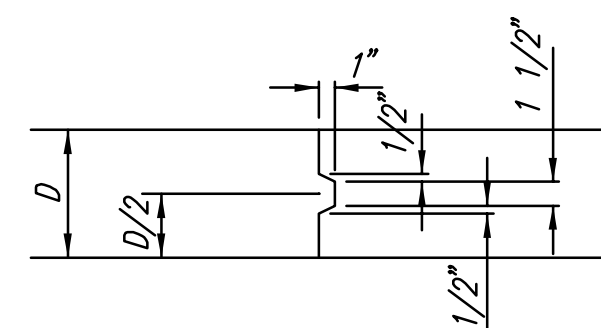
SECTION A-A

NOTE: OMIT REINFORCING MESH AT ALL JOINTS

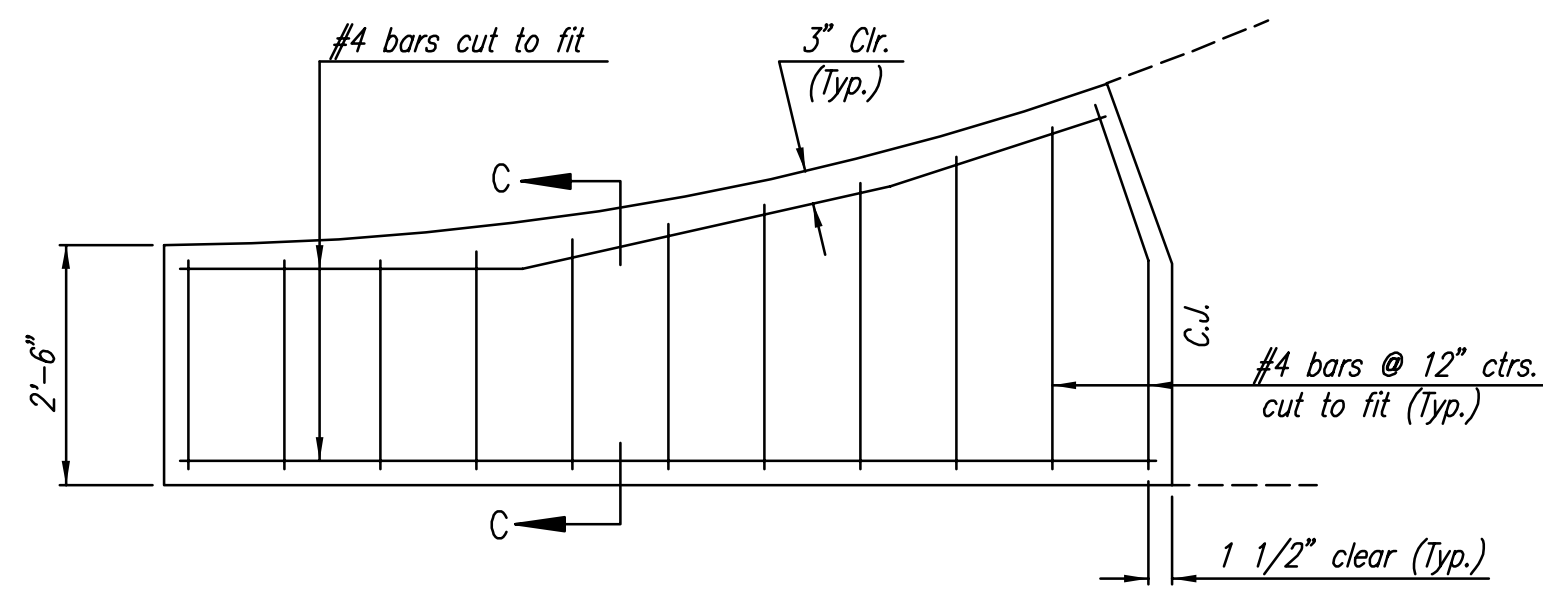
NOTE: ALL CONCRETE VALLEY GUTTER REINFORCEMENT SHALL BE ADEQUATELY SUPPORTED BY BAR CHAIRS IN THE REQUIRED POSITION UNLESS APPROVED OTHERWISE BY THE ENGINEER.



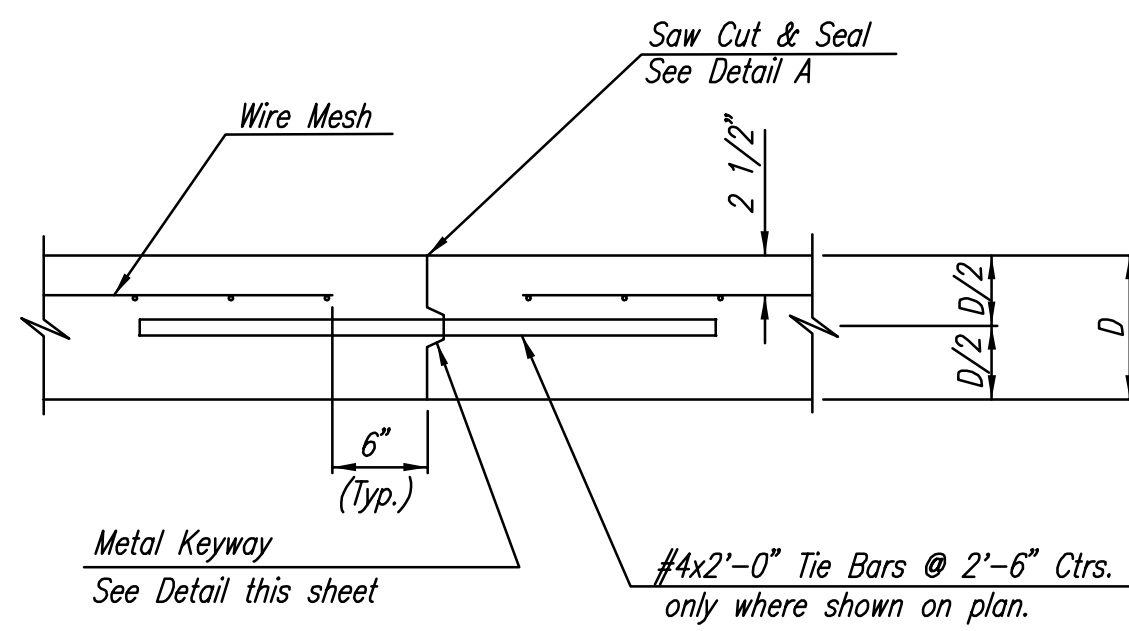
SECTION C-C



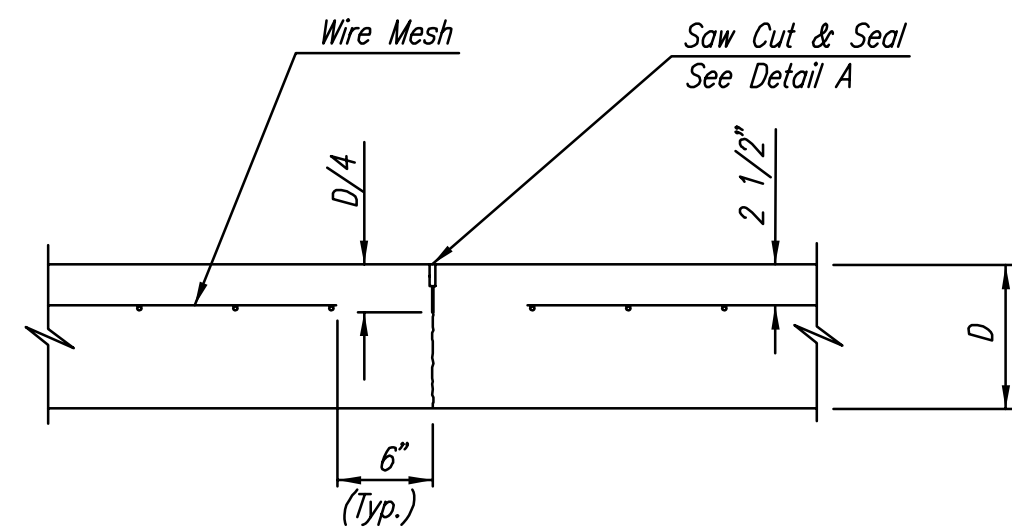
KEYWAY DETAIL



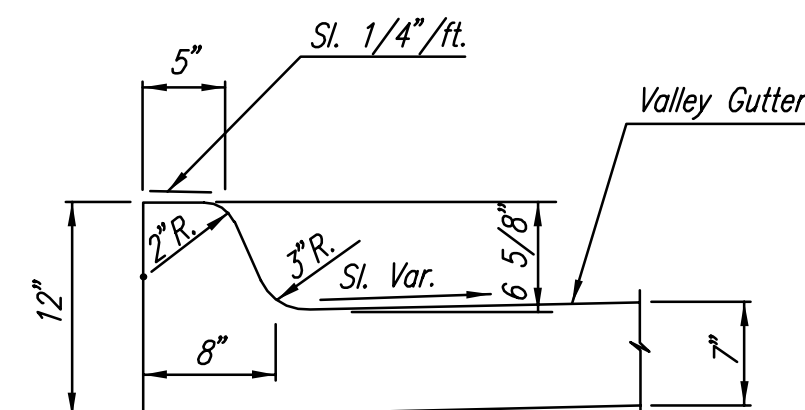
WING REINFORCING DETAIL
NOTE: OMIT WIRE FABRIC REINFORCING IN THIS SECTION.



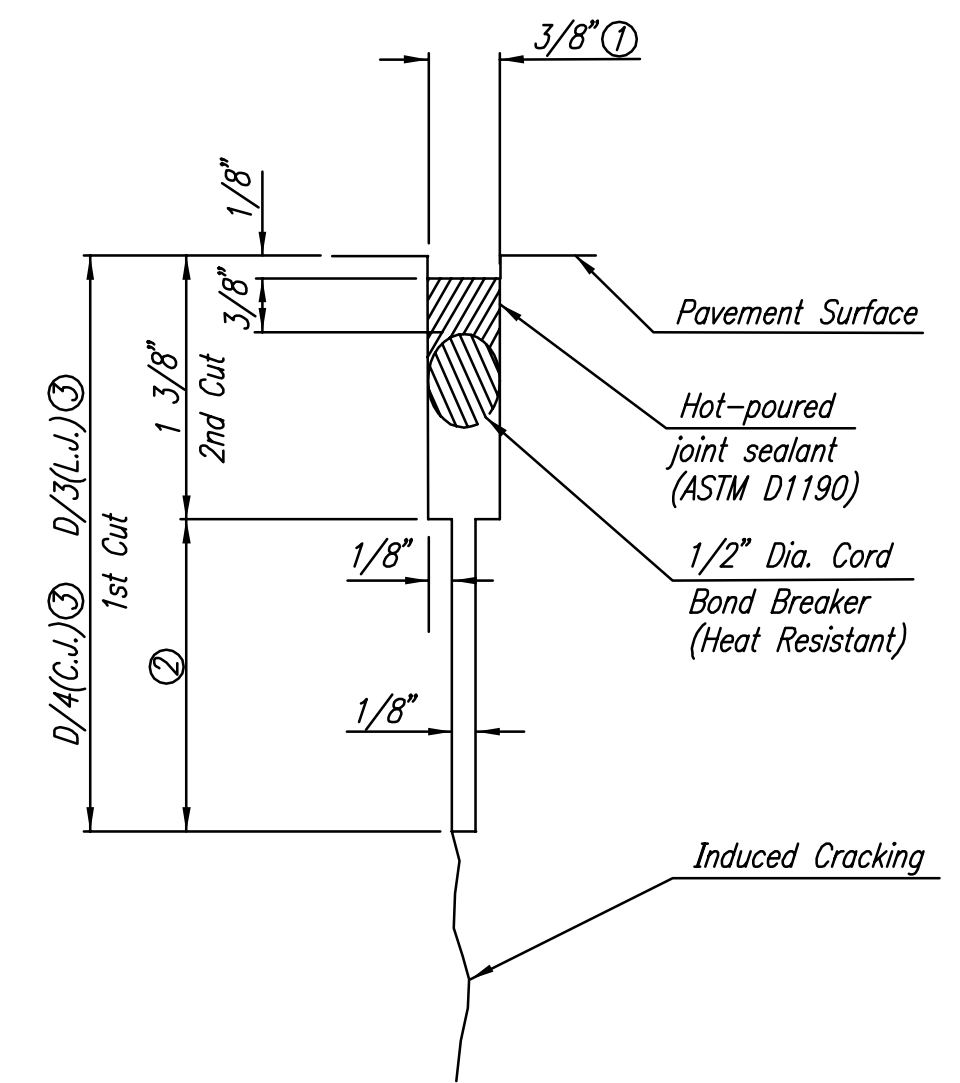
LONGITUDINAL CONSTRUCTION JOINT DETAIL
REINFORCED PAVEMENT
(TRANSVERSE SECTION)
(ALTERNATE L.J.)



CONTRACTION JOINT DETAIL
REINFORCED PAVEMENT
(C.J.)

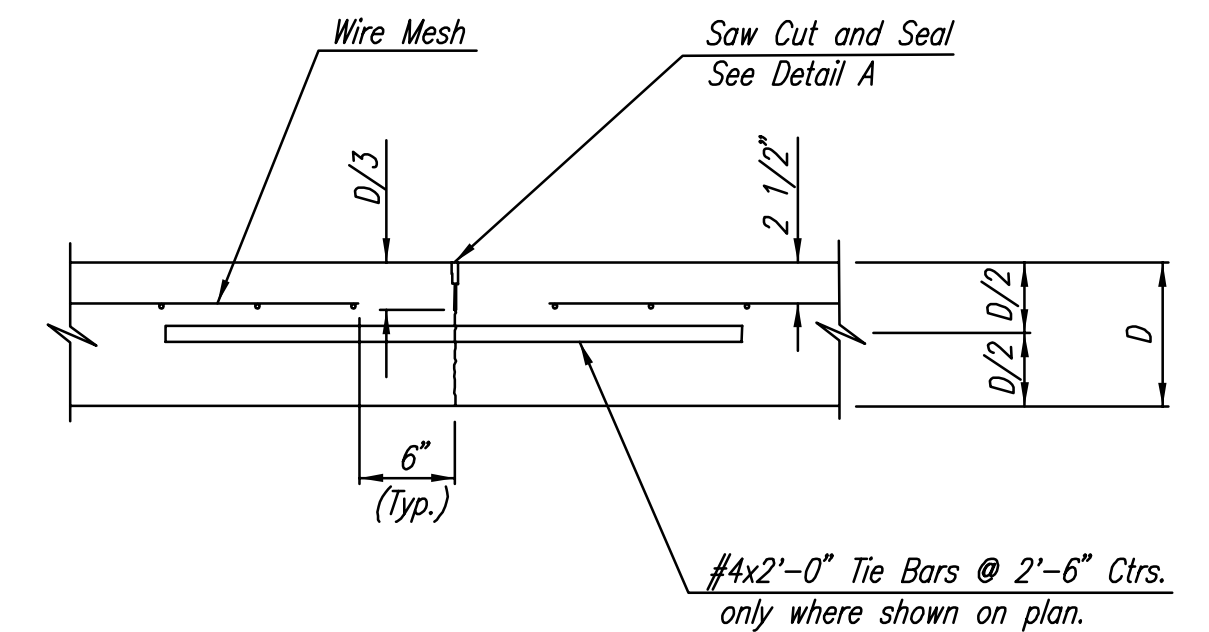


DETAIL B



DETAIL A

- ① To be accomplished in 2 cuts for Longitudinal Joints and Contraction Joints. Initial cut to be 1/8" wide.
- ② Eliminate bottom of cut when metal keyway is used as part of Longitudinal or Transverse Construction Joint and at Doweled Construction Joint Locations.
- ③ 1 1/2" Minimum



LONGITUDINAL JOINT DETAIL
REINFORCED PAVEMENT
(TRANSVERSE SECTION)
(L.J.)

DSNR: BER OPER: SAW SCALE: 1=10.00 F:\SENTOUT\2003\03088\Sheet\DWG\07VALGUTDL 03-15-2004 02:29:06 pm

No.	Revision	By	Date
CITY OF WICHITA, KANSAS NEIL D. CABLE, P.E. - CITY ENGINEER THE COLLECTIVE VALLEY GUTTER DETAILS CITY OF WICHITA PROJECT NO. 472-83455 Professional Engineering Consultants, P.A. 303 S. TOPEKA • WICHITA, KANSAS 67202 316-262-2691 • FAX 316-262-3003			
Designed by	BER	Job No.	35-03088-0042
Drawn by	JP, SAW	Date	DECEMBER 2003
			Sht. 7 of 17