

# AS BUILT PLANS

Contractor: Forshee Plumbing  
 Inspector: Don Eddingfield, Baughman Co.  
 pdf's by KEK, 8/16/13

## FIRE HYDRANT TO SERVE A Portion of Lot 4, Block A One Kellogg Place 2nd Addition Private Project: 1755 PPW (607853) CITY OF WICHITA, KANSAS

Gary Janzen, P.E. City Engineer  
 JULY 2013

Clow Hydrant

### BENCHMARK

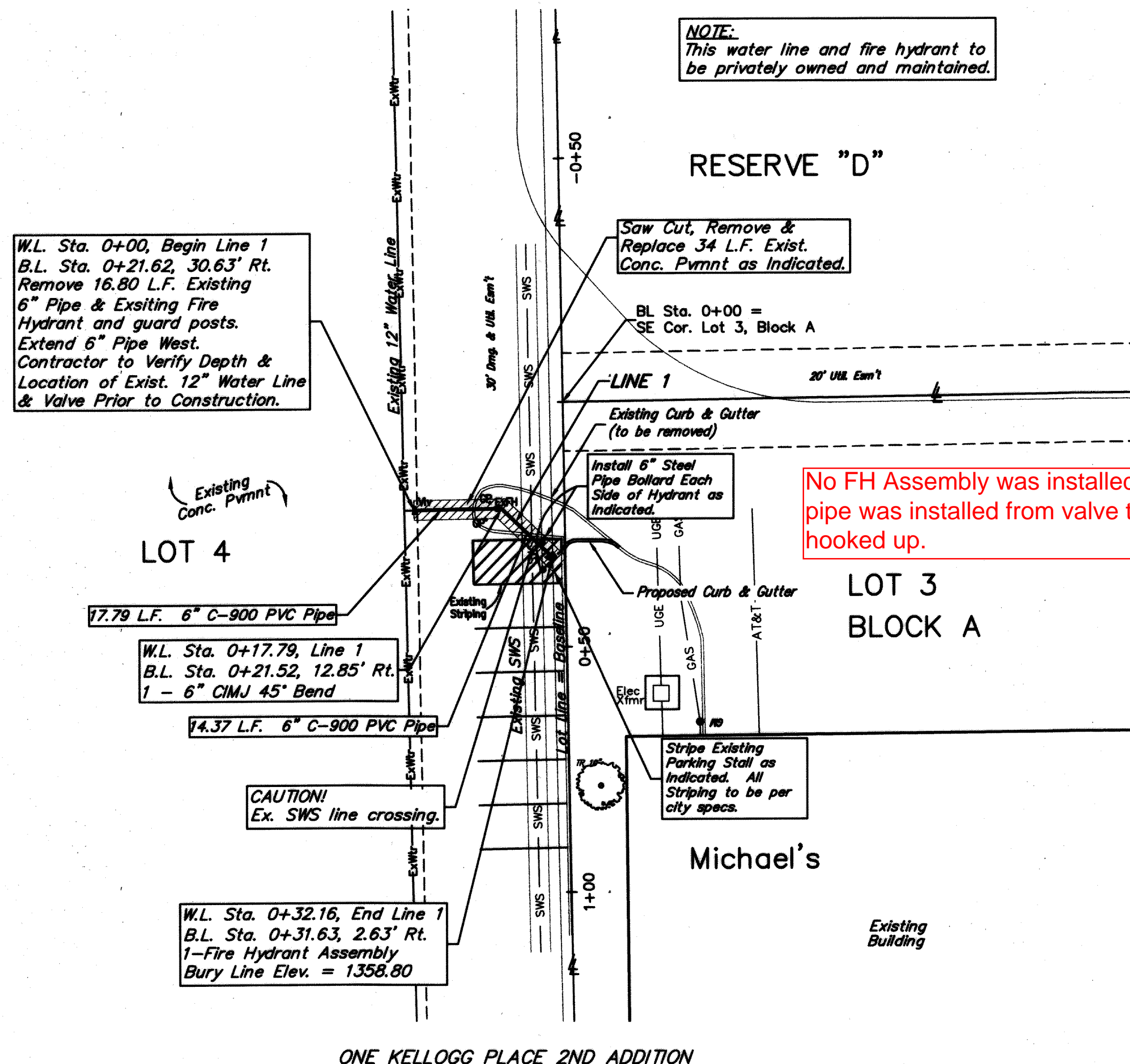
City of Wichita Benchmark - SE Corner of Intersection of Greenwich and Kellogg. NW Corner of Light Pole Base 48.60' NNW of C of SS Manhole 48.70' S of C of Traffic Signal Manhole in Kellogg Median 70.50' E of Back of E Curb on E Side of Median in Greenwich Road Elev. = 164.78 City Datum (1352.18 NGVD)

### SHEET INDEX:

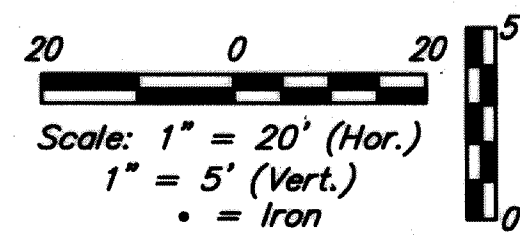
|                            |   |
|----------------------------|---|
| Title Sheet - Plan/Profile | 1 |
| Standard Water Details     | 2 |

### GENERAL NOTES

- Contractor will be required to provide notice to utility companies a minimum of forty-eight (48) hours prior to any excavation, as follows:  
 Kansas One-Call 687-2470  
 The Contractor must notify the following in case of an emergency:  
 Cox Communications 262-4270  
 Kansas Gas Service 1-888-482-4950  
 Westar Energy 383-8650  
 Black Hills Energy (Gas) 1-800-303-0357  
 ATT 268-2245  
 City of Wichita Water Dept. 268-4563  
 City of Wichita Sewer Maint. 268-4024  
 City of Wichita Storm Sewer Maint. 268-4090  
 City of Wichita Traffic Maint. 268-4034
- Utility service lines, poles, valve boxes, meters, and etcetera are to be adjusted as necessary by others prior to construction unless the plans specifically call for their adjustment by the Contractor or unless the plans specifically identify a utility to be adjusted by its owner during construction. Existing utilities and their location, as shown on the plans, represent the best information obtainable for design. The Contractor will be required to work around existing utilities within the right-of-way which do not conflict with proposed construction.
- Rubble from the removal of miscellaneous structures and excess excavation which is to be wasted shall be disposed of on sites to be provided by the Contractor. These sites shall be approved by the Engineer as to suitability, appearance and site location. Locations, in the opinion of the Engineer, that will leave an unsightly appearance will not be approved. All disposal sites must be approved by the Kansas Department of Health and Environment. Material either stockpiled or disposed of in a flood plain would require a Kansas State Board of Agriculture permit. Any material dumped in waters of the United States or wetlands is subject to U.S. Corps. of Engineers permitting regulations. Any material buried or stockpiled beyond approved construction limits would require additional archaeological investigations unless buried in a previously approved borrow location.
- Contractor shall furnish the inspector with a copy of the manufacturer's certification for any pipe used on this project after completion of pipe installation. The engineer will not certify the project to the city until pipe certification has been received.
- Trees and shrubs in public right-of-way which are in direct conflict with proposed new construction shall be removed by the Contractor with the Engineer's approval. Trees and shrubs which are not in direct conflict with proposed new construction shall be saved and protected from damage.
- All water lines and appurtenances shall be installed in accordance with the most recent edition of City of Wichita, Kansas Standard Specifications for the Construction of City Projects.
- Contractor shall not start work on the project until the project inspector is assigned to the project and is present on the site. Contractor shall not start on the project until all necessary bonds and permits have been obtained. Bonds may include but are not limited to Statutory, Performance & Maintenance. Any work done without inspection will be required to be uncovered for inspection.
- The Baseline for this project is the East Line of Lot 3, Block A, One Kellogg Place 2nd Addition with the SE Corner of said lot - Station 0+00

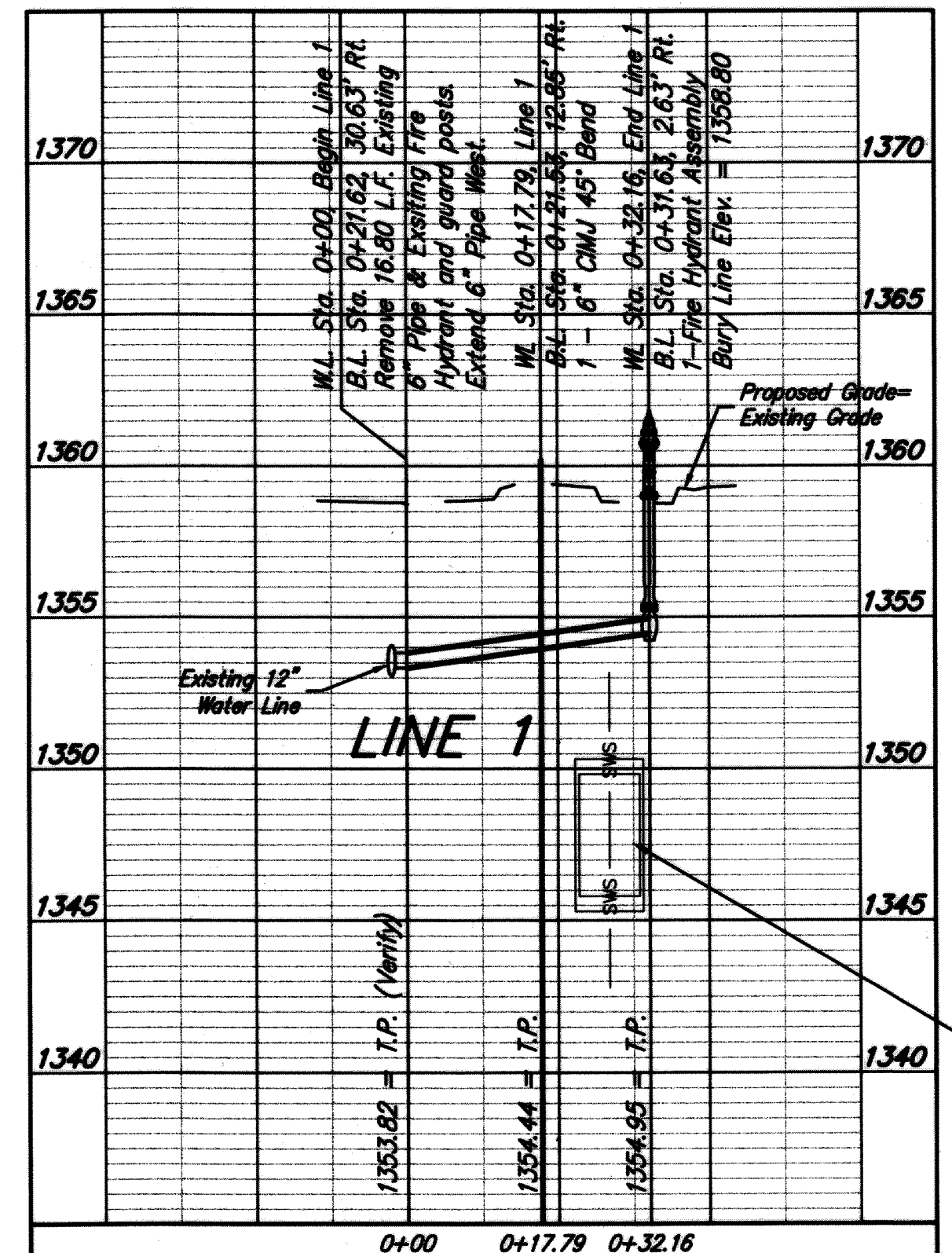


No FH Assembly was installed. FH was relocated and PVC pipe was installed from valve to FH. Test station not hooked up.



LEGEND

|                      |      |
|----------------------|------|
| Underground Electric | UGE  |
| AT&T                 | AT&T |
| Existing Gas Line    | GAS  |



CAUTION!  
 Ex. SWS line crossing.

APPROVED AS NOTED  
 BY CITY ENGINEER OF WICHITA,  
 BY WICHITA WATER & SEWER DEPARTMENT,  
 & BY WICHITA FIRE DEPARTMENT

Public Works *Shirley Dandson* 07/16/13  
 Water & Sewer *Don Eddingfield* 7-23-13  
 Fire *Don Eddingfield* 7-23-2013

NOTE TO CONTRACTORS  
 Private Property:  
 Installation and testing for the fire protection line is to be performed by a City of Wichita licensed fire protection contractor in accordance with the fire codes as adopted by the City of Wichita. All material and construction practices for the fire protection line shall comply with the fire codes as adopted by the City of Wichita (available from the City of Wichita Fire Department). The Contractor shall not commence work without notification and approval of the Wichita Fire Department. Inspection of the fire protection line is to be provided by a licensed Engineering Firm under contract with the Owner/Developer and the Fire Department. The contractor shall not start work until the project inspector is assigned to the project and present on the site. Any work done without inspection will be required to be uncovered for inspection.

