

GENERAL NOTES:

1. Contractor will be required to provide notice to utility companies a minimum of twenty-four (24) hours prior to any excavation, as follows:

- Kansas One-Call (316)687-2470  
 The Contractor must notify the following in case of an emergency:  
 Cox Communications (316)262-4270 or (316)263-2061  
 Westar Energy// (800)482-4950  
 Kansas Gas & Electric Company AT&T 1-555-1212  
 City of Wichita Water Department (316)268-4908  
 City of Wichita Sewer Department (316)268-4071  
 Aquila Natural Gas (316)941-1608 or (800)303-0357

SIGMA FITTINGS  
 KENNEDY (STORZ)  
 NORTH  
 AMERICAN C-900

From NW corner of building North 148' & 16' West to valve  
 2' West of valve to tapping sleeve  
 From NW corner of building North 148' & East 129' to tee valve is 2' North of tee & fire hydrant is 2' North of valve

2. Exist. utilities and their locations, as shown on the plans, represent the best information attainable for design. Location information has been obtained from the various utility companies and is either from company record drawings or company-provided field locations. The Contractor will be required to work around existing utilities which do not conflict with proposed constructions.

3. The Contractor to verify utility locations prior to construction of this project.

4. Utility service and installation shall be coordinated with the respective utility owner. Contacts are:

- Kansas Gas Service Tim Hamlin (316)832-3121  
 Westar Energy Shane Price (316)261-6315  
 Black Hills Energy Daryl Keller (316)941-1654  
 Wichita Water & Sewer Greg Lolley (316)268-4334  
 AT&T Jason Edwards (316)268-2008  
 Cox Communications Mark Henderson (316)260-7745

5. All lawn/turf areas disturbed by construction of proposed improvements shall be restored with the same grass as existing. Restoration of disturbed areas shall include, but not limited to, to soil preparation, fertilizing, seeding, mulching (all seeded areas, outside the limits of erosion mat placement), and/or reseeding, and installation of erosion control mat. All seeding work shall be in accordance with the City of Wichita Standard Specifications and the City of Wichita Administrative Regulations No. AR 6.5 which governs cleanup and respiration or replacement following construction. All cost for the soil preparation, seeding and mulching (all seeded areas, outside the limits of erosion mat placement) shall be paid for through the lump sum bid item for "Seeding." All seeded areas within eight feet of the back of new curb shall be covered with an approved erosion mat, which shall be paid for by the measured quantity bid item "Back of Curb Protection (8' wide)."

6. Traffic affected by the construction of this project shall be handled in accordance with the latest edition of the Manual on Uniform Traffic Control Devices.

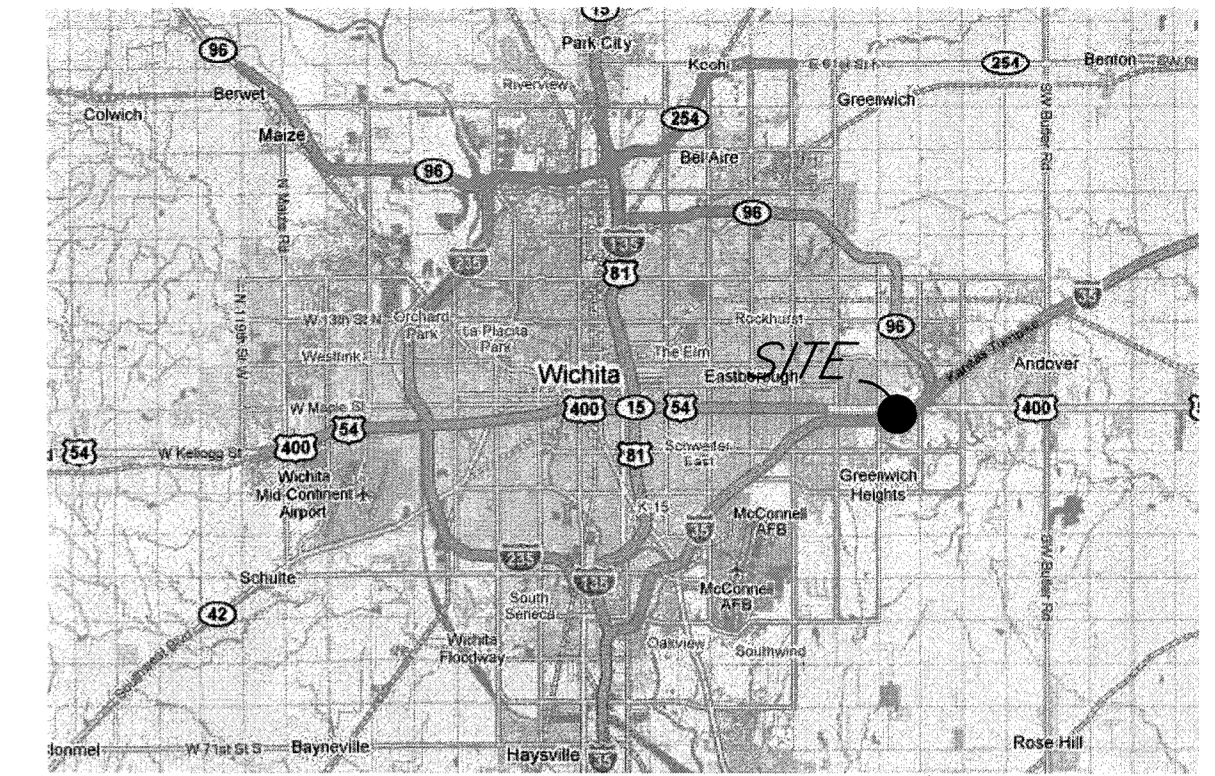
7. It is the contractor's responsibility to visit this site to better understand the extent of site clearing and restoration to be performed. Site Clearing and Restoration shall include all costs for removal of items which a pay item is not provided.

8. The contractor shall be responsible for preserving property irons. The contractor will be required to re-establish any property irons which are damaged or destroyed by the construction operations. Such irons shall be re-established by a licensed land surveyor in accordance with state laws.

9. Properties within the project limits may have underground sprinkler systems in public right-of-way which conflict with new construction. Contractor will be required to remove such improvements should they not be removed by their owner at the time of construction of the project. The contractor will be required to salvage all sprinkler heads and/or valves and give such material to owner. Portions of underground sprinkler systems not in conflict with new construction shall be protected from damage and shall remain in place. All work in connection with underground sprinkler systems shall be considered as subsidiary to the contract pay items for work.

10. Cuts made in paved surfaces on public property will be repaired by the City's Contractor and charged against the contractor. Unit Repair prices are available from the city at 268-4418. A surcharge may be applicable. Call 268-4418 for details. Repair costs to be paid prior to release of utility service if utilities are effected.

# WATERLINE TO SERVE ABSOLUTE NATURAL STONE ADDITION 12225 E. Kellogg Drive 1840 PPW (607853) CITY OF WICHITA, KANSAS Gary Janzen, P.E., City Engineer



LOCATION MAP  
 (For Visual Use Only)

INDEX OF SHEETS:

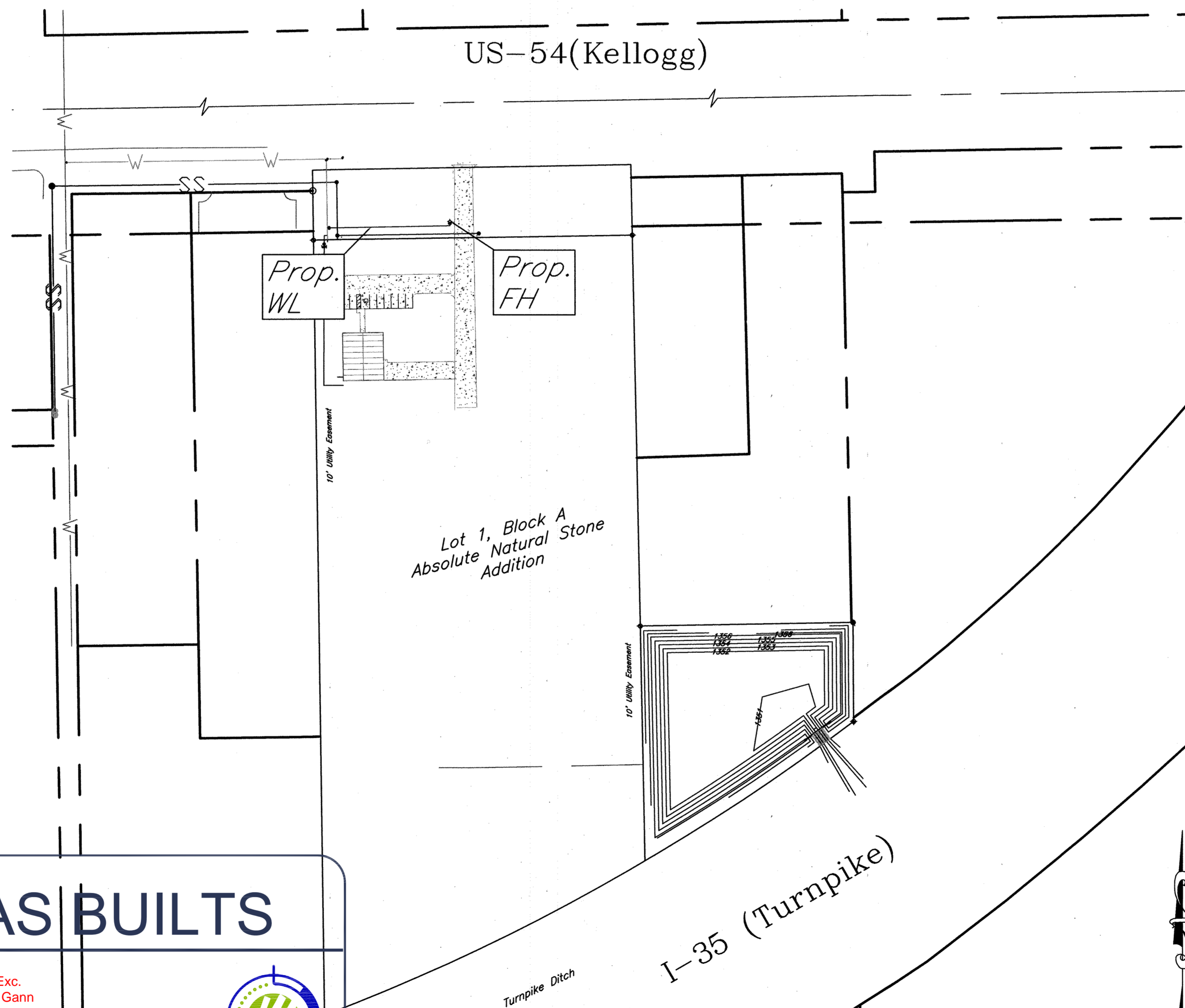
- 1.0 Cover Sheet
- 2.0 Plan and Profile
- 3.0 Standard Water Detail Sheet
- 4.0 Misc. Water Detail Sheet

BENEFIT DISTRICTS:

Benefit Area

BENCHMARK:

COW Benchmark in center median of Zelta and Kellogg,  
 75 ft west of 1/4 section corner,  
 6 ft north of 1/4 section corner,  
 11.5 ft south of south edge of west bound asphalt pavement,  
 and 57.2 ft southwest of fire hydrant.  
 Elev. = 1362.64 NAVD88

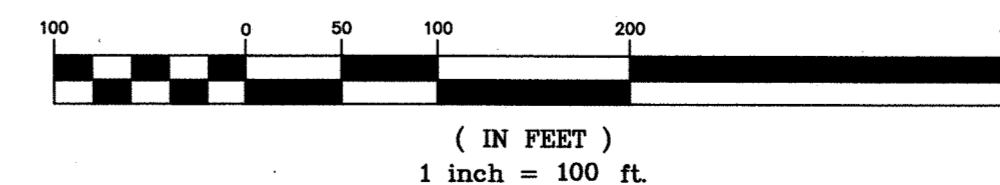


**AS BUILT**

Contractor: B2-Exc.  
 Inspector: Larry Gann  
 Date: 11/06/2014

**KEMILLER ENGINEERING PA**  
 117 E. Lewis,  
 Wichita, KS 67202 (316)264-0242

July 2014



DATE: 08-04-2014  
 THIS SHEET HAS BEEN  
 SIGNED, SEALED AND  
 DATED ELECTRONICALLY

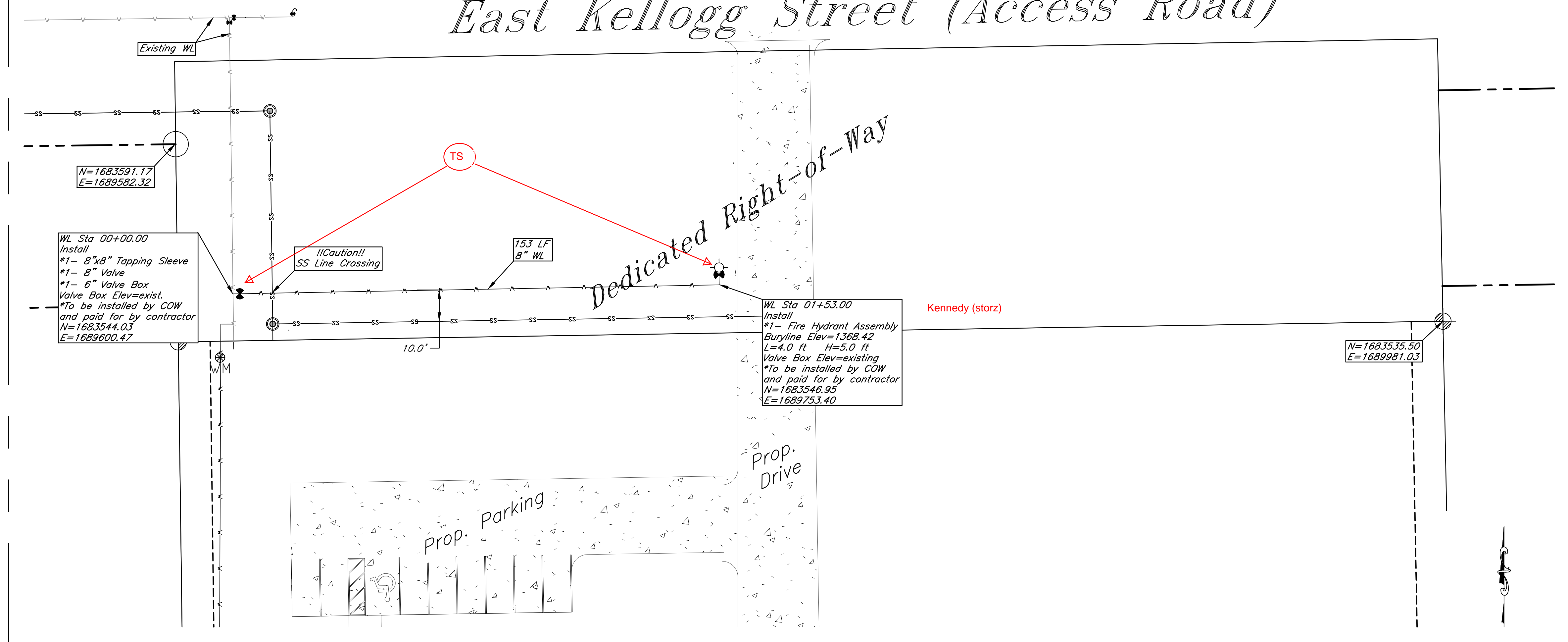
APPROVED AS NOTED  
 BY CITY ENGINEER OF WICHITA,  
 BY WICHITA WATER & SEWER DEPARTMENT,  
 & BY WICHITA FIRE DEPARTMENT

Public Works *Rebecca Divil* 8/6/14  
 Water & Sewer *Gary Janzen* 8-6-14  
 Fire *SWR* 8-6-14

NOTE TO CONTRACTORS  
 Public Property:  
 Inspection and testing for the waterline is to be provided by a Licensed Consulting Engineering Firm under contract with the Owner/Developer. Said inspection to be in accordance with the City of Wichita standard construction engineering practices and certified by a Professional Engineer Licensed in the state of Kansas. No work shall be performed in dedicated easements or public right-of-way by the Contractor without such inspection nor shall any work be commenced without written authorization by the City Engineer. All Construction and Materials shall comply with the City or Wichita Specifications and Standards (on file and available in the City Engineer's Office).  
 Private Property:  
 Installation and testing for the fire protection line is to be performed by a City of Wichita licensed fire protection contractor in accordance with the fire codes as adopted by the City of Wichita. All material and construction practices for the fire protection line shall comply with the fire codes as adopted by the City of Wichita (available from the City of Wichita Fire Department). The Contractor shall not commence work without notification and approval of the Wichita Fire Department. Inspection of the fire protection line is to be provided by a licensed Engineering Firm under contract with the Owner/Developer and the Fire Department. The contractor shall not start work until the project inspector is assigned to the project and present on the site. Any work done without inspection will be required to be uncovered for inspection.

**KEMILLER ENGINEERING PA**  
 117 E. Lewis, Wichita, KS 67202 (316)264-0242

# East Kellogg Street (Access Road)

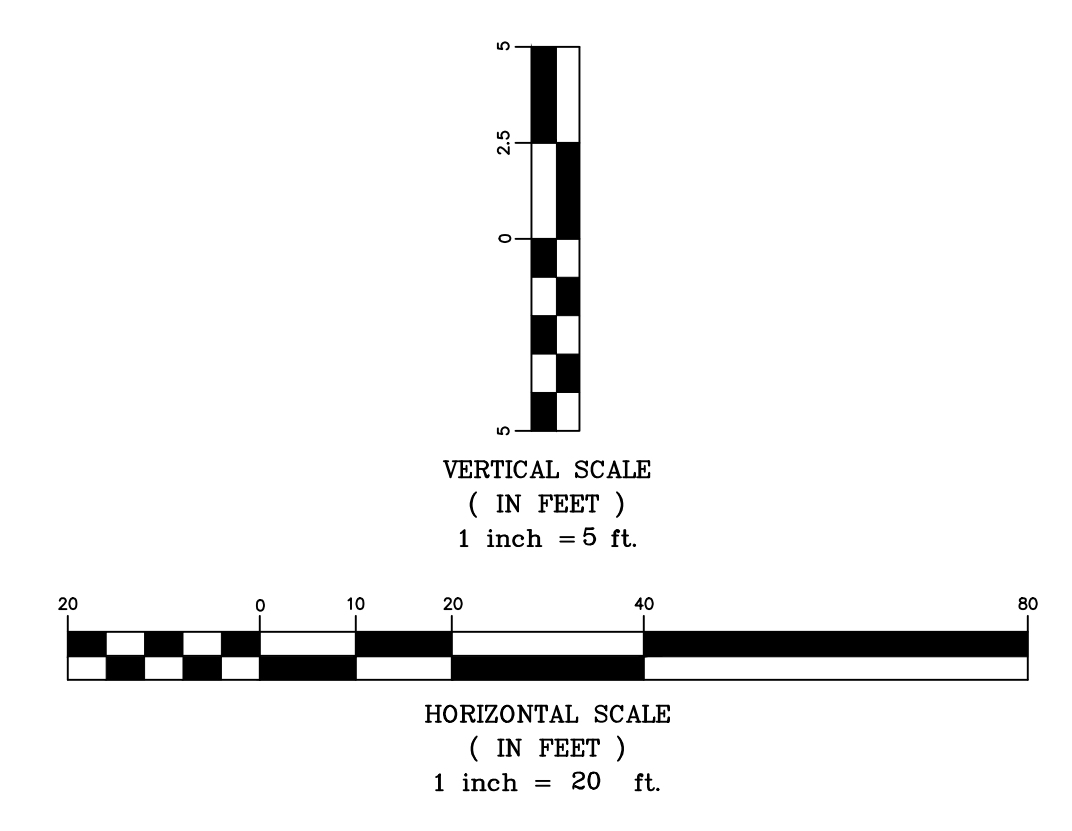
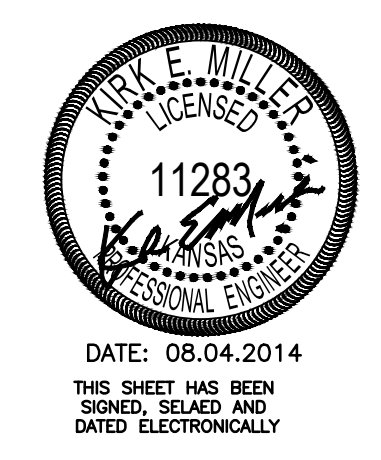
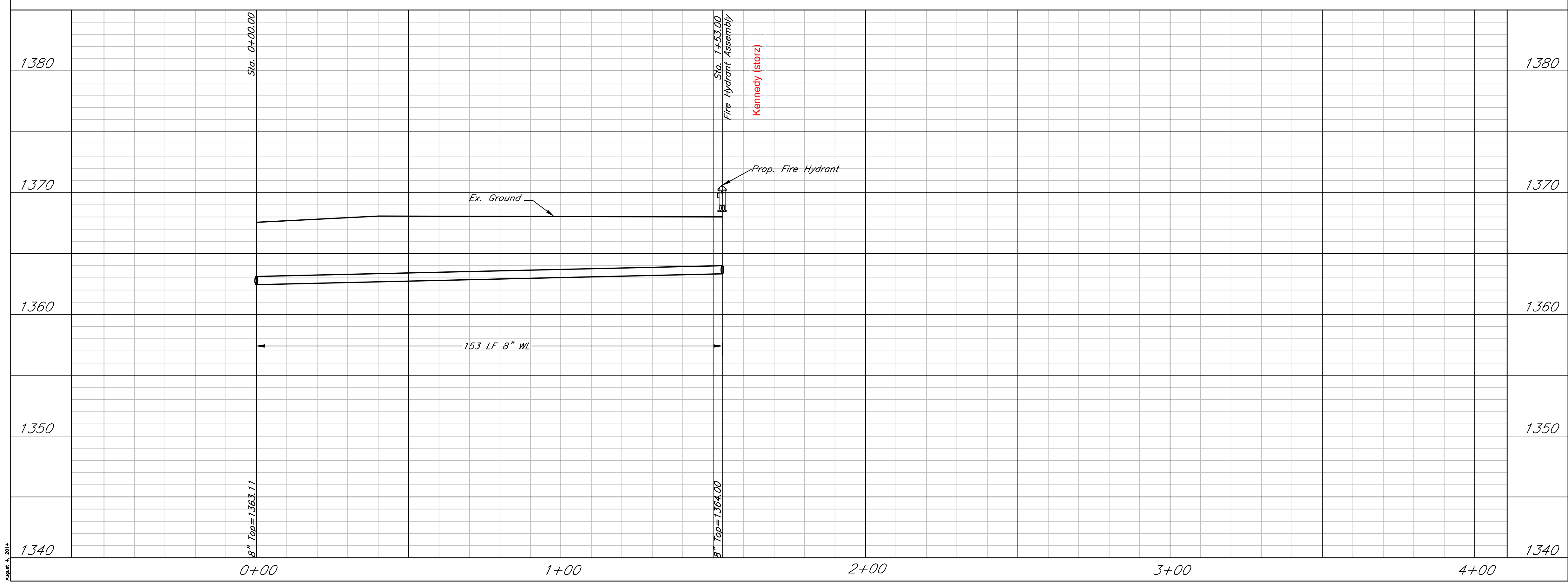


**AS BUILTS**

**KEMILLER**  
ENGINEERING PA

117 E. Lewis,  
Wichita, KS 67202

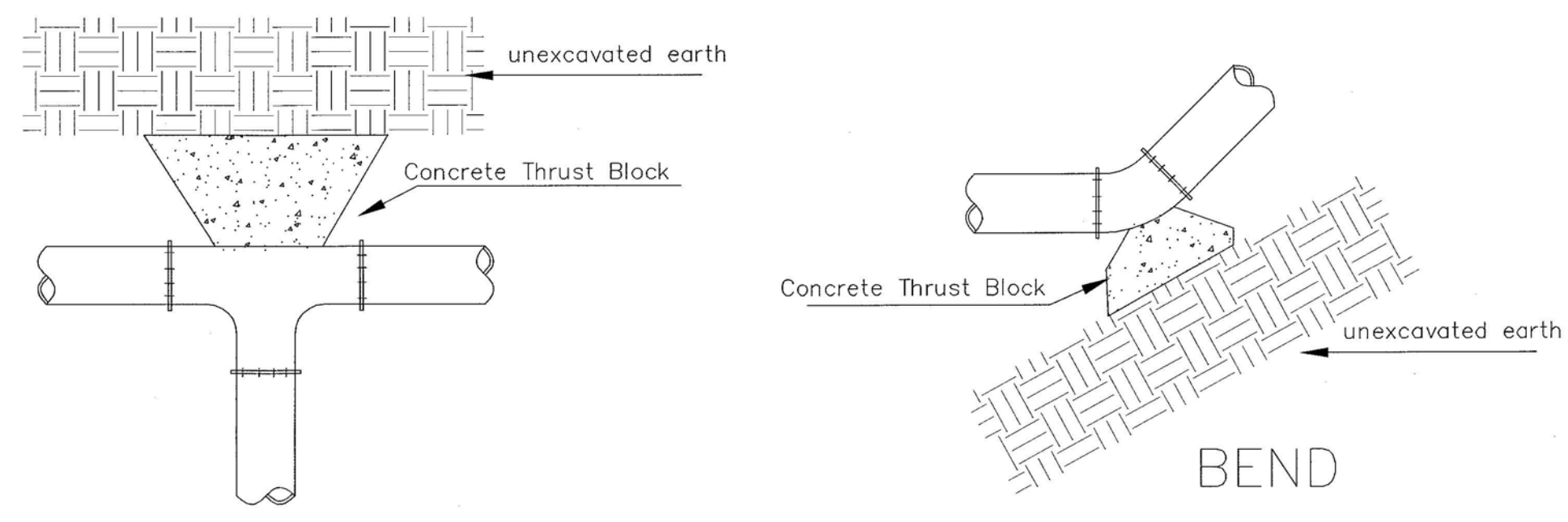
(316)264-0242



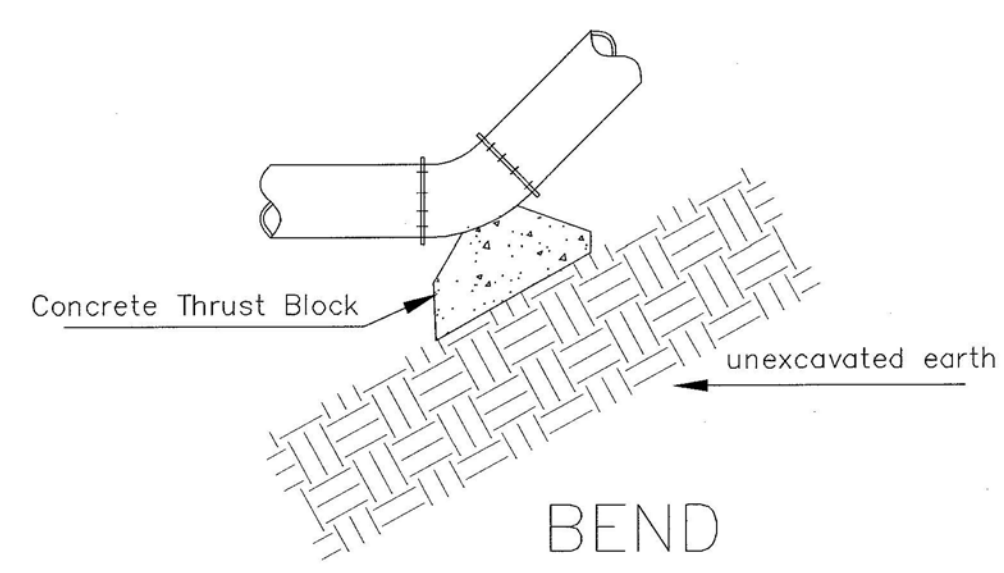
**Absolute Natural Stone  
Plan and Profile - Line 1  
Wichita, Kansas**

<b>KEMILLER</b> ENGINEERING PA 117 E. Lewis, Wichita, KS 67202 (316)264-0242	PROJECT NUMBER			
	KEM NO. 14106	FILE	DATE 7/2014	SHEET 1.0
DESIGN KM	DRAWN DM	REVISED		

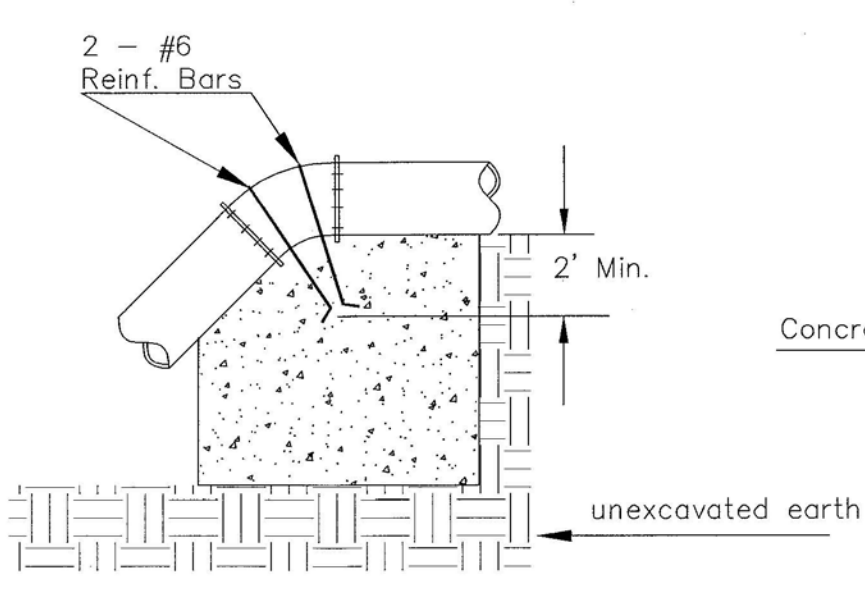




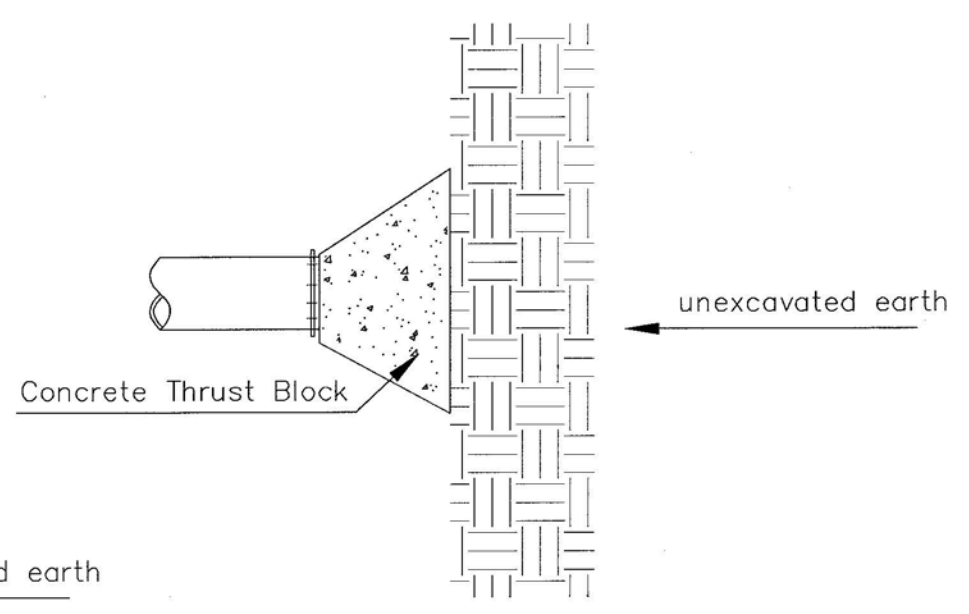
TEE



BEND



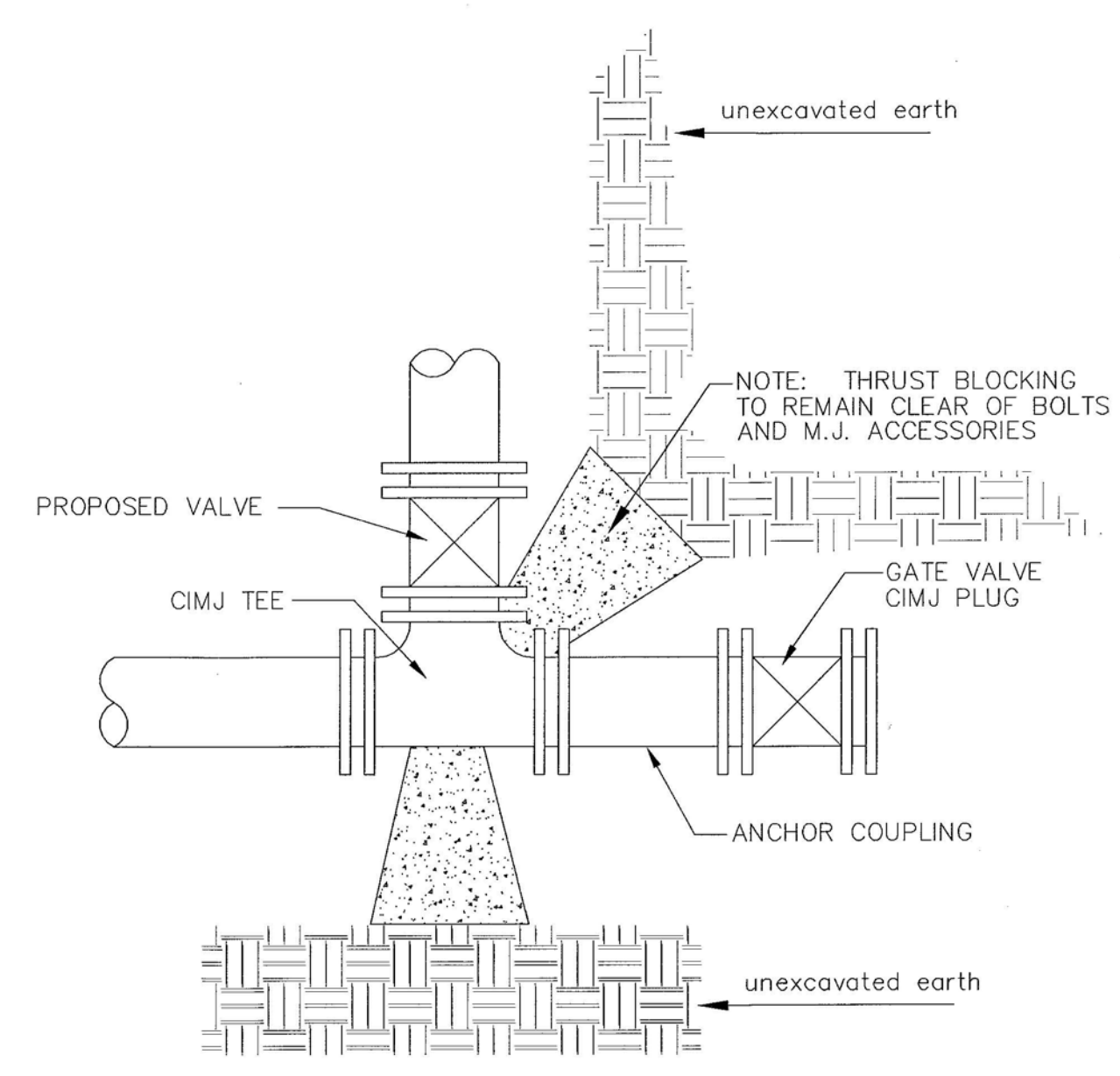
VERTICAL BEND



PLUG

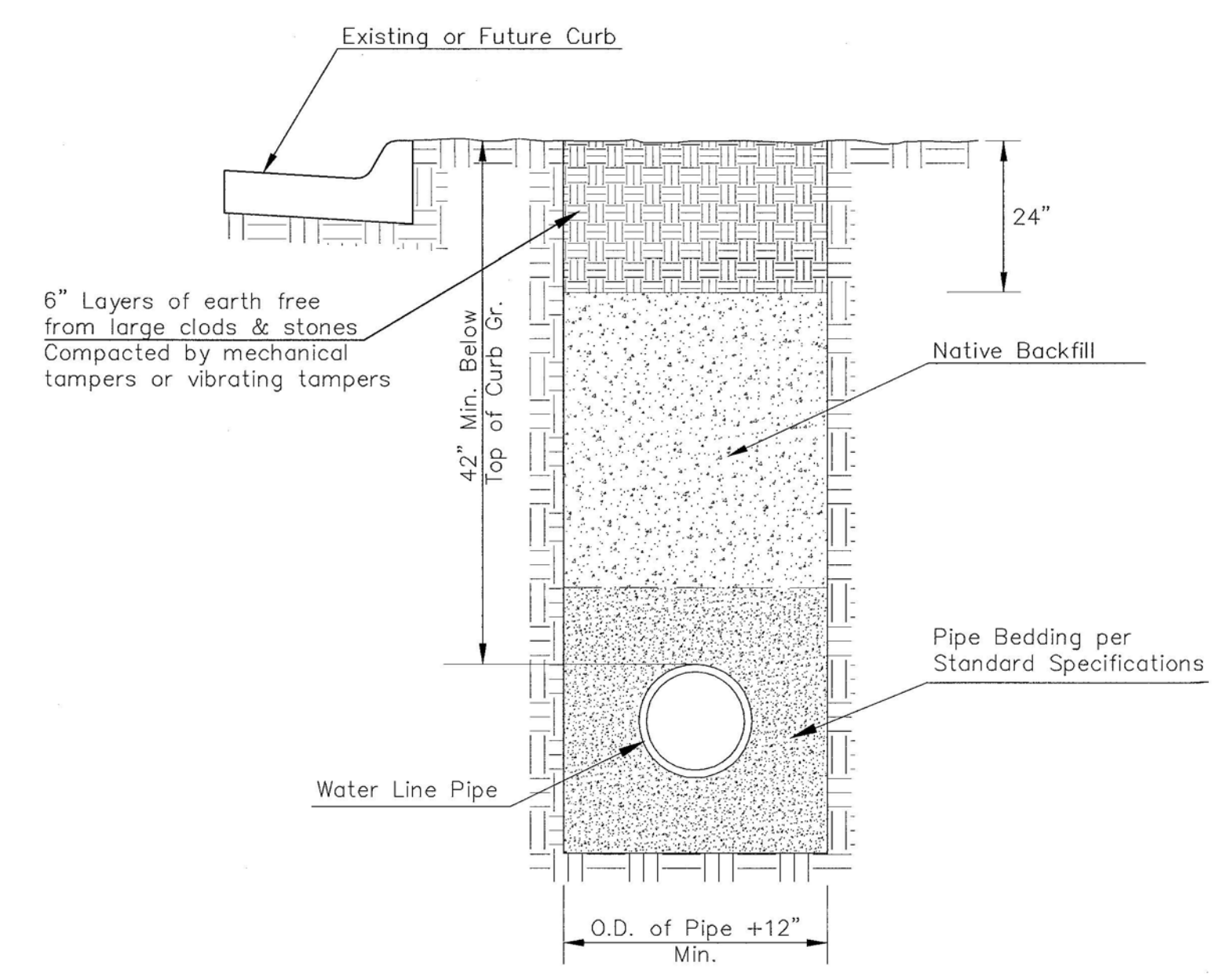
PIPE SIZE	THRUST AT FITTINGS IN TONS-AT 150#/IN <sup>2</sup> P					
	PLUG	90°	45°	22 1/2'	11 1/4'	TEE
6"	2.8	3.95	2.15	1.09	.55	2.8
8"	4.9	6.95	3.75	1.90	.96	4.9
12"	11.4	16.1	8.75	4.45	2.25	11.4
16"	20.15	28.5	15.4	7.85	3.95	20.15
20"	31.15	44.0	23.85	12.15	6.10	31.15
24"	44.55	63.0	34.1	17.4	8.75	44.55

TYPICAL THRUST BLOCKS



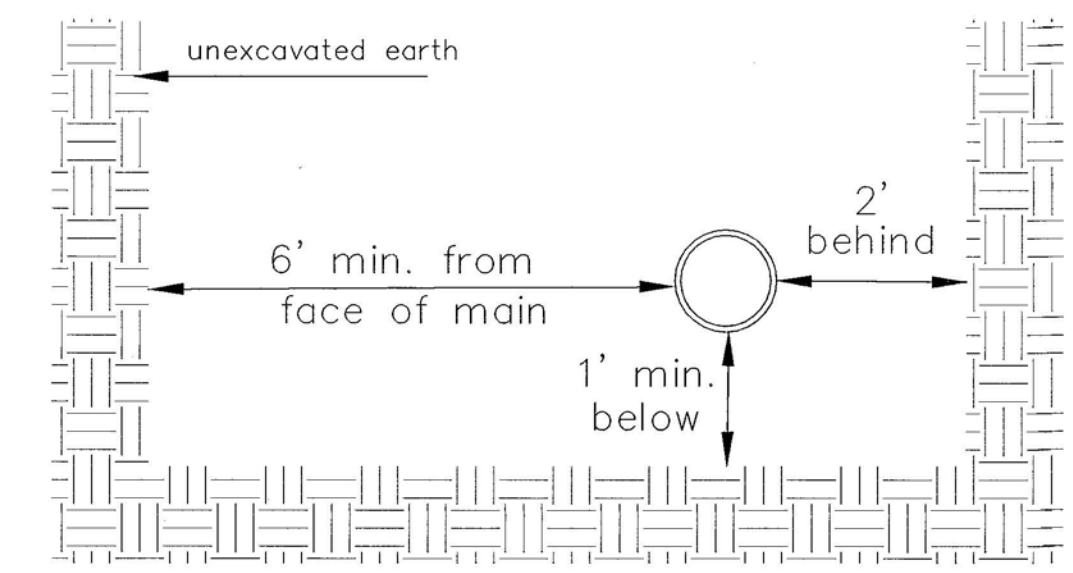
KEY BLOCK DETAIL

\* PLANS GOVERN  
UNLESS OTHERWISE NOTED ON PLANS



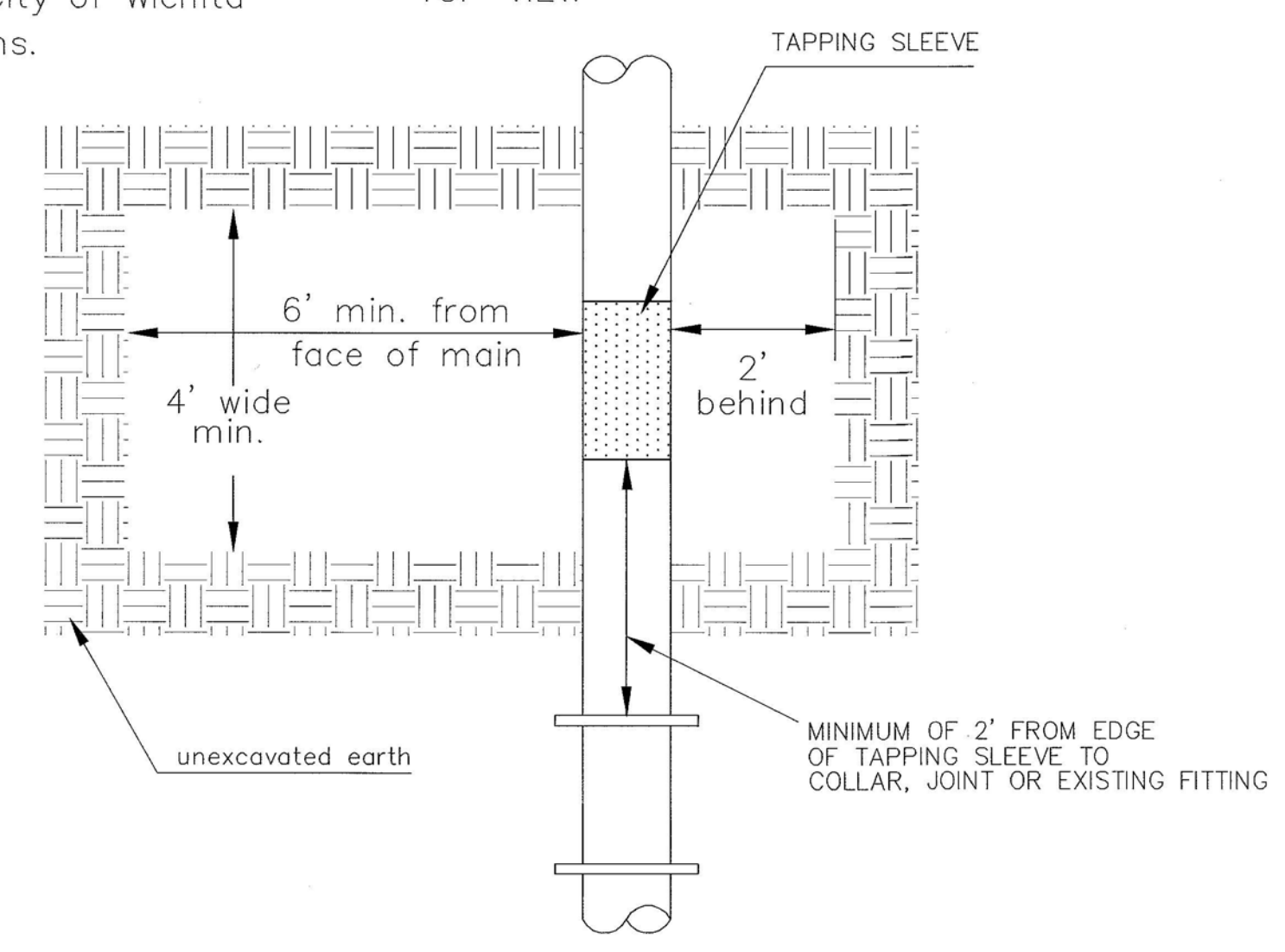
TRENCH COMPACTION IN ROAD RIGHT-OF-WAY

SIDE VIEW

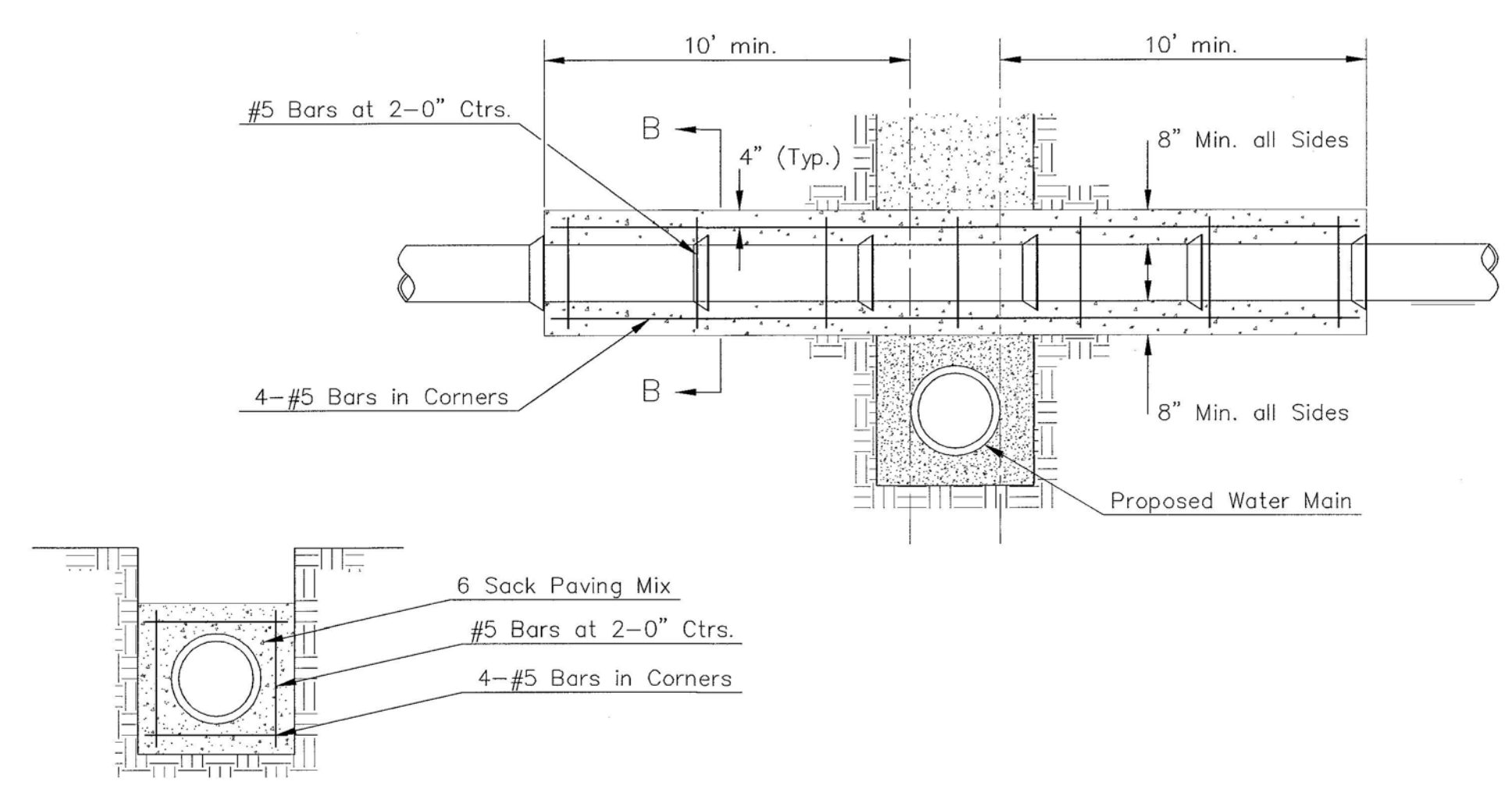


TOP VIEW

Note: When shoring is required it is to be per The City of Wichita Standard Specifications.



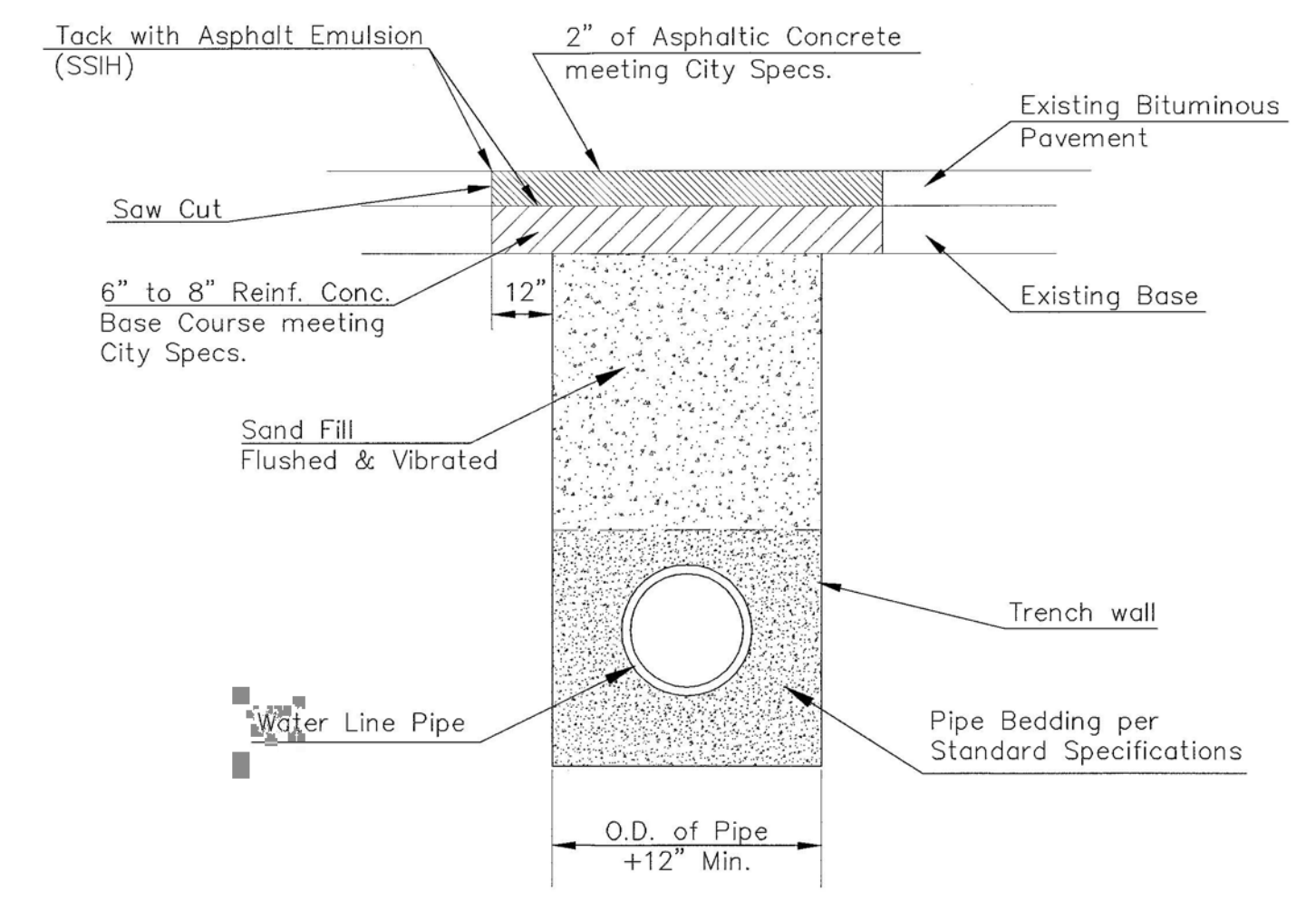
EXCAVATION FOR WET TAP



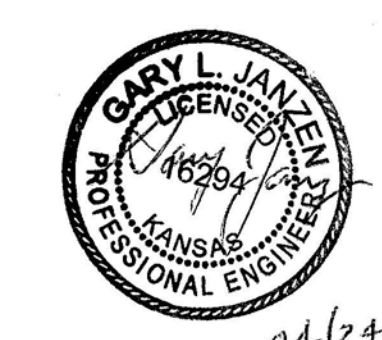
SECTION B-B

REINFORCED CONCRETE ENCASUREMENT OF SANITARY SEWER

Note: Encasement to begin and end at a Bell on Sanitary Sewer Pipe.



PAVEMENT REPLACEMENT & TRENCH COMPACTION UNDER EXISTING AND PROPOSED CITY ROADS



04/24/14

**CITY OF WICHITA**  
PUBLIC WORKS & UTILITIES ENGINEERING DIVISION

MISCELLANEOUS WATER DETAILS  
CITY ENGINEER  
**GARY JANZEN, P.E.**

PROJECT NUMBER	OCA NUMBER	DATE
		04/2014

CITY ENGINEER'S OFFICE  
CITY HALL - SEVENTH FLOOR  
455 NORTH MAIN STREET  
WICHITA, KANSAS 67202-1620  
(316) 268-4501

SHEET  
\_ of \_