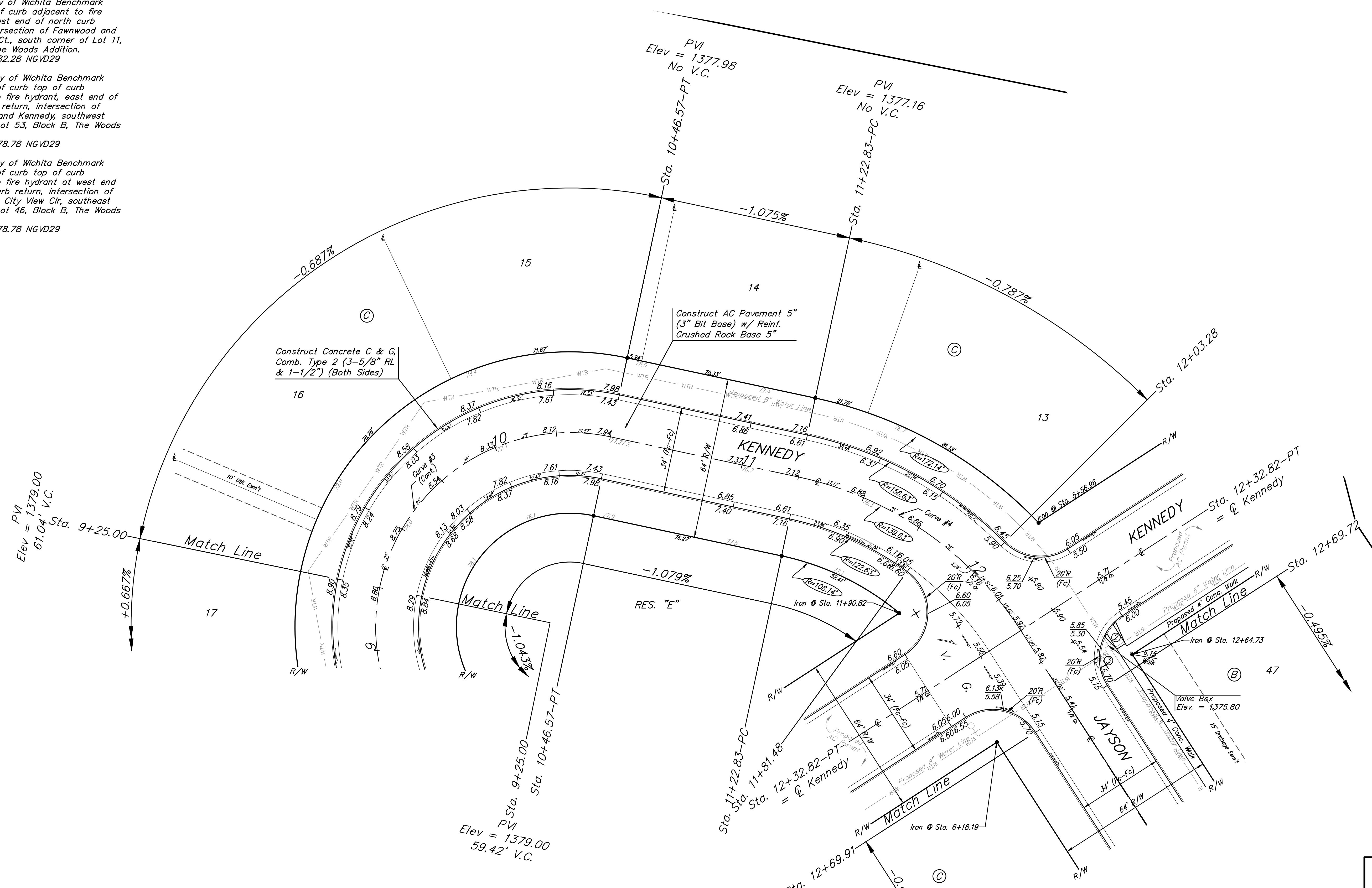
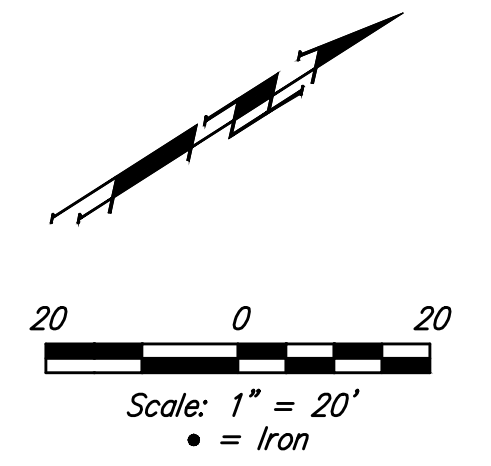


BENCHMARKS:
 BM #1: City of Wichita Benchmark
 Disc, top of curb adjacent to fire hydrant, west end of north curb return, intersection of Fawnwood and Fawnwood Ct., south corner of Lot 11, Block D, The Woods Addition.
 Elev. = 1382.28 NGVD29

BM #2: City of Wichita Benchmark
 Disc, Top of curb top of curb adjacent to fire hydrant, east end of north curb return, intersection of Fawnwood and Kennedy, southwest corner of Lot 53, Block B, The Woods Addition.
 Elev. = 1378.78 NGVD29

BM #3: City of Wichita Benchmark
 Disc, Top of curb top of curb adjacent to fire hydrant at west end of north curb return, intersection of Jayson and City View Cir, southeast corner of Lot 46, Block B, The Woods Addition.
 Elev. = 1378.78 NGVD29



Curve #3 (Cont.)
 Curve Data Based on Centerline
 Rad. = 77' Delta = 90°27'27" Tangent = 77.62'
 Arc = 121.57' L.C. = 109.33' Def./Ft. = 22.32232 Min.

Station	Arc	Face Chord Lengths		Defl.	Total Defl.
		8' Left	8' Right		
9+25.00	-	-	-	0°00'00"	0°00'00"
9+50.00	25.00'	32.97'	16.81'	9°18'03"	9°18'03"
9+75.00	25.00'	32.97'	16.81'	9°18'04"	18°36'07"
10+00.00	25.00'	32.97'	16.81'	9°18'03"	27°54'10"
10+25.00	25.00'	32.97'	16.81'	9°18'04"	37°12'14"
10+46.57	21.57'	28.48'	14.52'	8°01'30"	45°13'44"

Curve #4
 Curve Data Based on Centerline
 Rad. = 139.63' Delta = 44°58'59" Tangent = 57.81'
 Arc = 109.99' L.C. = 106.83' Def./Ft. = 12.26922 Min.

Station	Arc	Face Chord Lengths		Defl.	Total Defl.
		8' Left	8' Right		
11+22.83	-	-	-	0°00'00"	0°00'00"
11+25.00	2.17'	2.55'	1.78'	0°26'37"	0°26'37"
11+50.00	25.00'	29.34'	20.43'	5°06'44"	5°33'21"
11+75.00	25.00'	29.34'	20.43'	5°06'44"	10°40'05"
11+81.48	6.48'	7.61'	5.30'	1°19'30"	11°59'35"
12+03.28	21.80'	25.59'	17.82'	4°27'29"	16°27'04"
12+25.00	21.72'	25.50'	17.75'	4°26'29"	20°53'33"
12+32.82	7.82'	9.19'	6.40'	1°35'56"	22°29'29"

NOTE: Roll Type Curb & Gutter (Type 2) to be constructed on the pavement shown on this sheet. Top of curb elevations are given for Full Height Curb (Type 4).

	The Woods Addition - Phase 5	
	KENNEDY STA. 9+25.00 TO STA. 12+69.91	
<small>Baughman Company, P.A. 315 Ellis St. Wichita, KS 67211 P 316-262-7271 F 316-262-0149 ENGINEERING SURVEYING PLANNING LANDSCAPE ARCHITECTURE</small>		
PROJECT NUMBER 472-84949	DESIGN AEG	DRAWN JAK
REVISIONS:	APPROVED DATE 8/14	SCALE 1" = 20' SHEET
		10 OF 26