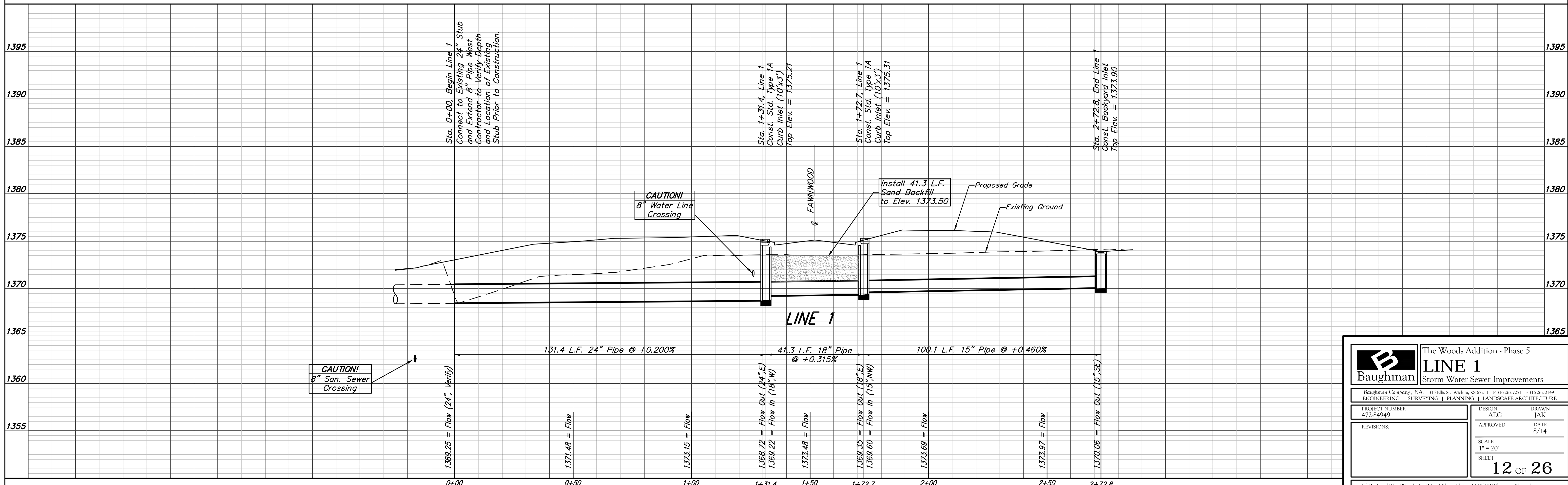
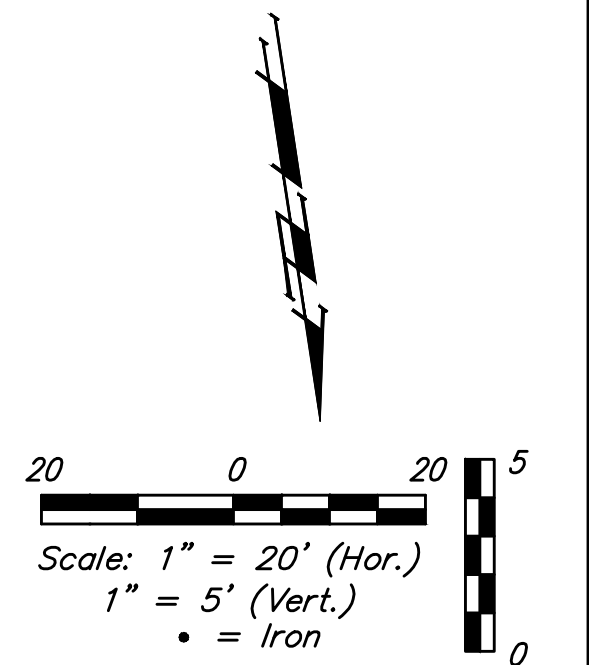
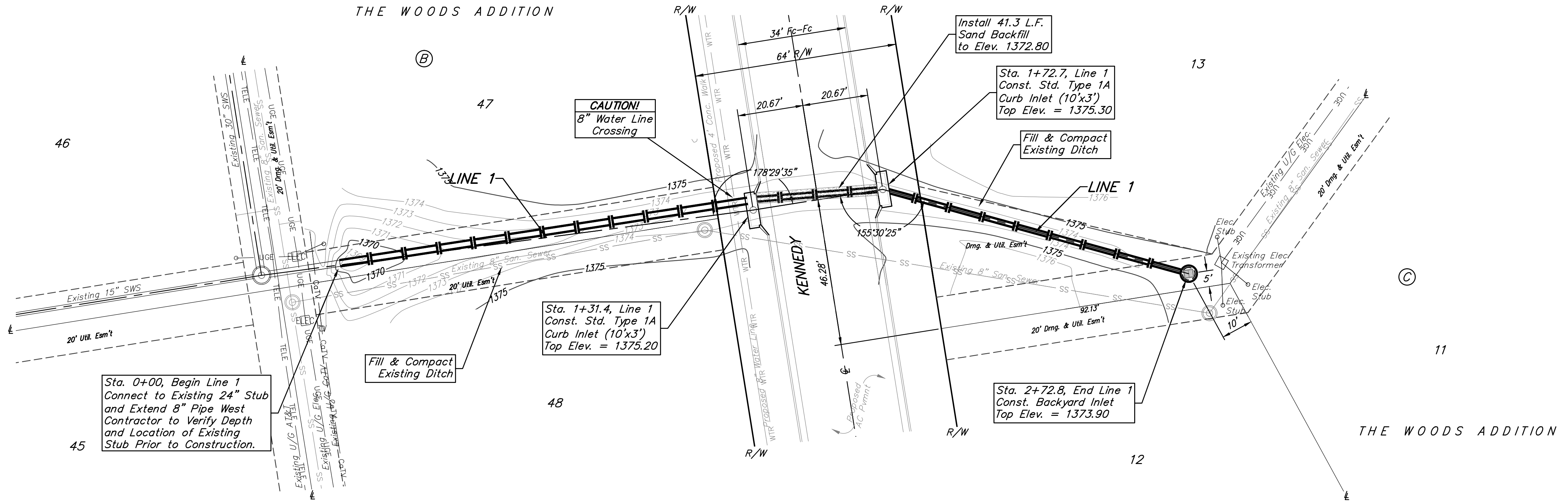


BENCHMARKS:
 BM #1: City of Wichita Benchmark Disc, top of curb adjacent to fire hydrant, west end of north curb return, intersection of Fawnwood and Kennedy, southwest corner of Lot 11, Block D, The Woods Addition.
 Elev. = 1382.28 NGVD29

BM #2: City of Wichita Benchmark Disc, Top of curb top of curb adjacent to fire hydrant, east end of north curb return, intersection of Fawnwood and Kennedy, southwest corner of Lot 53, Block B, The Woods Addition.
 Elev. = 1378.78 NGVD29

BM #3: City of Wichita Benchmark Disc, Top of curb top of curb adjacent to fire hydrant at west end of north curb return, intersection of Jayson and City View Cir, southeast corner of Lot 46, Block B, The Woods Addition.
 Elev. = 1378.78 NGVD29



		The Woods Addition - Phase 5	
		LINE 1	
Storm Water Sewer Improvements		<small>Baughman Company, P.A. 315 Ellis St. Wichita, KS 67211 P 316-262-7271 F 316-262-0149 ENGINEERING SURVEYING PLANNING LANDSCAPE ARCHITECTURE</small>	
PROJECT NUMBER 472-84949	DESIGN AEG	DRAWN JAK	
REVISIONS:	APPROVED	DATE 8/14	
	SCALE 1" = 20'	SHEET	
		12 OF 26	