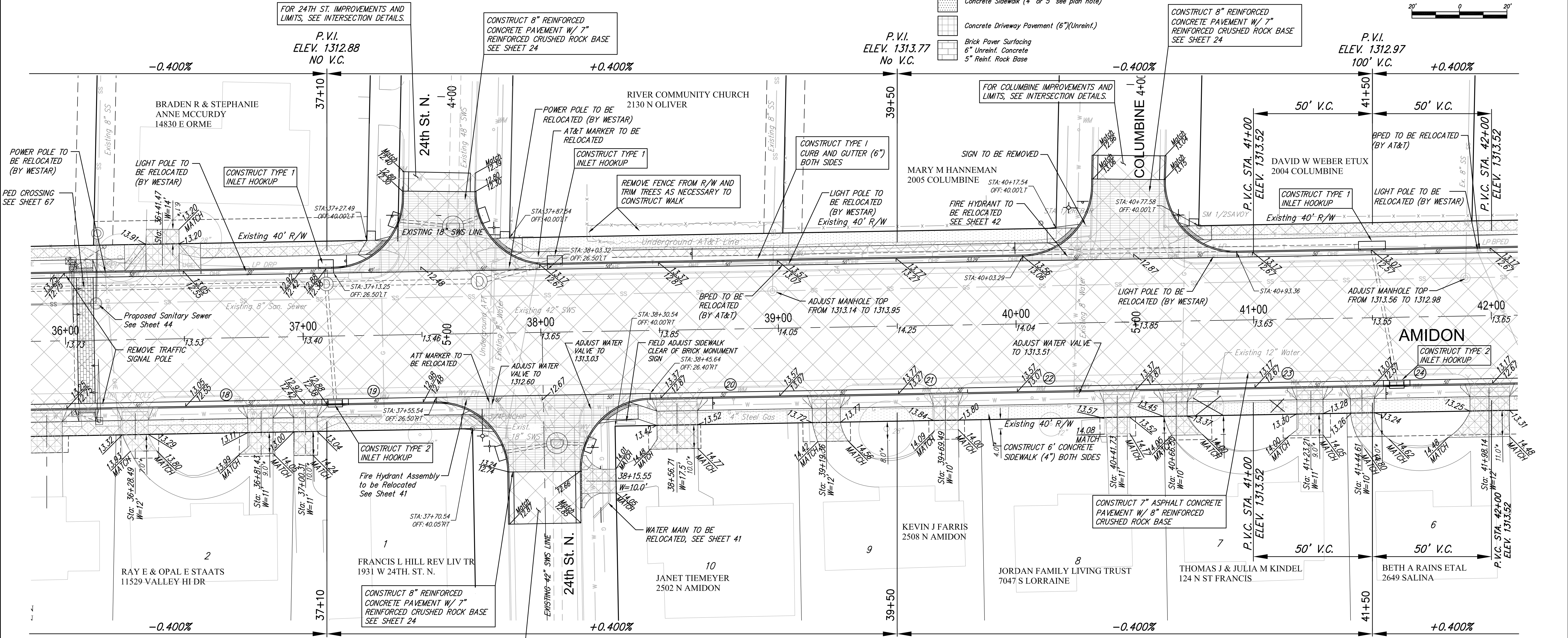
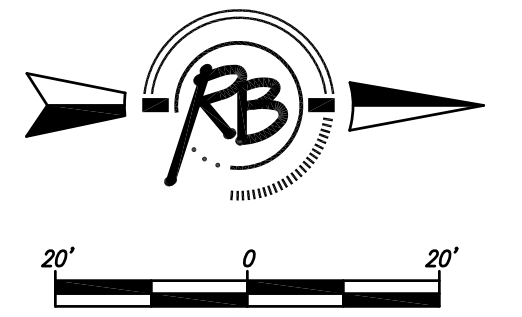


STORM WATER PLANS FOUND ON SHEETS 26 TO 38.

**LEGEND**

- Pavement to be removed
- Concrete Construction 8" Reinforced  
Crushed Stone Subgrade (7") - Geogrid Reinforcement (for base)
- Concrete Sidewalk (4" or 5" see plan note)
- Concrete Driveway Pavement (6")(Unreint.)
- Brick Paver Surfacing  
6" Unreinf. Concrete  
5" Reinf. Rock Base



NOTE: BRICK MONUMENT SIGNS IN STREET R/W SHALL BE REMOVED AND RESET ONTO PRIVATE PROPERTY

**Water Meter Relocation/Adjustment**

No	Existing Location	As-Built Location	Notes
18	36+69, Rt		
19	37+30, Rt		
20	38+81, Rt		
21	39+58, Rt		
22	40+06, Rt		
23	41+13, Rt		
24	41+65, Rt		

(X) - WATER METER TO BE RELOCATED OR ADJUSTED (SEE TABLE)  
5.0' - DISTANCE FROM R/W TO MATCH POINT ON DRIVEWAYS

**AMIDON - 21ST TO 29TH PAVING IMPROVEMENTS**  
AMIDON - 36+00 TO 42+00  
WICHITA, KANSAS

**RUGGLES & BOHM**

ENGINEERING | SURVEYING | LANDSCAPE ARCHITECTURE | GOVERNMENT

924 NORTH MAIN WICHITA, KANSAS 67203 P (316) 264-8008 F (316) 264-4621 WWW.RUGGLESANDBOHM.COM

DATE: Oct. 23, 2014

DESIGN: KWL

DRAWN: RA/DGZ

REVIEW:

PROJECT NUMBER: 472-84914	RB JOB NO.: 3647T	DWG. SCALE: 20	SHEET: 9
DRAWING FILE: ENGINEERING BASE {Amidon 5}			OF 133