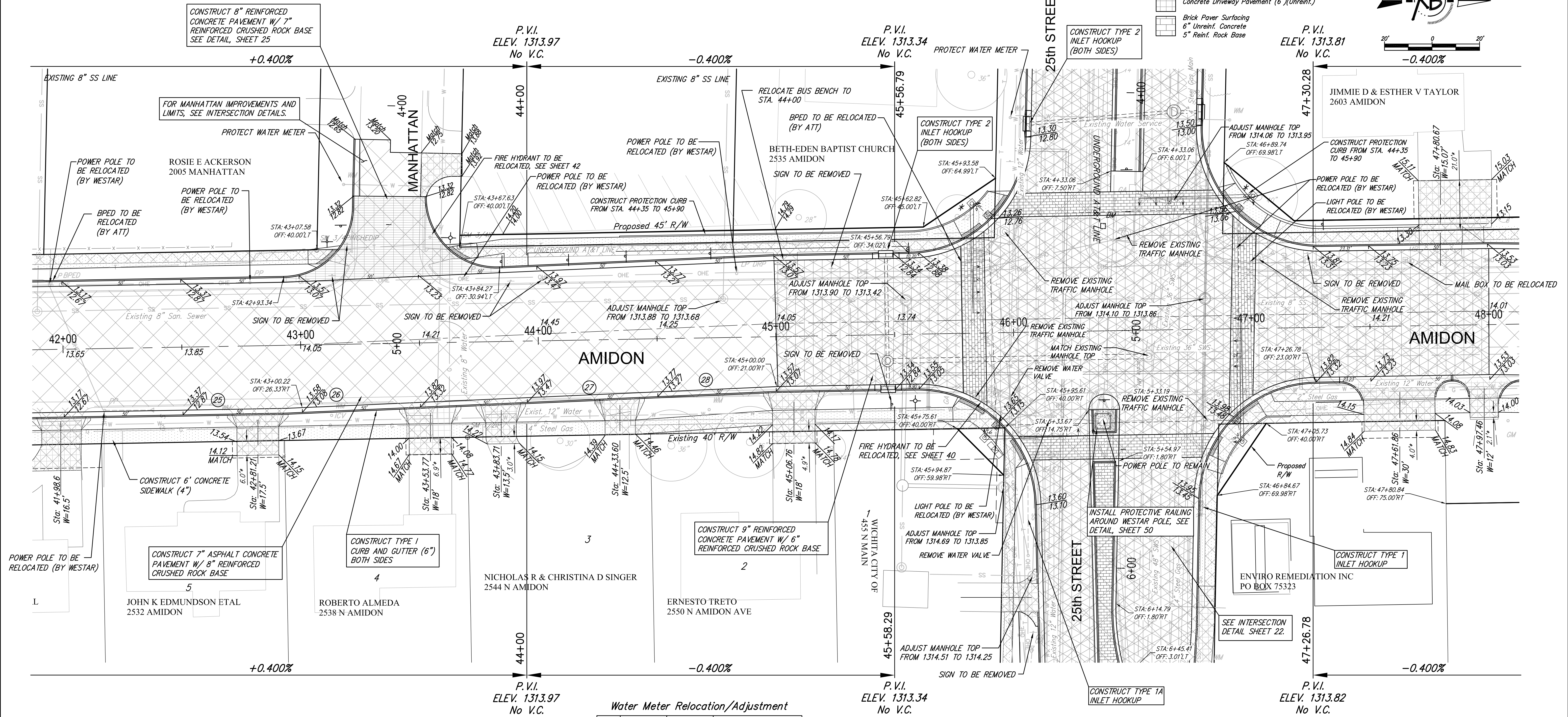
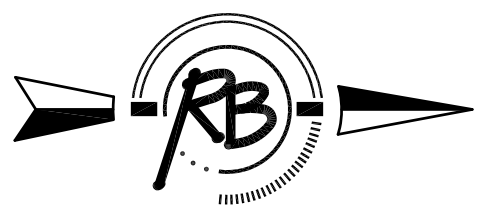


STORM WATER PLANS FOUND ON SHEETS 26 TO 38.

* Install Walk with Retaining Curb Where Indicated. See Detail, Sheet 4.

LEGEND

- Pavement to be removed
- Concrete Construction 8" Reinforced Crushed Stone Subgrade (7") - Geogrid Reinforcement (for base)
- Concrete Pavement (9")(AE)(Reinf.) Crushed Stone Subgrade (6") - Geogrid Reinforcement (for base)
- Concrete Sidewalk (4" or 5" see plan note)
- Concrete Driveway Pavement (6")(Unreinf.)
- Brick Paver Surfacing 6" Unreinf. Concrete 5" Reinf. Rock Base



Water Meter Relocation/Adjustment

No	Existing Location	As-Built Location	Notes
25	42+64, Rt		
26	43+12, Rt		
27	44+21, Rt		
28	44+71, Rt		

(XX) - WATER METER TO BE RELOCATED OR ADJUSTED (SEE TABLE)
 5.0' - DISTANCE FROM R/W TO MATCH POINT ON DRIVEWAYS

AMIDON - 21ST TO 29TH PAVING IMPROVEMENTS
 AMIDON - 42+00 TO 48+00
 WICHITA, KANSAS

RUGGLES & BOHM

ENGINEERING | SURVEYING | LANDSCAPE ARCHITECTURE | GOVERNMENT

924 NORTH MAIN WICHITA, KANSAS 67203 P (316) 264-8008 F (316) 264-4621 WWW.RBKANSAS.COM

DATE
Oct. 23, 2014

DESIGN
KWL

DRAWN
RA/DGZ

REVIEW

PROJECT NUMBER 472-84914	RB JOB NO. 3647T	DWG. SCALE 20	SHEET 10
DRAWING FILE ENGINEERING BASE {Amidon 6-25th}			OF 133