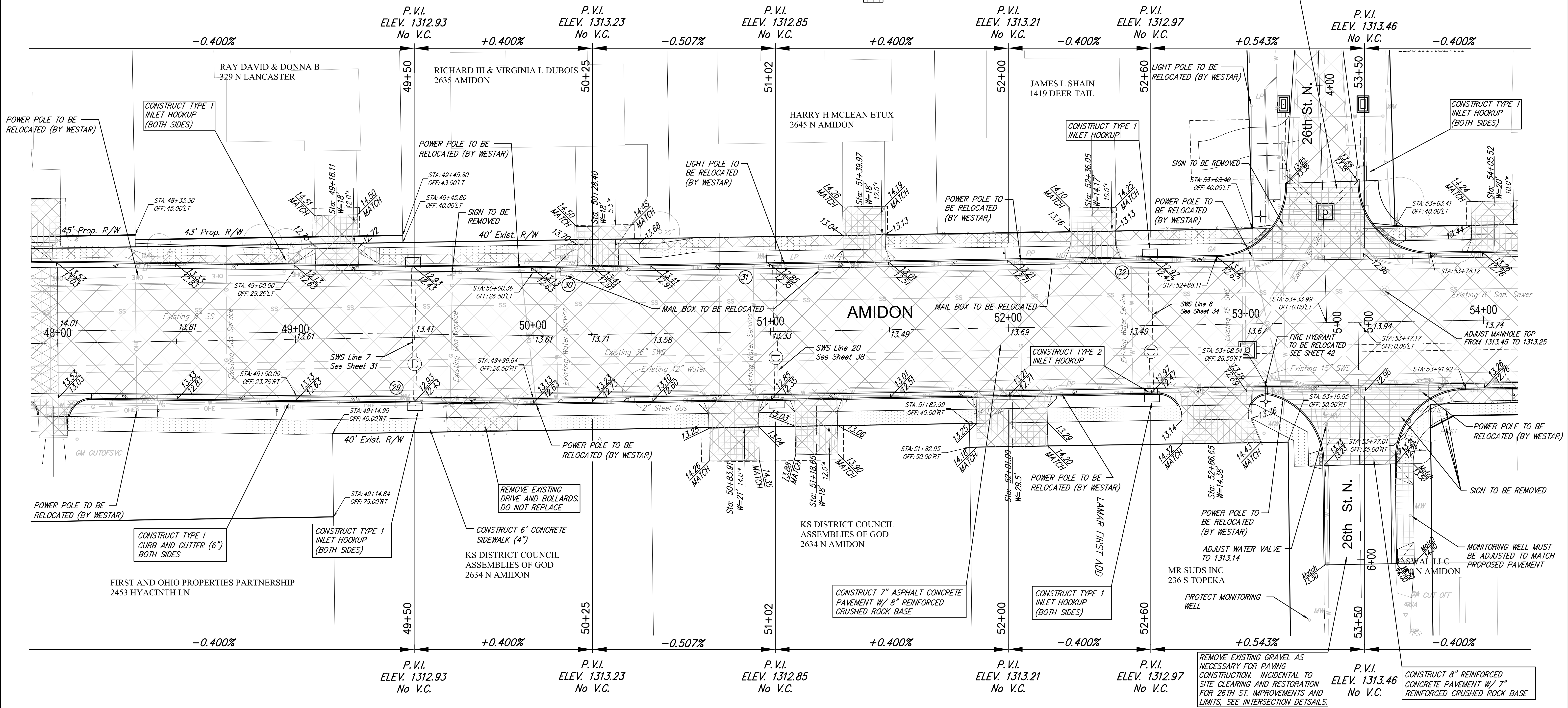
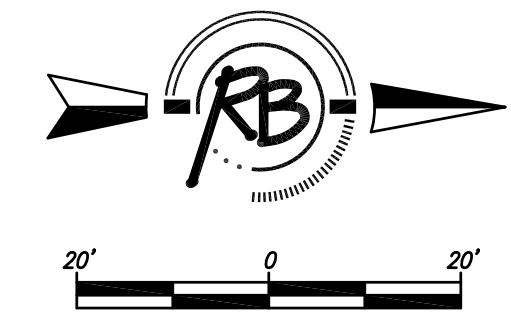


STORM WATER PLANS FOUND
ON SHEETS 26 TO 38.

LEGEND

- Pavement to be removed
- Concrete Construction 8" Reinforced
Crushed Stone Subgrade (7") - Geogrid Reinforcement (for base)
- Concrete Pavement (9")(AE)(Reinf.)
Crushed Stone Subgrade (6") - Geogrid Reinforcement (for base)
- Concrete Sidewalk (4" or 5" see plan note)
- Concrete Driveway Pavement (6")(Unreinf.)



Water Meter Relocation/Adjustment

No	Existing Location	As-Built Location	Notes
29	49+42, Rt		
30	50+10, Lt		Relocate
31	50+93, Lt		Relocate
32	52+52, Lt		Relocate

(XX) - WATER METER TO BE RELOCATED OR ADJUSTED (SEE TABLE)
5.0' - DISTANCE FROM R/W TO MATCH POINT ON DRIVEWAYS

REMOVE EXISTING GRAVEL AS NECESSARY FOR PAVING CONSTRUCTION. INCIDENTAL TO SITE CLEARING AND RESTORATION FOR 26TH ST. IMPROVEMENTS AND LIMITS. SEE INTERSECTION DETAILS.

AMIDON - 21ST TO 29TH PAVING IMPROVEMENTS
AMIDON - 48+00 TO 54+00
WICHITA, KANSAS

RUGGLES & BOHM

ENGINEERING | SURVEYING | LANDSCAPE ARCHITECTURE | GOVERNMENT

924 NORTH MAIN WICHITA, KANSAS 67203 P (316) 264-8008 F (316) 264-4621
WWW.RUGGLESANDBOHM.COM

DATE
Oct. 23, 2014

DESIGN
KWL

DRAWN
RA/DGZ

REVIEW

PROJECT NUMBER 472-84914	RB JOB NO. 36471	DWG. SCALE 20	SHEET 11 OF 133
-----------------------------	---------------------	------------------	--------------------

ENGINEERING BASE {Amidon 7}