

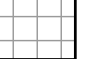
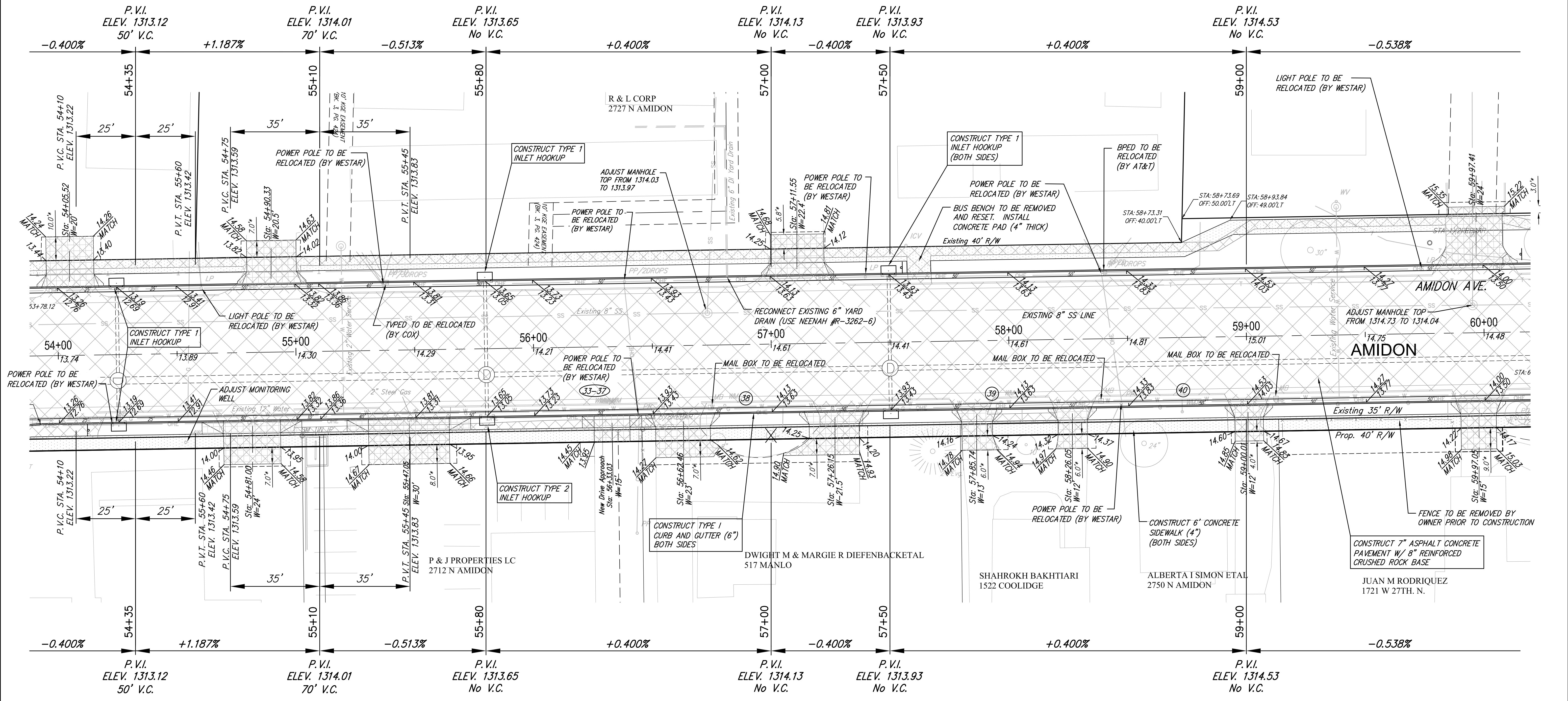
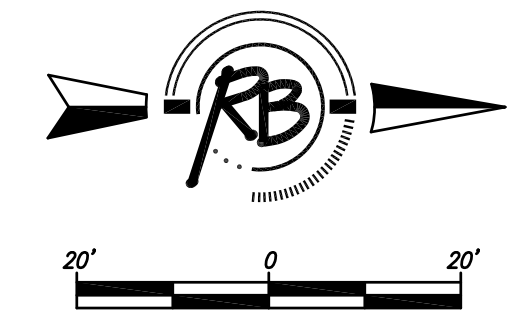


NOTE: COST OF CONNECTING YARD DRAIN AT 56+82 LEFT IS SUBSIDIARY TO THE BID ITEM FOR "SITE RESTORATION"

STORM WATER PLANS FOUND ON SHEETS 26 TO 38.

**LEGEND**

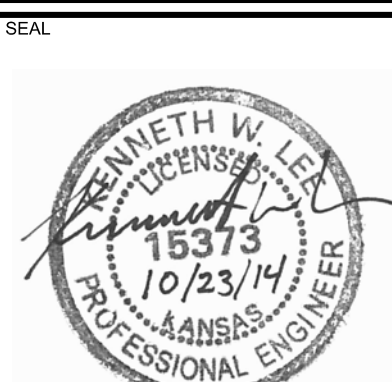
-  Pavement to be removed
-  Concrete Sidewalk (4" or 5" see plan note)
-  Concrete Driveway Pavement (6" Unreinf.)



No	Existing Location	As-Built Location	Notes
33	56+24, Rt		Relocate Service Clear of New Drive
34	56+26, Rt		Relocate Service Clear of New Drive
35	56+28, Rt		Relocate Service Clear of New Drive
36	56+30, Rt		Relocate Service Clear of New Drive
37	56+32, Rt		Relocate Service Clear of New Drive
38	56+80, Rt		
39	57+96, Rt		Replace Entire Service, Except Corporation
40	58+72, Rt		

(XX) - WATER METER TO BE RELOCATED OR ADJUSTED (SEE TABLE)  
 5.0' - DISTANCE FROM R/W TO MATCH POINT ON DRIVEWAYS

**AMIDON - 21ST TO 29TH PAVING IMPROVEMENTS**  
 AMIDON - 54+00 TO 60+00  
 WICHITA, KANSAS

	<b>RUGGLES &amp; BOHM</b>	DATE Oct. 23, 2014
	ENGINEERING   SURVEYING   LANDSCAPE ARCHITECTURE   GOVERNMENT 924 NORTH MAIN WICHITA, KANSAS 67203 P (316) 264-8008 F (316) 264-4621 WWW.RBKANSAS.COM	DESIGN KWL
PROJECT NUMBER 472-84914	RB JOB NO. 36471	DWG. SCALE 20
DRAWING FILE ENGINEERING BASE {Amidon 8}	SHEET <b>12</b> OF 133	