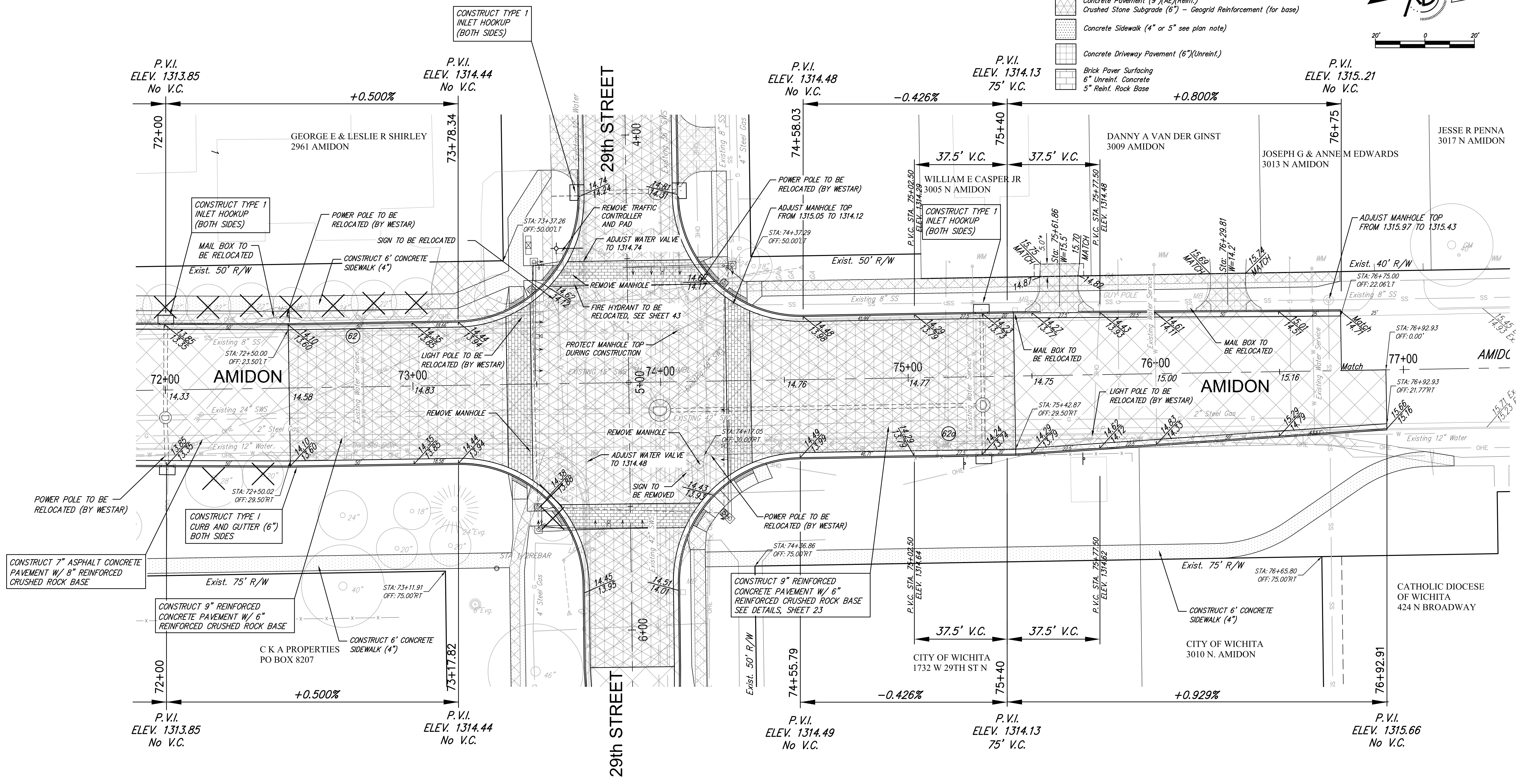
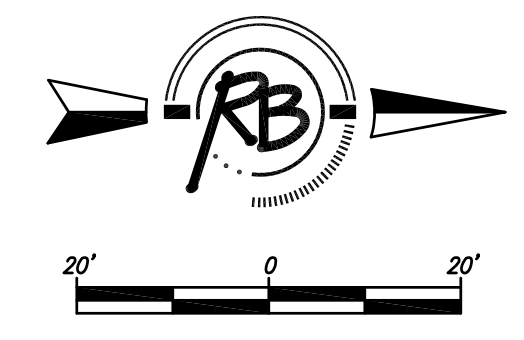


STORM WATER PLANS FOUND ON SHEETS 26 TO 38.

LEGEND

- Pavement to be removed
- Concrete Pavement (9")(AE)(Reinf.)
Crushed Stone Subgrade (6") - Geogrid Reinforcement (for base)
- Concrete Sidewalk (4" or 5" see plan note)
- Concrete Driveway Pavement (6")(Unreinf.)
- Brick Paver Surfacing
6" Unreinf. Concrete
5" Reinf. Rock Base



Water Meter Relocation/Adjustment

No	Existing Location	As-Built Location	Notes
62	72+80, Lt		
62a	75+15, Rt		Relocate

⊗ - WATER METER TO BE RELOCATED OR ADJUSTED (SEE TABLE)
5.0' - DISTANCE FROM R/W TO MATCH POINT ON DRIVEWAYS

AMIDON - 21ST TO 29TH PAVING IMPROVEMENTS
AMIDON - 72+00 TO 77+00
WICHITA, KANSAS

	RUGGLES & BOHM		DATE Oct. 23, 2014
	ENGINEERING SURVEYING LANDSCAPE ARCHITECTURE GOVERNMENT 924 NORTH MAIN WICHITA, KANSAS 67203 P (316) 264-8008 F (316) 264-4621 WWW.RBKANSAS.COM		DESIGN KWL
PROJECT NUMBER 472-84914	RB JOB NO. 3647T	DWG. SCALE 20	DRAWN RA/DGZ
DRAWING FILE ENGINEERING BASE [Amidon 11-29th]			REVIEW 15 OF 133