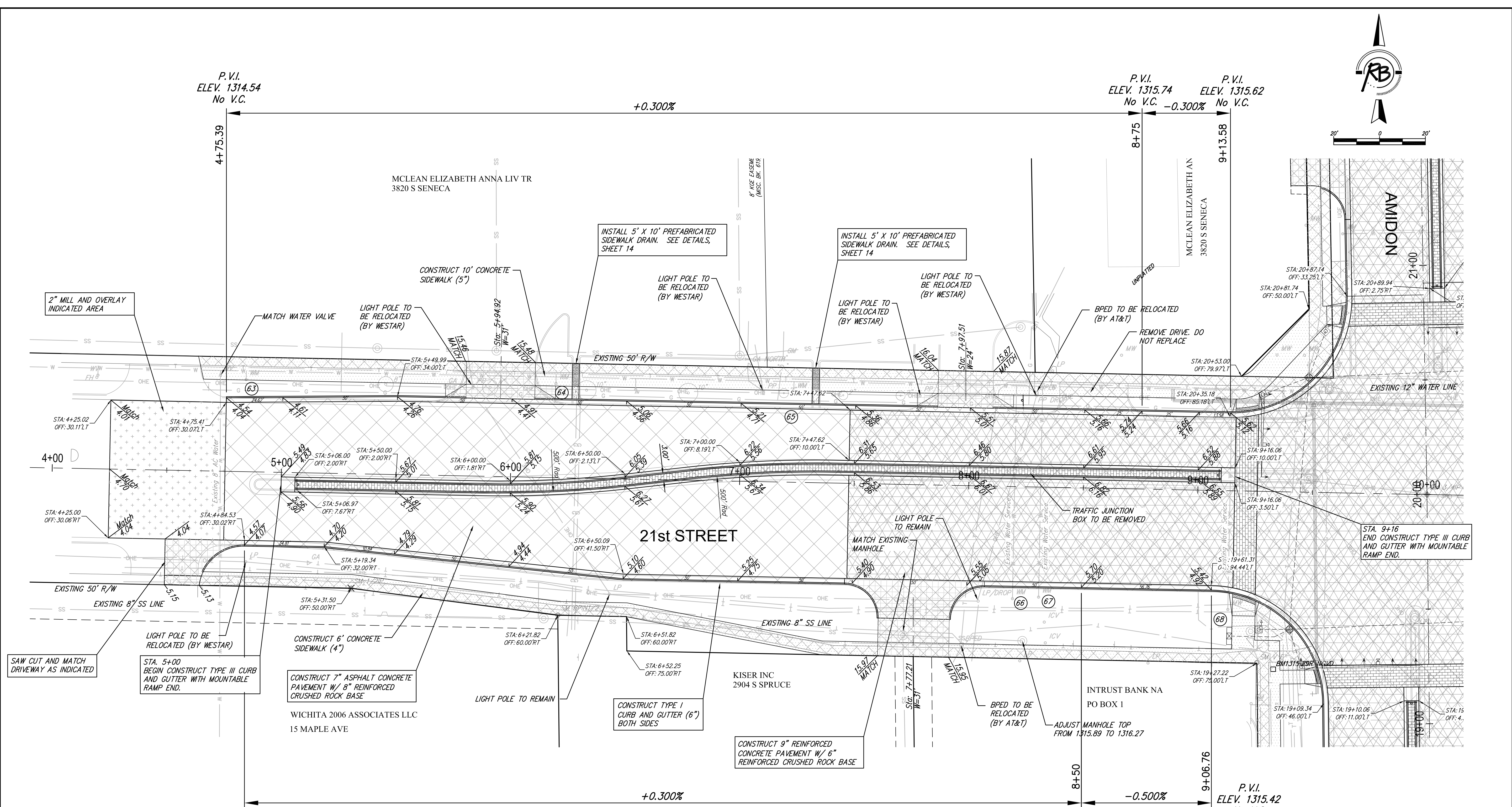


P.V.I.  
ELEV. 1314.54  
No V.C.

P.V.I.  
ELEV. 1315.74  
No V.C.

P.V.I.  
ELEV. 1315.62  
No V.C.



Water Meter Relocation/Adjustment

No	Existing Location	As-Built Location	Notes
63	4+84, Lt		
64	6+19, Lt		
65	7+23, Lt		
66	8+10, Rt		
67	8+21, Rt		
68	9+14, Rt		

LEGEND

- Pavement to be removed
- Concrete Construction 8" Reinforced Crushed Stone Subgrade (7") - Geogrid Reinforcement (for base)
- Concrete Pavement (9")(AE)(Reinf.) Crushed Stone Subgrade (6") - Geogrid Reinforcement (for base)
- Concrete Sidewalk (4" or 5" see plan note)
- Concrete Driveway Pavement (6")(Unreinf.)
- Brick Paver Surfacing
- 6" Unreinf. Concrete
- 5" Reinf. Rock Base

STORM WATER PLANS FOUND ON SHEETS 26 TO 38.

(XX) - WATER METER TO BE RELOCATED OR ADJUSTED (SEE TABLE)

(c) Copyright 2014, Ruggles & Bohm, P.A.

PAVING IMPROVEMENTS  
21st STREET - 4+00 TO 10+00  
WICHITA, KANSAS

ENGINEERING | SURVEYING | LANDSCAPE ARCHITECTURE | GOVERNMENT

924 NORTH MAIN WICHITA, KANSAS 67203 P (316) 264-8008 F (316) 264-4621 WWW.RBKANSAS.COM

DATE  
Oct. 23, 2014

DESIGN  
KWL

DRAWN  
RA/DGZ

REVIEW

PROJECT NUMBER  
472-84914

DRAWING FILE

RB JOB NO.  
3647T

DWG. SCALE  
20

SHEET  
**16**

OF  
133

ENGINEERING BASE {21st - 1}