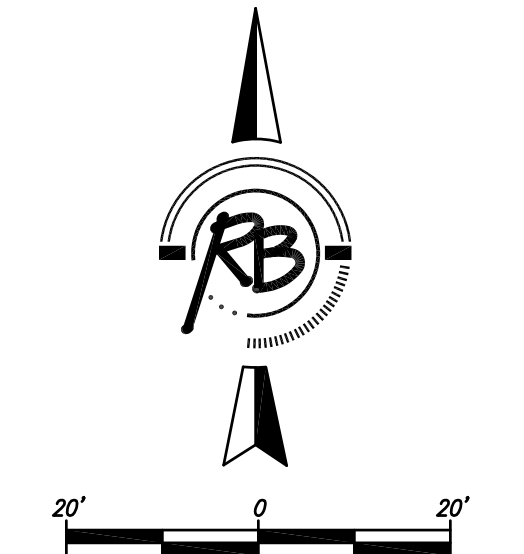


STORM WATER PLANS FOUND
ON SHEETS 26 TO 38.

LEGEND

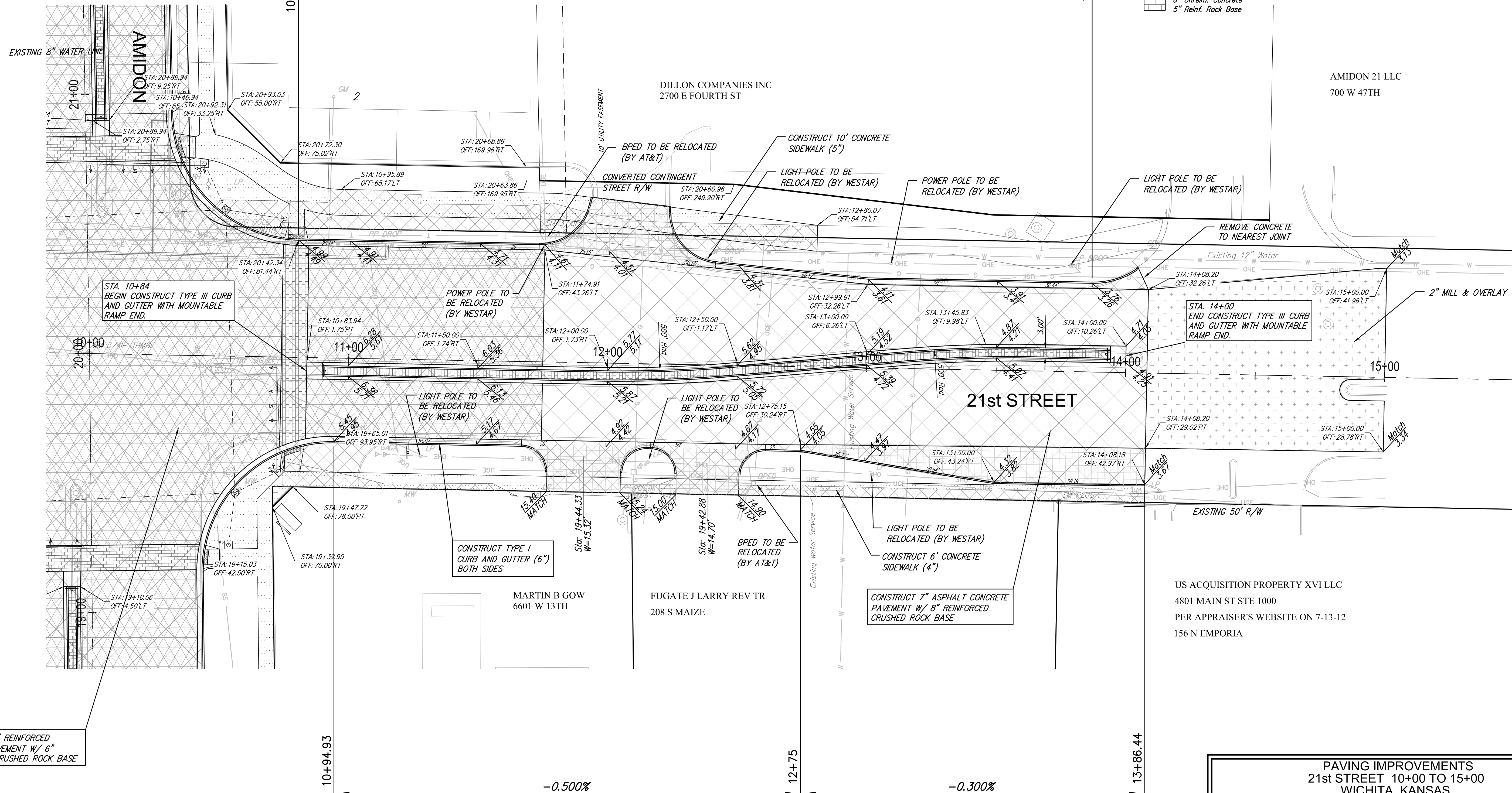
- Pavement to be removed
- Concrete Construction 8" Reinforced
Crushed Stone Subgrade (7") - Geogrid Reinforcement (for base)
- Concrete Pavement (9")(AE)(Reinf.)
Crushed Stone Subgrade (6") - Geogrid Reinforcement (for base)
- Concrete Sidewalk (4" or 5" see plan note)
- Concrete Driveway Pavement (6")(Unreinf.)
- Brick Paver Surfacing
6" Unreinf. Concrete
5" Reinf. Rock Base



P.V.I.
ELEV. 1314.99
No V.C.

P.V.I.
ELEV. 1313.76
No V.C.

-0.400%



P.V.I.
ELEV. 1315.45
No V.C.

P.V.I.
ELEV. 1314.55
No V.C.

P.V.I.
ELEV. 1314.17
No V.C.

-0.500%

-0.300%

CONSTRUCT 9" REINFORCED
CONCRETE PAVEMENT W/ 6"
REINFORCED CRUSHED ROCK BASE

PAVING IMPROVEMENTS 21st STREET 10+00 TO 15+00 WICHITA, KANSAS			
	RUGGLES & BOHM		DATE Oct. 23, 2014
	<small>ENGINEERING SURVEYING LANDSCAPE ARCHITECTURE GOVERNMENT</small> <small>924 NORTH MAIN WICHITA, KANSAS 67203 P (316) 264-8008 F (316) 264-4621</small> <small>WWW.RUGGLESANDBOHM.COM</small>		DESIGN KWL
PROJECT NUMBER 472-84914	RB JOB NO. 36477	DWG. SCALE 20	DRAWN RA/DGZ
DRAWING FILE ENGINEERING BASE [21st - 2]			REVIEW
			SHEET 17 OF 133