
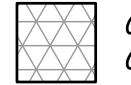
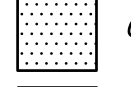
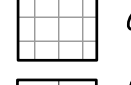
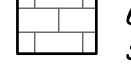
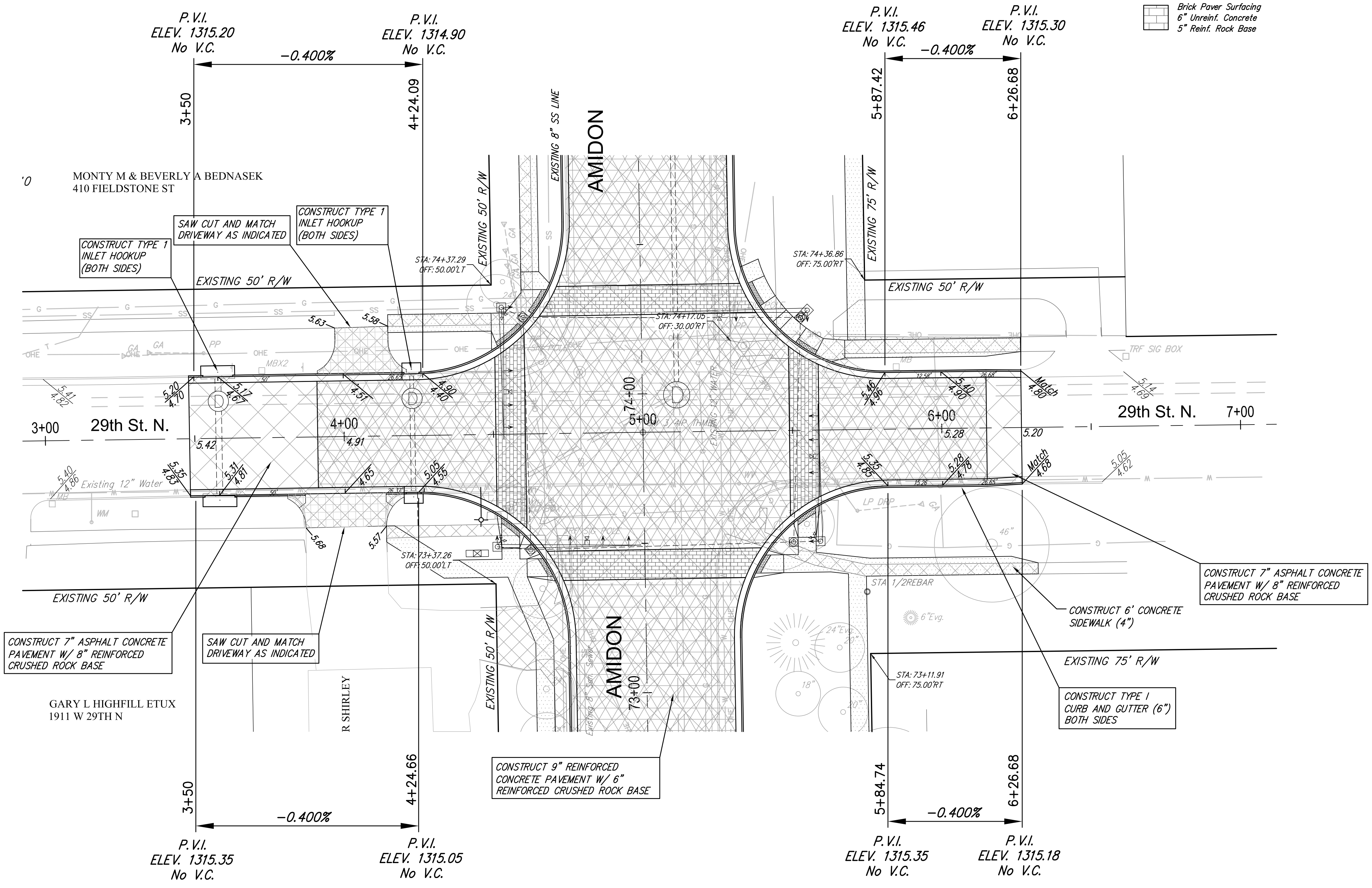
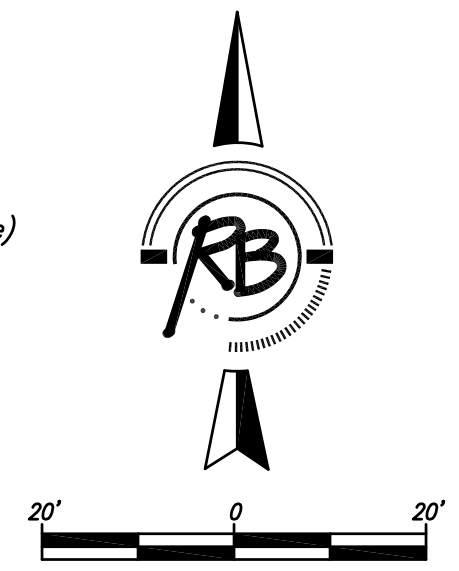




STORM WATER PLANS FOUND  
ON SHEETS 26 TO 38.

**LEGEND**

-  Pavement to be removed
-  Concrete Pavement (9")(AE)(Reinf.)  
Crushed Stone Subgrade (6") - Geogrid Reinforcement (for base)
-  Concrete Sidewalk (4" or 5" see plan note)
-  Concrete Driveway Pavement (8")(Unreinf.)
-  Brick Paver Surfacing  
6" Unreinf. Concrete  
5" Reinf. Rock Base



<b>PAVING IMPROVEMENTS</b> 29th STREET NORTH WICHITA, KANSAS			
	 <b>RUGGLES &amp; BOHM</b> ENGINEERING   SURVEYING   LANDSCAPE ARCHITECTURE   GOVERNMENT <small>924 NORTH MAIN WICHITA, KANSAS 67203 P (316) 264-8008 F (316) 264-4621 WWW.RBKANSAS.COM</small>	DATE Oct. 23, 2014 DESIGN KWL DRAWN RA/DGZ REVIEW	SHEET <b>19</b> OF 133
PROJECT NUMBER 472-84914	RB JOB NO. 3647T	DWG. SCALE 20	
DRAWING FILE ENGINEERING BASE {29th}			