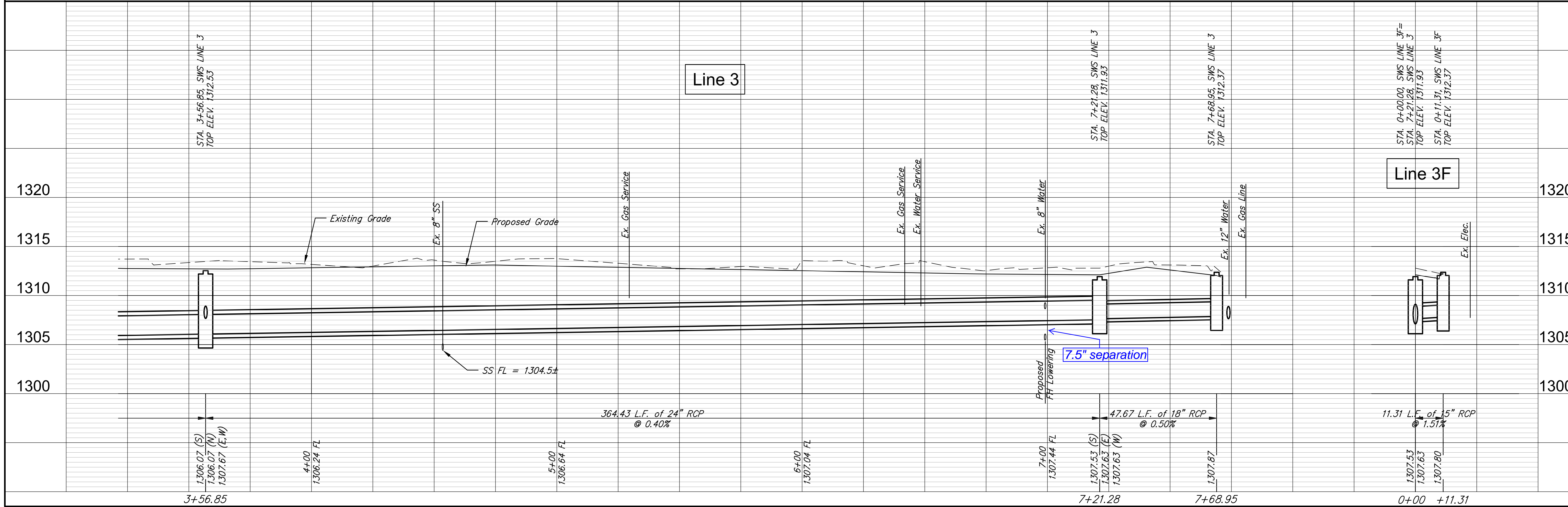


ALL STORM SEWER ON THIS PROJECT UNDER PAVEMENT OR CURB SHALL BE SAND BACKFILLED, JETTED AND VIBRATED.



RUGGLES & BOHM
PROFESSIONAL ENGINEERS

PROJECT NUMBER: 472-84914
DESIGN: KWL
DRAWING FILE: DRAWING BASE (SWS 3)
ENGINEERING BASE (SWS 3)

AMIDON IMPROVEMENTS
SWS LINE 3
WICHITA, KANSAS

REVIEW: ..
DATE: Oct. 23, 2014

RB JOB: 3647T
SHEET: 28 OF 133