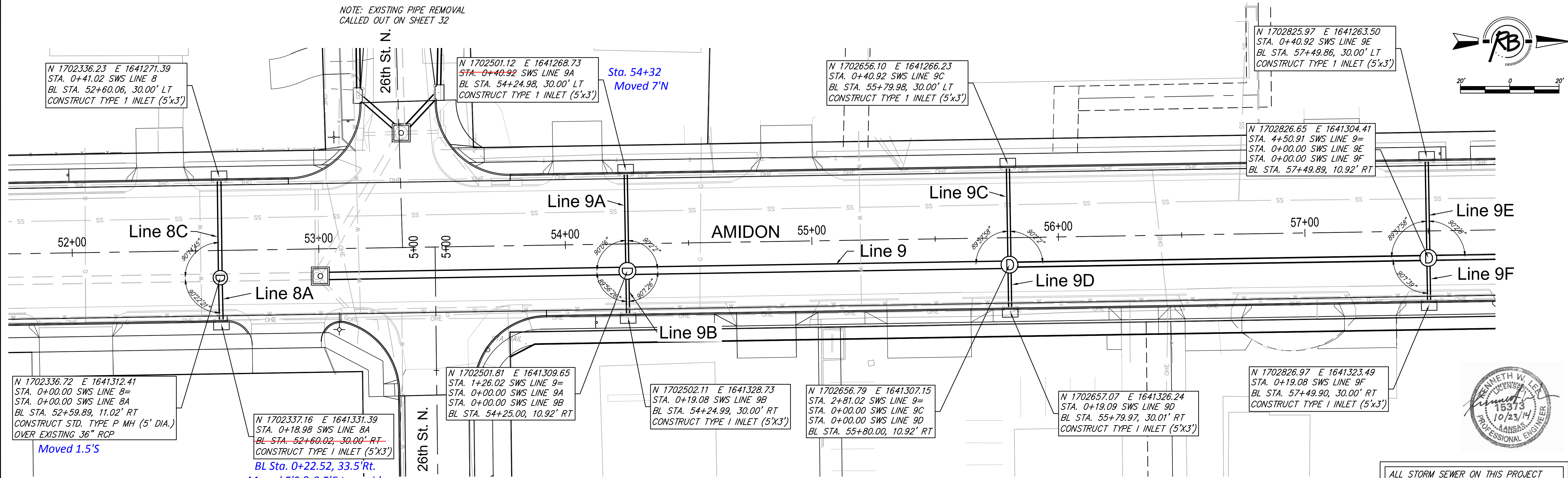
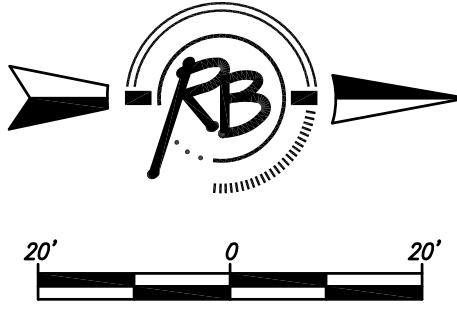


NOTE: EXISTING PIPE REMOVAL CALLED OUT ON SHEET 32



Moved 1.5'S
 Moved 5'S & 3.5'E to avoid wl and driveway radius.

Line	Station	Top Elevation	Bottom Elevation	Length	Slope	Notes
Line 8	0+00	1305.35	1308.85	41.02 L.F. of 18" RCP @ 0.50%	0.68%	Ex. 18" SS
	0+41.02	1309.13	1305.66			
Line 8A	0+00	1305.35	1309.08	18.98 L.F. of 18" RCP @ 0.41%	0.52%	Ex. 12" WL, Ex. Gas Line, CAUTION! 12" Waterline Crossing
	0+18.98	1309.18	1306.09			
Line 9A	0+00	1303.30	1307.93	40.92 L.F. of 15" RCP @ 0.50%	0.76%	Ex. 18" SS
	+40.92	1308.24	1306.25			
Line 9B	0+00	1303.30	1305.14	19.08 L.F. of 15" RCP @ 0.45%	0.52%	Ex. 12" WL, Ex. Gas Line
	+17.24	1305.05	1305.14			
Line 9C	0+00	1304.08	1308.34	40.92 L.F. of 15" RCP @ 0.50%	0.52%	Ex. 18" SS
	+40.92	1308.54	1306.05			
Line 9D	0+00	1304.08	1305.27	19.08 L.F. of 15" RCP @ 1.00%	1.00%	Ex. 12" WL, Ex. Gas Line
	+17.24	1305.08	1305.27			
Line 9E	0+00	1305.93	1308.46	40.92 L.F. of 15" RCP @ 0.50%	2.61%	Ex. 18" SS
	+40.92	1309.53	1306.69			
Line 9F	0+00	1305.93	1306.03	19.08 L.F. of 15" RCP @ 0.50%	0.50%	Ex. 12" WL, Ex. Gas Line
	+19.08	1306.03	1306.03			



PROJECT NUMBER: 472-84914
 PERSON: KWL
 DATE: Oct. 23, 2014
 DRAWN: RA
 REVIEW: [Blank]
 AMIDON IMPROVEMENTS
 SWS LINE 8, 9A, 9B, 9C, 9D, 9E, 9F
 WICHITA, KANSAS
 SHEET: 34 OF 133