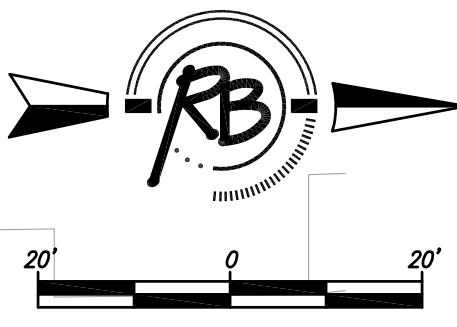
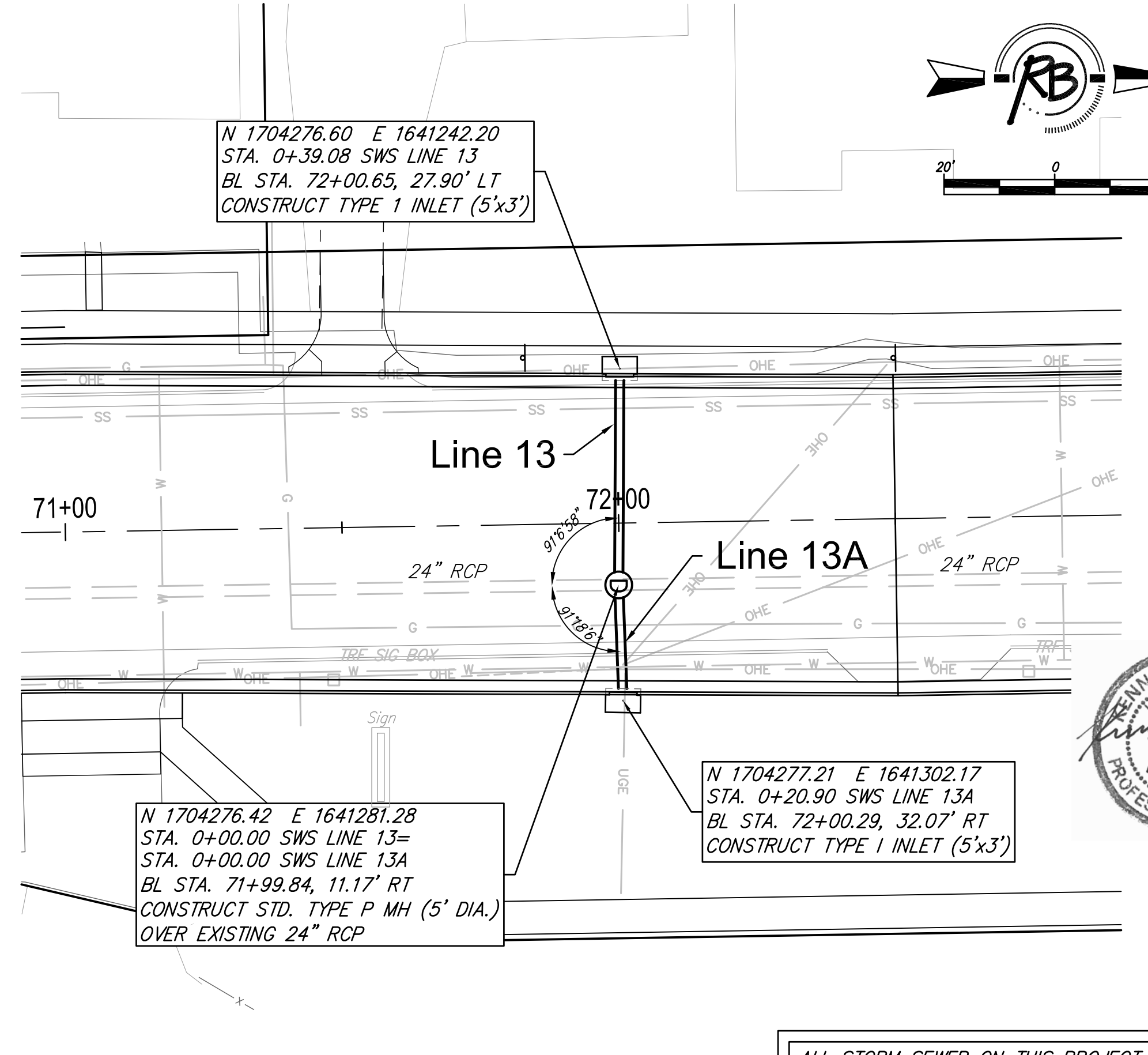
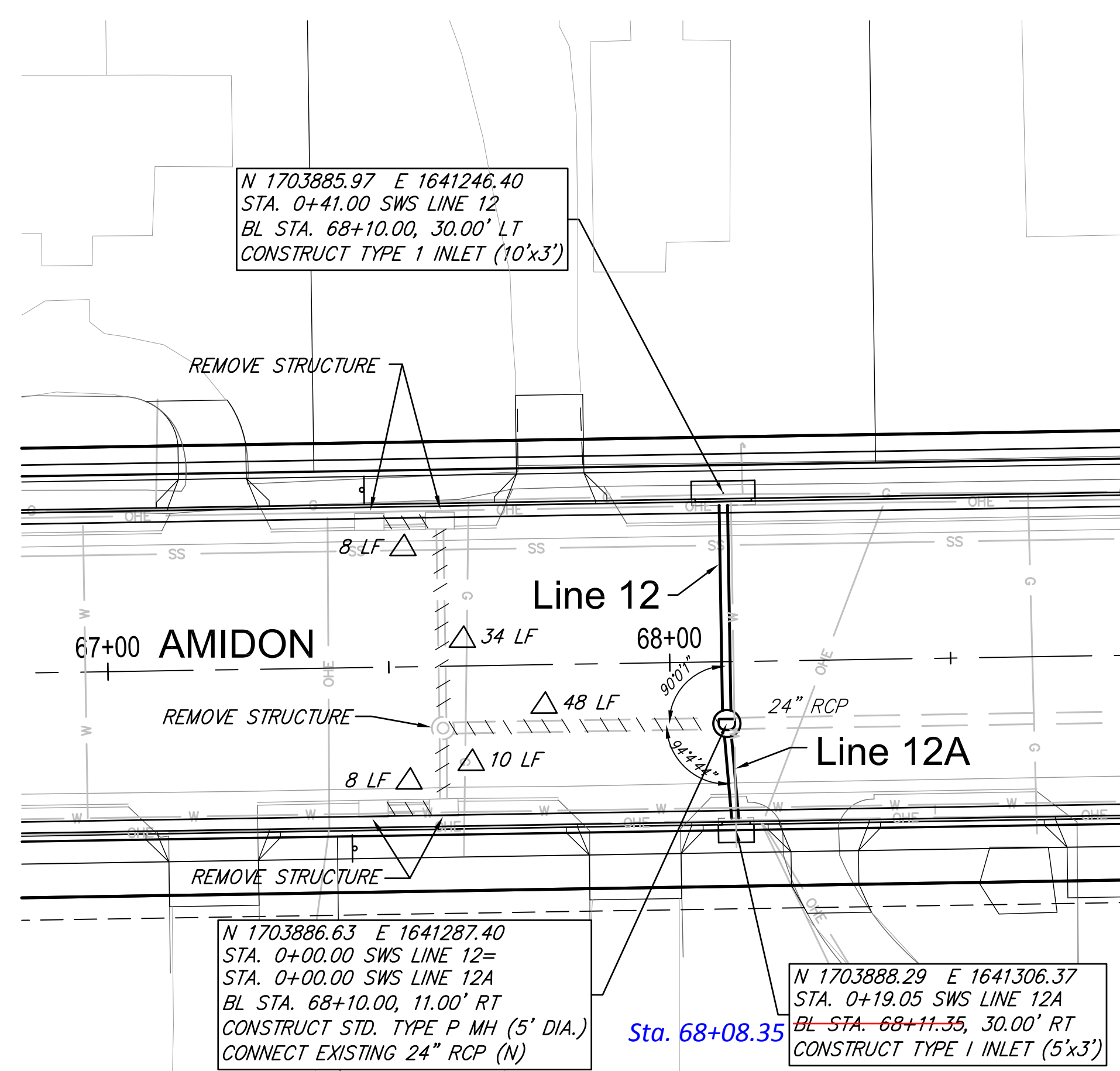
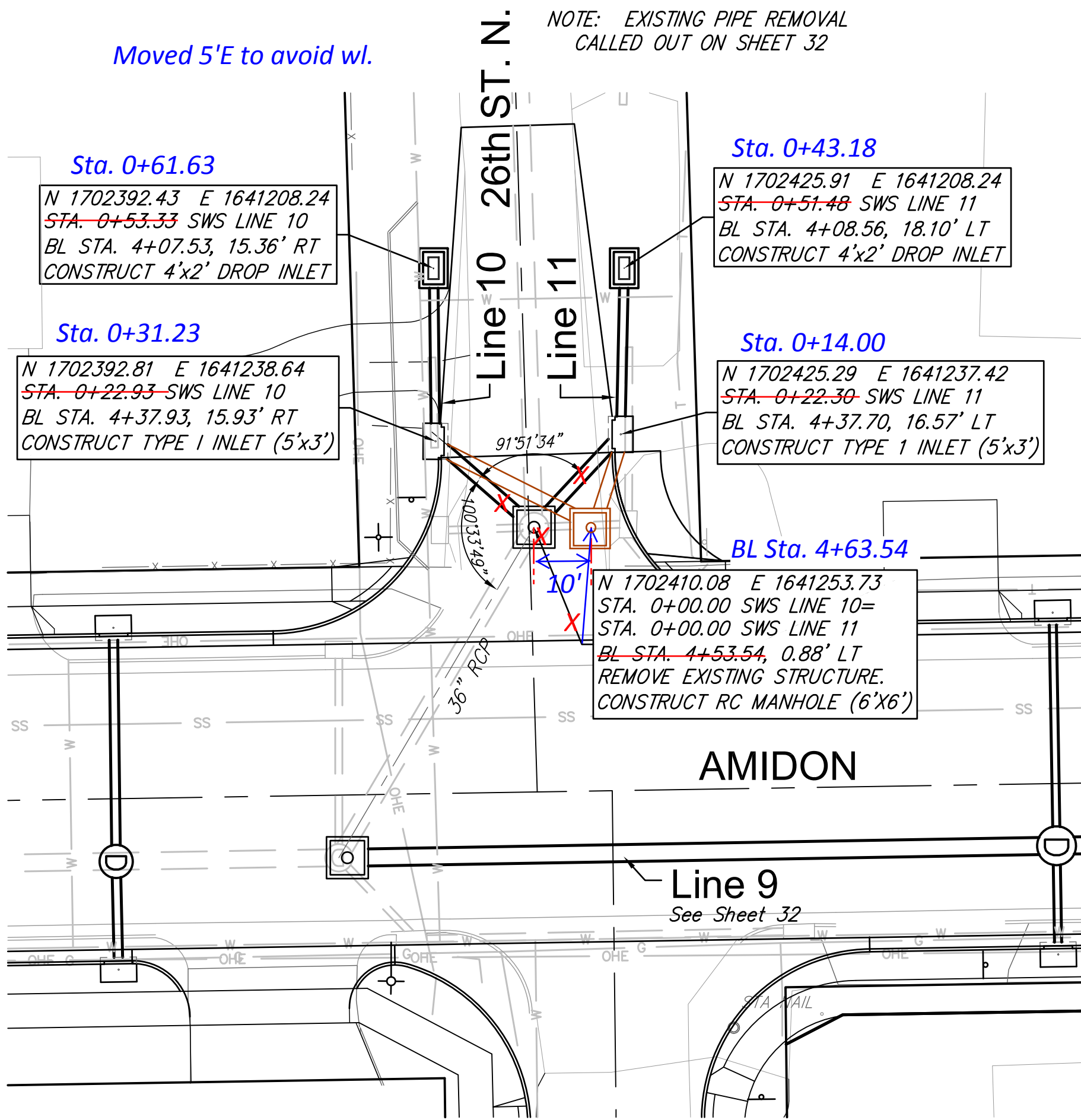


Moved 5'E to avoid wl.

NOTE: EXISTING PIPE REMOVAL CALLED OUT ON SHEET 32



ALL STORM SEWER ON THIS PROJECT UNDER PAVEMENT OR CURB SHALL BE SAND BACKFILLED, JETTED AND VIBRATED.

△XX LF - REMOVE "X" LF STORM SEWER PIPE.

Line	Station	Top Elevation	Bottom Elevation	Notes
Line 10	0+00.00	1313.31	1302.41	SWS LINE 10
	0+31.23	1313.31	1303.82	4.9% slope
	0+53.33	1313.00	1305.58	30.40 L.F. of 18" RCP @ 0.50%
Line 11	0+00.00	1313.31	1302.41	SWS LINE 11
	0+14.00	1313.31	1306.03	2.14% slope
	0+43.18	1311.70	1304.59	29.18 L.F. of 18" RCP @ 0.50%
Line 12	0+00.00	1313.81	1309.99	SWS LINE 12
	0+41.00	1313.79	1310.49	41.00 L.F. of 18" RCP @ 0.50%
Line 12A	0+00.00	1313.81	1309.99	SWS LINE 12A
	0+19.05	1313.79	1310.39	19.05 L.F. of 15" RCP @ 0.50%
Line 13	0+00.00	1313.85	1307.99	SWS LINE 13
	0+39.08	1313.85	1310.01	39.08 L.F. of 18" RCP @ 0.50%
Line 13A	0+00.00	1313.85	1307.99	SWS LINE 13A
	0+20.89	1313.85	1311.39	20.89 L.F. of 12" DICL @ 0% slope

RUGGLES & BOHM  
ENGINEERING

AMIDON IMPROVEMENTS  
SWS LINE 10, 11, 12, 12A, 13, 13A  
WICHITA, KANSAS

PROJECT NUMBER: 472-84914  
DESIGNER: KWL  
DRAWN: RA  
ENGINEERING BASE: [SWS 10]

REVIEW: ...  
DATE: Oct. 23, 2014

35 OF 133