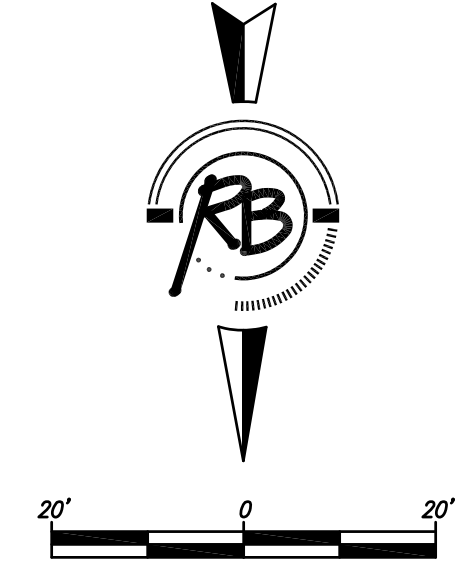
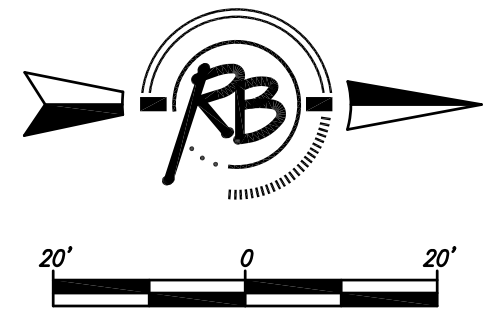
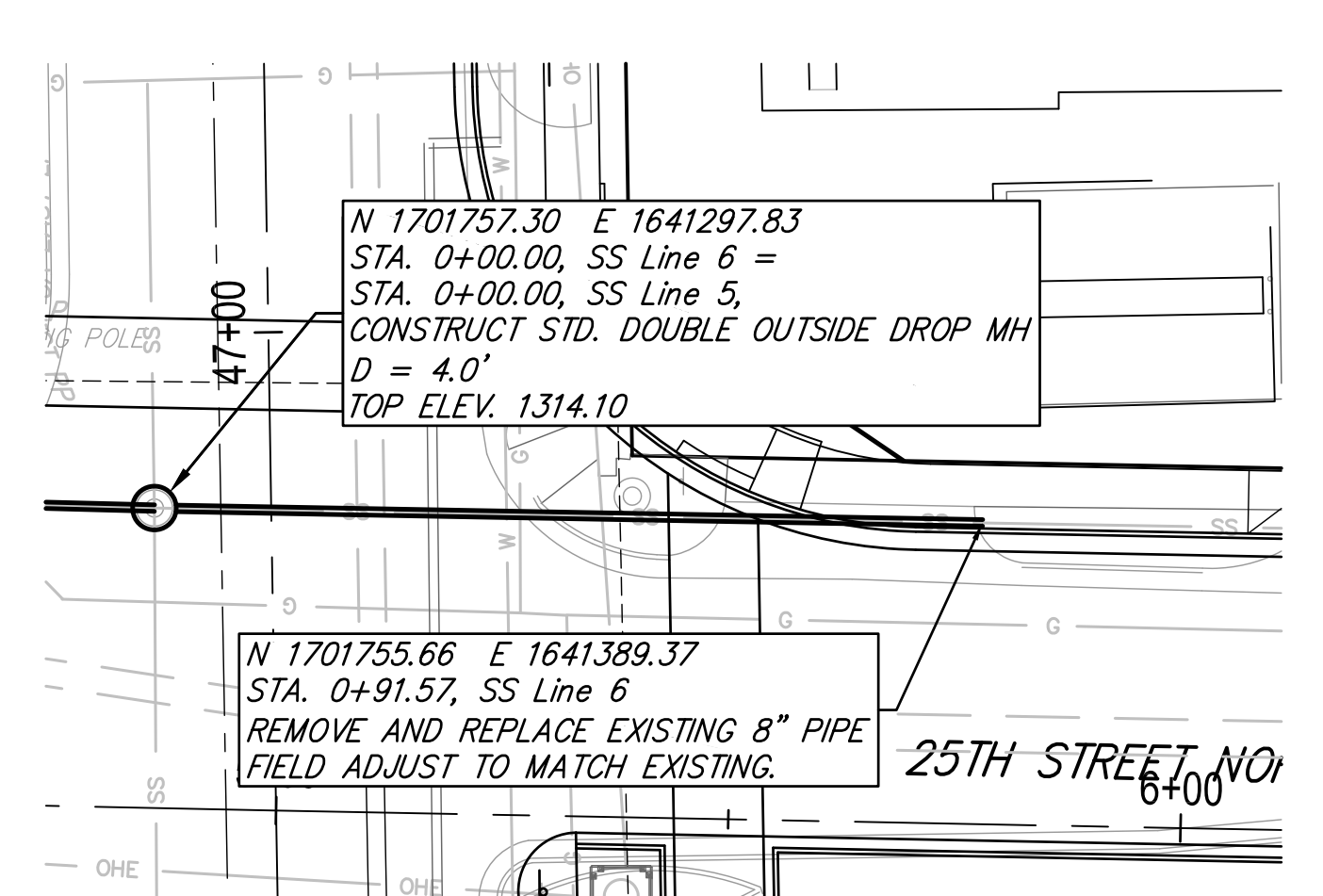
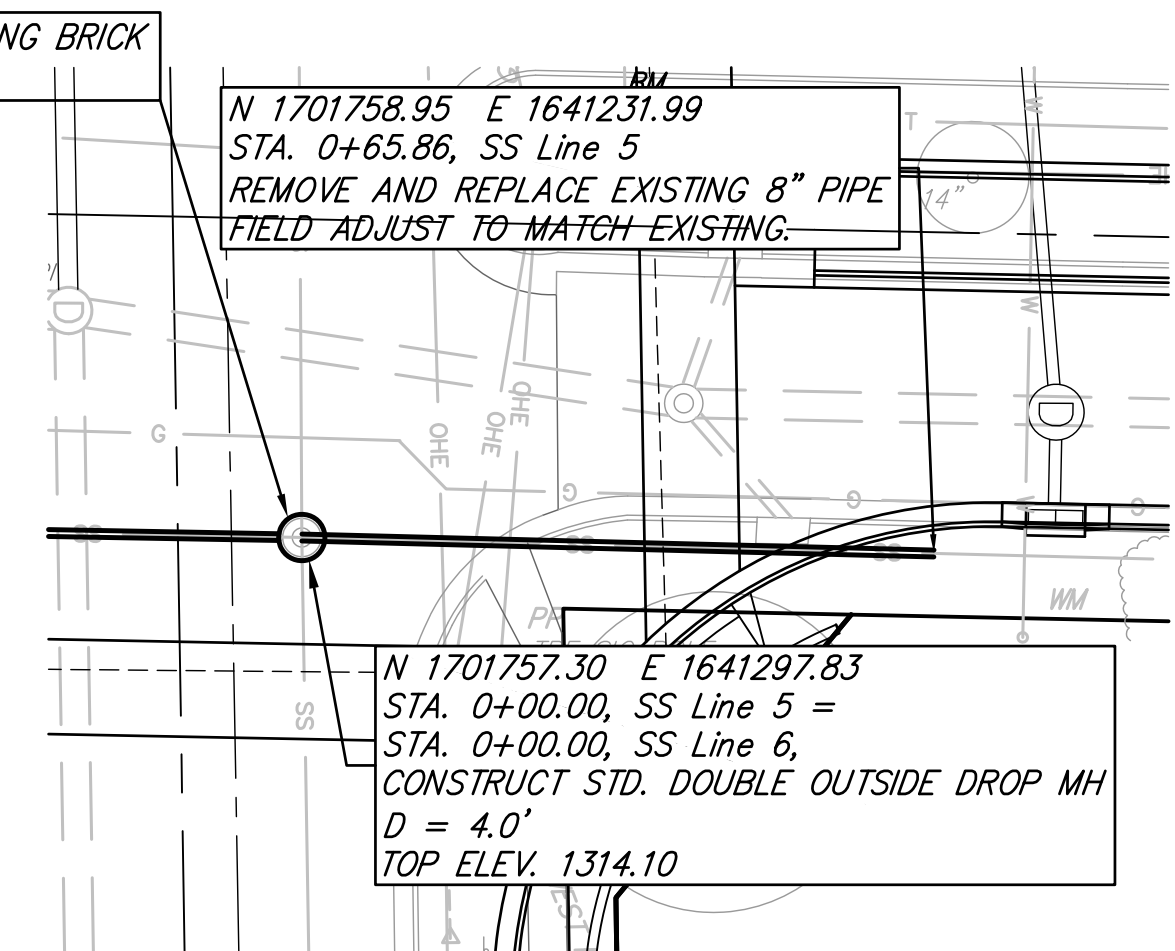
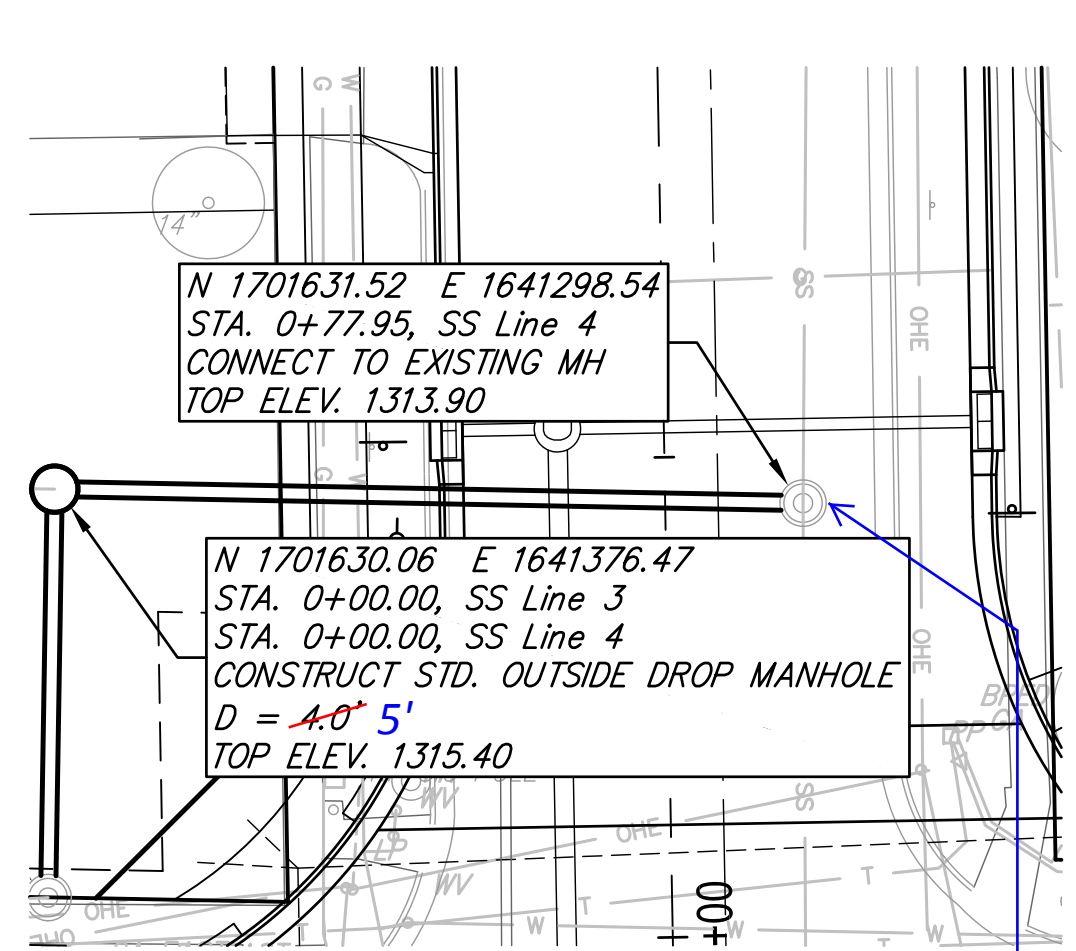
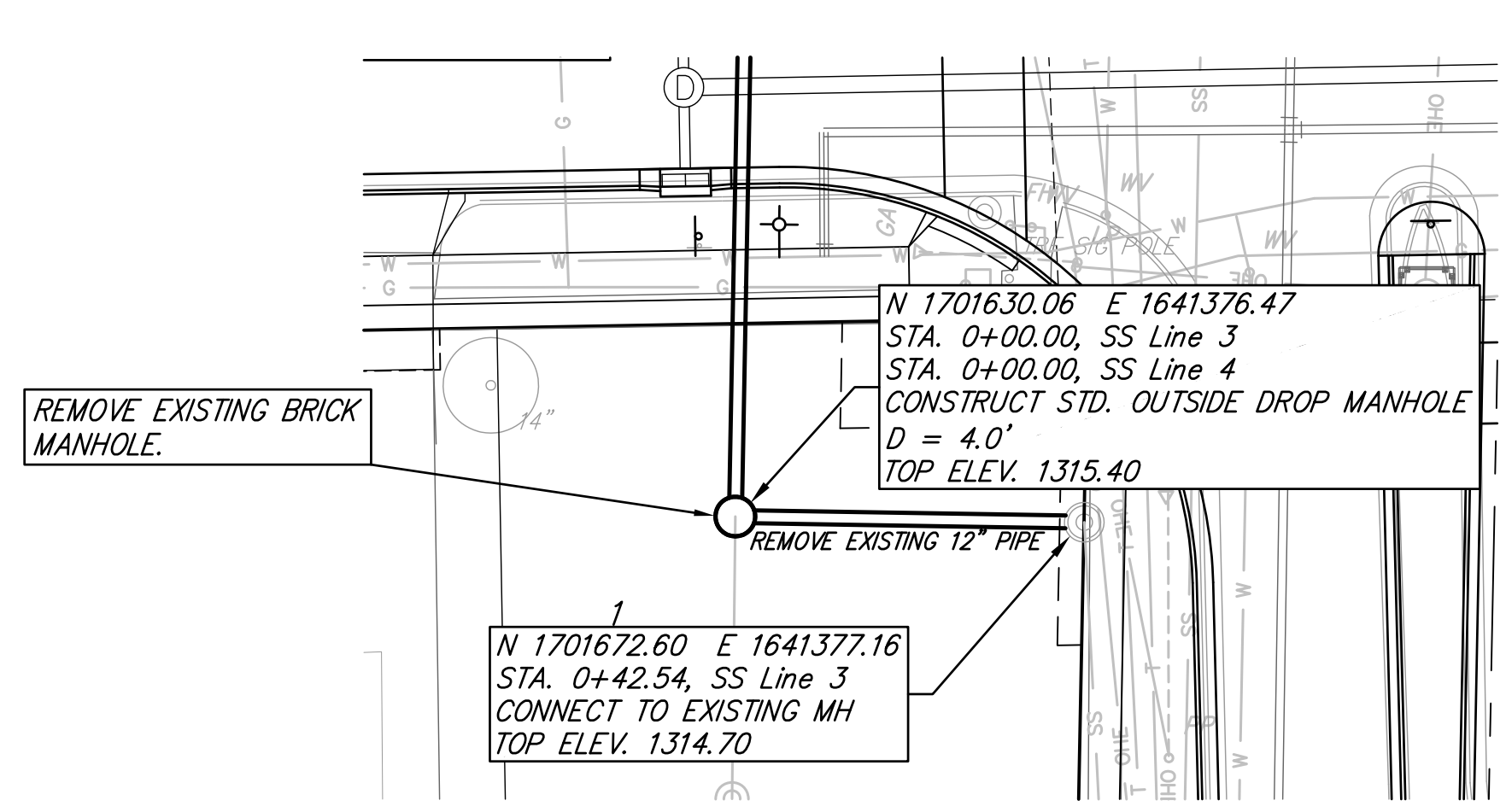


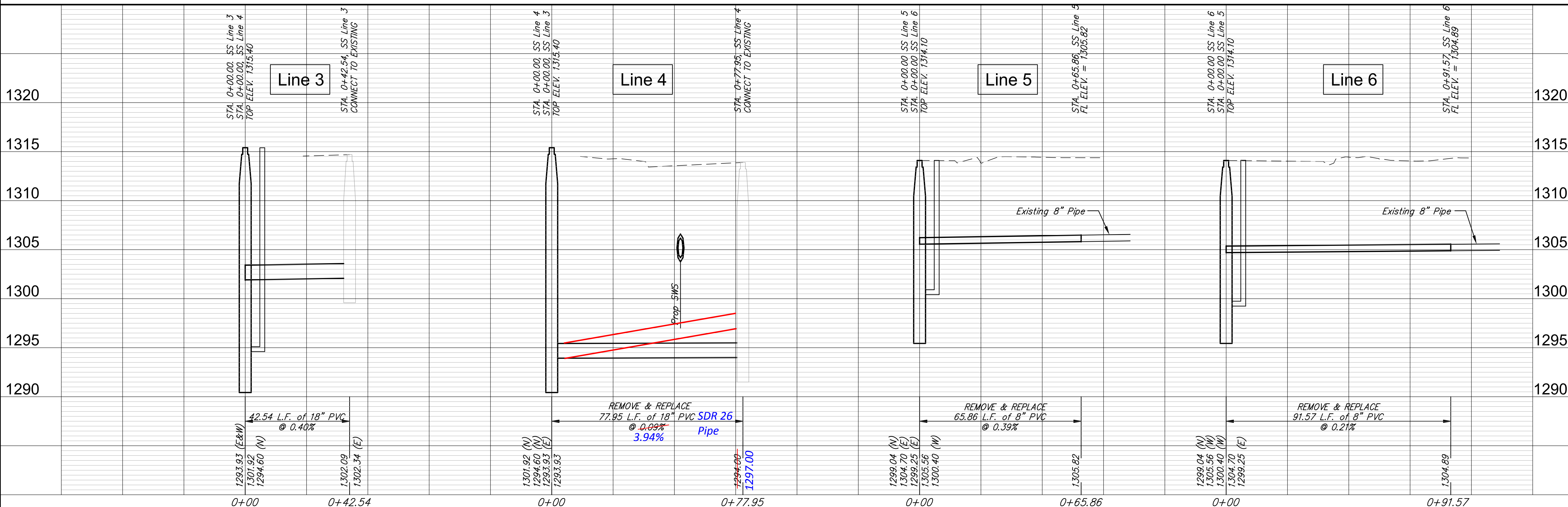
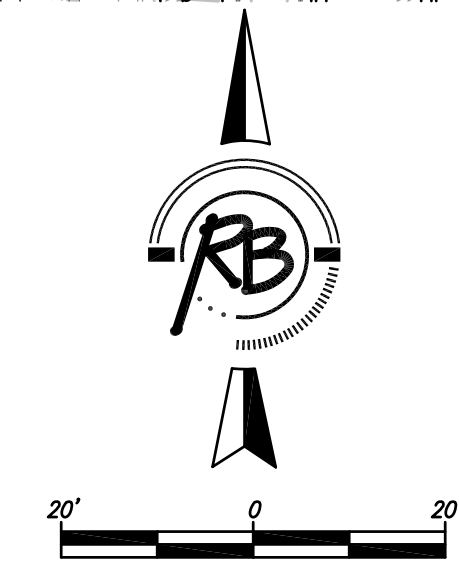
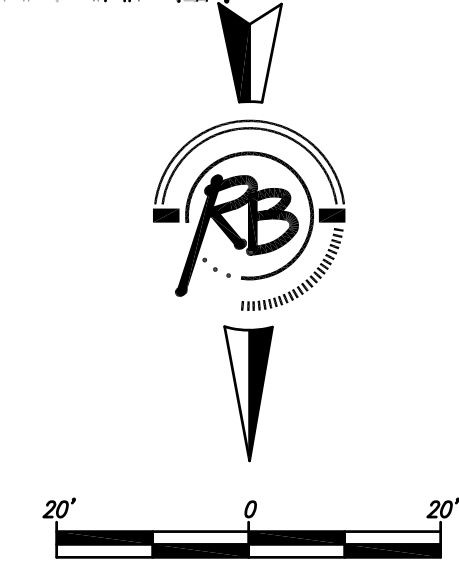
NOTE: CONTRACTOR SHALL BE RESPONSIBLE FOR CONVEYING EXISTING SEWER FLOWS DURING CONSTRUCTION. CONTRACTOR SHALL SUBMIT PUMPING PLAN TO FIELD ENGINEER FOR APPROVAL PRIOR TO BEGINNING CONSTRUCTION.

SAND BACKFILL, JETTED AND VIBRATED, IS REQUIRED FOR ALL PIPE CONSTRUCTED UNDER STREET PAVEMENT (195 LF)

Note: 40 lf of existing 18" SS encased in 25th St intersection.



Note: Flowline to the east raised 3' & bottom of mh filled with 3' invert. This eliminated the inside drop coming from the south.



RUGGLES BOHM
 ARCHITECTS, ENGINEERS, PLANNERS
 15373
 10/23/14
 KANSAS PROFESSIONAL ENGINEER
 KENNETH W. LEFF
 PROJECT NUMBER: 472-84914
 DESIGNER: KWL
 DRAWING FILE: SANITARY SEWER LINE 3, 4, 5 & 6
 DRAWN: DKZ
 REVIEW: ...
 DATE: Oct. 23, 2014
 AMIDON IMPROVEMENTS
 SANITARY SEWER LINE 3, 4, 5 & 6
 WICHITA, KANSAS
 RB JOB: 3647T
 SHEET: 45 OF 133