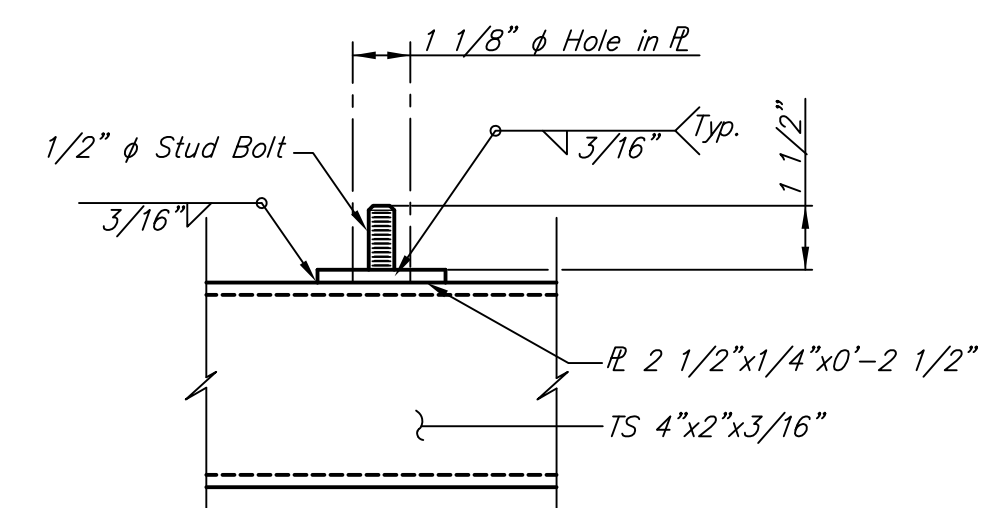
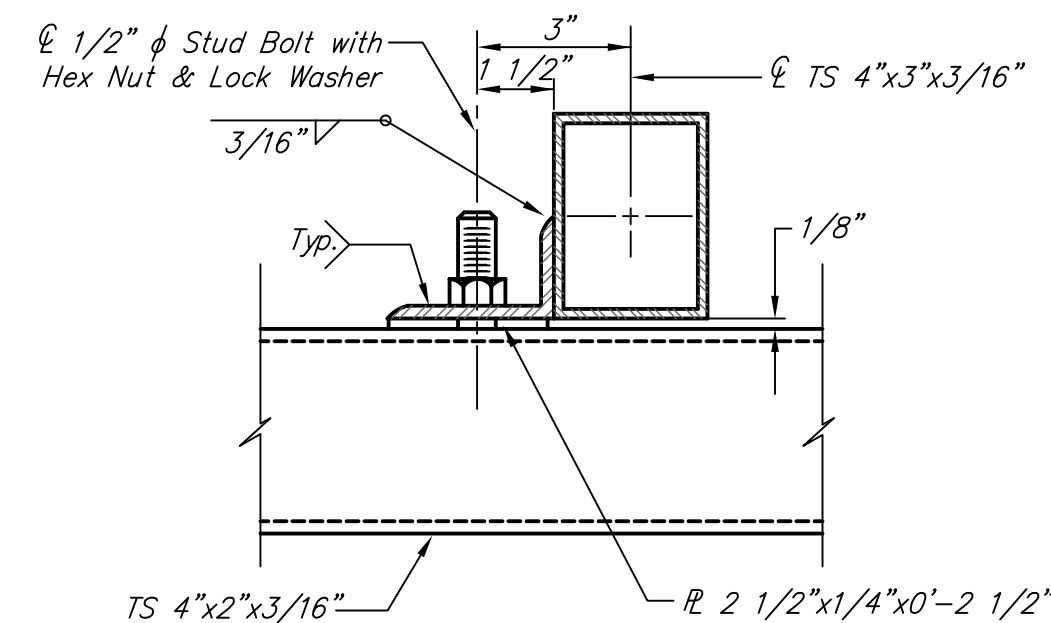
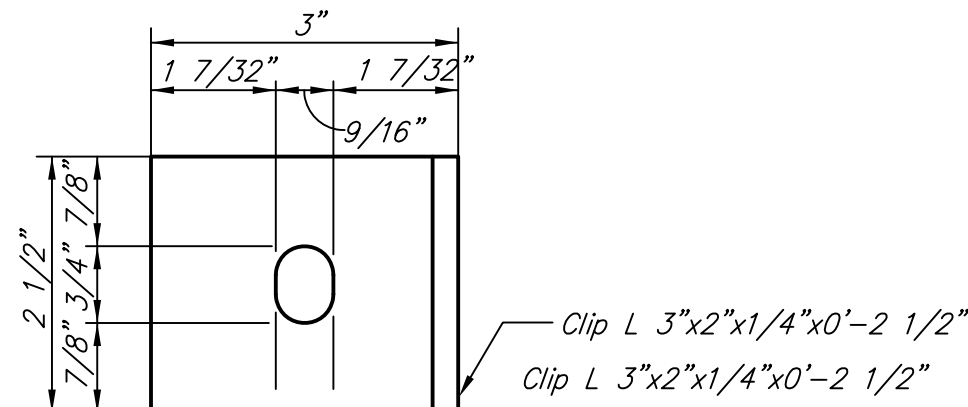
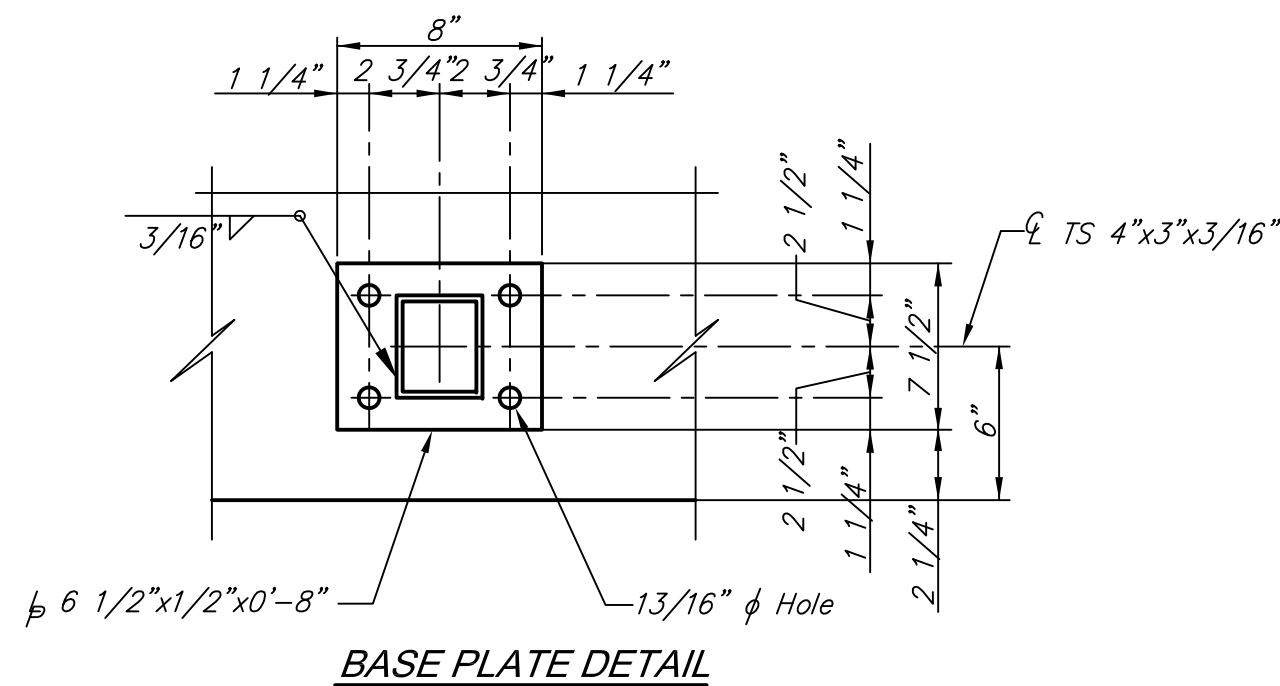


**SECTION A-A**



**PROTECTIVE RAIL NOTES:**

1. Handrail shall be field adjusted to clear existing base of pole.
2. Median concrete in area around pole shall be poured 10" thick. Extra thickness incidental to the bid item for "Protective Handrail".
3. Existing bollards, railing and guardrails shall be removed and not replaced. incidental to the bid item for "Site Clearing".
4. The rail members shall conform to ASTM Designation A36.
5. Protective Rail posts shall be set vertical. Shims may be used between concrete and base plates of posts.
6. All parts of Protective Rail shall be painted black. Shop and field coats shall conform to organic or inorganic Zinc for primer or equivalent. and "High-Build Polyurethane Finish Coat" at the Standard Specifications for State Road and Bridge Construction, 1990 Edition, Kansas Department of Transportation.
7. All materials, equipment and labor necessary for the installation of the Handrail on the bridge shall be subsidiary to the bid item for "Protective Rail".
8. Protective Rail shall be approved by Field Engineer prior to painting. Contractor to submit color chart to Field Engineer for approval. Touch Up: All bolts, nuts and studs and other small areas of damaged paint (10 S.F. or less) requiring touch up will be prepared and painted w/approved aluminum epoxy mastic primer.



AMIDON - 21ST TO 29TH STREET NORTH PROTECTIVE RAILING DETAILS WICHITA, KANSAS		DATE Oct. 23, 2014
		DESIGN KWL
ENGINEERING   SURVEYING   LANDSCAPE ARCHITECTURE   GOVERNMENT 924 NORTH MAIN WICHITA, KANSAS 67203 P (316) 264-8008 F (316) 264-4621 WWW.RBKANSAS.COM		DRAWN NSK
PROJECT NUMBER 472-84914	RB JOB NO. 3647T	DWG. SCALE 1"=10'
DRAWING FILE handrail details {Handrail Detail}		SHEET <b>50</b> OF 133