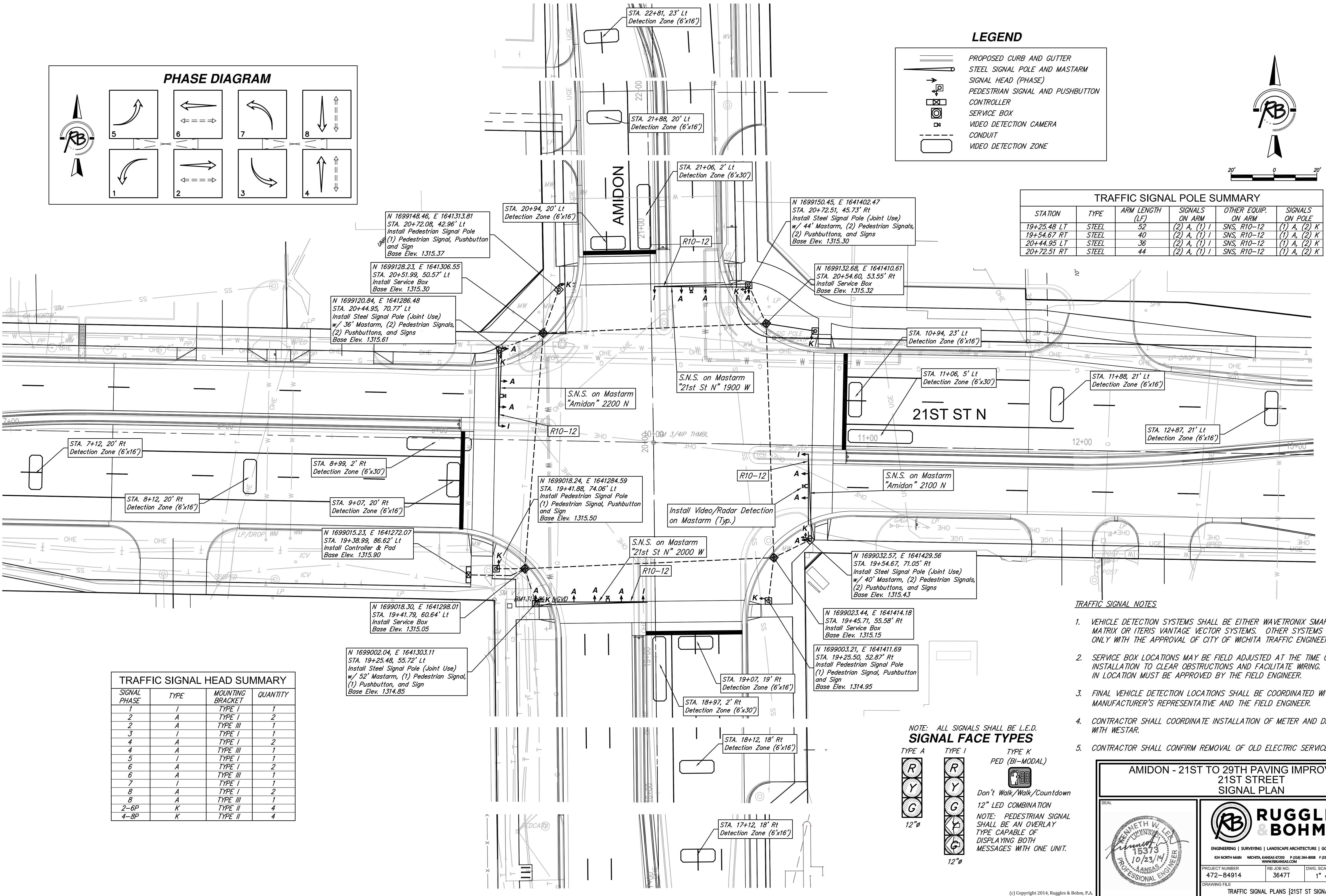


TRAFFIC SIGNAL POLE SUMMARY

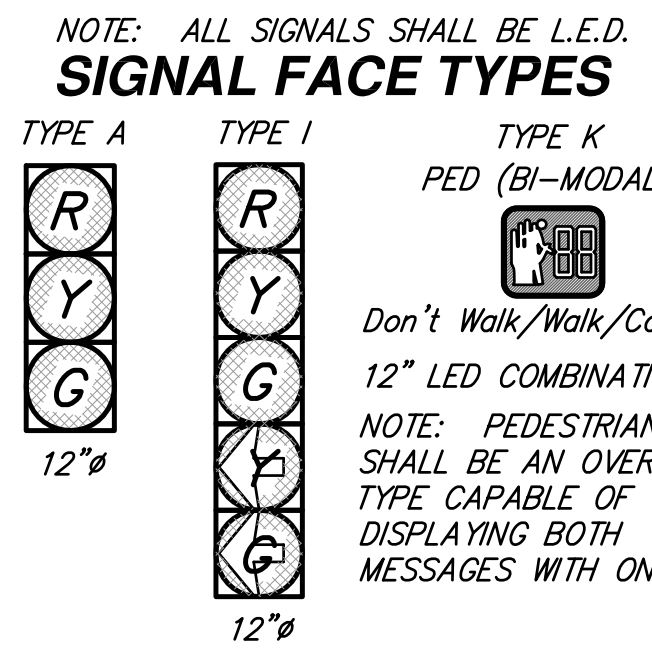
STATION	TYPE	ARM LENGTH (LF)	SIGNALS ON ARM	OTHER EQUIP. ON ARM	SIGNALS ON POLE
19+25.48 LT	STEEL	52	(2) A, (1) I	SNS, R10-12	(1) A, (2) K
19+54.67 RT	STEEL	40	(2) A, (1) I	SNS, R10-12	(1) A, (2) K
20+44.95 LT	STEEL	36	(2) A, (1) I	SNS, R10-12	(1) A, (2) K
20+72.51 RT	STEEL	44	(2) A, (1) I	SNS, R10-12	(1) A, (2) K



TRAFFIC SIGNAL HEAD SUMMARY

SIGNAL PHASE	TYPE	MOUNTING BRACKET	QUANTITY
1	I	TYPE I	1
2	A	TYPE I	2
2	A	TYPE III	1
3	I	TYPE I	1
4	A	TYPE I	2
4	A	TYPE III	1
5	I	TYPE I	1
6	A	TYPE I	2
6	A	TYPE III	1
7	I	TYPE I	1
8	A	TYPE I	2
8	A	TYPE III	1
2-6P	K	TYPE II	4
4-8P	K	TYPE II	4

- ### TRAFFIC SIGNAL NOTES
- VEHICLE DETECTION SYSTEMS SHALL BE EITHER WAVETRONIX SMARTSENSOR MATRIX OR ITERIS VANTAGE VECTOR SYSTEMS. OTHER SYSTEMS MAY BE USED ONLY WITH THE APPROVAL OF CITY OF WICHITA TRAFFIC ENGINEERING.
 - SERVICE BOX LOCATIONS MAY BE FIELD ADJUSTED AT THE TIME OF INSTALLATION TO CLEAR OBSTRUCTIONS AND FACILITATE WIRING. ANY CHANGE IN LOCATION MUST BE APPROVED BY THE FIELD ENGINEER.
 - FINAL VEHICLE DETECTION LOCATIONS SHALL BE COORDINATED WITH THE MANUFACTURER'S REPRESENTATIVE AND THE FIELD ENGINEER.
 - CONTRACTOR SHALL COORDINATE INSTALLATION OF METER AND DISCONNECT WITH WESTAR.
 - CONTRACTOR SHALL CONFIRM REMOVAL OF OLD ELECTRIC SERVICE.



AMIDON - 21ST TO 29TH PAVING IMPROVEMENTS

21ST STREET SIGNAL PLAN

RUGGLES & BOHM

ENGINEERING | SURVEYING | LANDSCAPE ARCHITECTURE | GOVERNMENT

924 NORTH MAIN WICHITA, KANSAS 67203 P (316) 264-8008 F (316) 264-4621 WWW.RBKANSAS.COM

DATE: Oct. 22, 2014

DESIGN: KWL

DRAWN: KWL

REVIEW:

PROJECT NUMBER: 472-84914

DRAWING FILE:

RB JOB NO.: 3647T

DWG. SCALE: 1" = 10'

SHEET: 66 OF 133

TRAFFIC SIGNAL PLANS [21ST ST SIGNAL]