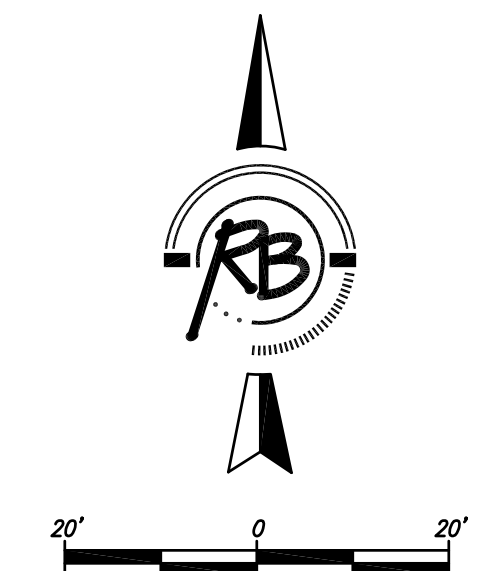
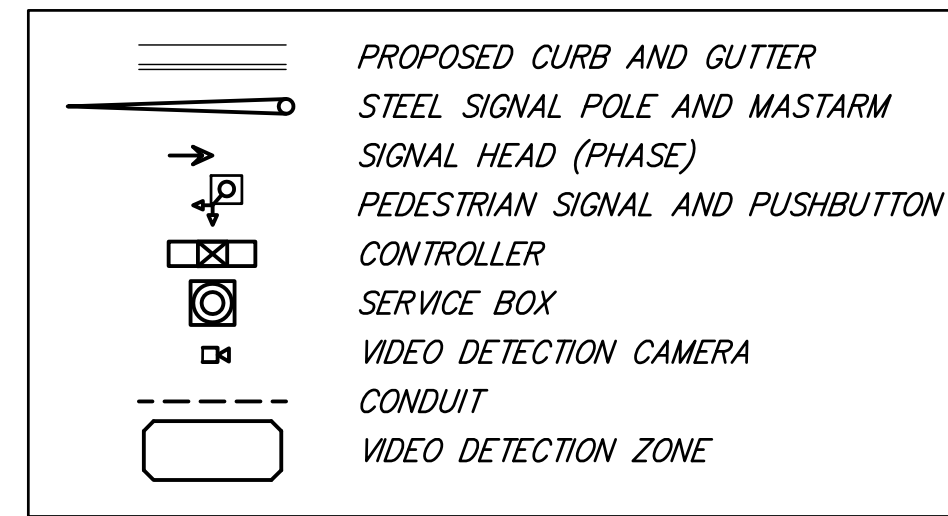
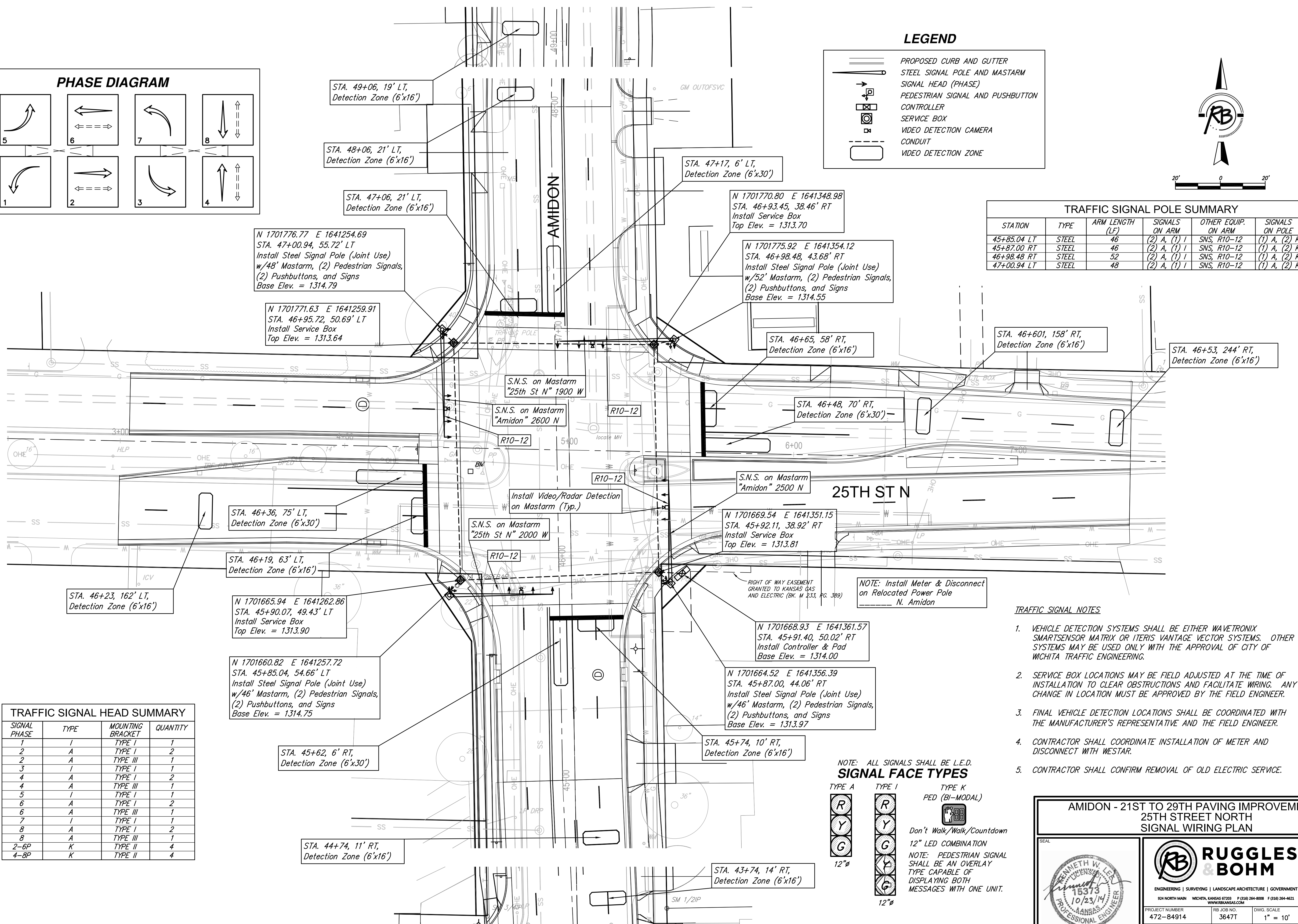


### LEGEND



### TRAFFIC SIGNAL POLE SUMMARY

STATION	TYPE	ARM LENGTH (LF)	SIGNALS ON ARM	OTHER EQUIP. ON ARM	SIGNALS ON POLE
45+85.04 LT	STEEL	46	(2) A, (1) I	SNS, R10-12	(1) A, (2) K
45+87.00 RT	STEEL	46	(2) A, (1) I	SNS, R10-12	(1) A, (2) K
46+98.48 RT	STEEL	52	(2) A, (1) I	SNS, R10-12	(1) A, (2) K
47+00.94 LT	STEEL	48	(2) A, (1) I	SNS, R10-12	(1) A, (2) K

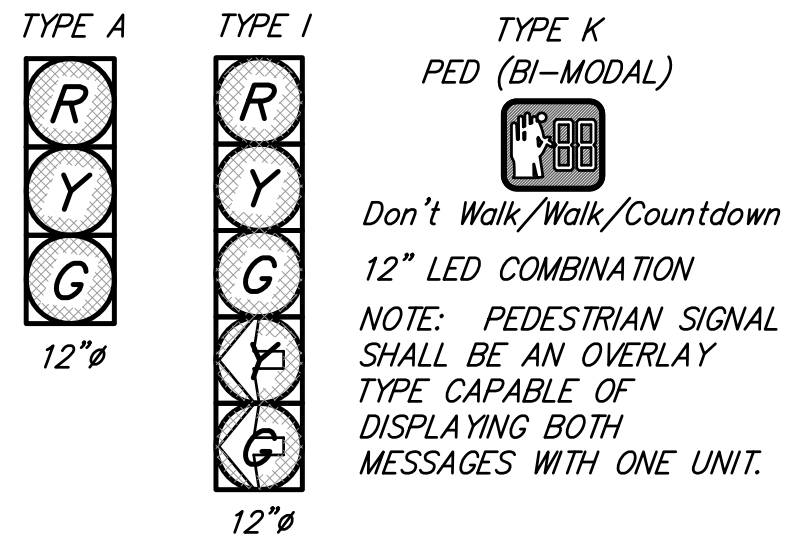


### TRAFFIC SIGNAL HEAD SUMMARY

SIGNAL PHASE	TYPE	MOUNTING BRACKET	QUANTITY
1	I	TYPE I	1
2	A	TYPE I	2
2	A	TYPE III	1
3	I	TYPE I	1
4	A	TYPE I	2
4	A	TYPE III	1
5	I	TYPE I	1
6	A	TYPE I	2
6	A	TYPE III	1
7	I	TYPE I	1
8	A	TYPE I	2
8	A	TYPE III	1
2-6P	K	TYPE II	4
4-8P	K	TYPE II	4

- ### TRAFFIC SIGNAL NOTES
- VEHICLE DETECTION SYSTEMS SHALL BE EITHER WAVETRONIX SMARTSENSOR MATRIX OR ITERIS VANTAGE VECTOR SYSTEMS. OTHER SYSTEMS MAY BE USED ONLY WITH THE APPROVAL OF CITY OF WICHITA TRAFFIC ENGINEERING.
  - SERVICE BOX LOCATIONS MAY BE FIELD ADJUSTED AT THE TIME OF INSTALLATION TO CLEAR OBSTRUCTIONS AND FACILITATE WIRING. ANY CHANGE IN LOCATION MUST BE APPROVED BY THE FIELD ENGINEER.
  - FINAL VEHICLE DETECTION LOCATIONS SHALL BE COORDINATED WITH THE MANUFACTURER'S REPRESENTATIVE AND THE FIELD ENGINEER.
  - CONTRACTOR SHALL COORDINATE INSTALLATION OF METER AND DISCONNECT WITH WESTAR.
  - CONTRACTOR SHALL CONFIRM REMOVAL OF OLD ELECTRIC SERVICE.

### NOTE: ALL SIGNALS SHALL BE L.E.D. SIGNAL FACE TYPES



#### AMIDON - 21ST TO 29TH PAVING IMPROVEMENTS

#### 25TH STREET NORTH

#### SIGNAL WIRING PLAN

**RUGGLES & BOHM**

ENGINEERING | SURVEYING | LANDSCAPE ARCHITECTURE | GOVERNMENT

924 NORTH MAIN WICHITA, KANSAS 67203 P (316) 264-8008 F (316) 264-4621 WWW.RBKANSAS.COM

DATE: Oct. 22, 2014

DESIGN: KWL

DRAWN: KWL

REVIEW:

PROJECT NUMBER: 472-84914

DRAWING FILE:

RB JOB NO.: 3647T

DWG. SCALE: 1" = 10'

SHEET: 70

OF 133

TRAFFIC SIGNAL PLANS [25TH ST SIGNAL]