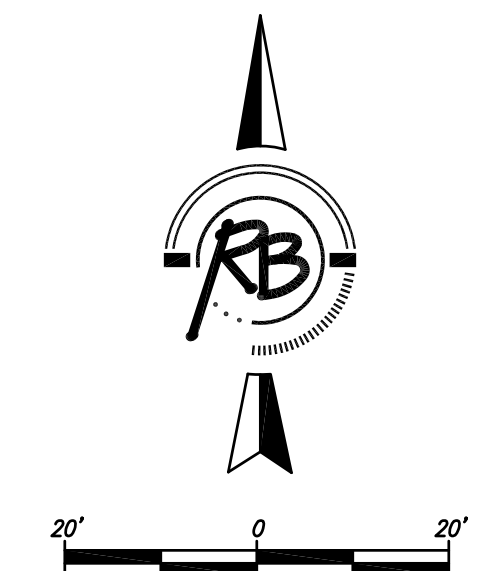
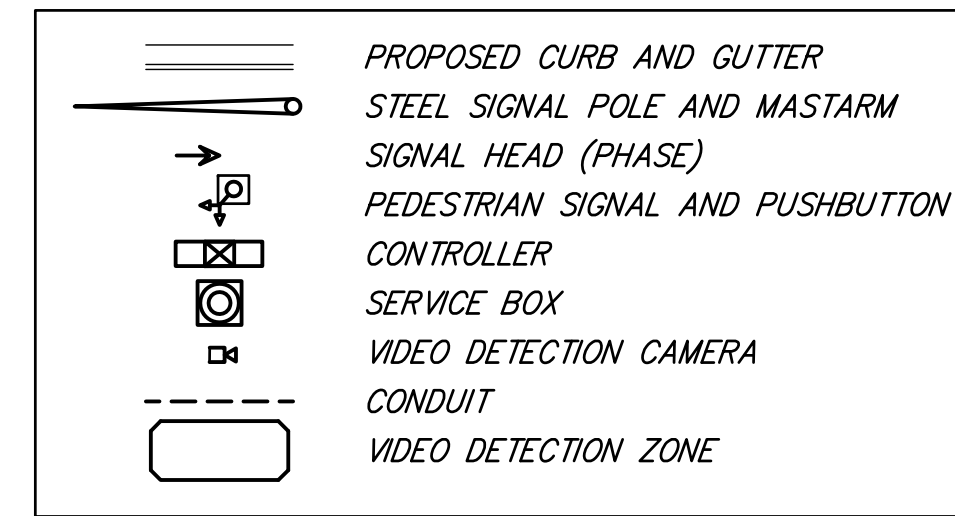
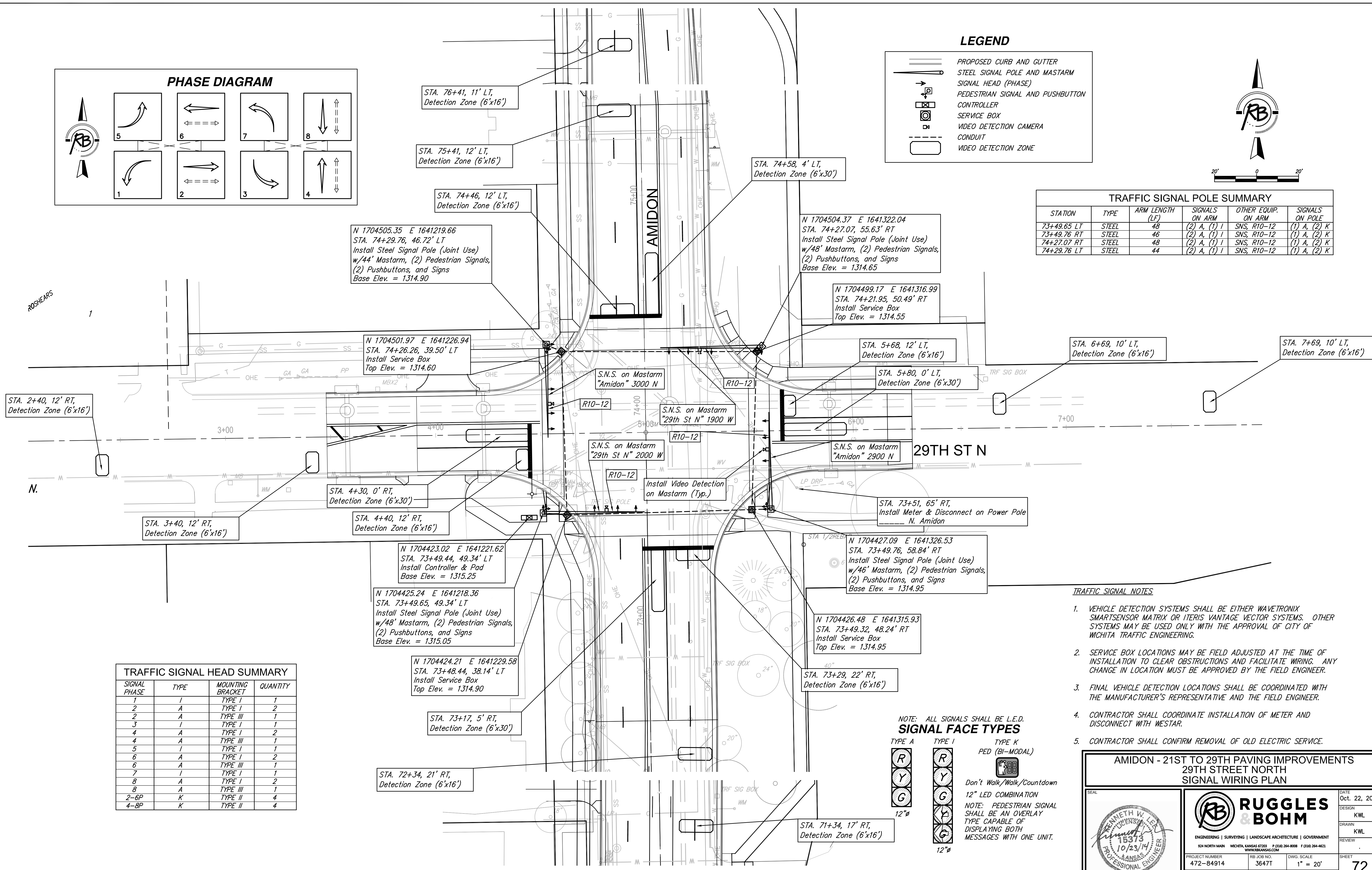


LEGEND



TRAFFIC SIGNAL POLE SUMMARY

STATION	TYPE	ARM LENGTH (LF)	SIGNALS ON ARM	OTHER EQUIP. ON ARM	SIGNALS ON POLE
73+49.65 LT	STEEL	48	(2) A, (1) I	SNS, R10-12	(1) A, (2) K
73+49.76 RT	STEEL	46	(2) A, (1) I	SNS, R10-12	(1) A, (2) K
74+27.07 RT	STEEL	48	(2) A, (1) I	SNS, R10-12	(1) A, (2) K
74+29.76 LT	STEEL	44	(2) A, (1) I	SNS, R10-12	(1) A, (2) K



N 1704505.35 E 1641219.66
 STA. 74+29.76, 46.72' LT
 Install Steel Signal Pole (Joint Use)
 w/44' Mastarm, (2) Pedestrian Signals,
 (2) Pushbuttons, and Signs
 Base Elev. = 1314.90

N 1704504.37 E 1641322.04
 STA. 74+27.07, 55.63' RT
 Install Steel Signal Pole (Joint Use)
 w/48' Mastarm, (2) Pedestrian Signals,
 (2) Pushbuttons, and Signs
 Base Elev. = 1314.65

N 1704499.17 E 1641316.99
 STA. 74+21.95, 50.49' RT
 Install Service Box
 Top Elev. = 1314.55

N 1704501.97 E 1641226.94
 STA. 74+26.26, 39.50' LT
 Install Service Box
 Top Elev. = 1314.60

STA. 5+68, 12' LT,
 Detection Zone (6'x16')

STA. 6+69, 10' LT,
 Detection Zone (6'x16')

STA. 7+69, 10' LT,
 Detection Zone (6'x16')

STA. 2+40, 12' RT,
 Detection Zone (6'x16')

STA. 3+40, 12' RT,
 Detection Zone (6'x16')

STA. 4+30, 0' RT,
 Detection Zone (6'x30')

STA. 4+40, 12' RT,
 Detection Zone (6'x16')

S.N.S. on Mastarm
 "Amidon" 3000 N

S.N.S. on Mastarm
 "29th St N" 1900 W

S.N.S. on Mastarm
 "29th St N" 2000 W

S.N.S. on Mastarm
 "Amidon" 2900 N

Install Video Detection
 on Mastarm (Typ.)

STA. 73+51, 65' RT,
 Install Meter & Disconnect on Power Pole
 N. Amidon

N 1704423.02 E 1641221.62
 STA. 73+49.44, 49.34' LT
 Install Controller & Pad
 Base Elev. = 1315.25

N 1704425.24 E 1641218.36
 STA. 73+49.65, 49.34' LT
 Install Steel Signal Pole (Joint Use)
 w/48' Mastarm, (2) Pedestrian Signals,
 (2) Pushbuttons, and Signs
 Base Elev. = 1315.05

N 1704427.09 E 1641326.53
 STA. 73+49.76, 58.84' RT
 Install Steel Signal Pole (Joint Use)
 w/46' Mastarm, (2) Pedestrian Signals,
 (2) Pushbuttons, and Signs
 Base Elev. = 1314.95

N 1704426.48 E 1641315.93
 STA. 73+49.32, 48.24' RT
 Install Service Box
 Top Elev. = 1314.95

N 1704424.21 E 1641229.58
 STA. 73+48.44, 38.14' LT
 Install Service Box
 Top Elev. = 1314.90

STA. 73+17, 5' RT,
 Detection Zone (6'x30')

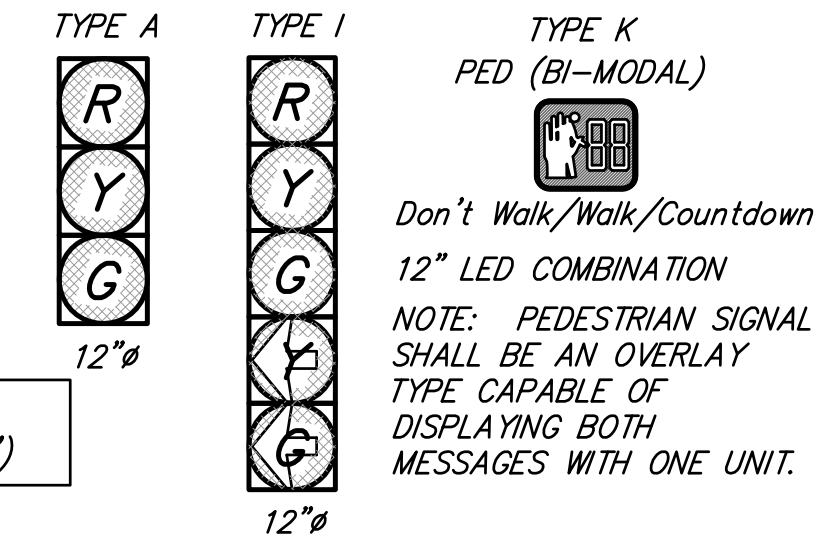
STA. 72+34, 21' RT,
 Detection Zone (6'x16')

STA. 71+34, 17' RT,
 Detection Zone (6'x16')

TRAFFIC SIGNAL NOTES

1. VEHICLE DETECTION SYSTEMS SHALL BE EITHER WAVETRONIX SMARTSENSOR MATRIX OR ITERIS VANTAGE VECTOR SYSTEMS. OTHER SYSTEMS MAY BE USED ONLY WITH THE APPROVAL OF CITY OF WICHITA TRAFFIC ENGINEERING.
2. SERVICE BOX LOCATIONS MAY BE FIELD ADJUSTED AT THE TIME OF INSTALLATION TO CLEAR OBSTRUCTIONS AND FACILITATE WIRING. ANY CHANGE IN LOCATION MUST BE APPROVED BY THE FIELD ENGINEER.
3. FINAL VEHICLE DETECTION LOCATIONS SHALL BE COORDINATED WITH THE MANUFACTURER'S REPRESENTATIVE AND THE FIELD ENGINEER.
4. CONTRACTOR SHALL COORDINATE INSTALLATION OF METER AND DISCONNECT WITH WESTAR.
5. CONTRACTOR SHALL CONFIRM REMOVAL OF OLD ELECTRIC SERVICE.

NOTE: ALL SIGNALS SHALL BE L.E.D. SIGNAL FACE TYPES



Don't Walk/Walk/Countdown
 12" LED COMBINATION
 NOTE: PEDESTRIAN SIGNAL SHALL BE AN OVERLAY TYPE CAPABLE OF DISPLAYING BOTH MESSAGES WITH ONE UNIT.

TRAFFIC SIGNAL HEAD SUMMARY

SIGNAL PHASE	TYPE	MOUNTING BRACKET	QUANTITY
1	I	TYPE I	1
2	A	TYPE I	2
2	A	TYPE III	1
3	I	TYPE I	1
4	A	TYPE I	2
4	A	TYPE III	1
5	I	TYPE I	1
6	A	TYPE I	2
6	A	TYPE III	1
7	I	TYPE I	1
8	A	TYPE I	2
8	A	TYPE III	1
2-6P	K	TYPE II	4
4-8P	K	TYPE II	4

AMIDON - 21ST TO 29TH PAVING IMPROVEMENTS
29TH STREET NORTH
SIGNAL WIRING PLAN

RUGGLES & BOHM
 ENGINEERING | SURVEYING | LANDSCAPE ARCHITECTURE | GOVERNMENT
 924 NORTH MAIN WICHITA, KANSAS 67203 P (316) 264-8008 F (316) 264-4621
 WWW.RBKANSAS.COM

DATE: Oct. 22, 2014
 DESIGN: KWL
 DRAWN: KWL
 REVIEW: .
 SHEET: **72**
 OF 133

PROJECT NUMBER: 472-84914

RB JOB NO.: 3647T

DWG. SCALE: 1" = 20'

DRAWING FILE: TRAFFIC SIGNAL PLANS [29TH ST SIGNAL]