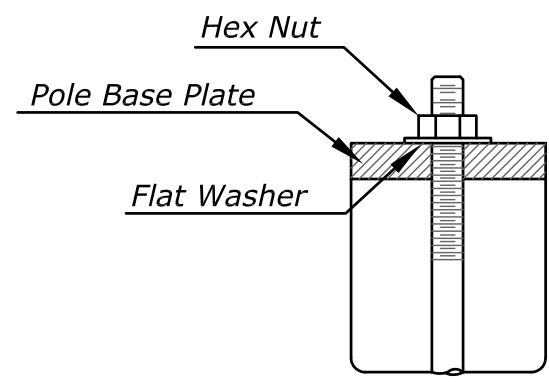
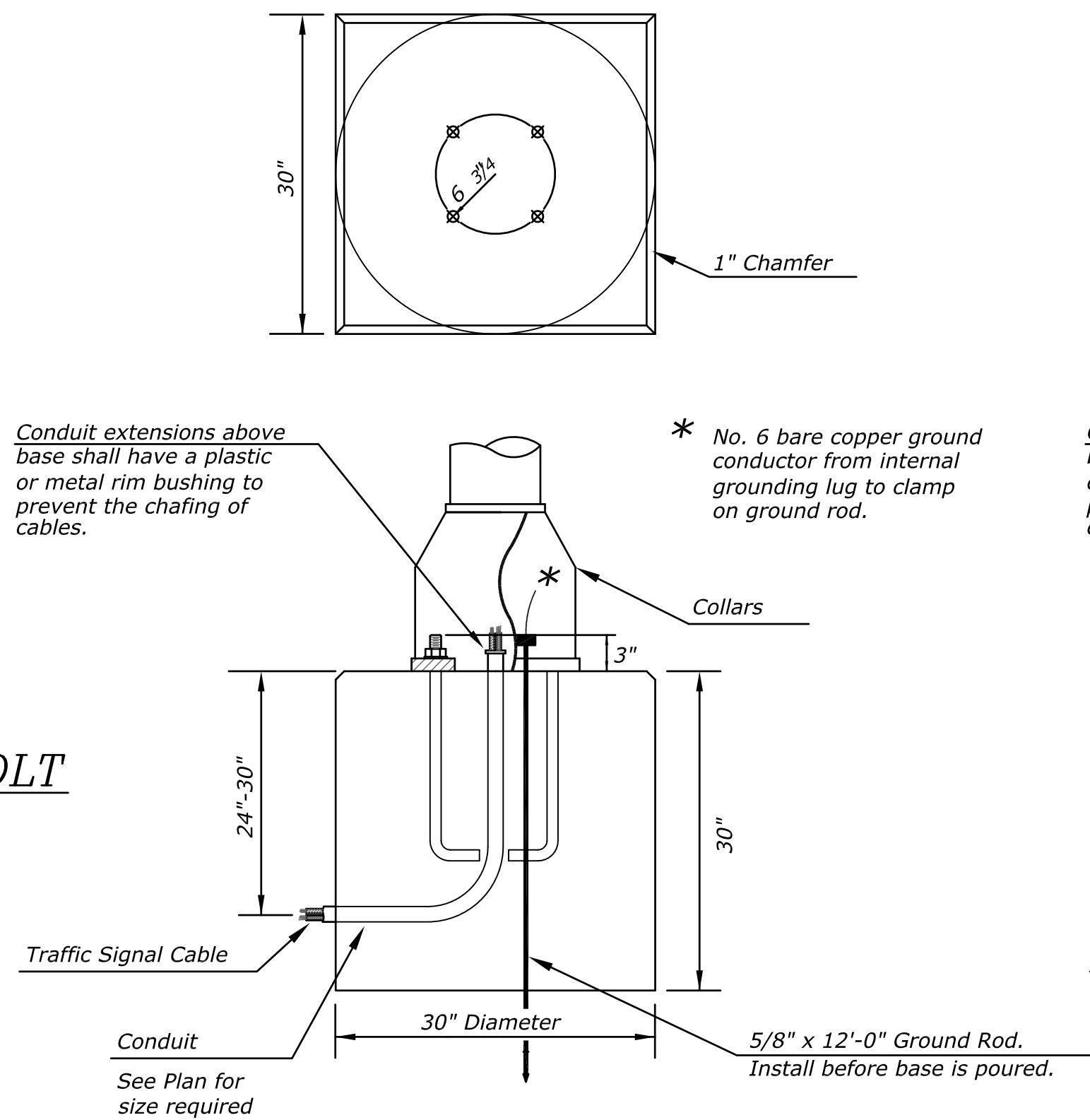


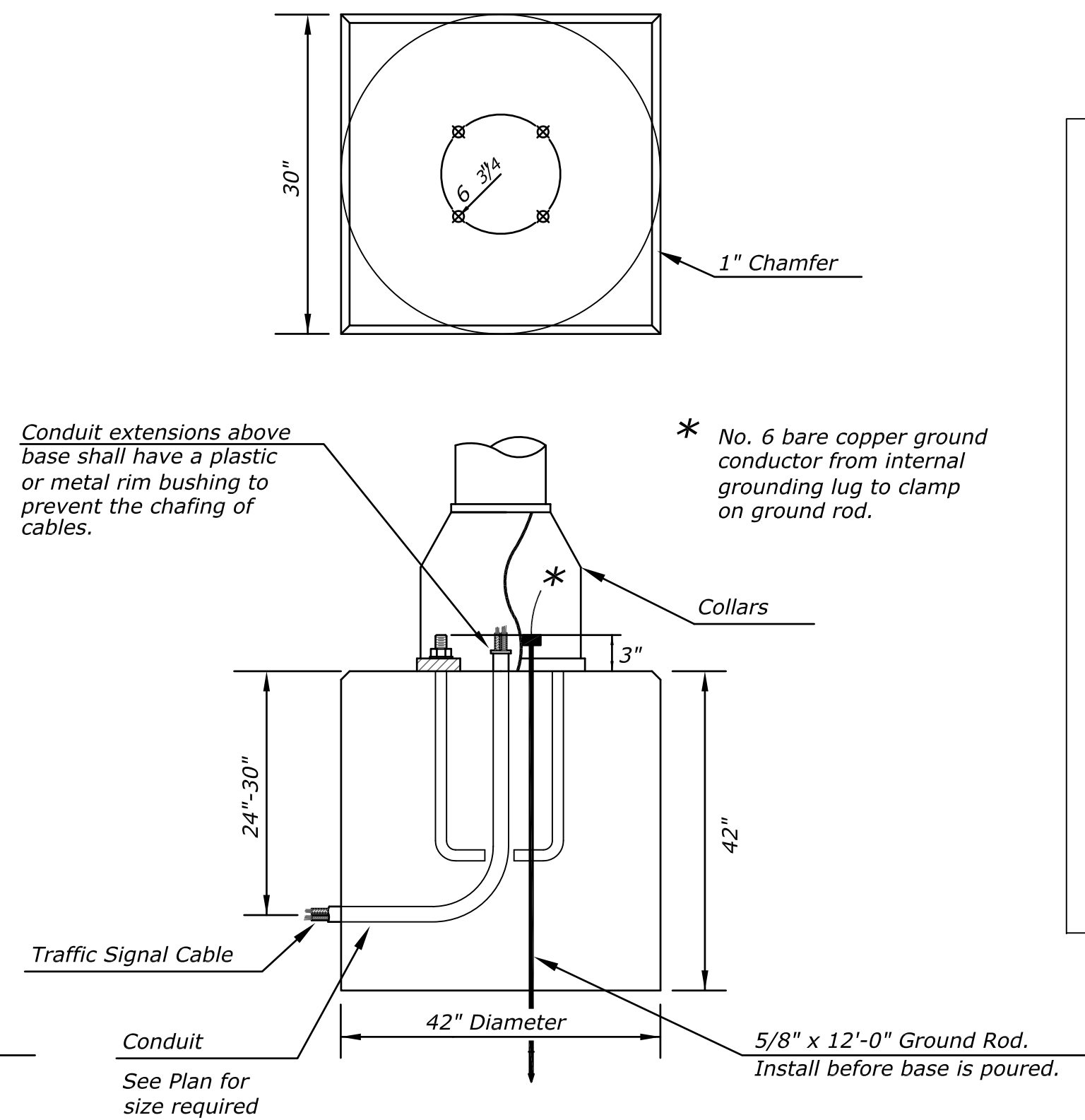
Use Keystone "No-Weld Number 1 Anti-Seize Compound" on all bolts & nuts.



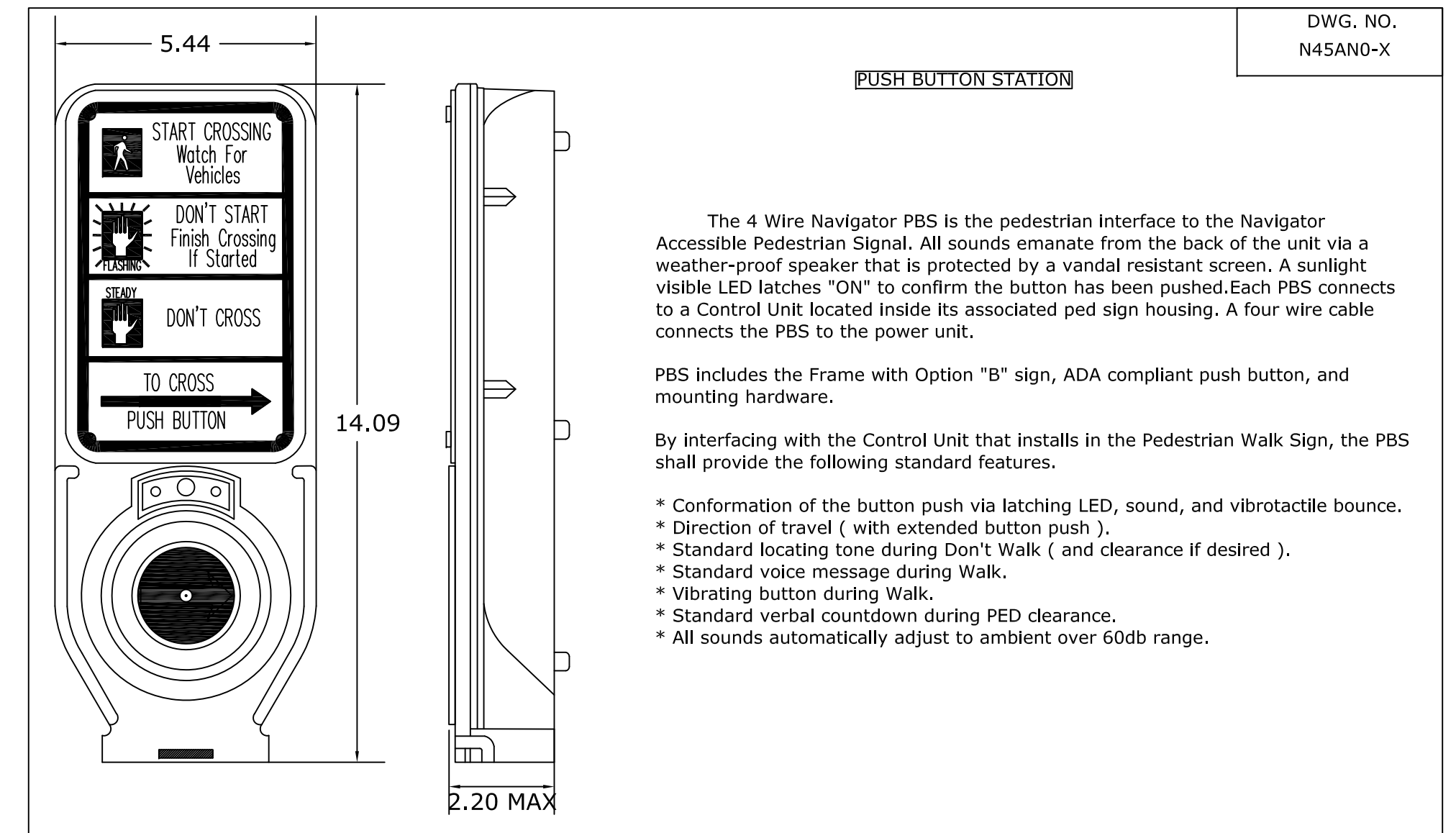
**ANCHOR BOLT
DETAIL**



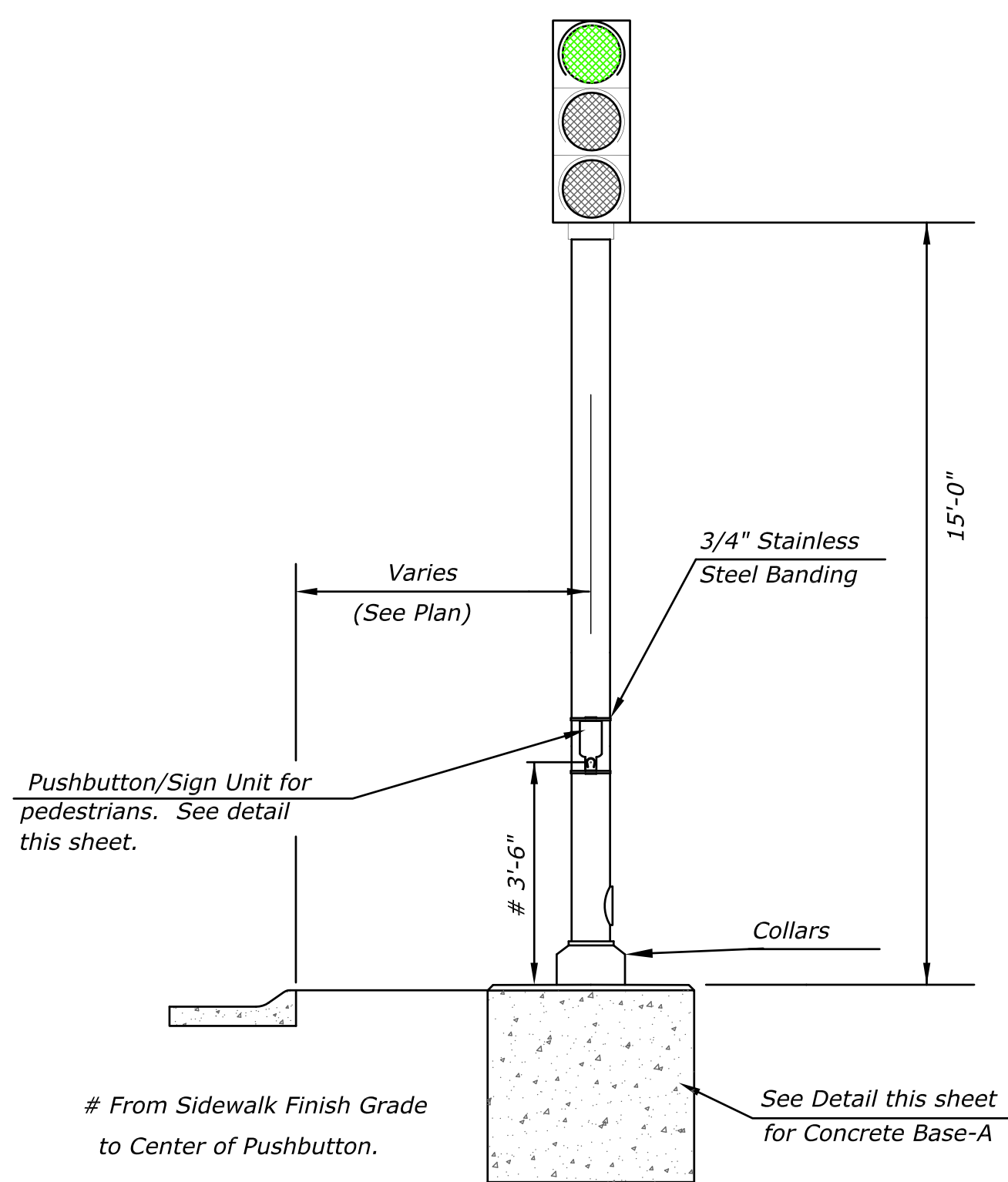
CONCRETE BASE-A DETAIL



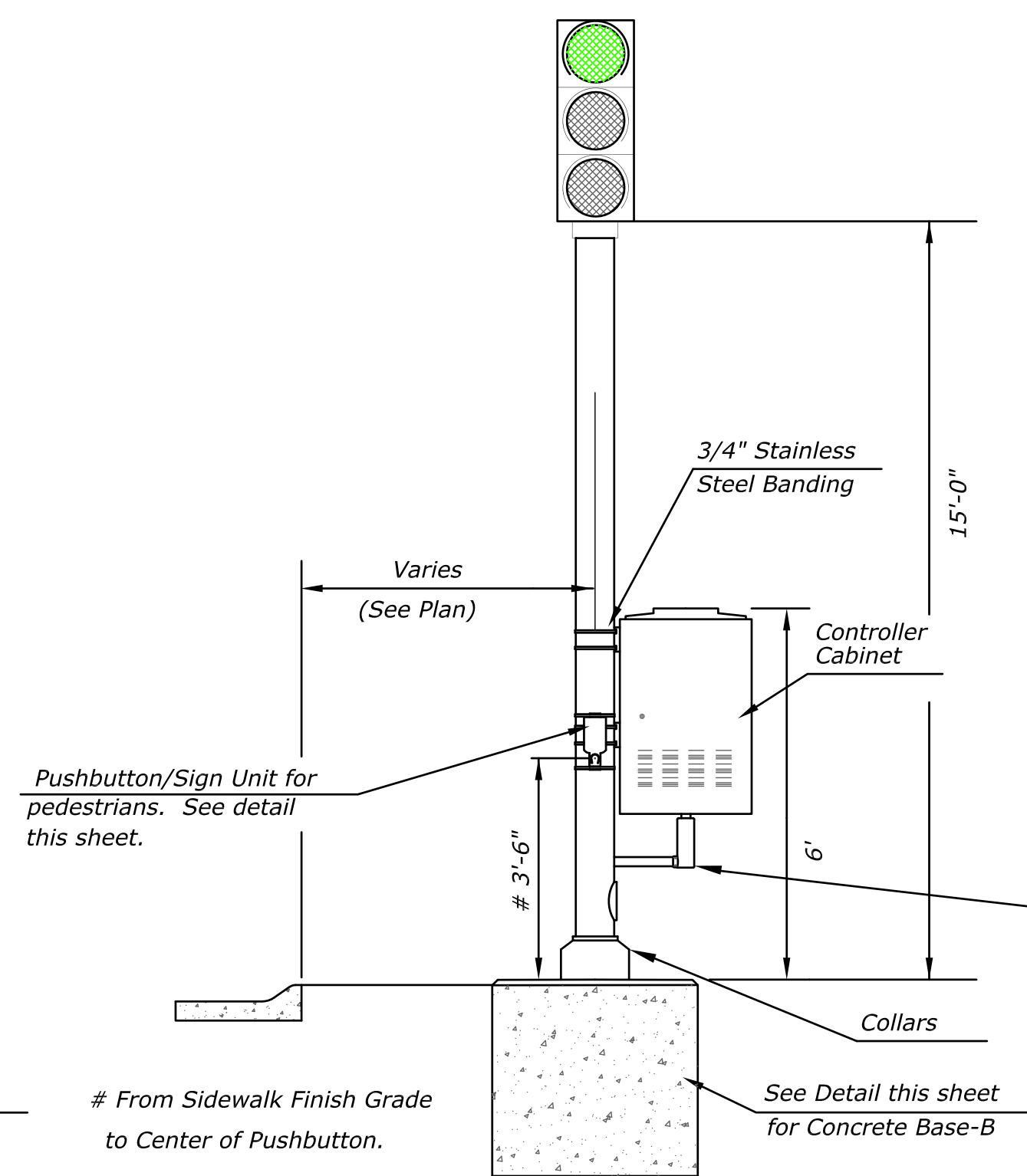
**CONCRETE BASE-B DETAIL FOR
TRAFFIC SIGNAL PEDESTAL
WITH CONTROLLER CABINET**



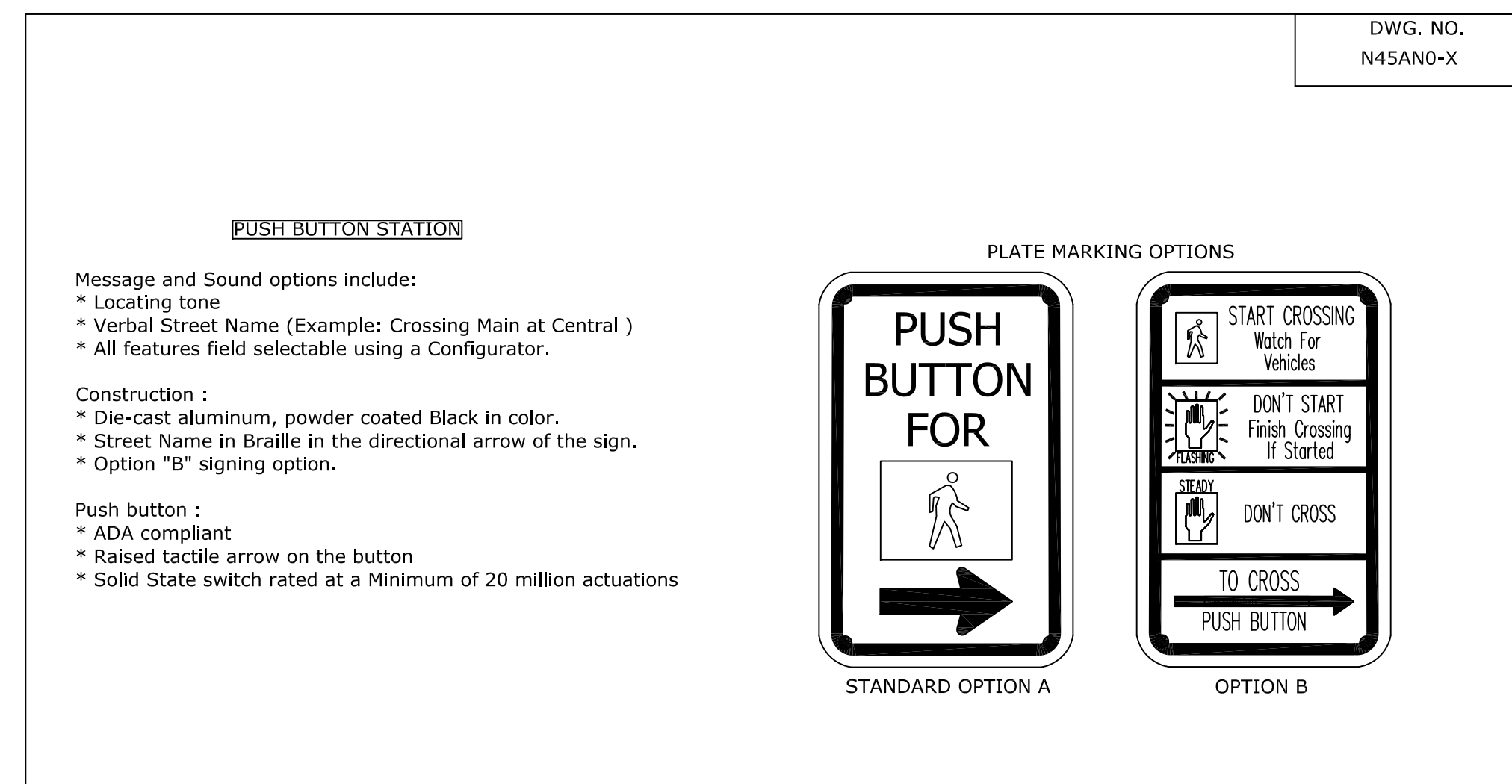
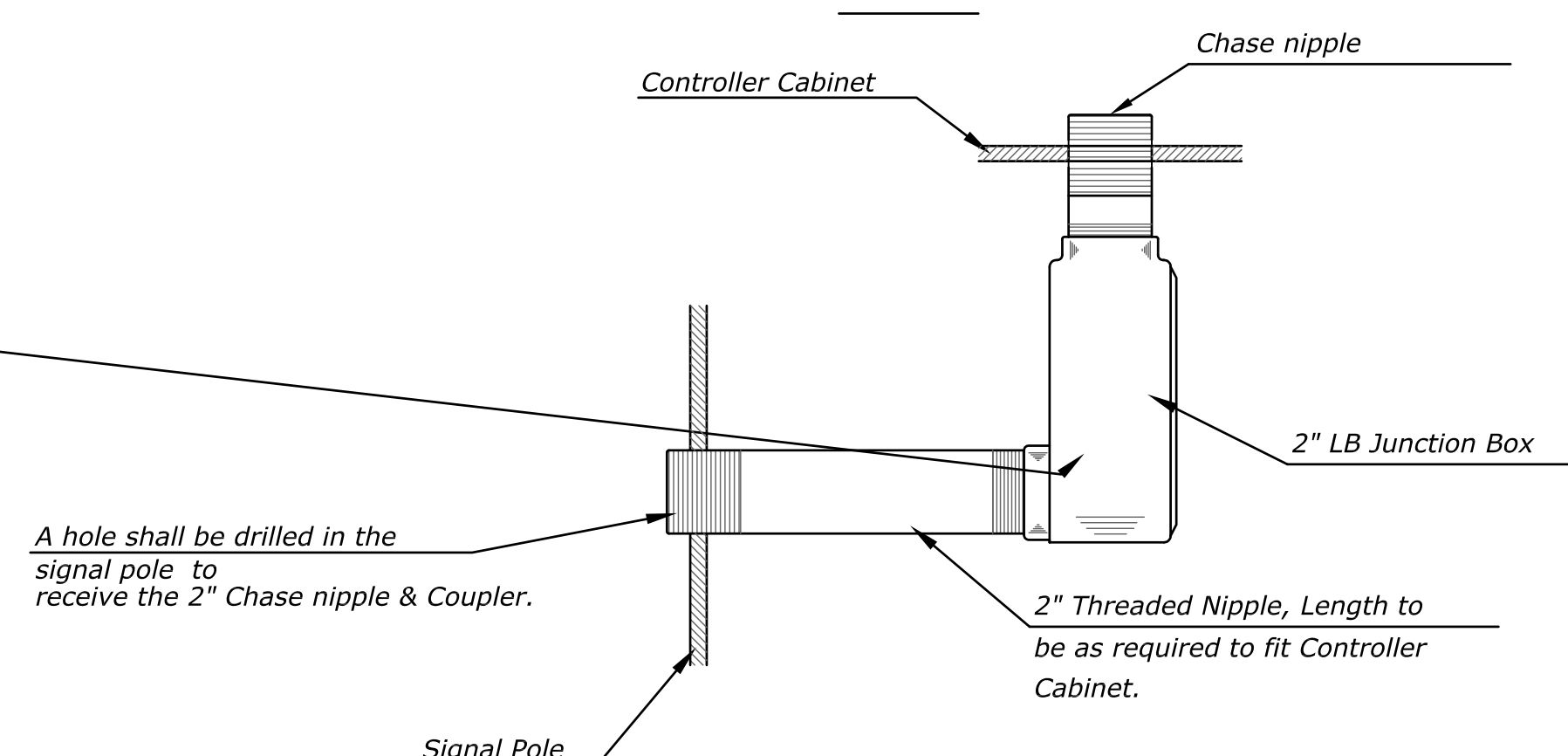
**PEDESTRIAN PUSHBUTTON/SIGN
UNIT DETAIL**



TRAFFIC SIGNAL PEDESTAL



**TRAFFIC SIGNAL PEDESTAL
WITH CONTROLLER CABINET**



CITY OF WICHITA
PUBLIC WORKS & UTILITIES
ENGINEERING DIVISION

SIGNAL PEDESTAL & BASE WITH ADA PUSH BUTTON		
TRAFFIC ENGINEER BRIAN A. COON P.E.		
PROJECT NUMBER 472-84914	OCA NUMBER 707023	DATE
CITY ENGINEER'S OFFICE CITY HALL - SEVENTH FLOOR 455 NORTH MAIN STREET WICHITA, KANSAS 67202-1620 (316) 268-4501		SHEET 77 OF 133