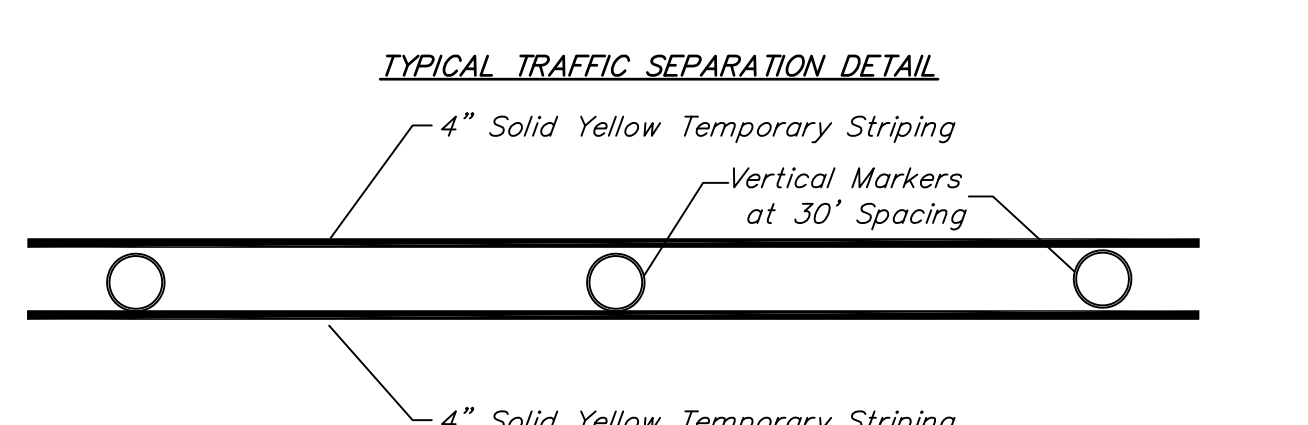
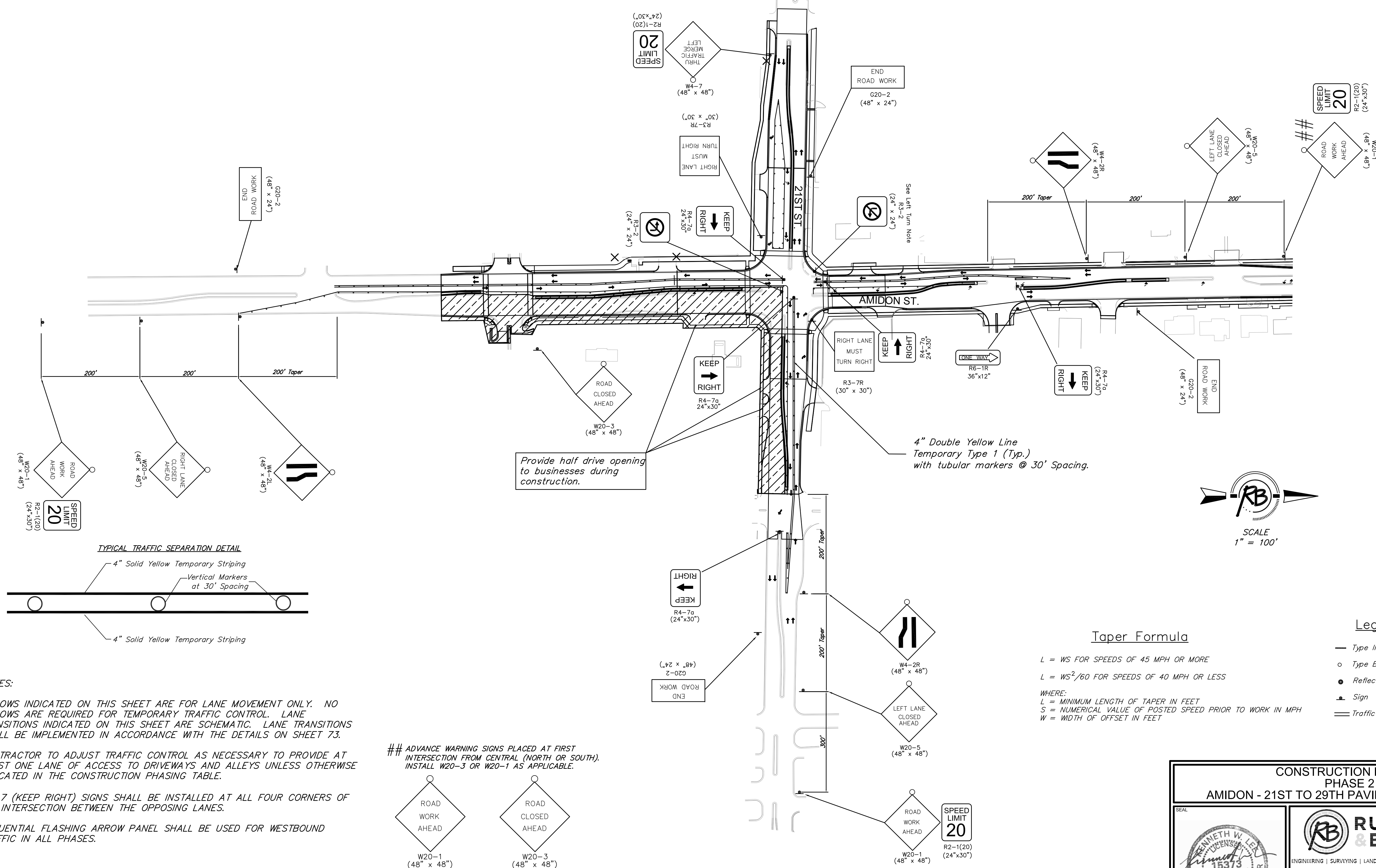


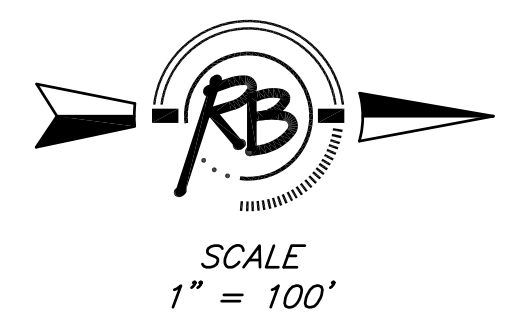
"NO LEFT TURN" NOTE:

R3-2 (NO LEFT TURN) SIGNS SHALL BE MOUNTED ON MAST ARMS BETWEEN SIGNAL HEADS WHEN POSSIBLE. IF MAST ARM MOUNTING IS NOT POSSIBLE, SIGNS SHALL BE INSTALLED ON FAR LEFT CORNERS FOR ALL DIRECTIONS AND FOR ALL PHASES.



Provide half drive opening to businesses during construction.

4" Double Yellow Line Temporary Type 1 (Typ.) with tubular markers @ 30' Spacing.



Taper Formula

$L = WS$ FOR SPEEDS OF 45 MPH OR MORE

$L = WS^2/60$ FOR SPEEDS OF 40 MPH OR LESS

WHERE:
 L = MINIMUM LENGTH OF TAPER IN FEET
 S = NUMERICAL VALUE OF POSTED SPEED PRIOR TO WORK IN MPH
 W = WIDTH OF OFFSET IN FEET

Legend

- Type III Barricade
- o Type B Warning Light
- Reflective Drums
- ▲ Sign
- ▬ Traffic Flow

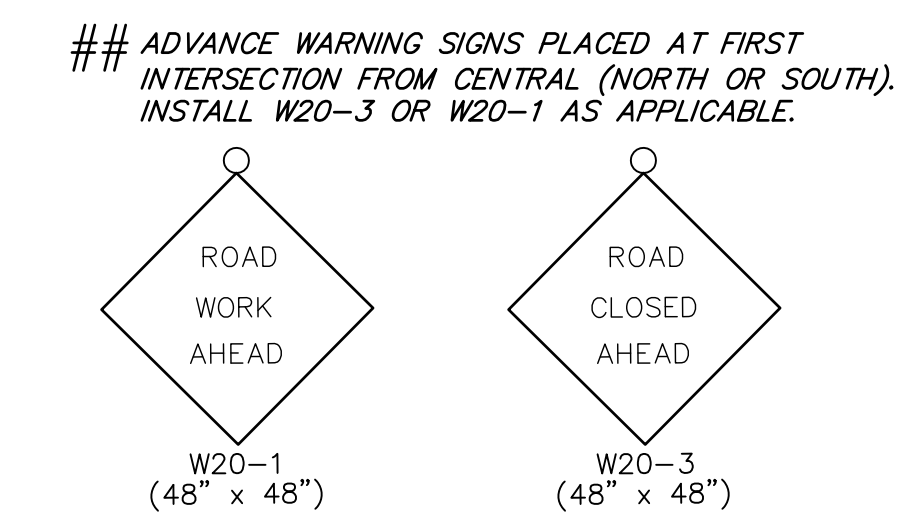
NOTES:

ARROWS INDICATED ON THIS SHEET ARE FOR LANE MOVEMENT ONLY. NO ARROWS ARE REQUIRED FOR TEMPORARY TRAFFIC CONTROL. LANE TRANSITIONS INDICATED ON THIS SHEET ARE SCHEMATIC. LANE TRANSITIONS SHALL BE IMPLEMENTED IN ACCORDANCE WITH THE DETAILS ON SHEET 73.

CONTRACTOR TO ADJUST TRAFFIC CONTROL AS NECESSARY TO PROVIDE AT LEAST ONE LANE OF ACCESS TO DRIVEWAYS AND ALLEYS UNLESS OTHERWISE INDICATED IN THE CONSTRUCTION PHASING TABLE.

R4-7 (KEEP RIGHT) SIGNS SHALL BE INSTALLED AT ALL FOUR CORNERS OF THE INTERSECTION BETWEEN THE OPPOSING LANES.

SEQUENTIAL FLASHING ARROW PANEL SHALL BE USED FOR WESTBOUND TRAFFIC IN ALL PHASES.



CONSTRUCTION PHASING PHASE 2 AMIDON - 21ST TO 29TH PAVING IMPROVEMENTS			
			DATE Oct. 23, 2014
	ENGINEERING SURVEYING LANDSCAPE ARCHITECTURE GOVERNMENT 924 NORTH MAIN WICHITA, KANSAS 67208 P (316) 264-8008 F (316) 264-4621 WWW.RB&B.COM		DESIGN KWL
PROJECT NUMBER 472-84914	RB JOB NO. 36471	DWG. SCALE 100	DRAWN NK/DGZ
DRAWING FILE Construction Phasing [phase 2]			REVIEW SHEET 91 OF 133