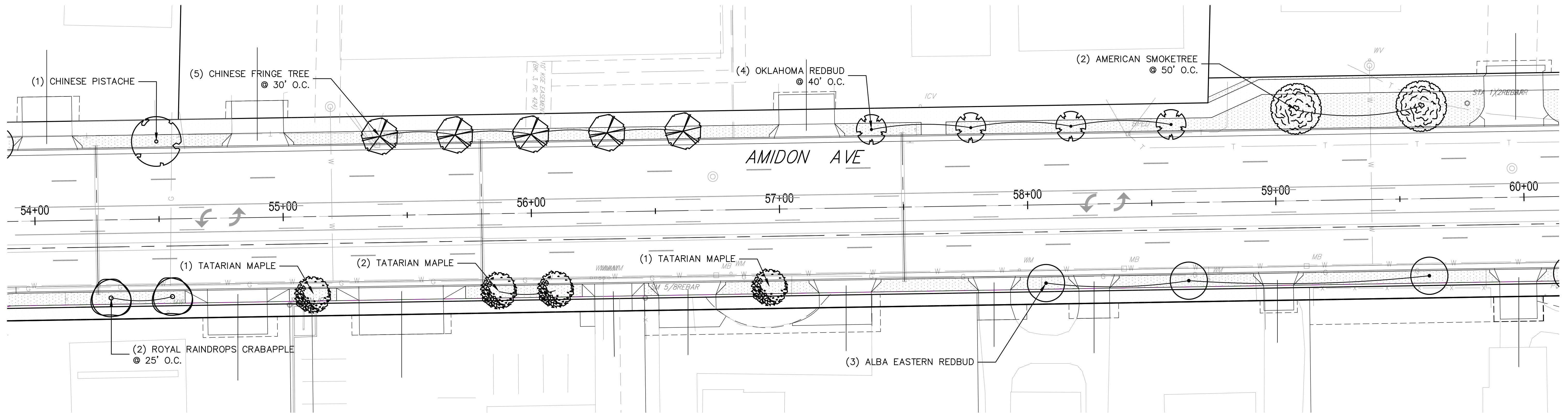
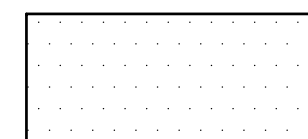


AMIDON - 48+00 to 54+00

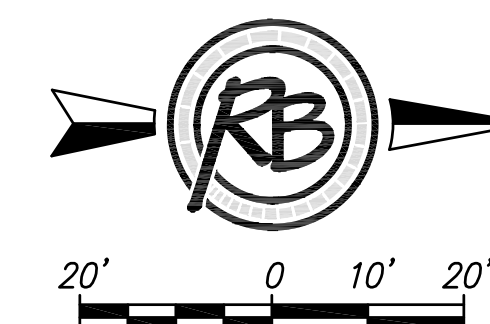


AMIDON - 54+00 to 60+00

LEGEND



BERMUDA OR FESCUE SOD
Per Notes on Sheet 112 and
City of Wichita Specifications Section 900



(c) Copyright 2014, Ruggles & Bohm, P.A.

<p>AMIDON - 21ST TO 29TH LANDSCAPE IMPROVEMENTS AMIDON - 48+00 to 60+00 WICHITA, KANSAS</p>			
			<p>DATE October, 2014</p>
	<p>ENGINEERING SURVEYING LANDSCAPE ARCHITECTURE GOVERNMENT</p>		<p>DESIGN DK</p>
	<p>524 NORTH MAIN WICHITA, KANSAS 67203 P (316) 264-9008 F (316) 264-4821 WWW.RUGGLESANDBOHM.COM</p>		<p>DRAWN DK</p>
	<p>PROJECT NUMBER 472-84914</p>	<p>RB JOB NO. 3647T</p>	<p>DWG. SCALE 1"=20'-0"</p>
<p>DRAWING FILE LANDSCAPE BASE {Amidon 4}</p>			<p>SHEET 107</p>
			<p>OF 133</p>