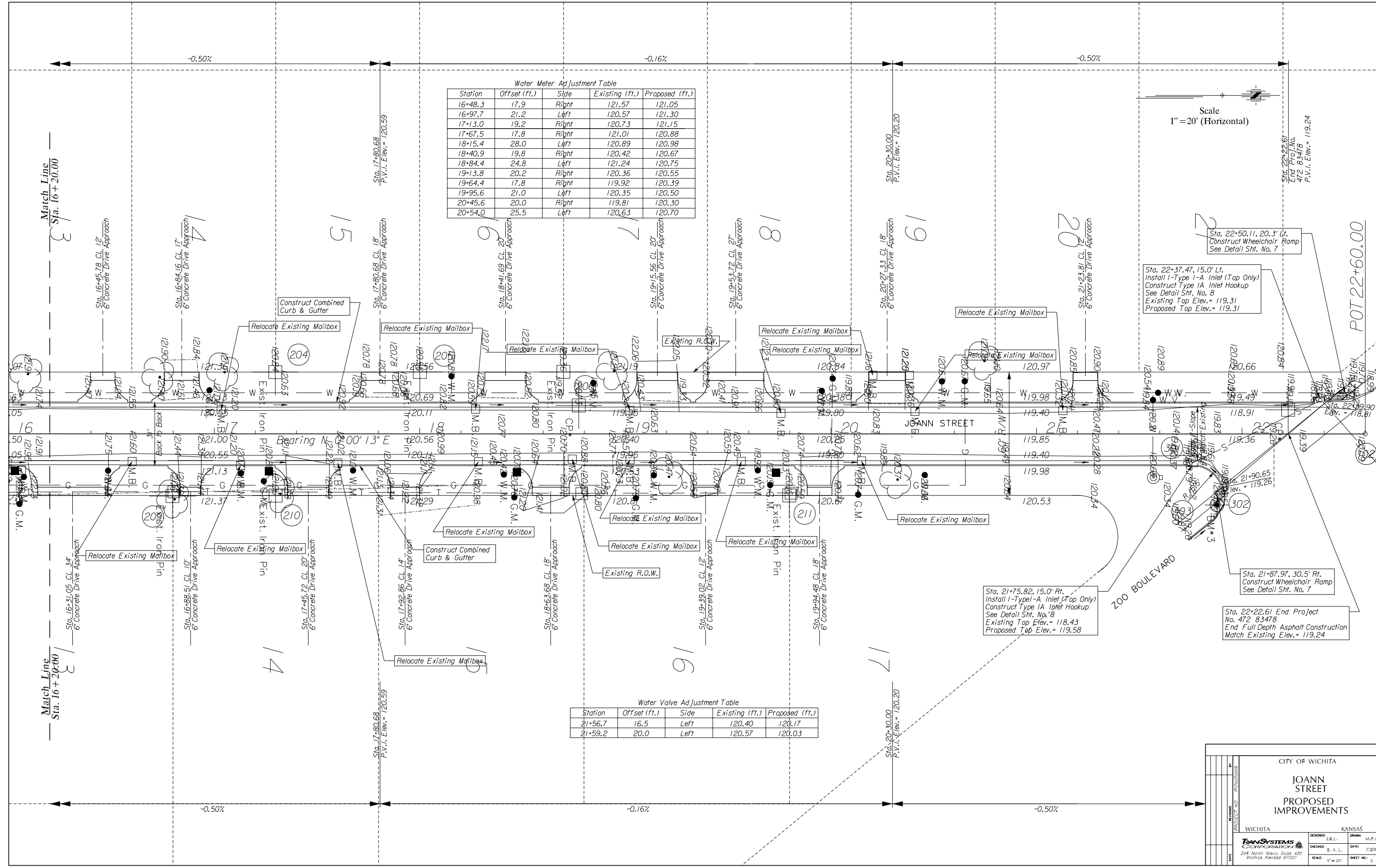


Water Meter Adjustment Table				
Station	Offset (ft.)	Side	Existing (ft.)	Proposed (ft.)
16+48.3	17.9	Right	121.57	121.05
16+97.7	21.2	Left	120.57	121.30
17+13.0	19.2	Right	120.73	121.15
17+67.5	17.8	Right	121.01	120.88
18+15.4	28.0	Left	120.89	120.98
18+40.9	19.8	Right	120.42	120.67
18+84.4	24.8	Left	121.24	120.75
19+13.8	20.2	Right	120.36	120.55
19+64.4	17.8	Right	119.92	120.39
19+95.6	21.0	Left	120.35	120.50
20+45.6	20.0	Right	119.81	120.30
20+54.0	25.5	Left	120.63	120.70

Water Valve Adjustment Table				
Station	Offset (ft.)	Side	Existing (ft.)	Proposed (ft.)
21+56.7	16.5	Left	120.40	120.17
21+59.2	20.0	Left	120.57	120.03

Scale
1" = 20' (Horizontal)



Sta. 22+50.11, 20.3' Lt.
Construct Wheelchair Ramp
See Detail Sht. No. 7

Sta. 22+37.47, 15.0' Lt.
Install 1-Type 1-A Inlet (Top Only)
Construct Type 1A Inlet Hookup
See Detail Sht. No. 8
Existing Top Elev. = 119.31
Proposed Top Elev. = 119.31

Sta. 21+87.97, 30.5' Rt.
Construct Wheelchair Ramp
See Detail Sht. No. 7

Sta. 21+75.82, 15.0' Rt.
Install 1-Type 1-A Inlet (Top Only)
Construct Type 1A Inlet Hookup
See Detail Sht. No. 8
Existing Top Elev. = 118.43
Proposed Top Elev. = 119.58

Sta. 22+22.61 End Project
No. 472 83478
End Full Depth Asphalt Construction
Match Existing Elev. = 119.24

CITY OF WICHITA

**JOANN STREET
PROPOSED
IMPROVEMENTS**

WICHITA, KANSAS

DESIGNED: J.R.L. DRAWN: M.P.M.
CHECKED: B. A. L. DATE: 7/2003
SCALE: 1" = 20' SHEET NO.: 5

TRANSYSTEMS
248 North Waco, Suite 420
Wichita, Kansas 67202

8:\work\cityofwichita\p102.dwg
07/25/03