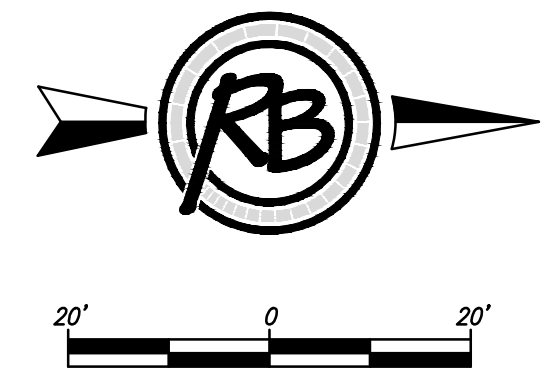


PROPOSED VALLEY GUTTER PAVING. SEE SHEET 5 FOR DETAIL AND SHEET 11 FOR INTERSECTION GRADING

CONSTRUCT TYPE 1A (DOUBLE) INLET HOOKUPS. PROPOSED INLET TOP ELEVS. 1284.18. (BOTH SIDES)

CONSTRUCT COMBINED ROLL TYPE CURB AND GUTTER (3 5/8") BOTH SIDES

CONSTRUCT TYPICAL 29' PAVEMENT SECTION. 5" AC PAVEMENT ON 5" ROCK BASE. SEE SHEET 2 FOR DETAIL.



INSTALL EOR MARKERS STA 4+75.00 CUSTER OFFSET - 5.0' (RT & LT)

STA 0+38.00 CUSTER BEGIN TYPICAL 29' PAVING SECTION.

CONSTRUCT 4' SIDEWALK (AE) (4"). AS INDICATED.

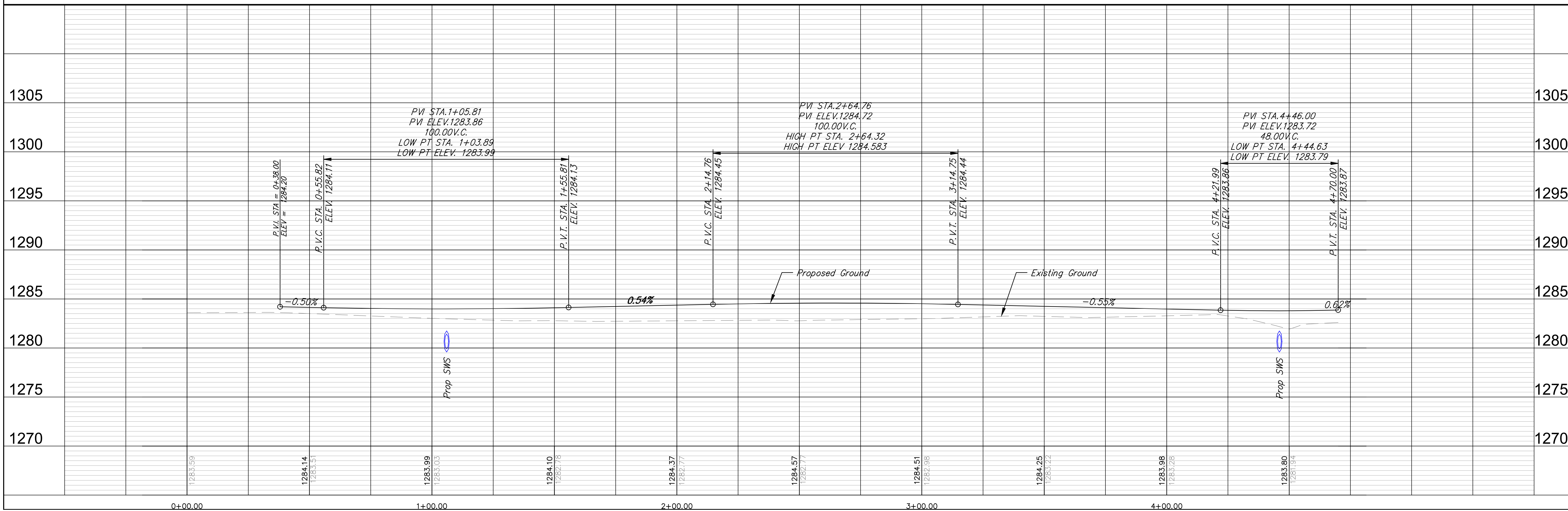
CONSTRUCT TYPE 1A (DOUBLE) INLET HOOKUPS. PROPOSED INLET TOP ELEVS. 1283.98. (BOTH SIDES)

4+51 END PROPOSED WALK

44TH ST. SOUTH

CUSTER

Legacy 3rd Addition



RUGGLES & BOHM
 PROFESSIONAL ENGINEERS LANDSCAPE ARCHITECTS SURVEYORS
 1001 N. WILSON ST., WICHITA, KS 67202
 PHONE: 316.261.1111 FAX: 316.261.1112

PROJECT NUMBER: Eng Base {CUSTER}

DESIGN: EJC
 DRAWING: EJC
 DATE: Dec. 1, 2014

REVIEW: EJC

**PAVING IMPROVEMENTS
 CUSTER STREET
 WICHITA, KANSAS**

RB JOB: 4135E
 SHEET: 32