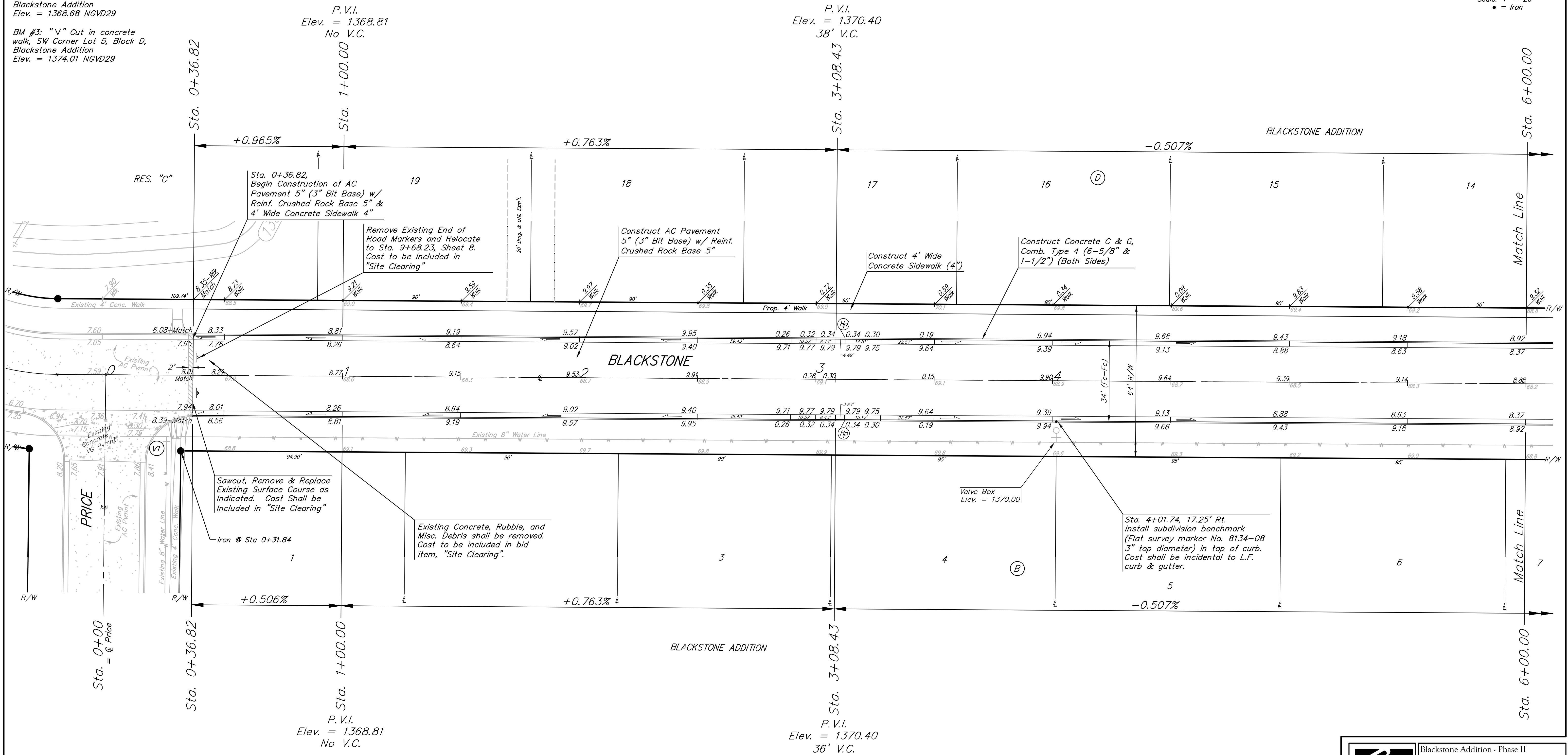
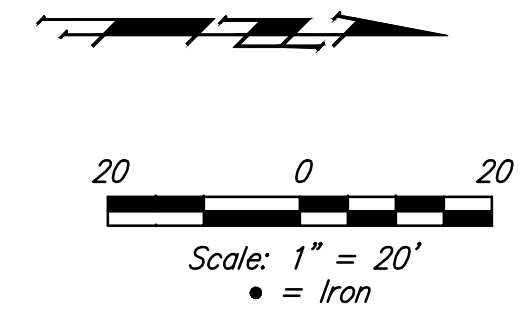


Benchmarks
 BM #1: Railroad Spike in HLP near the NE Corner Lot 10, Block B, Blackstone Addition (W. Face of HLP). Elev. = 1368.11 NGVD29

BM #2: "X" Cut in concrete walk, SW Corner Lot 1, Block B, Blackstone Addition Elev. = 1368.68 NGVD29

BM #3: "V" Cut in concrete walk, SW Corner Lot 5, Block D, Blackstone Addition Elev. = 1374.01 NGVD29



WATER VALVE LOCATION TABLE

VALVE NUMBER	STREET	BASELINE STATION	OFFSET DISTANCE	OFFSET DIRECTION
V1	Blackstone	0+25.86	28'	Rt.
V2	Blackstone	9+03.15	24'	Rt.
V3	Blackstone	10+15.64	26'	Rt.

Paving contractor will be responsible to operate all water valves on the project, in the presence of the inspector, to ensure accessibility to the valves, and that all valves are left in the "ON" position when the project is completed.

	Blackstone Addition - Phase II	
	BLACKSTONE STA. 0+36.82 TO STA. 6+00.00	
Baughman Company, P.A. 315 Ellis St. Wichita, KS 67211 P 316-262-2271 F 316-262-2049 ENGINEERING SURVEYING PLANNING LANDSCAPE ARCHITECTURE		
PROJECT NUMBER 472-84398	DESIGN AEG	DRAWN GRF
REVISIONS:		APPROVED DATE 11/24/14
SCALE Noted		SHEET 7 OF 33
E:\Projects\Blackstone\Engineering\Phase 2\Sr_0806-E137\07_srl.dwg		