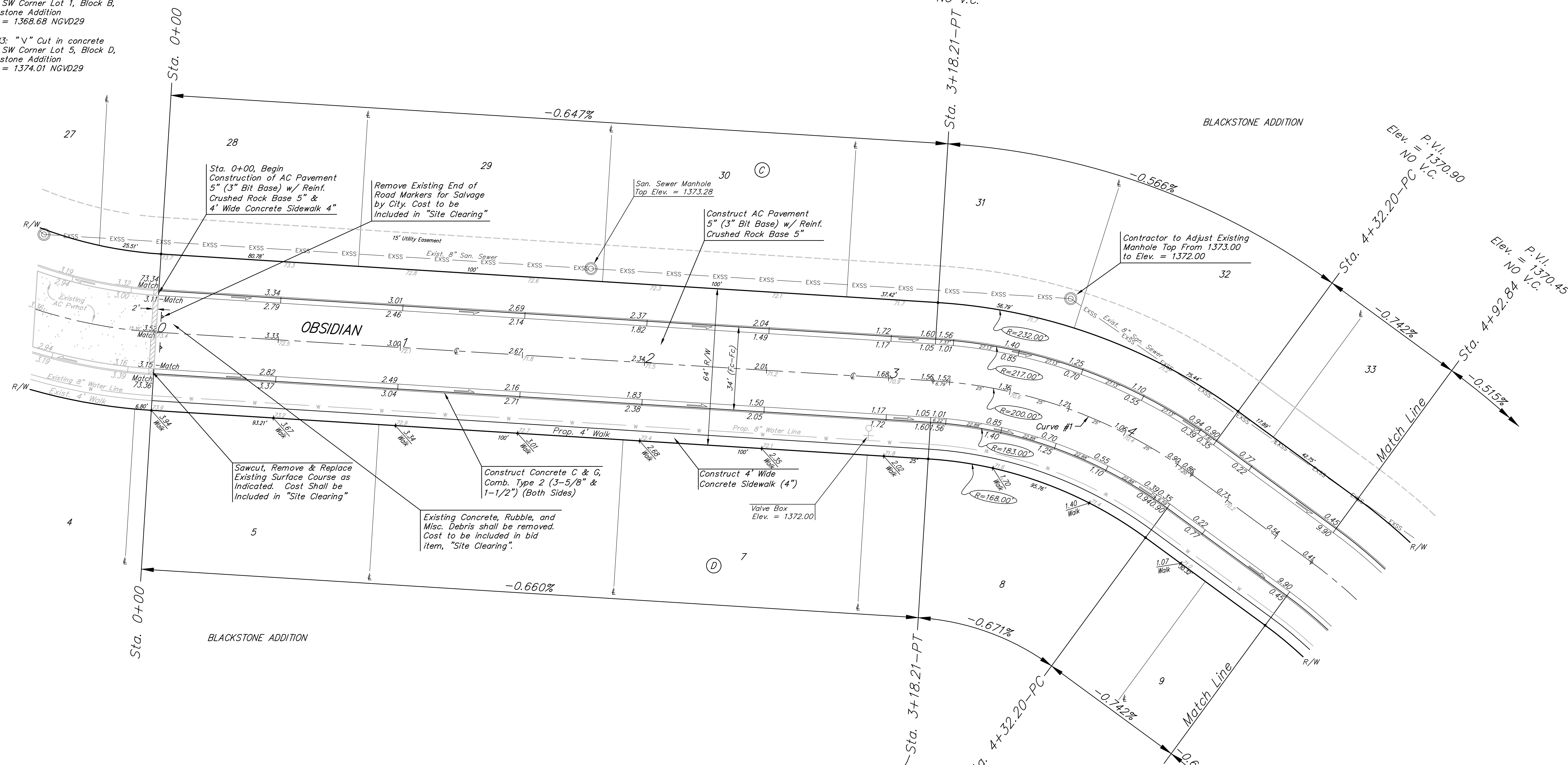


Benchmarks
 BM #1: Railroad Spike in HLP near the NE Corner Lot 10, Block B, Blackstone Addition (W. Face of HLP). Elev. = 1368.11 NGVD29

BM #2: "X" Cut in concrete walk, SW Corner Lot 1, Block B, Blackstone Addition Elev. = 1368.68 NGVD29

BM #3: "V" Cut in concrete walk, SW Corner Lot 5, Block D, Blackstone Addition Elev. = 1374.01 NGVD29

Scale: 1" = 20'
 • = Iron



Curve #1
 Curve Data Based on Centerline

Rad. = 200' Delta = 32°39'26" Tangent = 58.59'
 Arc = 113.99' L.C. = 112.46' Def./Ft. = 8.59476 Min.

Station	Arc	Face Chord Lengths		Defl.	Total Defl.
		B' Left	B' Right		
3+18.21	-	-	-	0'00"00"	0'00"00"
3+25.00	6.79'	7.64'	5.94'	0'58"22"	0'58"22"
3+50.00	25.00'	28.11'	21.86'	3'34"52"	4'33"14"
3+75.00	25.00'	28.11'	21.86'	3'34"52"	8'08"06"
4+00.00	25.00'	28.11'	21.86'	3'34"52"	11'42"58"
4+25.00	25.00'	28.11'	21.86'	3'34"52"	15'17"50"
4+32.20	7.20'	8.10'	6.30'	1'01"53"	16'19"43"

P.V.I. Elev. = 1371.60 NO V.C.
 Sta. 3+18.21-PT
 P.V.I. Elev. = 1370.90 NO V.C.
 Sta. 4+32.20-PC
 P.V.I. Elev. = 1370.45 NO V.C.
 Sta. 4+92.84

Roll type curb & gutter to be constructed on the pavement on this sheet.
 Top of curb elevation are given for full height curb.

	Blackstone Addition - Phase II	
	OBSIDIAN STA. 0+00 TO STA. 4+92.84	
<small>Baughman Company, P.A. 315 Ellis St., Wichita, KS 67211 P 316-262-7371 F 316-262-0149 ENGINEERING SURVEYING PLANNING LANDSCAPE ARCHITECTURE</small>		
PROJECT NUMBER 47284398	DESIGN AEG	DRAWN GRF
REVISIONS:	APPROVED Noted	DATE 11/24/14
		SCALE Noted
		SHEET 9 OF 33