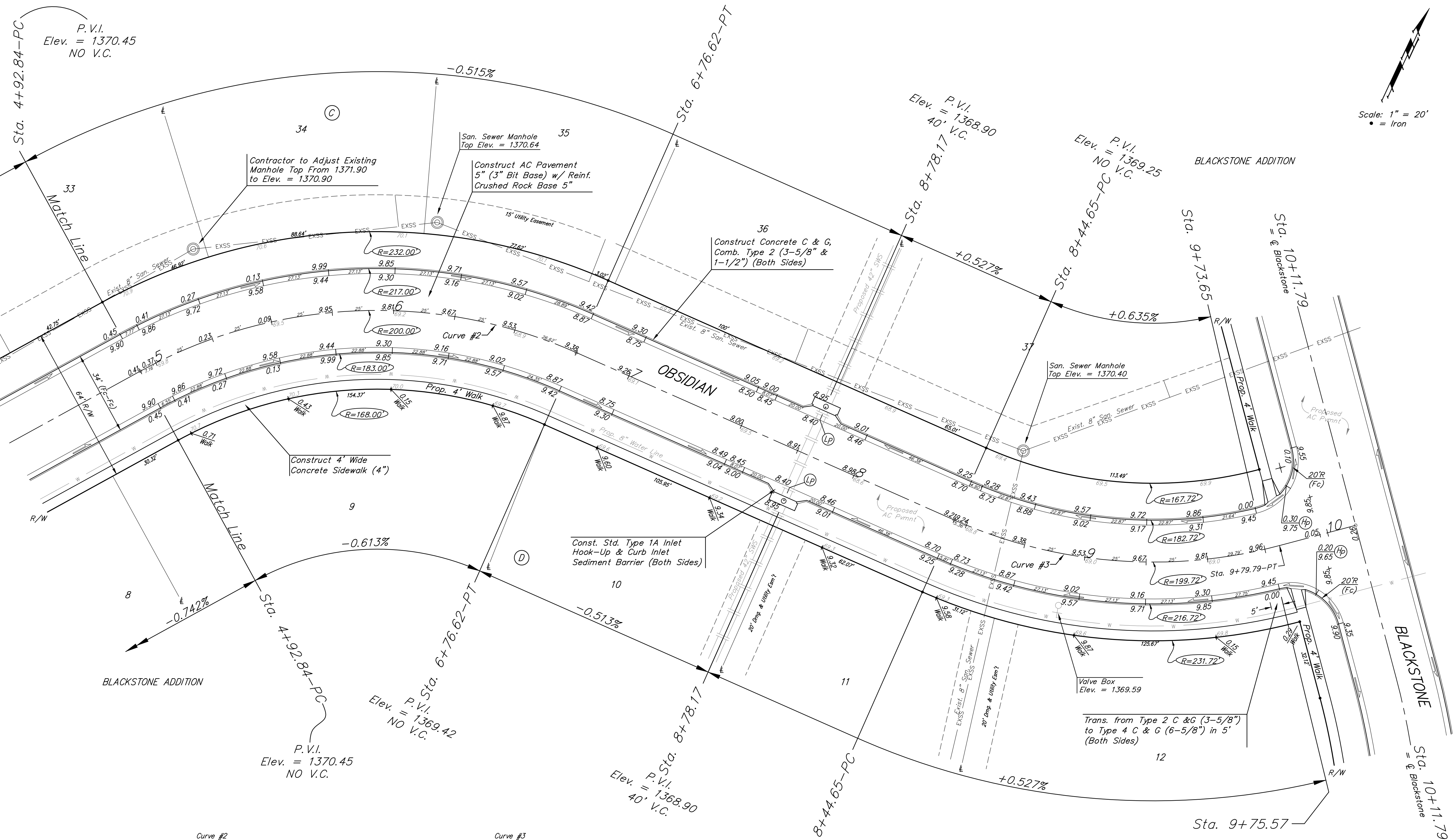
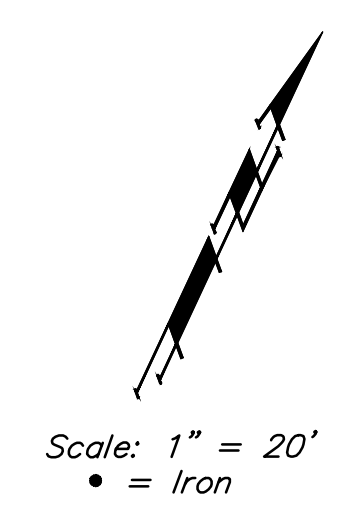


**Benchmarks**  
 BM #1: Railroad Spike in HLP near the NE Corner Lot 10, Block B, Blackstone Addition (W. Face of HLP). Elev. = 1368.11 NGVD29  
 BM #2: "X" Cut in concrete walk, SW Corner Lot 1, Block B, Blackstone Addition Elev. = 1368.68 NGVD29  
 BM #3: "V" Cut in concrete walk, SW Corner Lot 5, Block D, Blackstone Addition Elev. = 1374.01 NGVD29



**Curve #2**  
 Curve Data Based on Centerline  
 Rad. = 200' Delta = 52°38'54" Tangent = 98.95'  
 Arc = 183.78' L.C. = 177.38' Def./Ft. = 8.59424 Min.

Station	Arc	Face Chord Lengths		Defl.	Total Defl.
		8' Left	8' Right		
4+92.84	-	-	-	0°00'00"	0°00'00"
5+00.00	7.16'	8.05'	6.26'	1°01'32"	1°01'32"
5+25.00	25.00'	28.11'	21.86'	3°34'51"	4°36'23"
5+50.00	25.00'	28.11'	21.86'	3°34'52"	8°11'15"
5+75.00	25.00'	28.11'	21.86'	3°34'51"	11°46'06"
6+00.00	25.00'	28.11'	21.86'	3°34'52"	15°20'58"
6+25.00	25.00'	28.11'	21.86'	3°34'51"	18°55'49"
6+50.00	25.00'	28.11'	21.86'	3°34'51"	22°30'40"
6+75.00	25.00'	28.11'	21.86'	3°34'52"	26°05'32"
6+76.62	1.62'	1.82'	1.42'	0°13'55"	26°19'27"

**Curve #3**  
 Curve Data Based on Centerline  
 Rad. = 199.72' Delta = 38°46'12" Tangent = 70.27'  
 Arc = 135.14' L.C. = 132.58' Def./Ft. = 8.60663 Min.

Station	Arc	Face Chord Lengths		Defl.	Total Defl.
		8' Left	8' Right		
8+44.65	-	-	-	0°00'00"	0°00'00"
8+50.00	5.35'	4.68'	6.02'	0°46'03"	0°46'03"
8+75.00	25.00'	21.86'	28.11'	3°35'10"	4°21'13"
9+00.00	25.00'	21.86'	28.11'	3°35'10"	7°56'23"
9+25.00	25.00'	21.86'	28.11'	3°35'10"	11°31'33"
9+50.00	25.00'	21.86'	28.11'	3°35'10"	15°06'43"
9+73.65	23.65'	20.68'	26.60'	3°23'32"	18°30'15"
9+75.00	1.35'	1.18'	1.52'	0°11'37"	18°41'52"
9+75.57	0.57'	0.50'	0.64'	0°04'55"	18°46'47"
9+79.79	4.22'	3.69'	4.75'	0°36'19"	19°23'06"

Roll type curb & gutter to be constructed on the pavement on this sheet.  
 Top of curb elevation are given for full height curb.

**Baughman** Blackstone Addition - Phase II  
**OBSIDIAN**  
 STA. 4+92.84 TO STA. 9+75.57

ENGINEERING | SURVEYING | PLANNING | LANDSCAPE ARCHITECTURE

PROJECT NUMBER: 472-84398  
 DESIGN: AEG  
 DRAWN: GRP

APPROVED: [Signature]  
 DATE: 11/24/14

SCALE: Noted  
 SHEET: 10 OF 33