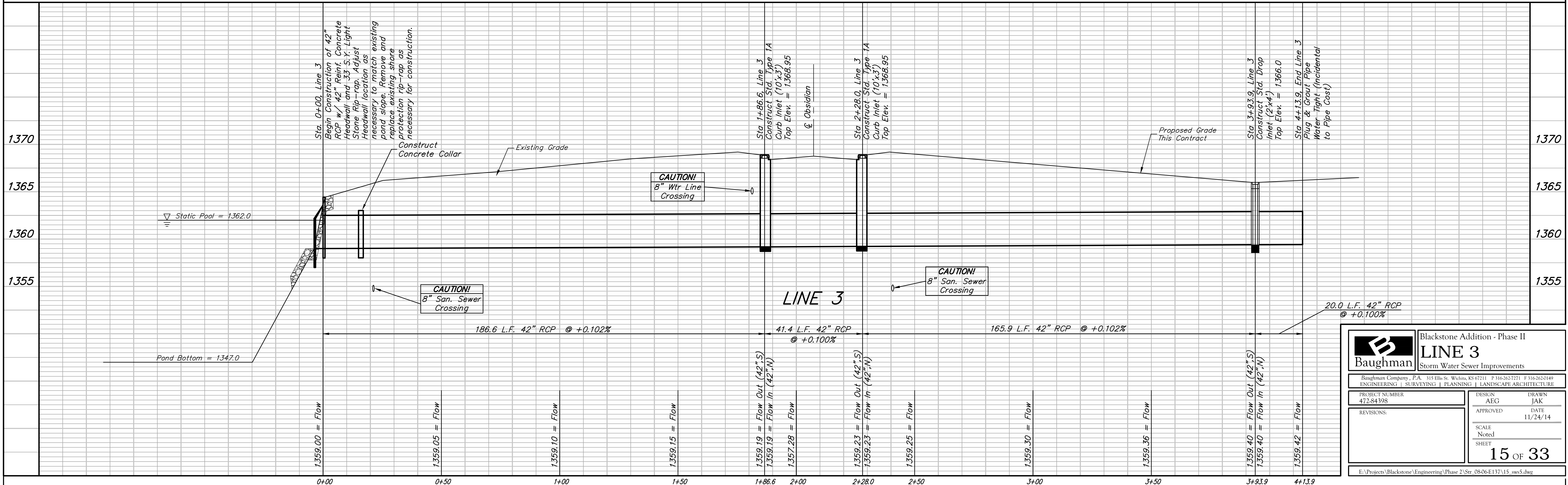
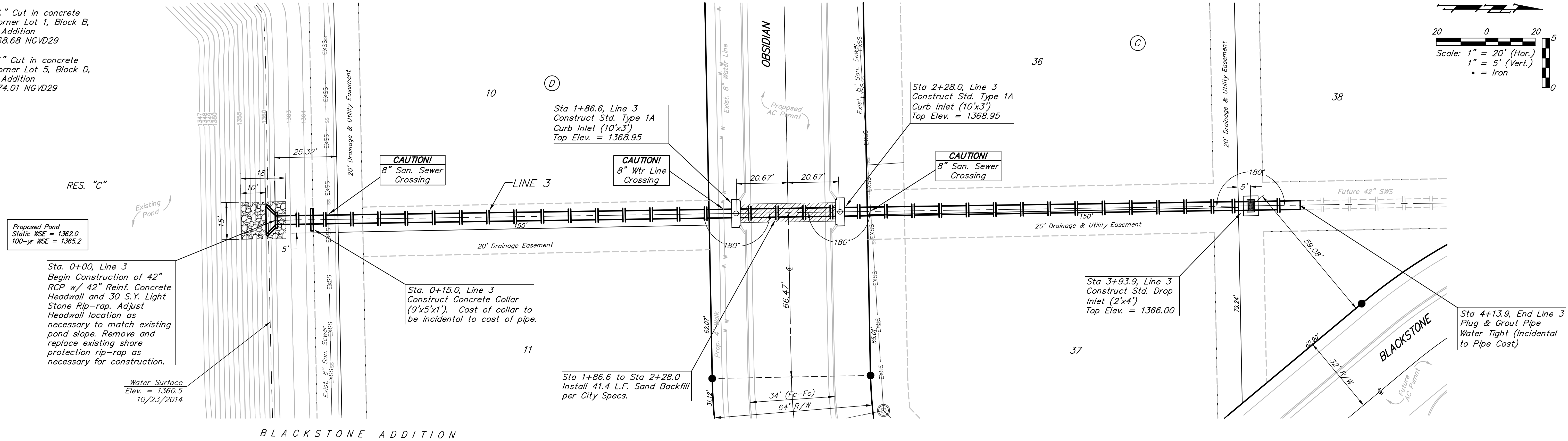
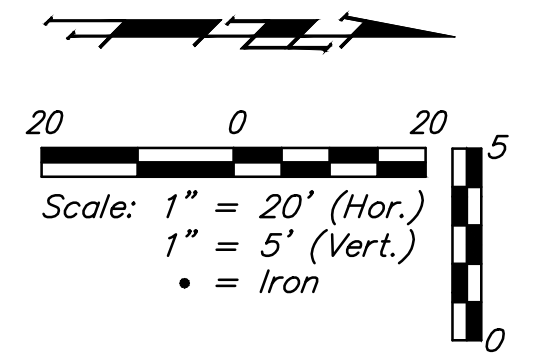


**Benchmarks**  
 BM #1: Railroad Spike in HLP near the NE Corner Lot 10, Block B, Blackstone Addition (W. Face of HLP). Elev. = 1368.11 NGVD29

BM #2: "X" Cut in concrete walk, SW Corner Lot 1, Block B, Blackstone Addition Elev. = 1368.68 NGVD29

BM #3: "V" Cut in concrete walk, SW Corner Lot 5, Block D, Blackstone Addition Elev. = 1374.01 NGVD29

BLACKSTONE ADDITION



|  |               |  |                          |
|--|---------------|--|--------------------------|
|  |               | <b>Blackstone Addition - Phase II</b><br><b>LINE 3</b><br>Storm Water Sewer Improvements |                          |
| <small>Baughman Company, P.A. 315 Ellis St. Wichita, KS 67211 P 316-262-7271 F 316-262-0149<br/>         ENGINEERING   SURVEYING   PLANNING   LANDSCAPE ARCHITECTURE</small> |               |  |                          |
| PROJECT NUMBER<br>472-84398  | DESIGN<br>AEG | DRAWN<br>JAK   | DATE<br>11/24/14         |
| REVISIONS:   | APPROVED      | SCALE<br>Noted   | SHEET<br><b>15 OF 33</b> |
| <small>E:\Projects\Blackstone\Engineering\Phase 2\Str_08-06-E137.15_sw5.dwg</small>  |               |  |                          |