

Benchmarks
 BM #1: Railroad Spike in HLP near the NE Corner Lot 10, Block B, Blackstone Addition (W. Face of HLP). Elev. = 1368.11 NGVD29
 BM #2: "X" Cut in concrete walk, SW Corner Lot 1, Block B, Blackstone Addition Elev. = 1368.68 NGVD29
 BM #3: "V" Cut in concrete walk, SW Corner Lot 5, Block D, Blackstone Addition Elev. = 1374.01 NGVD29

EROSION CONTROL PLAN LEGEND

- DROP INLET PROTECTION
- CURB INLET PROTECTION
- DITCH CHECKS
- SILT FENCING
- CUT-OFF TRENCH
- BACK OF CURB PROTECTION
- EROSION CONTROL MAT
- TEMPORARY DITCH
NO SCALE

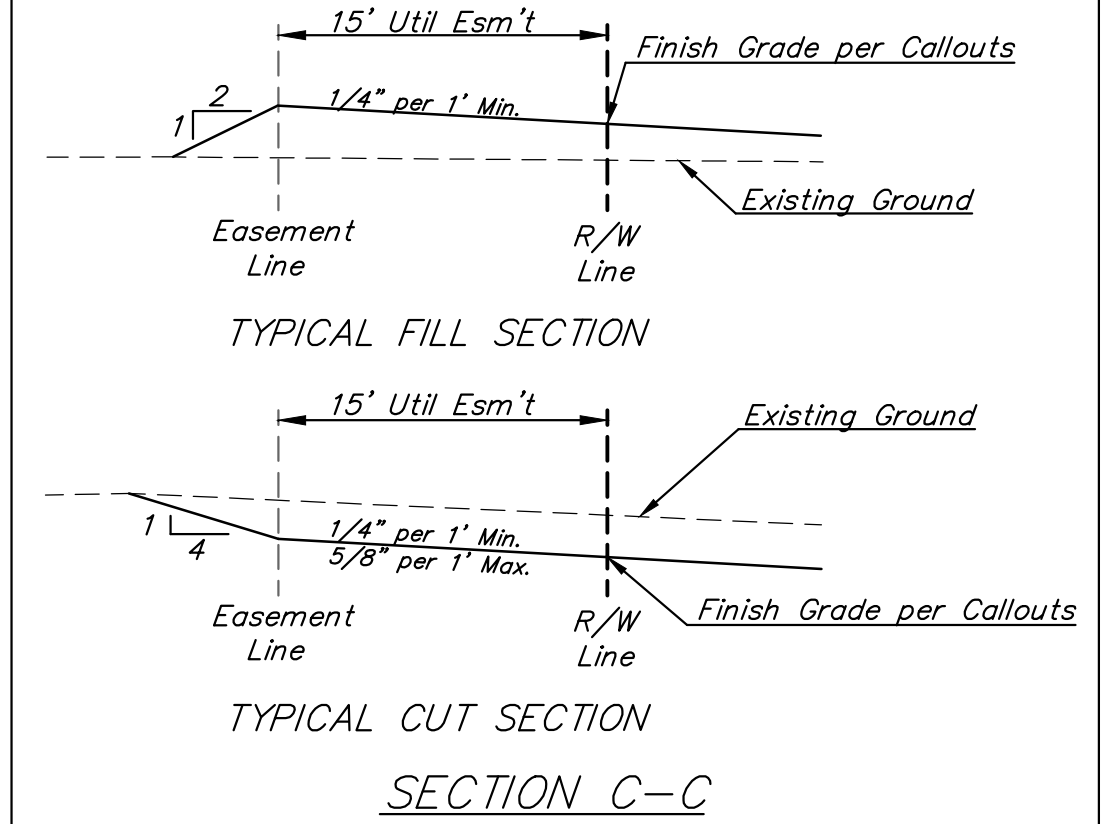
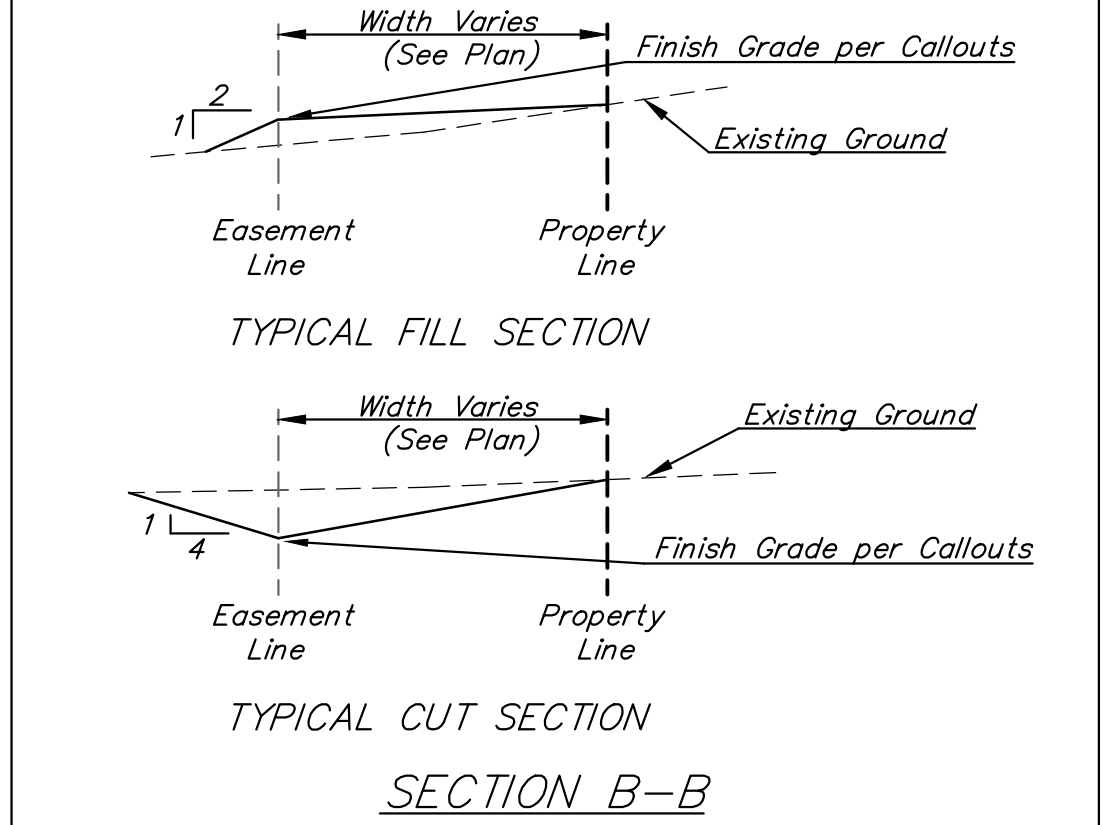
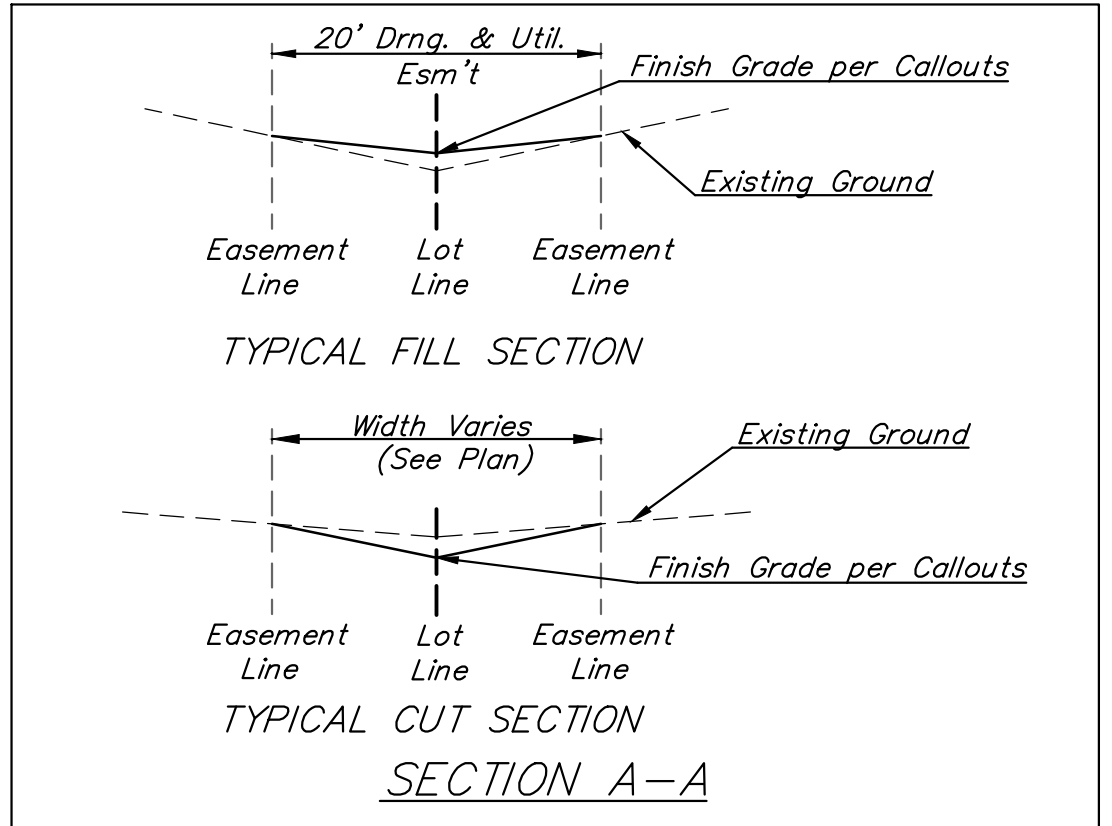
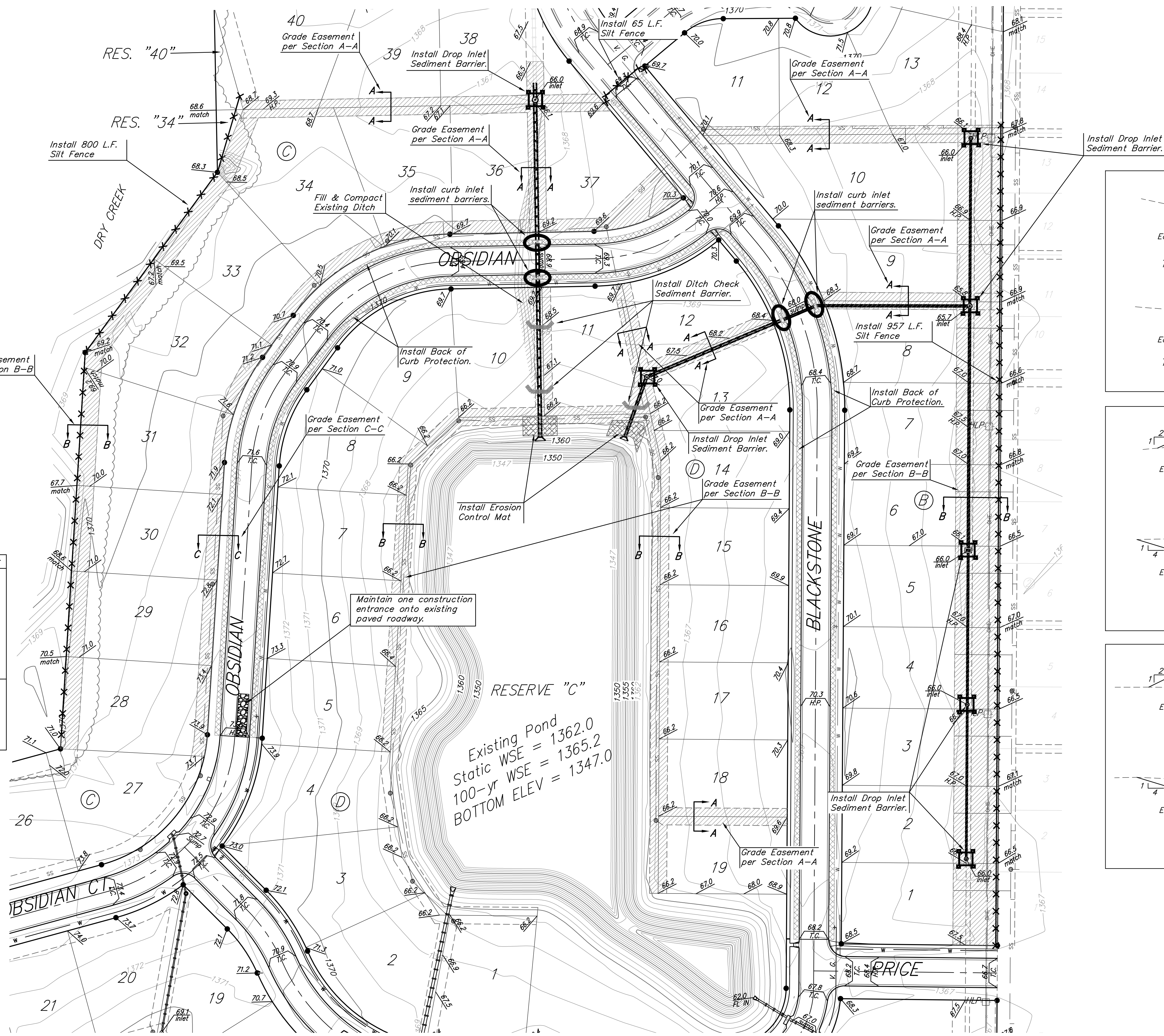
NOTE: 6' WIDE BACK OF CURB PROTECTION TO BE USED ON THIS PROJECT

EROSION CONTROL MEASURE	INSTALL	MAINTAIN	REMOVE
BACK OF CURB PROTECTION (LF)	4072	0	0
CONSTRUCTION ENTRANCE (EA)	0	1	0
CURB INLET BARRIER (EA)	4	0	0
DITCH CHECK (EA)	3	0	0
DROP INLET PROTECTION (EA)	7	0	0
EROSION CONTROL (LS)	0	0	0
EROSION CONTROL BERM (LF)	0	0	0
SILT FENCE (LF)	1822	0	0
EROSION CONTROL MAT (SY)	195	0	0

Quantities are for information only! contractor shall verify quantities per final bid quantity sheet.
 * All existing BMPs including Construction Entrance, Sediment Barriers, Silt Fence, Cut-off Trench, and Erosion Control Mat shall be maintained and repaired if necessary. Replacement or removal of erosion control measures to be paid for by L.S. Bid item "Maintain Existing Erosion Control BMPs"

1370 Existing Ground
 = Easements To Be Graded
 45.0 Proposed Grades
 Approximate Easement Grading Quantities:
 (For Information Only)
 Excavation: 360 C.Y.
 Fill: 630 C.Y.

The Contractor shall fill and grade the easements as shown to the elevations given on the easement grading plan. The Contractor shall 'straight' grade the easements between the elevations given. Where a callout designates 'Match', the contractor will grade to the existing ground elevation. All costs for grading shall be incidental to the Easement Grading Bid Item. Additional material required to fill the easements has been calculated and included in bid item, "Borrow Excavation."
NOTE:
 When trees are present along rear lot line, grade shall match at trunk line and trees shall not be disturbed. Any trimming of trees shall be approved by the Engineer and Owner.



Baughman Blackstone Addition - Phase II
EROSION CONTROL PLAN/ESMT. GRADING PLAN
 Street & SWS Improvements

Baughman Company, P.A. 315 Ellis St. Wichita, KS 67211 P 316-262-7271 F 316-262-0149
 ENGINEERING | SURVEYING | PLANNING | LANDSCAPE ARCHITECTURE

PROJECT NUMBER: 472-84398 DESIGN: AEG DRAWN: JAK/TMS
 APPROVED: DATE: 11/24/14
 REVISIONS: SCALE: Noted SHEET: 16 OF 33