

PRIVATE SANITARY SEWER IMPROVEMENTS TO SERVE LAWRENCE ELEMENTARY SCHOOL Lot 1, Mayberry Lawrence School Addition PROJECT NUMBER 2133 PPS (607861)

INDEX OF SHEETS

(CITY SUBMITTAL INDEX)
C1.15 TITLE SHEET
C1.16 SANITARY SEWER PLAN & PROFILE

BENCHMARKS

BENCH MARK #1: "□" CUT AT THE INTERSECTION OF THE BACK OF WALK & THE BACK OF CURB, 34' SOUTH & 5' EAST OF EXISTING S.E. COR. OF LAWRENCE ELEM. SCHOOL BLDG.
ELEV.= 1304.76 (NAVD 88)

T. Mason - City of Wichita, Inspector
Release Date: 01/15/2015
:APRosas 1/20/2015

GENERAL NOTES

1. Contractor will be required to provide a minimum advance notice of seventy-two (72) hours to utility companies prior to starting any excavation as follows:

Kansas One-Call 687-2470

The Contractor must notify the following in case of an emergency:

Cox Communications	262-0661
Kansas Gas Service	888-482-4950
Westar	383-8600
Aquila	1-800-303-0357
SBC	1-800-286-8313
City of Wichita Water Department	262-6000
City of Wichita Sewer Maintenance	262-6000

2. Underground utility service lines and overhead utility pole lines are to be adjusted as necessary by others prior to construction unless the plans specifically call for their adjustment by the Contractor or unless the plans specifically identify a utility to be adjusted by its owner during construction. Existing utilities and their location, as shown on the plans, represent the best information obtainable for design. Location information has been obtained from the various utility companies and is either from company record drawings or company-provided field locations. The Contractor will be required to work around existing utilities within the right-of-way which do not conflict with proposed construction.

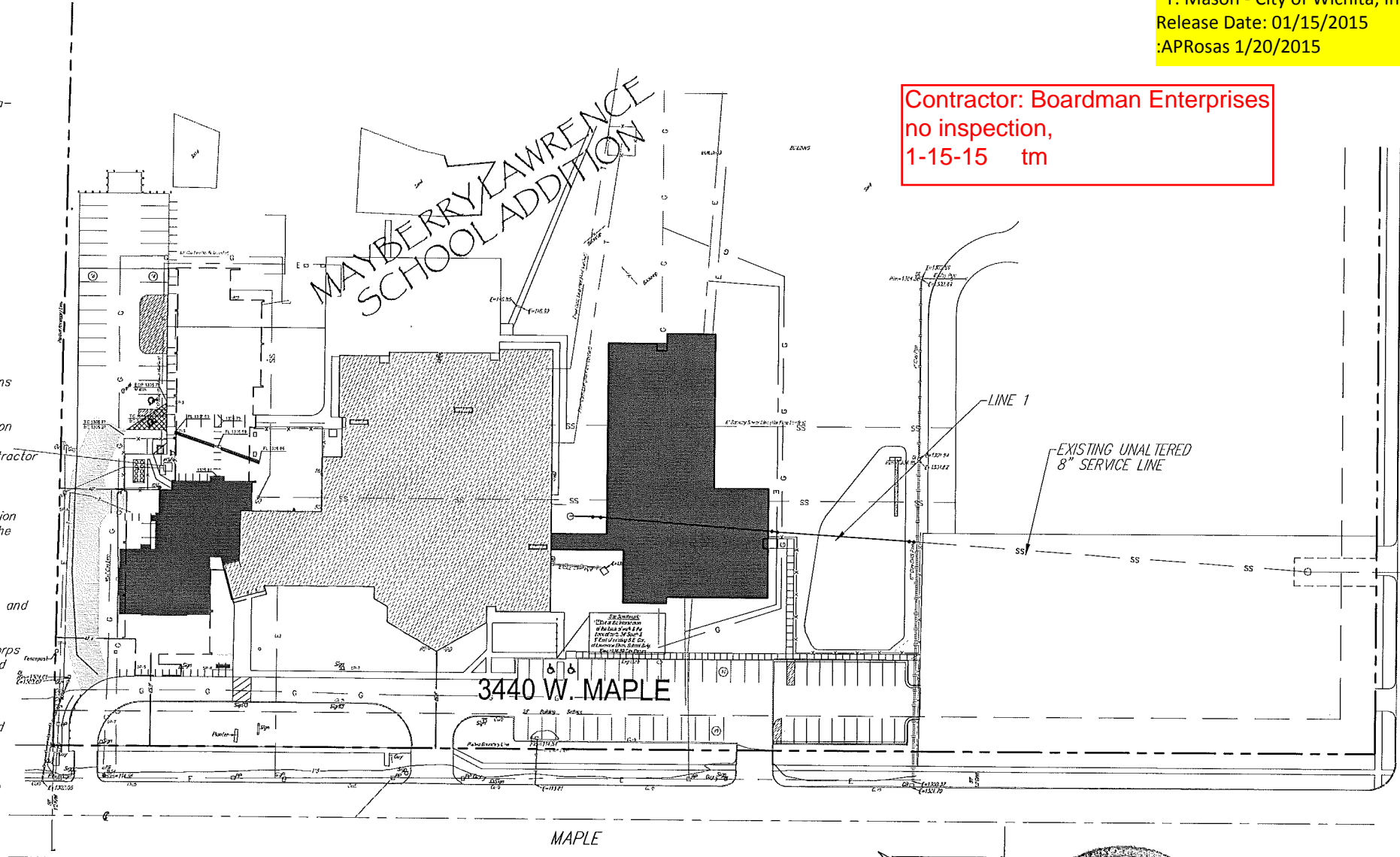
3. Rubble from the removal of miscellaneous structures and excess excavation which is to be wasted shall be disposed of on sites to be provided by the Contractor. These sites shall be approved by the Engineer as to suitability, appearance and site location. Locations that, in the opinion of the Engineer, will leave an unsightly appearance will not be approved.

4. All disposal sites must be approved by the Kansas Department of Health and Environment. Material either stockpiled or disposed of in a flood plain would require a Kansas State Board of Agriculture permit. Any material dumped in waters of the United States or wetlands is subject to U.S. Corps permitting regulations. Any material buried or stockpiled beyond approved of Engineers construction limits would require additional archeological investigations unless buried in a previously approved borrow location.

5. The Contractor shall give all property owners and/or tenants of developed property directly abutting the construction of this project a minimum of ten (10) days advance notice prior to start of construction.

6. All work associated with these Sanitary Sewer plans shall be performed in compliance with City of Wichita Standard Specifications.

Contractor: Boardman Enterprises
no inspection,
1-15-15 tm



APPROVED AS NOTED
BY CITY ENGINEER OF WICHITA

Julianne Kellman 7-11-12

Sanitary Sewer _____

Storm Sewers _____

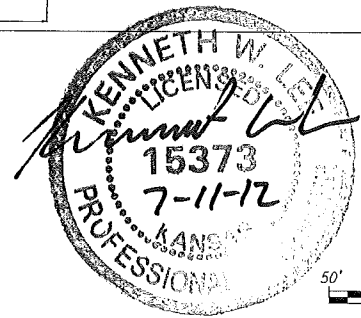
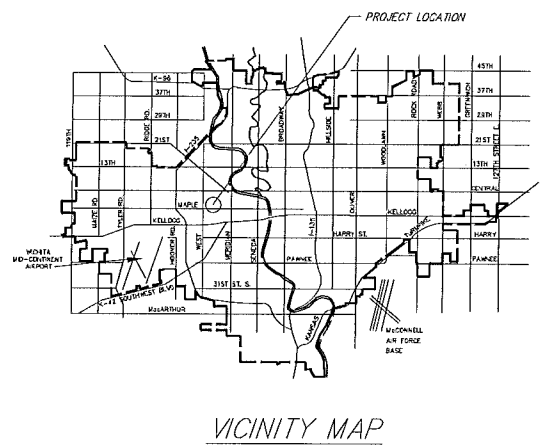
Driveway Approaches _____

Water Mains _____

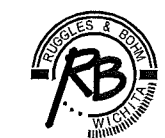
Paving _____

NOTE TO CONTRACTORS

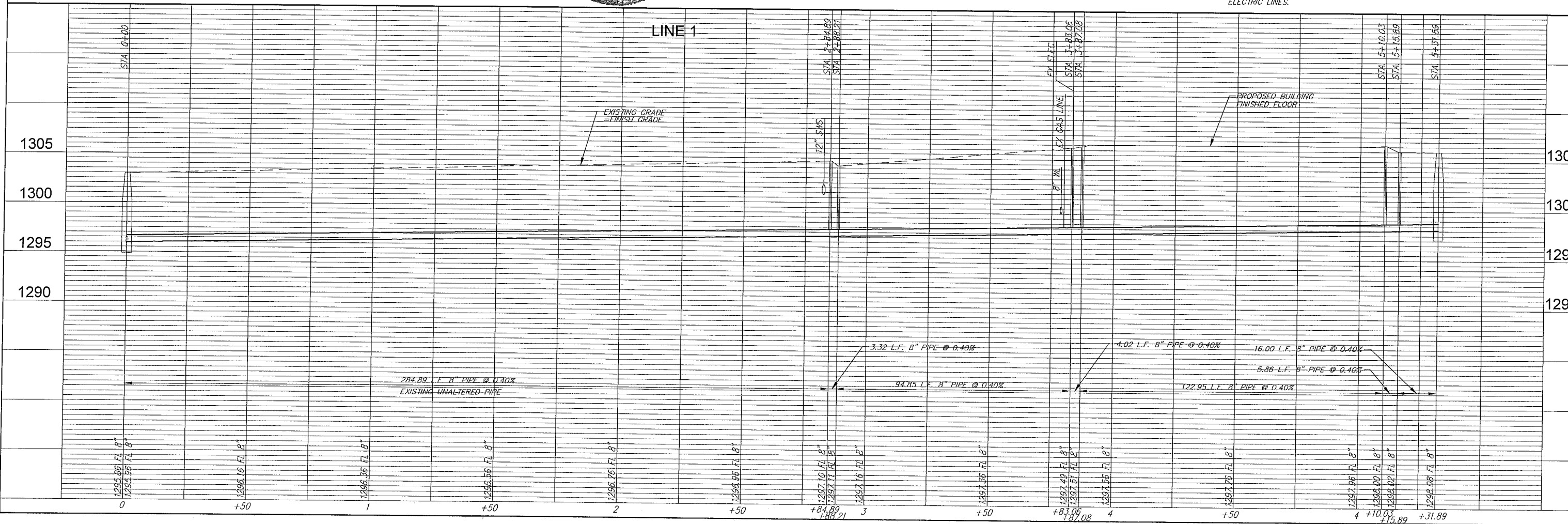
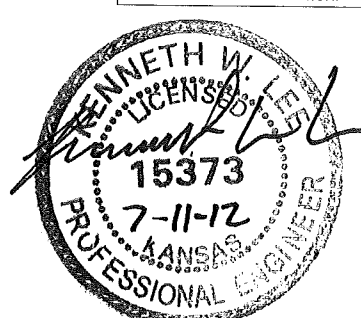
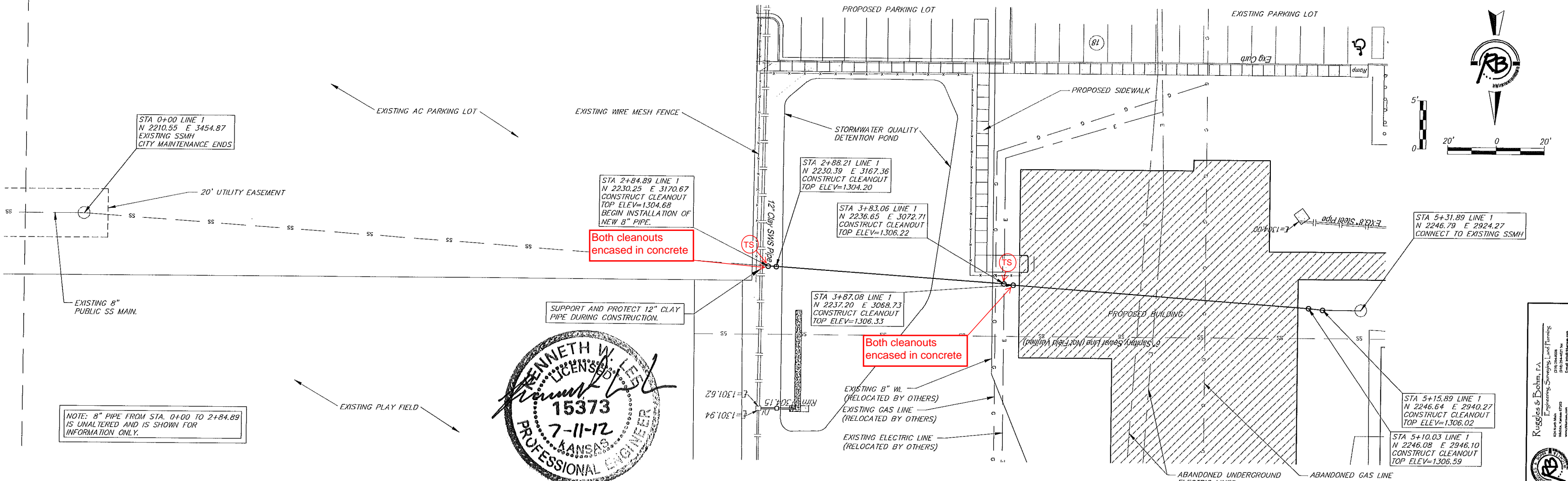
Inspection and testing for this project are to be provided by a Licensed Consulting Engineering Firm under contract with the Owner/Developer. Said inspection to be in accordance with the City of Wichita standard construction engineering practices and certified by a Licensed Professional Engineer. No work shall be performed in dedicated easements or public right-of-way by the Contractor without such inspection, nor shall any work be commenced without written authorization by the City Engineer.



CITY OF WICHITA, KANSAS
GARY JANZEN, P.E., INTERIM CITY ENGINEER



Ruggles & Bohm, P.A.
Engineering, Surveying, Land Planning
924 North Main (316) 264-8008
Wichita, Kansas 67203 (316) 264-4621 fax
www.rbkansas.com E-mail: info@rbkansas.com



PROJECT NUMBER: 2133 PPS
DRAWING FILE: [REDACTED]
ENG. BASE: [PPS P&P]

DESIGN: BT
UTILITY

DRAWN: MJP
DATE: July 3, 2012

REVIEW: [REDACTED]

Ruggles & Bohm, P.A.
Engineering, Surveying, Land Planning
2100 S.W. 48th Ave.
Miami, Florida 33155
Phone: 305.444.1111
Fax: 305.444.1112

LAWRENCE ELEMENTARY SCHOOL
SANITARY SEWER PLAN—PROFILE
WICHITA, KANSAS

Sheet: 176 of 176
Scale: 1" = 10' 16"