

EASEMENT GRADING DETAILS

▨ = AREAS TO BE GRADED

H.P. = HIGH POINT
M.E. = MATCH EXISTING

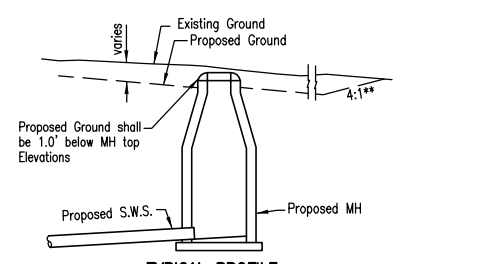
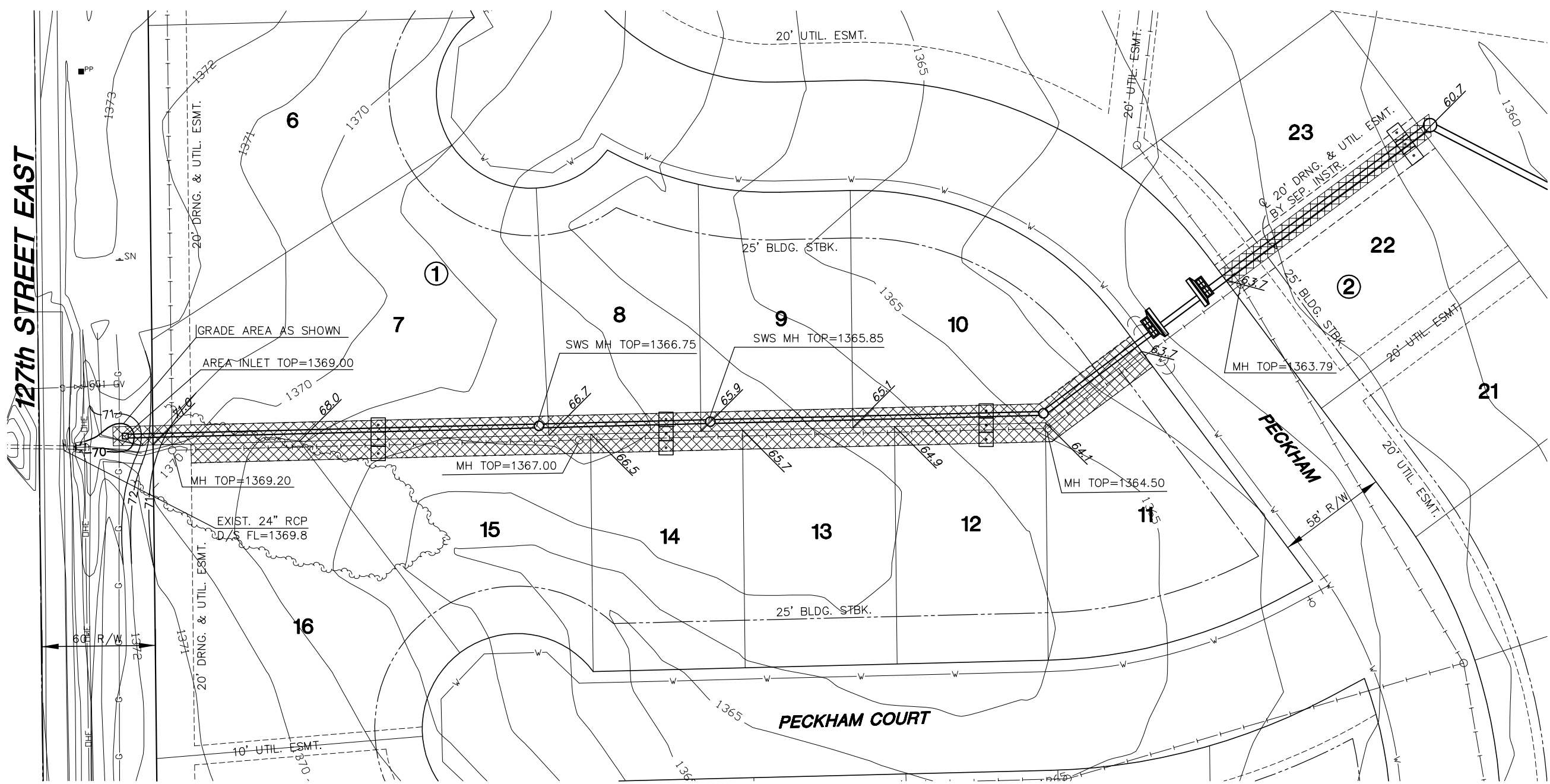
•••

Hay-bale sediment barrier

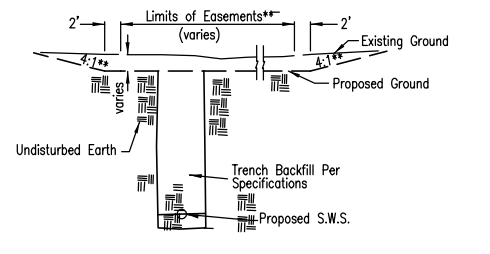
**Graded widths and slopes may vary as approved by the Engineer to minimize conflict with existing trees.

Easement Grading will be bid on a lump sum basis for grading the easements to the profile and elevations shown on the Easement Grading Plan (this sheet). Approximate quantities of earthwork for easement grading are shown below. These approximate quantities are given for information only. The Contractor should verify the quantities when preparing the proposal.

Cut 1324 C.Y. (Approximate)
Fill 860 C.Y. (Approximate)

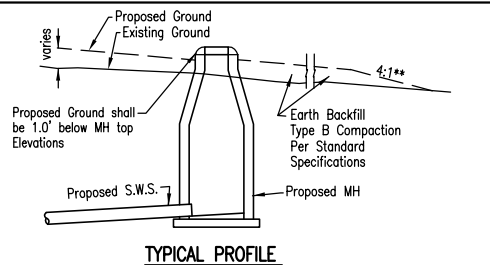


TYPICAL PROFILE

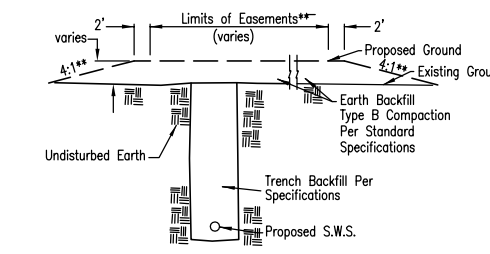


TYPICAL SECTION

"CUT" SITUATIONS



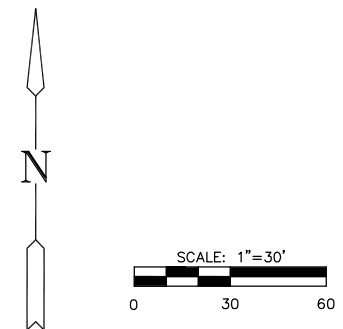
TYPICAL PROFILE



TYPICAL SECTION

"FILL" SITUATIONS

NOTE
WIDTH OF EASEMENT GRADING SHALL BE EQUIVALENT TO THE WIDTH OF EASEMENT PLUS 4' AS SHOWN ON THE DETAILS ON THIS SHEET.



H:\CIVIL\02167\DWG\Grd\ESMT-GRD

MKEC
ENGINEERING
CONSULTANTS
411 N. WEBB ROAD
WICHITA, KS. 67206
316-684-9600

HAWTHORNE ADDITION PROJECT NAME		
EASEMENT GRADING SHEET TITLE		
DESIGN BY: BFL	DRAWN BY: BFL	CHECKED BY: DRK
DATE: MARCH 2003	JOB NO.: ESMT-GRD	SHEET/OF: 14 / 30