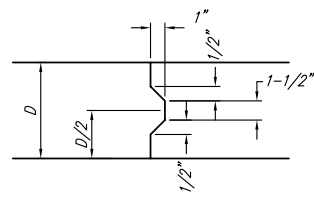
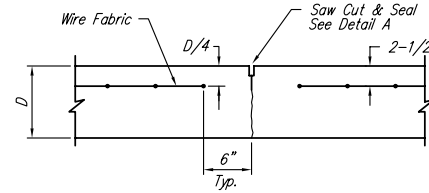


**EXPANSION JOINT**

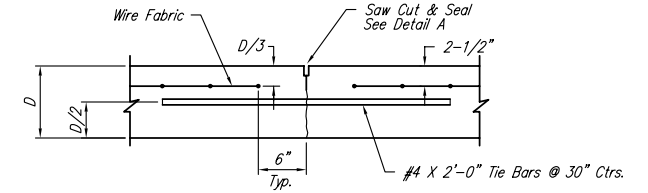
NOTE: Extra Thickness to be Subsidiary to Price of Square Yards Pavement



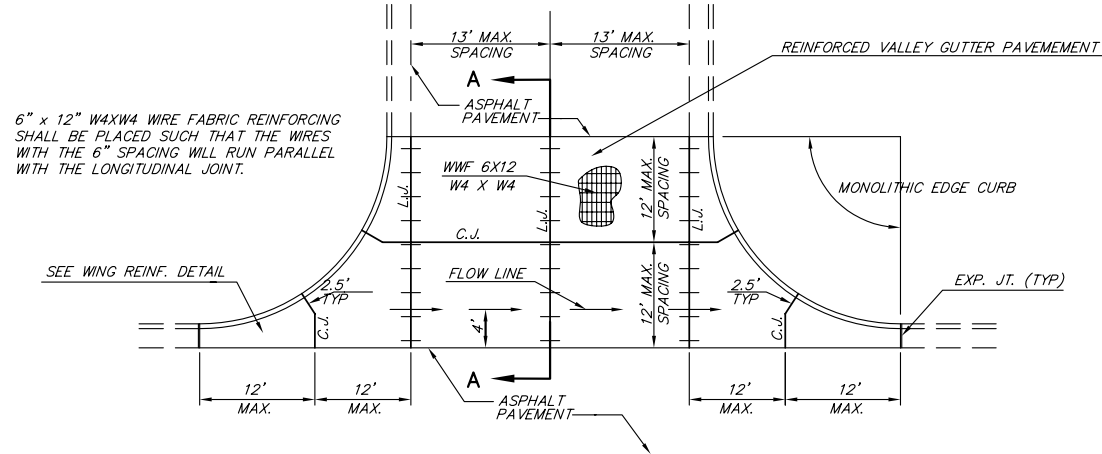
**KEYWAY DETAIL**



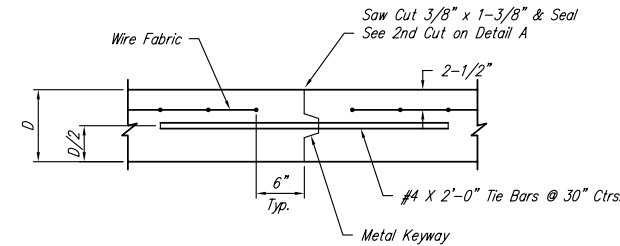
**CONTRACTION JOINT DETAIL (C.J.)**



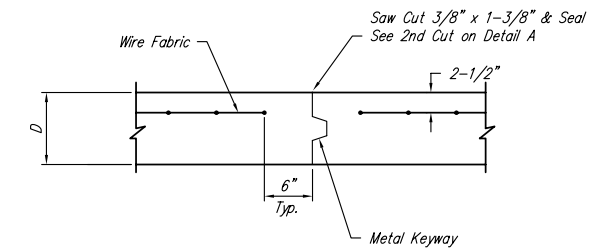
**LONGITUDINAL JOINT DETAIL (L.J.)**



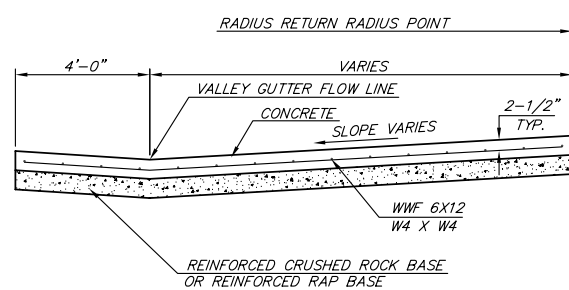
**PLAN**



**OPTIONAL LONGITUDINAL JOINT DETAIL (L.J.)**

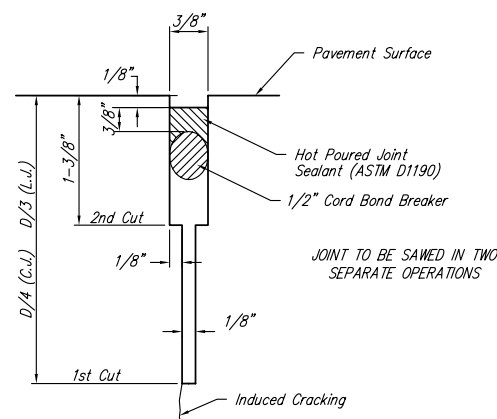


**OPTIONAL CONTRACTION JOINT**

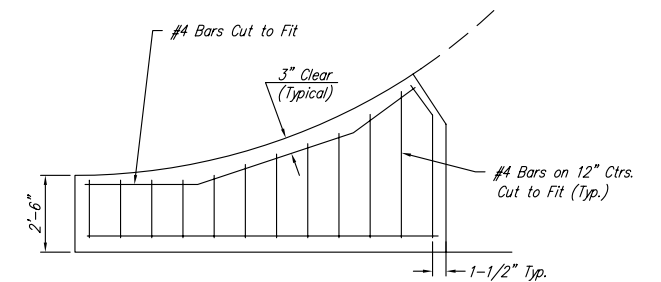


**SECTION A-A**

**REINFORCED VALLEY GUTTER DETAIL**



**SAW JOINT DETAIL**



**WING REINFORCING DETAIL**

|                            |                                   |                      |
|----------------------------|-----------------------------------|----------------------|
| <p>THE CITY OF WICHITA</p> | <b>VALLEY GUTTER DETAILS</b>      |                      |
|                            | JIM ARMOUR - ACTING CITY ENGINEER |                      |
|                            | PROJECT NUMBER<br>468-83716       | OCA NUMBER<br>765848 |
|                            | DATE<br>FEB 2004                  | SHEET 3 OF 25        |

CITY ENGINEER'S OFFICE  
 CITY HALL - SEVENTH FLOOR  
 455 NORTH MAIN STREET  
 WICHITA, KANSAS 67202  
 (316) 268-4501  
 (316) 268-4114 FAX