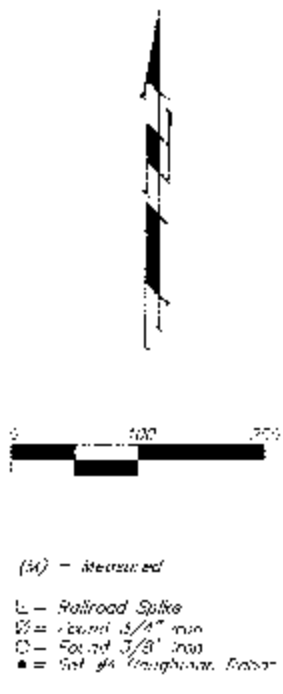


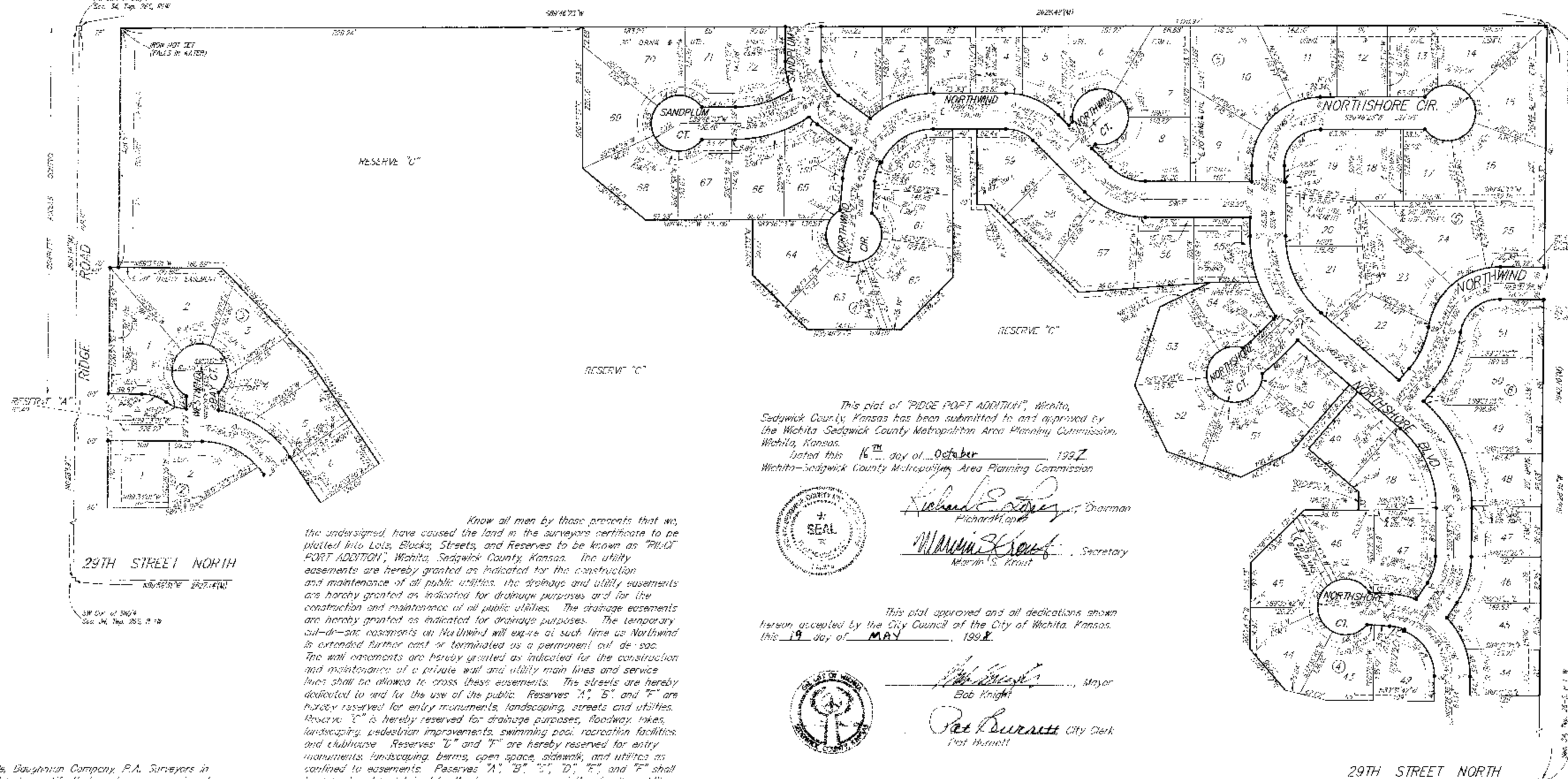
RIDGE PORT ADDITION

WICHITA, SEDGWICK COUNTY, KANSAS



MINIMUM BUILDING FOOT CLEAVANCE FOR LOT-SHEDS OR SHEDS

HEIGHT	MINIMUM CLEARANCE	MINIMUM CLEARANCE
10 FT.	5 FT.	5 FT.
12 FT.	5 FT.	5 FT.
14 FT.	5 FT.	5 FT.
16 FT.	5 FT.	5 FT.
18 FT.	5 FT.	5 FT.
20 FT.	5 FT.	5 FT.



Know all men by these presents that we, the undersigned, have caused the land in the survey certificate to be plotted into Lots, Blocks, Streets, and Reserves to be known as "RIDGE PORT ADDITION", Wichita, Sedgwick County, Kansas. The utility easements are hereby granted as indicated for the construction and maintenance of all public utilities, the drainage and utility easements are hereby granted as indicated for drainage purposes and for the construction and maintenance of all public utilities. The drainage easements are hereby granted as indicated for drainage purposes. The temporary easements are hereby granted as indicated for the construction and maintenance of a private well and utility main lines and service lines that are necessary to cross these easements. The streets are hereby dedicated to and for the use of the public. Reserves "A", "B", "C", "D", "E", "F", and "G" are hereby reserved for entry monuments, landscaping, streets and utilities. Reserve "A" is hereby reserved for drainage purposes, roadway, landscaping, landscaping improvements, swimming pool, recreation facilities, and utilities. Reserves "B", "C", "D", "E", "F", and "G" are hereby reserved for entry monuments, landscaping, streets and utilities. Reserve "A" is hereby reserved for drainage purposes, roadway, landscaping, landscaping improvements, swimming pool, recreation facilities, and utilities. Reserves "B", "C", "D", "E", "F", and "G" are hereby reserved for entry monuments, landscaping, streets and utilities.

This plat of "RIDGE PORT ADDITION", Wichita, Sedgwick County, Kansas has been submitted to and approved by the Wichita-Sedgwick County Metropolitan Area Planning Commission, Wichita, Kansas, on this 16th day of October, 1992. Wichita-Sedgwick County Metropolitan Area Planning Commission

Richard E. ... Chairman
William ... Secretary

This plat approved and all dedications shown herein accepted by the City Council of the City of Wichita, Kansas, this 19th day of MAY, 1992.

Bob Knight Mayor
Pat Burnett City Clerk

We the undersigned, holders of a mortgage on the above described property, do hereby consent to this plat of "RIDGE PORT ADDITION", Wichita, Sedgwick County, Kansas.

The First National Bank
Chris A. Anderson Branch President

State of Kansas) ss The foregoing instrument acknowledges before me this 26th day of MARCH, 1992, by *Chris A. Anderson*, Branch President of The First National Bank, on behalf of the bank.

Judith M. Seckman Notary Public

State of Kansas) ss The foregoing instrument acknowledges before me this 20th day of JANUARY, 1992, by *Jay W. Russell*, Member of RRDAL, L.L.C., on behalf of the company.

Judith M. Seckman Notary Public

of June, 1992 entered on transfer record this 8th day
James Jford Commissioner

State of Kansas) ss This is to certify that this plat has been filed for record in the office of the Register of Deeds, this 8th day of June, 1992, at 3:30 o'clock P.M. and is duly recorded.

Bill Mow Register of Deeds
Linda Kuzma Deputy

State of Kansas) ss We, Daughman Company, P.A. Surveyors in Sedgwick County and State do hereby certify that we have surveyed and plotted "RIDGE PORT ADDITION", Wichita, Sedgwick County, Kansas and that the accompanying plat is a true and correct exhibit of the property surveyed, described as follows: The SW 1/4 of Sec. 34, Twp. 26-S, R. 18-W of the 5th P.M., Sedgwick County, Kansas. From the Missouri-Pacific Railroad right-of-way, and thence that part lying south and west of said railroad right-of-way, and thence that part lying east and south 50 feet thereof dedicated for roads.

Existing public easements and dedications being vacated by virtue of K.S.A. 12-512(f).

Daughman Company, P.A.

Michael B. ... 1-19-98 Surveyor
Donald C. ...

RRDAL, L.L.C.
Jay W. Russell Member

1697441

DAUGHMAN COMPANY P.A.
ENGINEERS, SURVEYORS & PLANNERS

40.00 ck