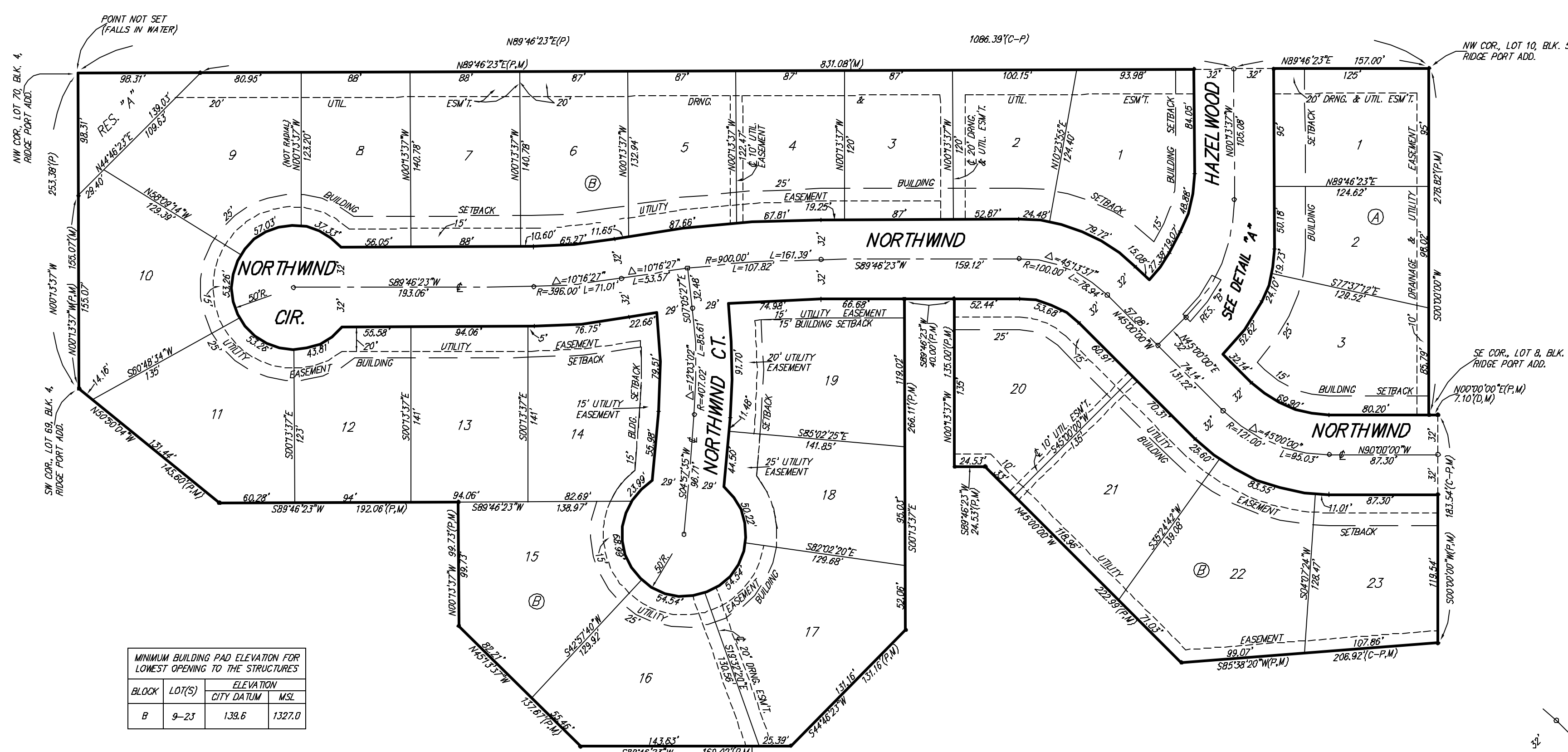


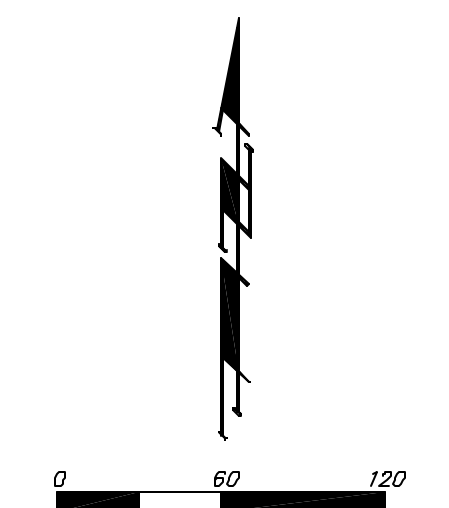
# RIDGE PORT 3RD ADDITION WICHITA, SEDGWICK COUNTY, KANSAS



BLOCK	LOT(S)	ELEVATION CITY DATUM	MSL
B	9-23	138.6	1327.0

**BENCHMARK:**  
CITY DISC - SW COR. RIDGE RD. & 29TH ST. NO. 80.0' S. & 63.7' W. OF E. BOTH.  
ELEV. = 138.15 CITY DATUM (1326.55 M.S.L.)

**CITY DISC - SW HUB QUARD ON R.C.B.C.**  
1/2 MI. N. OF 29TH ST. NO. & RIDGE RD.  
ELEV. = 144.22 CITY DATUM (1331.62 M.S.L.)

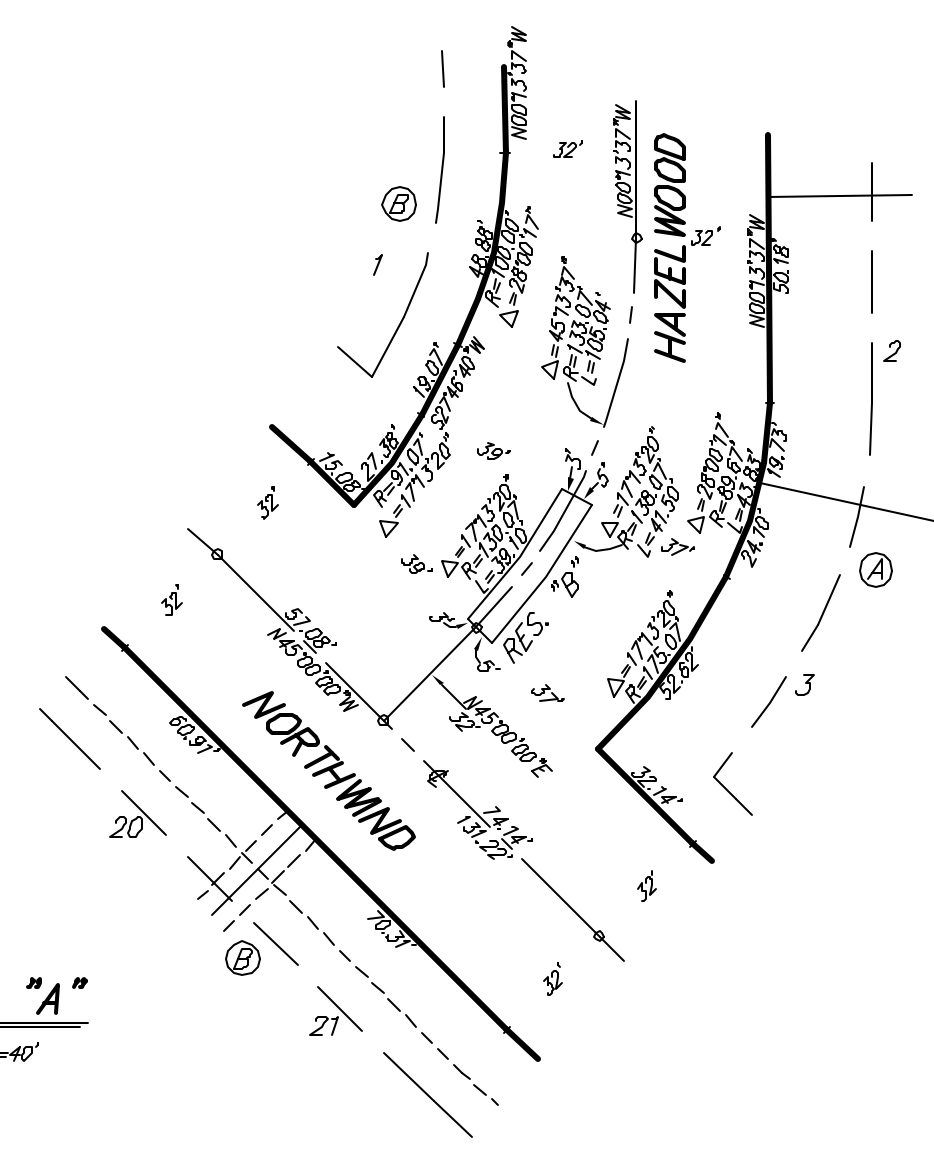


• = #4 REBAR W/ "BAUGHMAN" CAP (SET)

(M) = MEASURED  
(P) = PLATTED  
(D) = DESCRIBED  
(C-P) = CALCULATED PER PLATTED INFO.

**NOTE:**  
PERMETER BOUNDARY CORNERS HAVE BEEN SET. INTERNAL CONTROL POINTS ARE TO BE SET UPON COMPLETION OF SITE FILL WORK.

**NOTE:**  
A MASTER GRADING PLAN FOR DRAINAGE HAS BEEN DEVELOPED FOR THIS SUBDIVISION AND IS ON FILE WITH THE CITY OF WICHITA, KANSAS. ALL DRAINAGE EASEMENTS, RIGHTS-OF-WAY, OR RESERVES SHALL REMAIN AT ESTABLISHED GRADES OR AS MODIFIED WITH THE APPROVAL OF THE CITY ENGINEER OF THE CITY OF WICHITA, KANSAS. NO DISTRIBUTIONS WHICH IMPERE THE FLOW OF THIS DRAINAGE SYSTEM SHALL BE ALLOWED.



State of Kansas) SS We, Baughman Company, P.A., Surveyors in Sedgwick County) do hereby certify that we have surveyed and platted "RIDGE PORT 3RD ADDITION", Wichita, Sedgwick County, Kansas and that the accompanying plat is a true and correct exhibit of the property surveyed, described as and being a replat of all of Lots 56, 57, 58, 59, 60, 61, 62, 63, 64, 65, 66, 67, 68, 69, 70, 71, and 72, Block 4, Ridge Port Addition, Wichita, Sedgwick County, Kansas, together with all of Lots 1, 2, 3, 4, 5, 6, 7, and 8, Block 5, in said Ridge Port Addition, together with all of Sandalum, Sandalum Ct., Northwind Ct., and Northwind Cir. as dedicated in said Ridge Port Addition lying between said Lots, and together with that part of Northwind as dedicated in said Ridge Port Addition lying west of the following described line: Beginning at the NE corner of Lot 56 in said Block 4; thence N00°00'00"E along the east line of said lot 56, as extended north, 64.00 feet to a point on the north line of said Northwind, said point being 7.10 feet east of the SE corner of Lot 8 in said Block 5, and there ending.

Existing easements and dedications being vacated by virtue of K.S.A. 12-512(b).  
All being situated in the SW1/4 of Sec. 34, Twp. 26-S,  
R-1-W of the 6th P.M., Sedgwick County, Kansas  
Baughman Company, P.A.

\_\_\_\_\_, Surveyor  
Michael G. Conrey

Know all men by these presents that we, the undersigned, have caused the land in the surveyors certificate to be platted into Lots, Blocks, Streets, and Reserves to be known as "RIDGE PORT 3RD ADDITION", Wichita, Sedgwick County, Kansas. The utility easements are hereby granted as indicated for the construction and maintenance of all public utilities. The drainage easement is hereby granted as indicated for drainage purposes. The drainage and utility easements are hereby granted as indicated for drainage purposes and for the construction and maintenance of all public utilities. The streets are hereby dedicated to and for the use of the public. Reserve "A" is hereby reserved for drainage purposes, roadway, lakes, landscaping, pedestrian improvements, and open space. Reserve "B" is hereby reserved for entry monuments, landscaping, streets, and utilities. Reserves "A" and "B" shall be owned and maintained by the homeowners association for the addition. The Minimum Building Pad Elevations for the lowest opening to the structures shall be as indicated on the face of the plat.

RRGNL, L.L.C.  
\_\_\_\_\_, Member  
Jay W. Russell

State of Kansas) SS The foregoing instrument acknowledged before me, this \_\_\_\_\_ day of \_\_\_\_\_, 2000, by Jay W. Russell, Member of RRGNL, L.L.C., on behalf of the company.

\_\_\_\_\_, Notary Public  
My App't. Exp. \_\_\_\_\_

We the undersigned, holders of a mortgage on the above described property, do hereby consent to this plat of "RIDGE PORT 3RD ADDITION", Wichita, Sedgwick County, Kansas.  
The First National Bank

\_\_\_\_\_, Branch President  
Chris A. Anderson

State of Kansas) SS The foregoing instrument acknowledged before me, this \_\_\_\_\_ day of \_\_\_\_\_, 2000, by Chris A. Anderson, Branch President of The First National Bank, on behalf of the bank.

\_\_\_\_\_, Notary Public  
My App't. Exp. \_\_\_\_\_

This plat of "RIDGE PORT 3RD ADDITION", Wichita, Sedgwick County, Kansas has been submitted to and approved by the Wichita-Sedgwick County Metropolitan Area Planning Commission, Wichita, Kansas.  
Dated this \_\_\_\_\_ day of \_\_\_\_\_, 2000.  
Wichita-Sedgwick County Metropolitan Area Planning Commission

\_\_\_\_\_, Chairman  
Francis S. Garofalo

\_\_\_\_\_, Secretary  
Marvin S. Krout

This plat approved and all dedications shown herein accepted by the City Council of the City of Wichita, Kansas, this \_\_\_\_\_ day of \_\_\_\_\_, 2000.

\_\_\_\_\_, Mayor  
Bob Knight

\_\_\_\_\_, City Clerk  
Pat Burnett

Reviewed in accordance with K.S.A. 58-2005 on this \_\_\_\_\_ day of \_\_\_\_\_, 2000.

\_\_\_\_\_, Deputy County Surveyor  
Tricia L. Robello, L.S. #1246  
Sedgwick County, Kansas

Entered on transfer record this \_\_\_\_\_ day of \_\_\_\_\_, 2000.

\_\_\_\_\_, County Clerk  
James Alford

State of Kansas) SS This is to certify that this plat has been filed for record in the office of the Register of Deeds, this \_\_\_\_\_ day of \_\_\_\_\_, 2000, at \_\_\_\_\_ o'clock \_\_\_\_\_ M., and is duly recorded.

\_\_\_\_\_, Register of Deeds  
Bill Meek

\_\_\_\_\_, Deputy  
Linda Kizzire

