

GENERAL NOTES

- UNDERGROUND UTILITY SERVICE LINES AND OVERHEAD UTILITY POLE LINES ARE TO BE ADJUSTED AS NECESSARY BY OTHERS PRIOR TO CONSTRUCTION UNLESS THE PLANS SPECIFICALLY CALL FOR THEIR ADJUSTMENT BY THE CONTRACTOR. EXISTING UTILITIES AND THEIR LOCATION, AS SHOWN ON THE PLANS, REPRESENT THE BEST INFORMATION OBTAINABLE FOR DESIGN. LOCATION INFORMATION HAS BEEN OBTAINED FROM THE VARIOUS UTILITY COMPANIES AND IS EITHER FROM COMPANY RECORD DRAWINGS OR COMPANY PROVIDED FIELD LOCATIONS. THE CONTRACTOR WILL BE REQUIRED TO WORK AROUND EXISTING UTILITIES WITHIN THE RIGHT-OF-WAY WHICH DO NOT CONFLICT WITH PROPOSED CONSTRUCTION.
- TREES AND SHRUBS IN PUBLIC RIGHT-OF-WAY WHICH ARE IN DIRECT CONFLICT WITH PROPOSED NEW CONSTRUCTION SHALL BE REMOVED BY THE CONTRACTOR, WITH THE ENGINEER'S APPROVAL. TREES AND SHRUBS WHICH ARE NOT IN DIRECT CONFLICT WITH PROPOSED NEW CONSTRUCTION SHALL BE SAVED AND PROTECTED FROM DAMAGE.
- RUBBLE FROM THE REMOVAL OF MISCELLANEOUS STRUCTURES SHALL BE DISPOSED OF ON SITES TO BE PROVIDED BY THE CONTRACTOR AND APPROVED AS NOTED BELOW.

ALL DISPOSAL SITES MUST BE APPROVED BY THE KANSAS DEPARTMENT OF HEALTH AND ENVIRONMENT. MATERIAL EITHER STOCKPILED OR DISPOSED OF IN A FLOOD PLAIN WOULD REQUIRE A KANSAS STATE BOARD OF AGRICULTURE PERMIT. ANY MATERIAL DUMPED IN WATERS OF THE UNITED STATES OR WETLANDS IS SUBJECT TO U.S. CORPS OF ENGINEERS PERMITTING REGULATIONS. ANY MATERIAL BURIED OR STOCKPILED BEYOND APPROVED CONSTRUCTION LIMITS WOULD REQUIRE ADDITIONAL ARCHEOLOGICAL INVESTIGATIONS UNLESS BURIED IN A PREVIOUSLY APPROVED BORROW LOCATION.

- CONTRACTOR SHALL SATISFY HIMSELF OF SURFACE AND SUBSURFACE CONDITIONS PRIOR TO BIDDING.
- TEMPORARY SURFACING MATERIAL (ROCK, ASPHALT, ETC.) MAY HAVE BEEN PLACED WITHIN STREET RIGHTS-OF-WAY FOR HAUL ROADS AND TEMPORARY ACCESS. CONTRACTOR SHALL FIELD VERIFY EXISTING CONDITIONS TO DETERMINE EXTENT, IF ANY, OF SUCH SURFACING. CONTRACTOR SHALL REMOVE SAID TEMPORARY SURFACING IN THE SAME MANNER AS NOTED ABOVE FOR RUBBLE. THIS REMOVAL SHALL BE SUBSIDIARY TO "EXCAVATION".
- CONTRACTOR SHALL PROVIDE A MINIMUM FORTY-EIGHT (48) HOUR ADVANCE NOTICE (EXCLUDING WEEKENDS AND HOLIDAYS) PRIOR TO BEGINNING ANY EXCAVATION, TO KANSAS ONE-CALL SYSTEM, A UTILITY LOCATION SERVICE, AT (316) 687-2470 TO REQUEST THE FOLLOWING UTILITY COMPANIES TO LOCATE ALL EXISTING LINES WITHIN THE PROJECT AREA: K.G.S. GAS, WESTAR ELECTRIC, SBC, COX COMMUNICATIONS, CITY OF WICHITA SEWER MAINTENANCE AND CITY OF WICHITA WATER DEPARTMENT.
- THE CONTRACTOR SHALL BE RESPONSIBLE FOR PRESERVING PROPERTY IRONS. THE CONTRACTOR WILL BE REQUIRED TO RE-ESTABLISH ANY PROPERTY IRONS WHICH ARE DAMAGED OR DESTROYED BY HIS CONSTRUCTION OPERATIONS. SUCH IRONS SHALL BE RE-ESTABLISHED BY A LICENSED LAND SURVEYOR IN ACCORDANCE WITH STATE LAWS.
- THE WATER DEPARTMENT SHALL FIELD LOCATE WATER VALVES ONE TIME DURING CONSTRUCTION WHEN REQUESTED BY THE CONTRACTOR. IT SHALL BE THE CONTRACTOR'S RESPONSIBILITY TO PRESERVE SUCH FIELD LOCATIONS DURING THE CONSTRUCTION PROCESS. WATER VALVES, WATER VALVE BOXES OR FIRE HYDRANTS DAMAGED DURING CONSTRUCTION SHALL BE REPAIRED BY THE CONTRACTOR AT HIS OWN EXPENSE.
- THE CONTRACTOR SHALL ADJUST WATER VALVE BOXES AS DIRECTED BY THE ENGINEER. THIS WORK TO BE SUBSIDIARY TO OTHER BID ITEMS.
- INLET HOOKUPS AND INLET PROTECTION SHALL BE BID PER EACH REGARDLESS OF INLET SIZE.
- THIS PROJECT DOES NOT INCLUDE ANY PROVISIONS FOR CONSTRUCTION OF DRIVEWAYS.
- THE CONTRACTOR SHALL APPLY TEMPORARY SEED AND MULCH TO ALL UNPAVED AREAS DISTURBED BY HIS CONSTRUCTION OPERATIONS IN ACCORDANCE WITH THE STANDARD SPECIFICATIONS. SEED SHALL BE ANNUAL RYE APPLIED AT THE RATE OF 4 LBS. PER 1,000 SQUARE FEET. MULCH SHALL BE PRAIRIE HAY APPLIED AT THE RATE OF 15 BALES PER ACRE. THIS WORK SHALL BE PAID FOR AT THE CONTRACT LUMP SUM PRICE BID FOR "TEMPORARY PROJECT SEEDING".
- EROSION CONTROL (BMP'S)
THE CONTRACTOR SHALL INSTALL AND/OR MAINTAIN EROSION CONTROL METHODS AS SPECIFIED ON SHEET 14. THE FOLLOWING QUANTITIES ARE ESTIMATED, AND SHOULD BE CONSIDERED THE MINIMUM EFFORT REQUIRED. INSTALLATION OF THESE BMP'S DOES NOT RELIEVE THE CONTRACTOR OF THE RESPONSIBILITY OF ABATING SOIL EROSION.

CURB INLET PROTECTION	6 EACH
CONSTRUCTION ENTRANCE	1 EACH
BACK OF CURB PROTECTION	5,160 L.F.
SILT FENCE BARRIER	3,087 L.F.
AREA INLET PROTECTION	10 EACH

- STORM WATER SEWERS ON THIS PROJECT, EXCEPT THOSE INSTALLED UNDER PAVEMENT, MAY BE CONSTRUCTED OF ONE OF THE FOLLOWING ALTERNATE PIPE MATERIALS:

- REINFORCED CONCRETE PIPE (RCP)
- HIGH DENSITY POLYETHYLENE PIPE (HDPE)
- POLY VINYL CHLORIDE PIPE (PVC)
- ALUMINIZED STEEL SMOOTH-FLOW PIPE (SFP)

ONLY RCP WILL BE ALLOWED UNDER PAVEMENT.

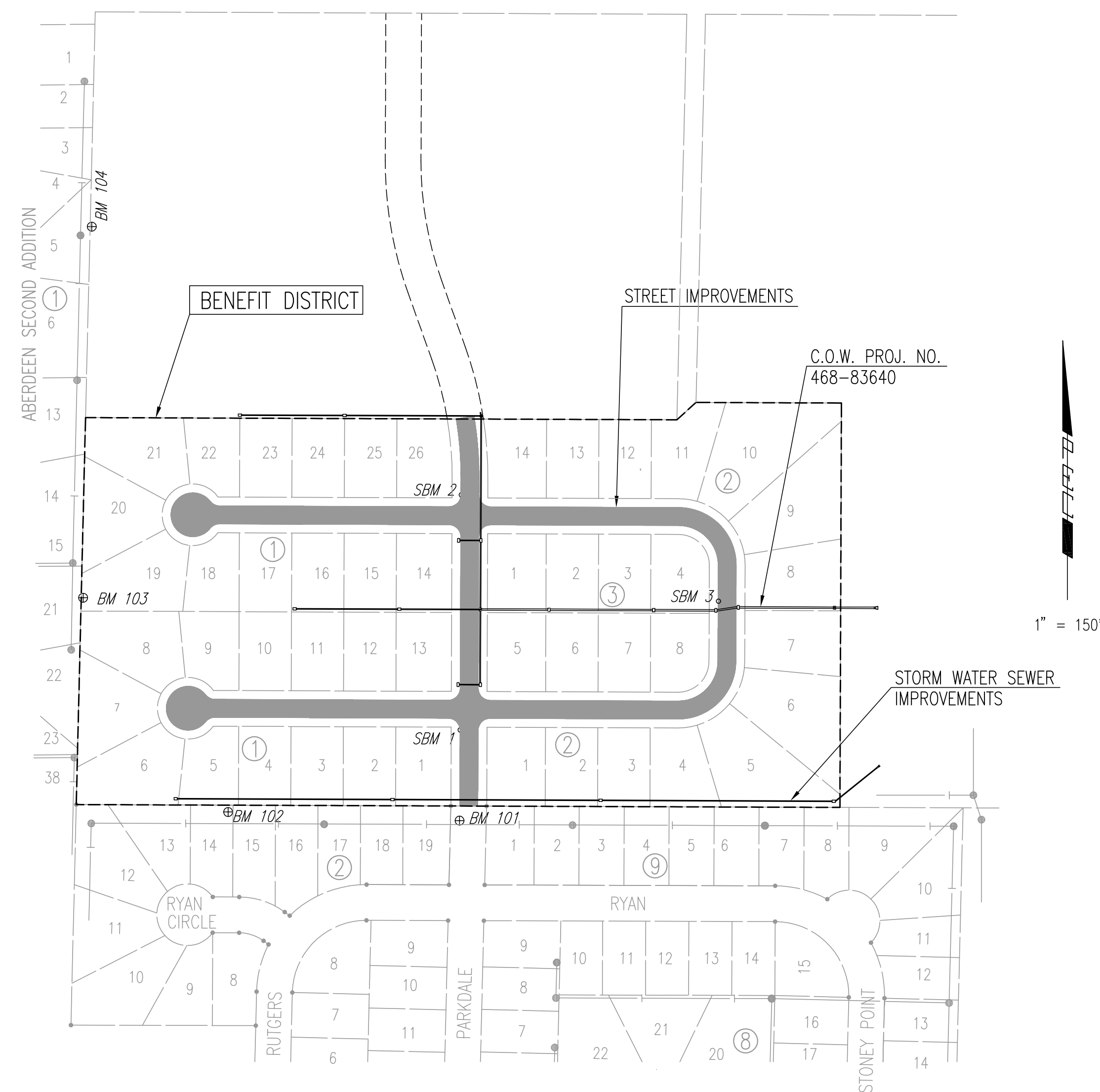
RCP SHALL BE FURNISHED AND INSTALLED IN ACCORDANCE WITH CITY OF WICHITA SPECIFICATIONS FOR STORM SEWERS AND DRAINAGE.

HDPE PIPE, JOINTS, AND FITTINGS SHALL BE MANUFACTURED FROM VIRGIN HDPE RESIN, IN ACCORDANCE WITH THE REQUIREMENTS OF AASHTO M294 TYPE S. INSTALLATION SHALL BE PERFORMED IN ACCORDANCE WITH THE REQUIREMENTS OF ASTM D-2321.

SFP SHALL BE ALUMINIZED STEEL TYPE 2 SPIRAL RIB PIPE MANUFACTURED IN ACCORDANCE WITH AASHTO M36, EXCEPT THAT THE EXTERNAL HELICAL CORRUGATION PATTERN OF THE PIPE SHALL BE 3/4 IN. X 3/4 IN. X 7 1/2 IN. AS DESCRIBED IN AASHTO M196. ALL PIPES TO BE MANUFACTURED FROM 16 GAUGE MATERIAL AND SHALL CONFORM TO THE TYPE IR CLASSIFICATION. CONNECTING METAL AND INSTALLATION METHODS SHALL BE IN ACCORDANCE WITH REQUIREMENTS FOR CORRUGATED METAL PIPE IN CITY OF WICHITA STANDARD SPECIFICATIONS FOR STORM SEWERS AND DRAINAGE.

PVC PIPE FOR DIAMETERS 12 INCHES THROUGH 18 INCHES INCLUSIVE SHALL BE FURNISHED AND INSTALLED IN ACCORDANCE WITH CITY OF WICHITA STANDARD SPECIFICATIONS FOR SANITARY SEWERS. PVC PIPE FOR DIAMETERS 21 INCHES THROUGH 48 INCHES INCLUSIVE SHALL BE FURNISHED AND INSTALLED IN ACCORDANCE WITH SUPPLEMENTAL SPECIFICATIONS TO CITY OF WICHITA, KANSAS STANDARD SPECIFICATIONS FOR CLOSED PROFILE PVC PIPE FOR SANITARY SEWER CONSTRUCTION.

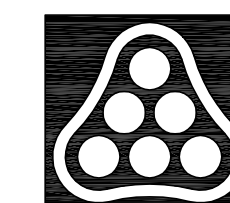
THE CONTRACTOR SHALL PROVIDE A MATERIAL CERTIFICATION TO THE ENGINEER FOR APPROVAL PRIOR TO PIPE INSTALLATION STATING THAT ALL MATERIALS USED CONFORM TO THE APPLICABLE SPECIFICATIONS.



BENCH MARKS

- BM 101 - CHISELED "G" ON TOP WEST CURB ON PARKDALE ST. 100' NORTH OF RYAN ST. OPPOSITE ELECTRIC BOX. ELEV. = 168.47
- BM 102 - STEP SPIKE NAILS EAST FACE 10" ELM TREE NEAR THE SOUTHWEST CORNER LOT 4, BLOCK 1, EVERGREEN 4TH. ADD. ELEV. = 175.77
- BM 103 - 60D NAIL IN EAST FACE OF 4TH POWER POLE SOUTH OF 29TH ST. NEAR THE NORTHWEST CORNER LOT 8, BLOCK 1, EVERGREEN 4TH ADDITION. ELEV. = 176.06
- BM 104 - 60D NAIL IN EAST FACE OF 2ND POWER POLE SOUTH OF 29TH ST. AT THE REAR OF LOT 5, BLOCK 1, ABERDEEN SECOND ADDITION. ELEV. = 177.03

DSNR: BDB OPER: BJS SCALE: 1"=150.00
 Q:\2003\03123\000\KEYMAP 02-04-2004 02:50:55 pm



No.	Revision	By	Date
	EVERGREEN 4TH		
KEY MAP AND GENERAL NOTES JAMES L. ARMOUR, P.E. - ACTING CITY ENGINEER CITY OF WICHITA PROJECT NO. 472-83782 Professional Engineering Consultants, P.A. 303 S. TOPEKA • WICHITA, KANSAS 67202 316-262-2691 • FAX 316-262-3003			
Designed by	BDB	Job No.	35-03123
Drawn by	BJS	Date	MARCH 2003
			Sht. 2 of 44