

Q CURVE DATA
 $A=19^{\circ}50'46''$ $D=9^{\circ}32'57.5''$ $R=600.00'$ $L=207.83'$ $T=104.97'$ $E=9.11'$
 CURVE DATA BASED ON Q radius $d/2=9^{\circ}55'23''$

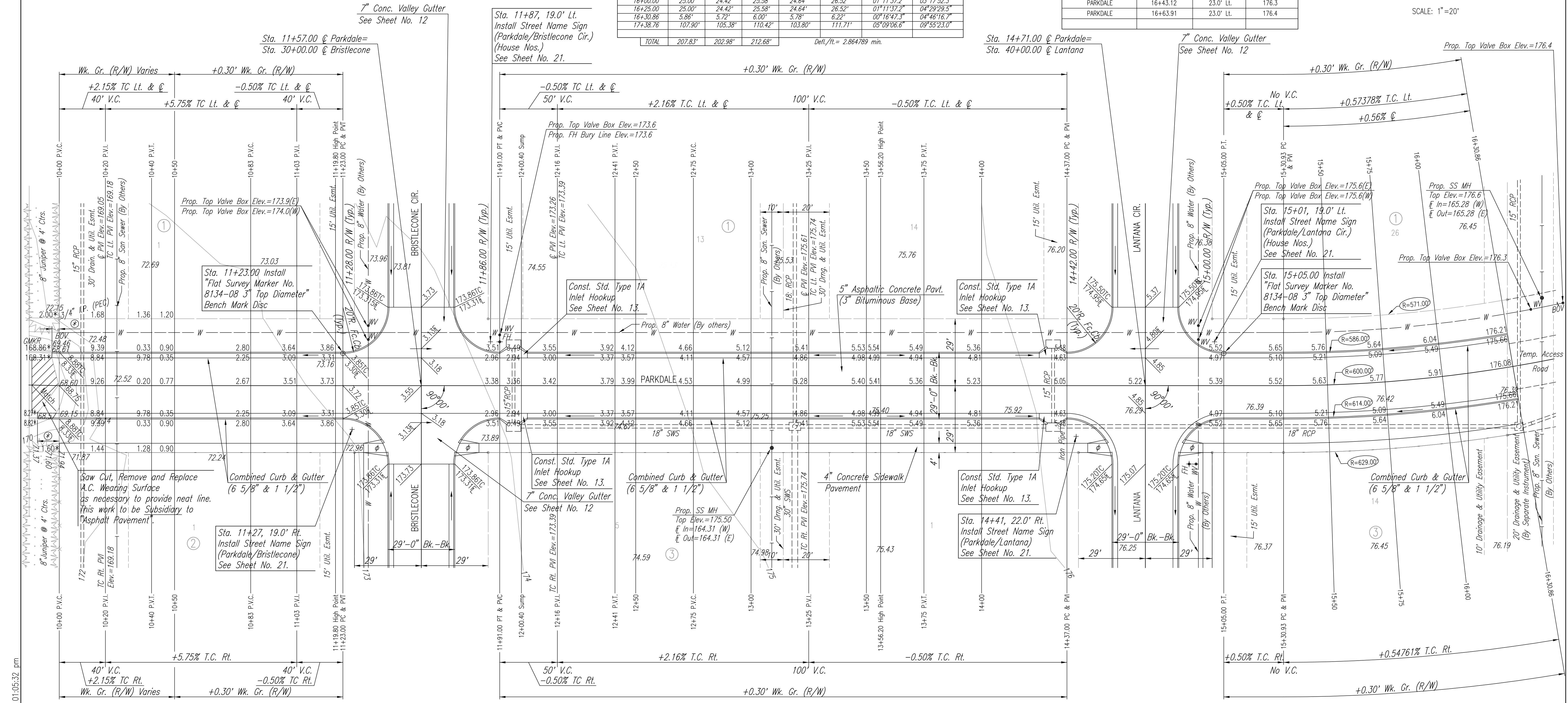
Q STATION	Q ARC LENGTH	FACE CURB LENGTH LEFT CURB	FACE CURB LENGTH RIGHT CURB	CHORD LENGTH 8' OFF LEFT FACE CURB	CHORD LENGTH 8' OFF RIGHT FACE CURB	DEFLECTION ANGLE	Q TOTAL DEFLECTION
15+30.93						0°00'00.0"	0°00'00.0"
15+50.00	19.07'	18.63'	19.51'	18.80'	20.23'	00°54'37.9"	00°54'37.9"
15+75.00	25.00'	24.42'	25.58'	24.64'	26.52'	01°11'37.2"	02°06'15.1"
16+00.00	25.00'	24.42'	25.58'	24.64'	26.52'	01°11'37.2"	03°17'52.3"
16+25.00	25.00'	24.42'	25.58'	24.64'	26.52'	01°11'37.2"	04°29'29.5"
16+30.86	5.86'	5.72'	6.00'	5.78'	6.22'	00°16'47.3"	04°46'16.7"
17+38.76	107.90'	105.38'	110.42'	103.80'	111.71'	05°09'06.6"	08°55'23.0"
TOTAL	207.83'	202.98'	212.68'				

Defl./ft. = 2.864789 min.

WATER VALVE BOX ELEVATIONS

STREET	STATION	OFFSET	PROPOSED ELEVATION
PARKDALE	11+80.00	20.0' Lt.	173.9
PARKDALE	11+80.00	26.0' Lt.	174.0
PARKDALE	11+91.00	22.0' Lt.	173.6
PARKDALE	14+94.00	20.0' Lt.	175.6
PARKDALE	14+94.00	26.0' Lt.	175.6
PARKDALE	16+43.12	23.0' Lt.	176.3
PARKDALE	16+63.91	23.0' Lt.	176.4

SCALE: 1"=20'



- * MATCH EXISTING
- φ CONSTRUCT STD. WHEELCHAIR RAMP
- ⊕ TRANSITION FROM COMBINED CURB AND GUTTER (3 5/8" ROLL & 1 1/2") TO COMBINED CURB AND GUTTER (6 5/8" & 1 1/2"). TO BE BID AND PAID FOR AS "COMBINED CURB AND GUTTER (6 5/8" & 1 1/2)".

DSNR: BDB OPER: BJS SCALE: 1"=20.00
 03/2003/03123/0001/STR10-16 02-03-2004
 01:05:32 pm

No.	Revision	By	Date
	EVERGREEN 4TH		
	PARKDALE		
	STA. 10+00 TO STA. 16+30.86		
	JAMES L. ARMOUR, P.E.—ACTING CITY ENGINEER CITY OF WICHITA PROJECT NO. 472-83782		
	Professional Engineering Consultants, P.A. 303 S. TOPEKA • WICHITA, KANSAS 67202 316-262-2691 • FAX 316-262-3003		
Designed by	BDB, BLB	Job No.	35-03123
Drawn by	BJS	Date	MARCH 2003
			Sht. 5 of 44

