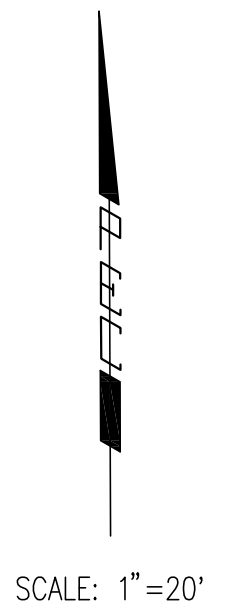
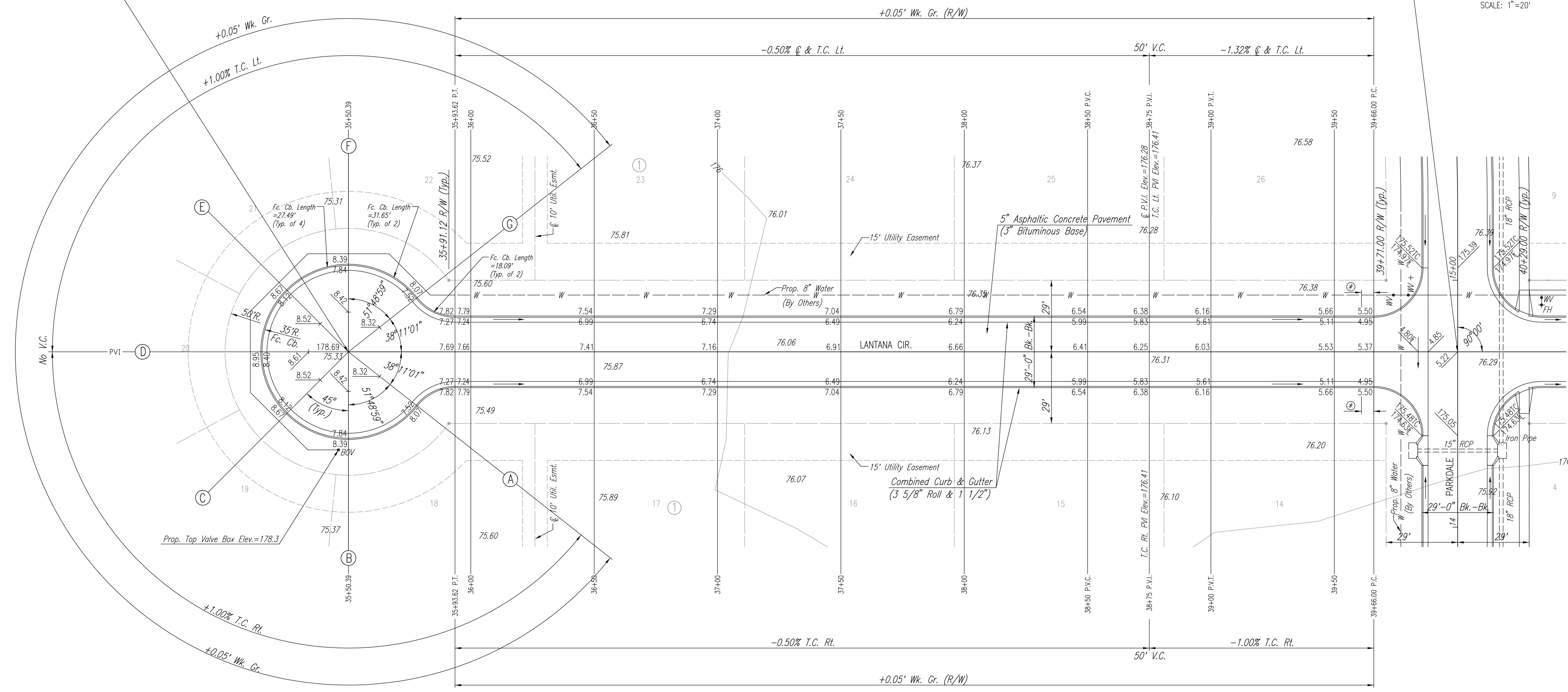


WATER VALVE BOX ELEVATIONS			
STREET	STATION	OFFSET	PROPOSED ELEVATION
PARKDALE COURT	35+46.37	39.73' Rt.	178.3



Sta. 35+50.39 @ Lantana Cir. =
Ctr. of Cul-de-sac

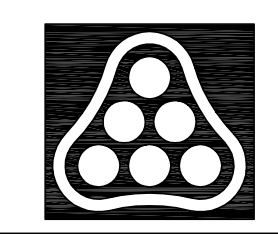
Sta. 40+00.00 @ Lantana Cir. =
Sta. 14+71.00 @ Parkdale



⊙ 5' TRANSITION FROM COMBINED CURB AND GUTTER (3 5/8" ROLL & 1 1/2") TO COMBINED CURB AND GUTTER (6 5/8" & 1 1/2"). TO BE BID AND PAID FOR AS "COMBINED CURB AND GUTTER (3 5/8" ROLL & 1 1/2)".

NOTE: THIS STREET TO BE CONSTRUCTED WITH ROLL-TYPE CURB. TOP OF CURB ELEVATIONS GIVEN ARE FOR FULL HEIGHT CURB.

DSNR: BDB OPER: BJS SCALE: 1"=20.00
03/2003\03123\000\STR35-40 02-04-2004 02:29:29 pm



No.	Revision	By	Date
	EVERGREEN 4TH		
LANTANA CIRCLE STA. 35+50.39 TO STA. 40+00			
JAMES L. ARMOUR, P.E.—ACTING CITY ENGINEER CITY OF WICHITA PROJECT NO. 472-83782			
Professional Engineering Consultants, P.A. 303 S. TOPEKA • WICHITA, KANSAS 67202 316-262-2691 • FAX 316-262-3003			
Designed by	BDB	Job No.	35-03123
Drawn by	BJS	Date	MARCH 2003
			Sht. 9 of 44