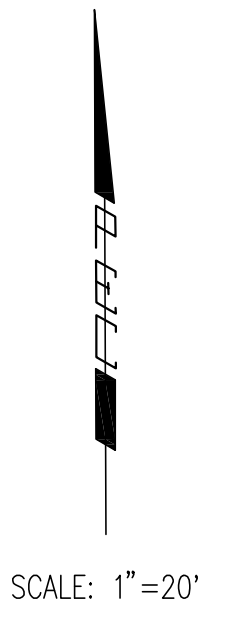
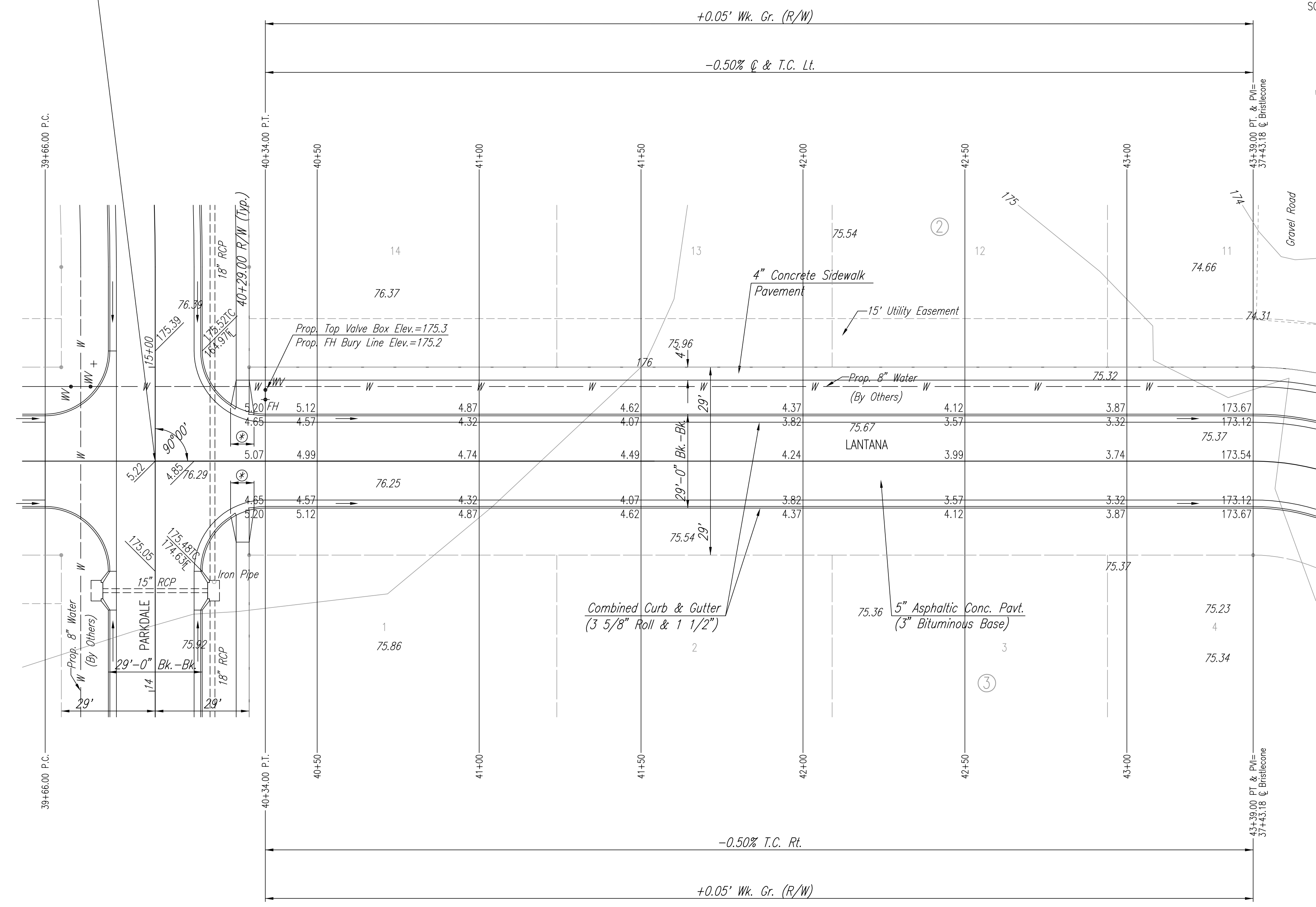


WATER VALVE BOX ELEVATIONS			
STREET	STATION	OFFSET	PROPOSED ELEVATION
LANTANA	40+34.00	22.0' Lt.	175.3



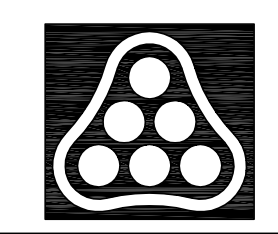
Sta. 40+00.00 @ Lantana=
Sta. 14+71.00 @ Parkdale



⊙ TRANSITION FROM COMBINED CURB AND GUTTER (6 5/8" & 1 1/2") TO COMBINED CURB AND GUTTER (3 5/8" ROLL & 1 1/2"). TO BE BID AND PAID FOR AS "COMBINED CURB AND GUTTER (3 5/8" ROLL & 1 1/2)".

NOTE: THIS STREET TO BE CONSTRUCTED WITH ROLL-TYPE CURB. TOP OF CURB ELEVATIONS GIVEN ARE FOR FULL HEIGHT CURB.

DSNR: BDB OPER: BJS SCALE: 1"=20'00
 Q:\2003\03123\000\STR40-44 02-04-2004 02:37:54 pm



No.	Revision	By	Date

EVERGREEN 4TH
LANTANA
 STA. 40+00 TO STA. 43+39.00
 JAMES L. ARMOUR, P.E.—ACTING CITY ENGINEER
 CITY OF WICHITA PROJECT NO. 472-83782

Professional Engineering Consultants, P.A.
 303 S. TOPEKA • WICHITA, KANSAS 67202
 316-262-2691 • FAX 316-262-3003

Designed by	BDB, BLB	Job No.	35-03123	Sht. 10 of 44
Drawn by	BJS	Date	MARCH 2003	