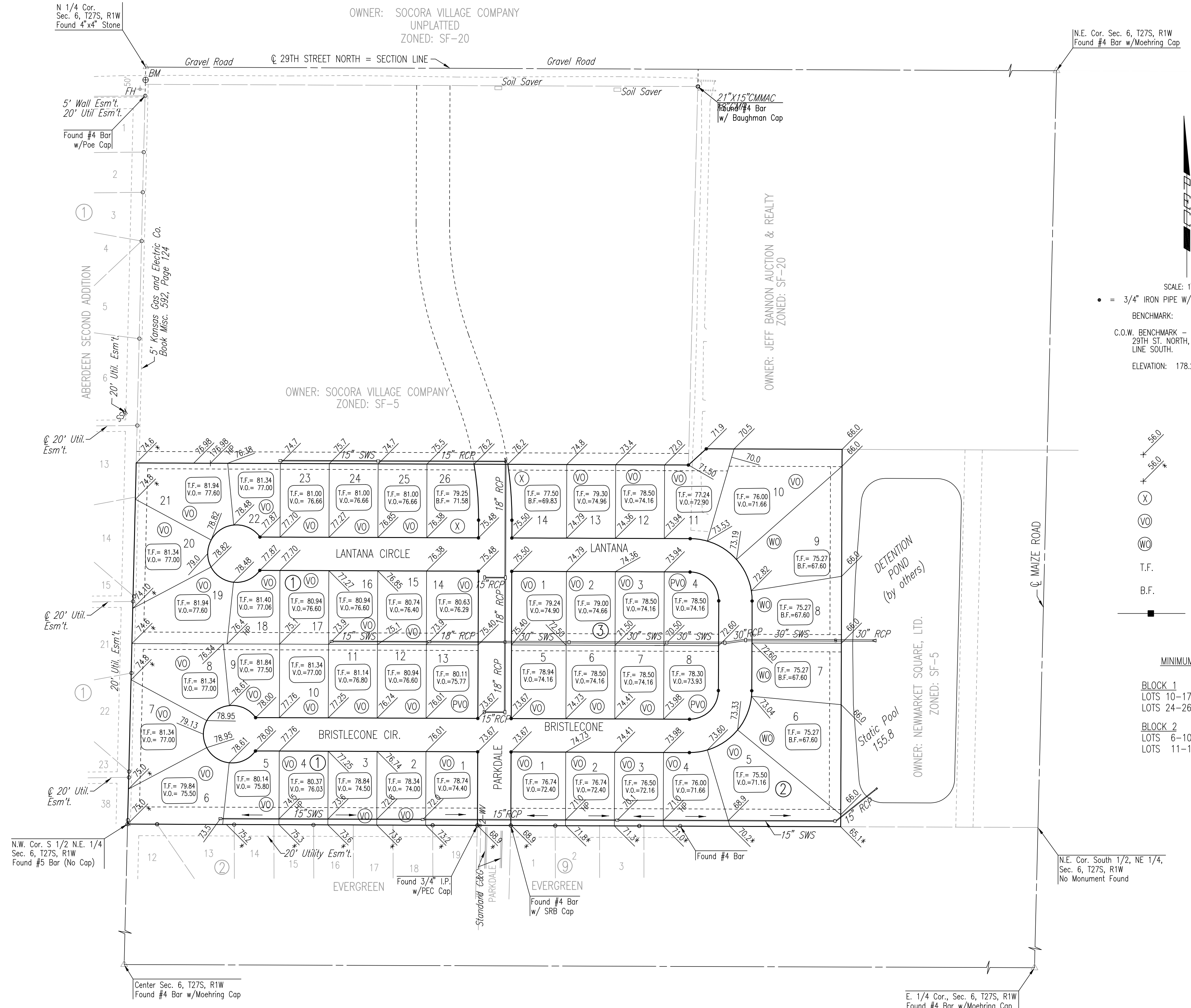


FOUR CORNER PLAN FOR  
**EVERGREEN 4TH**  
 AN ADDITION TO WICHITA, SEDGWICK COUNTY, KANSAS

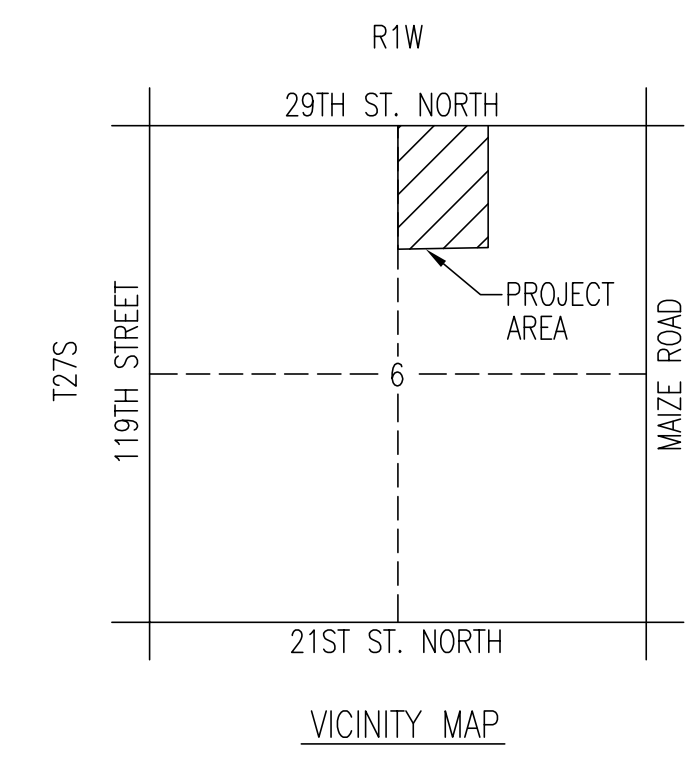


SCALE: 1"=100'  
 • = 3/4" IRON PIPE W/PEC CAP UNLESS OTHERWISE NOTED  
 BENCHMARK:  
 C.O.W. BENCHMARK - 0.5 MILES WEST OF MAIZE ROAD, ON  
 29TH ST. NORTH, SOUTH RIGHT-OF-WAY, ON POLE  
 LINE SOUTH.  
 ELEVATION: 178.29 CITY DATUM

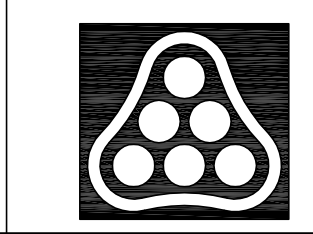
- LEGEND**
- ▲ SPOT ELEVATION
  - ↕ MATCH EXISTING ELEVATION
  - (X) STD. BASEMENT
  - (VO) VIEW-OUT BASEMENT
  - (WO) WALK-OUT BASEMENT
  - T.F. TOP OF FOUNDATION
  - B.F. BASEMENT FLOOR
  - STORM SEWER AND INLET

**MINIMUM OPENING**

<b>BLOCK 1</b>	
LOTS 10-17	170.40
LOTS 24-26	171.90
<b>BLOCK 2</b>	
LOTS 6-10	162.00
LOTS 11-14	171.90



DSNR: BDB OPER: BJS SCALE: 1"=100.00  
 Q:\2003\03123\000\4CORNER 02-03-2004 01:17:31 pm



No.	Revision	By	Date
EVERGREEN 4TH			
<b>4-CORNER LOT GRADING PLAN</b> (FOR INFORMATION ONLY)			
JAMES L. ARMOUR, P.E. - ACTING CITY ENGINEER CITY OF WICHITA PROJECT NO. 472-83782			
<b>Professional Engineering Consultants, P.A.</b> 303 S. TOPEKA • WICHITA, KANSAS 67202 316-262-2691 • FAX 316-262-3003			
Designed by	BDB	Job No.	35-03123
Drawn by	BJS	Date	MARCH 2003
			Sht. 19 of 44