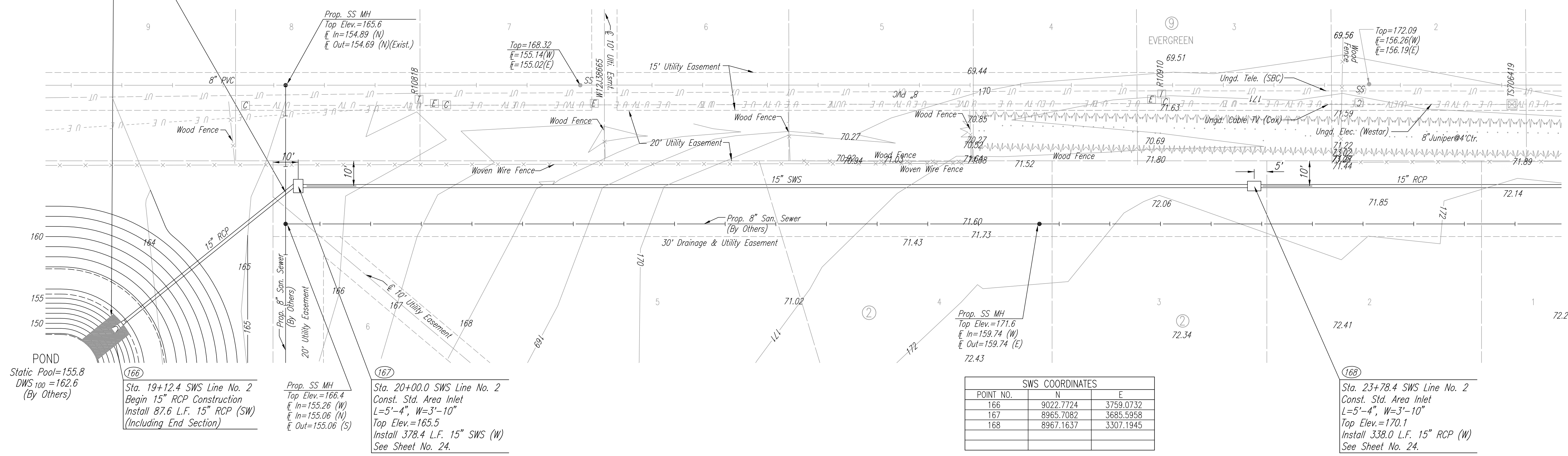


SCALE: 1"=20'

Install 22 S.Y. Light Stone Riprap See Sheet No. 24.

CAUTION !!! Prop. 8" San. Sewer (City of Wichita)



POND
Static Pool=155.8
DWS₁₀₀=162.6
(By Others)

Sta. 19+12.4 SWS Line No. 2
Begin 15" RCP Construction
Install 87.6 L.F. 15" RCP (SW)
(Including End Section)

Prop. SS MH
Top Elev.=166.4
In=155.26 (W)
In=155.06 (N)
Out=155.06 (S)

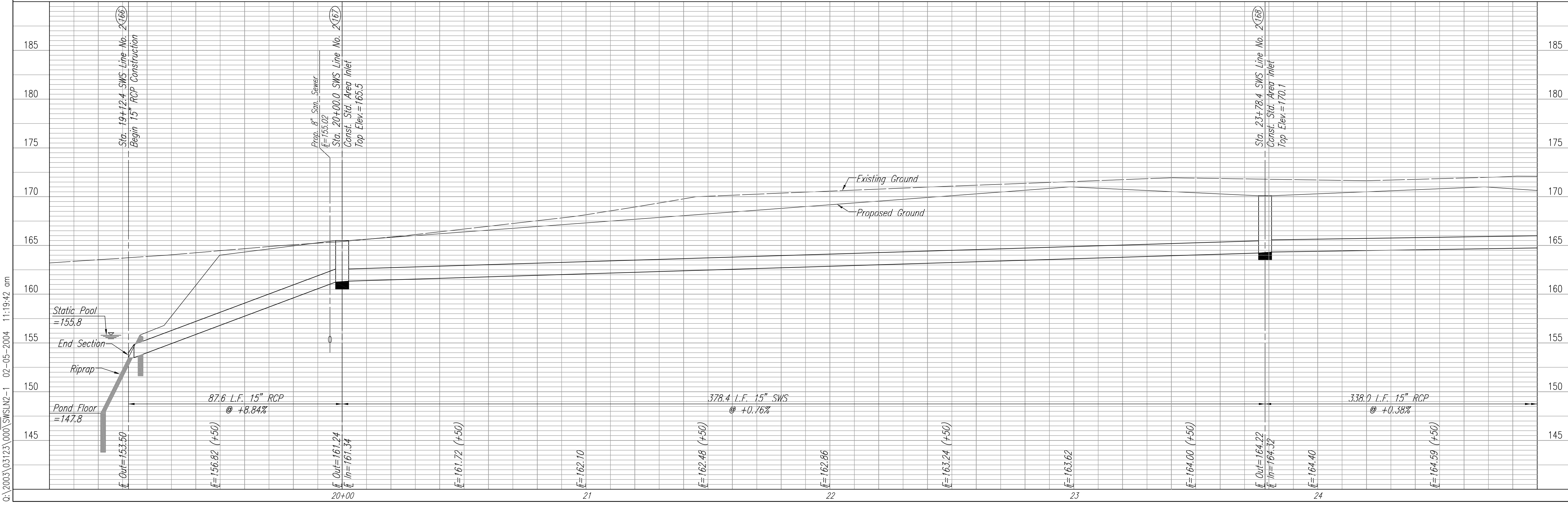
Sta. 20+00.0 SWS Line No. 2
Const. Std. Area Inlet
L=5'-4", W=3'-10"
Top Elev.=165.5
Install 378.4 L.F. 15" SWS (W)
See Sheet No. 24.

SWS COORDINATES		
POINT NO.	N	E
166	9022.7724	3759.0732
167	8965.7082	3685.5958
168	8967.1637	3307.1945

Sta. 23+78.4 SWS Line No. 2
Const. Std. Area Inlet
L=5'-4", W=3'-10"
Top Elev.=170.1
Install 338.0 L.F. 15" RCP (W)
See Sheet No. 24.

PROFILE	CHECKED	DATE

DSNR: BOB OPER: BUS SCALE: 1"=20.00
Q:\2003\03123\000\SWS\N2-1_02-05-2004 11:19:42 am



EVERGREEN 4TH

STORM WATER SEWER

JAMES L. ARMOUR, P.E.—ACTING CITY ENGINEER
CITY OF WICHITA PROJECT NO. 472-83782

Professional Engineering Consultants, P.A.
303 S. TOPEKA • WICHITA, KANSAS 67202
316-262-2691 • FAX 316-262-3003

Designed By: BOB
Drawn By: BUS
Job No.: 35-03123
Date: March 2003

Sheet 22 of 44