

SCALE: 1"=20'

Install 33.0 L.F. Excavatable Flowable Fill to Elev. 167.7

CAUTION!!! Prop. 8" Water (City of Wichita)

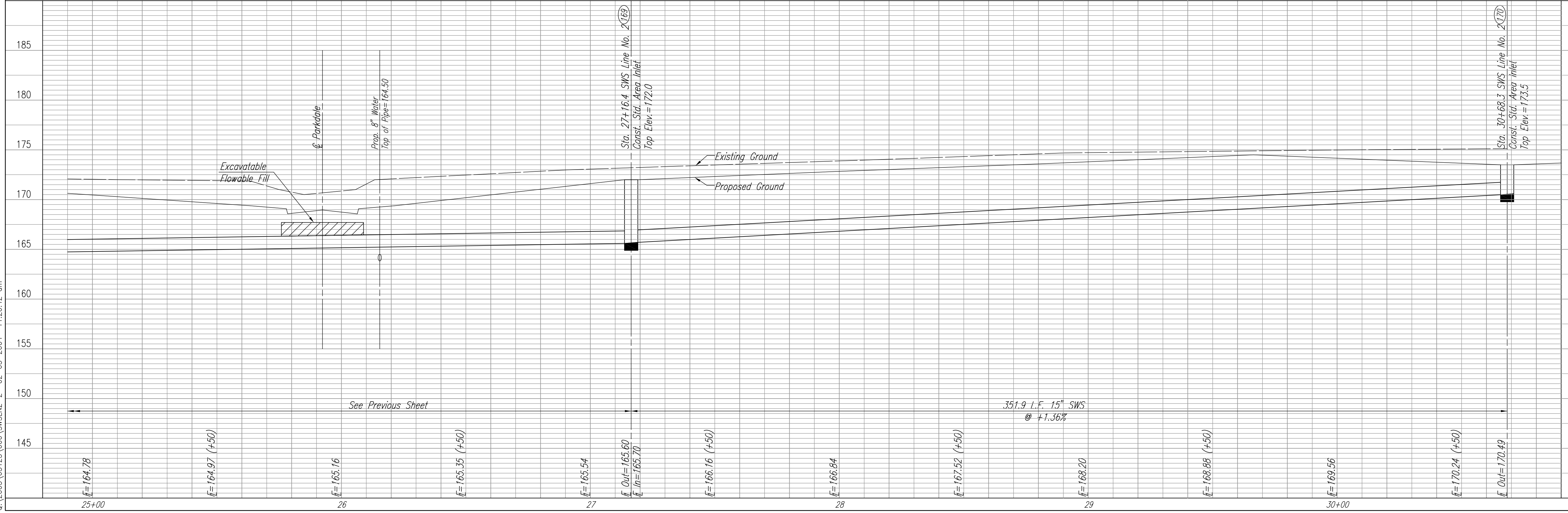
Sta. 27+16.4 SWS Line No. 2 Const. Std. Area Inlet L=5'-4", W=3'-10" Top Elev.=172.0 Install 351.9 L.F. 15" SWS (W) See Sheet No. 24.

SWS COORDINATES		
POINT NO.	N	E
169	8968.3617	2969.1967
170	8969.6658	2617.2986

Sta. 30+68.3 SWS Line No. 2 Const. Std. Area Inlet L=5'-4", W=3'-10" Top Elev.=173.5 See Sheet No. 24.

PROFILE	CHECKED	DATE
	CHECKED	

DSNR: BOB OPER: BUS SCALE: 1"=20.00
Q:\2003\03123\000\SWS\NS2-2 02-05-2004 11:20:42 am



STORM WATER SEWER
EVERGREEN 4TH

Professional Engineering Consultants, P.A.
303 S. TOPEKA • WICHITA, KANSAS 67202
316-262-2691 • FAX 316-262-3003

Designed By: BOB
Drawn By: BUS

Job No.: 35-03123
Date: March 2003

James L. Armour, P.E. - ACTING CITY ENGINEER
CITY OF WICHITA PROJECT NO. 472-83782