

PAVING AND INCIDENTAL DRAINAGE PLANS FOR

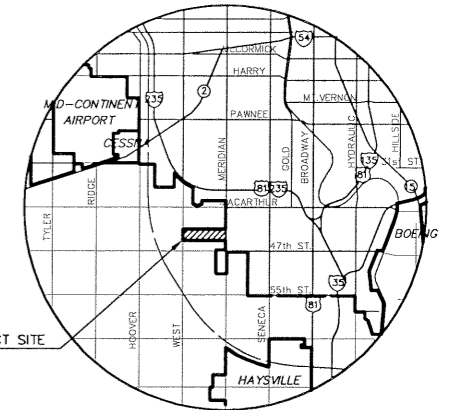
# THE LEGACY ADDITION PHASE 3

AN ADDITION TO THE CITY OF WICHITA  
SEDGWICK COUNTY, KANSAS

PROJECT NO. 472-83892

JIM ARMOUR, P.E. - ACTING CITY ENGINEER

OCA 765835



PROJECT SITE

LOCATION MAP

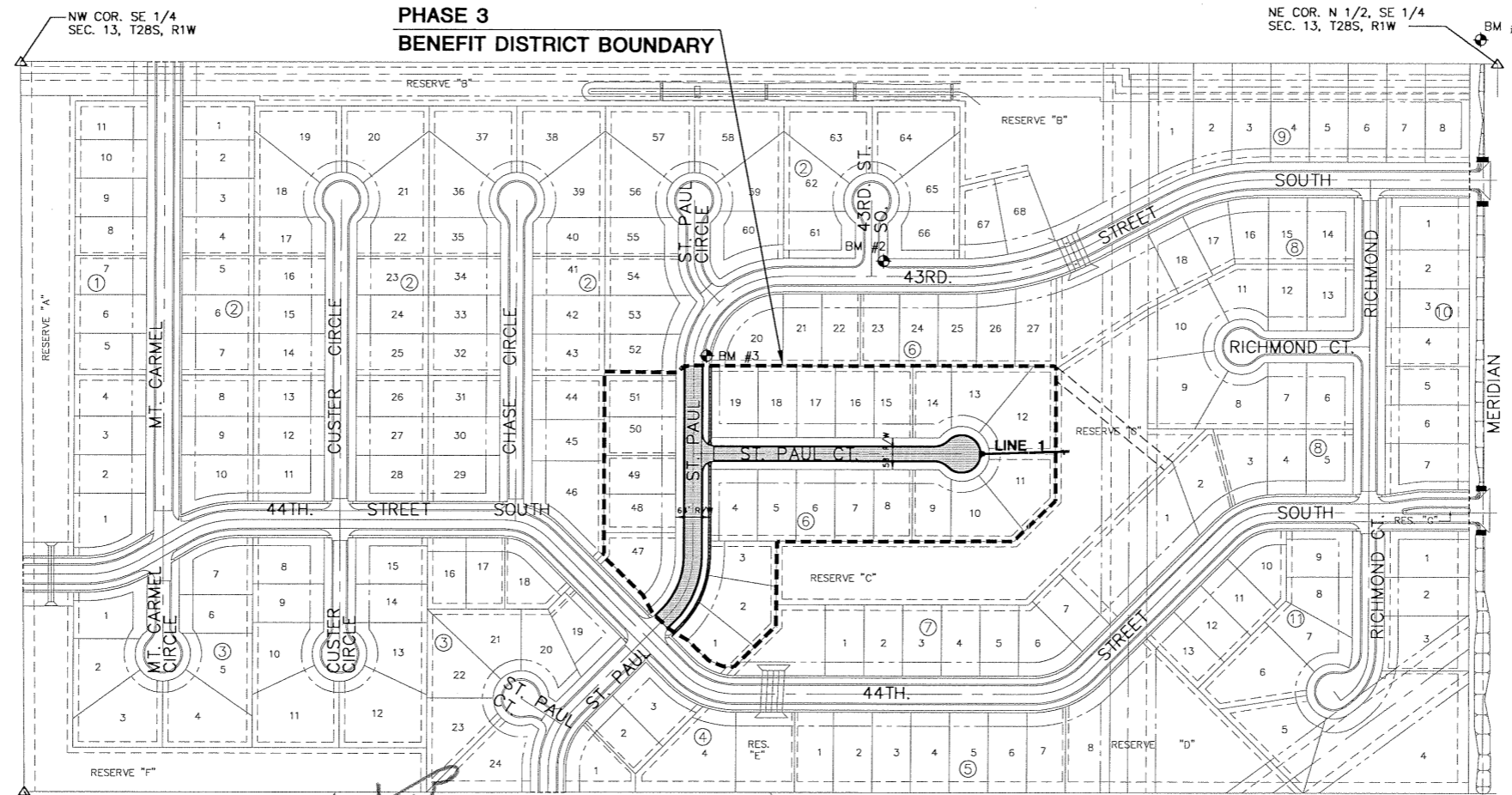
## GENERAL NOTES

- UNLESS SHOWN OR STATED OTHERWISE ON THESE DRAWINGS, MATERIALS AND CONSTRUCTION SHALL BE IN ACCORDANCE WITH CITY OF WICHITA CONCRETE PAVEMENT AND ASPHALTIC CONCRETE PAVEMENT SPECIFICATIONS.
- CONTRACTOR WILL BE REQUIRED TO PROVIDE A MINIMUM ADVANCE NOTICE OF SEVENTY-TWO (72) HOURS TO UTILITY COMPANIES PRIOR TO STARTING ANY EXCAVATION AS FOLLOWS:  
KANSAS ONE-CALL 1-800-344-7233  
OR 687-2470 (LOCAL WICHITA)

THE CONTRACTOR MUST NOTIFY THE FOLLOWING IN CASE OF AN EMERGENCY:

SBC (TELEPHONE)	800-870-8390
COX COMMUNICATIONS (CABLE)	262-0661
WESTAR (ELECTRIC)	261-6512
KANSAS GAS SERVICE (GAS)	832-3101
CITY OF WICHITA WATER & SEWER MAINT.	262-6000
AQUILA (GAS)	946-0096

- THE CONTRACTOR SHALL BE RESPONSIBLE FOR PRESERVING PROPERTY IRONS. THE CONTRACTOR WILL BE REQUIRED TO RE-ESTABLISH ANY PROPERTY IRONS WHICH ARE DAMAGED OR DESTROYED BY HIS CONSTRUCTION OPERATIONS. SUCH IRONS SHALL BE RE-ESTABLISHED BY A LICENSED LAND SURVEYOR IN ACCORDANCE WITH STATE LAWS.
- EXISTING UTILITIES AND THEIR LOCATIONS, AS SHOWN ON THE PLANS REPRESENT THE BEST INFORMATION OBTAINABLE FOR DESIGN. LOCATION INFORMATION HAS BEEN OBTAINED FROM THE VARIOUS UTILITY COMPANIES AND IS EITHER FROM COMPANY RECORD DRAWINGS OR COMPANY PROVIDED FIELD LOCATIONS. THE PLAN LOCATIONS SHOWN ARE NOT GUARANTEED. ADDITIONAL EXISTING UTILITIES MAY ALSO BE ENCOUNTERED.
- RUBBLE FROM THE REMOVAL OF MISCELLANEOUS STRUCTURES AND EXCESS EXCAVATION WHICH IS TO BE WASTED SHALL BE DISPOSED OF ON SITES TO BE PROVIDED BY THE CONTRACTOR. THESE SITES SHALL BE APPROVED BY THE ENGINEER AS TO SUITABILITY, APPEARANCE AND SITE LOCATION. LOCATIONS THAT, IN THE OPINION OF THE ENGINEER, WILL LEAVE AN UNSIGHTLY APPEARANCE WILL NOT BE APPROVED. ALL DISPOSAL SITES MUST BE APPROVED BY THE KANSAS DEPARTMENT OF HEALTH AND ENVIRONMENT. MATERIAL EITHER STOCKPILED OR DISPOSED OF IN A FLOOD PLAIN WOULD REQUIRE A KANSAS STATE BOARD OF AGRICULTURE PERMIT. ANY MATERIAL DUMPED IN WATERS OF THE UNITED STATES OR WETLANDS IS SUBJECT TO U.S. CORPS OF ENGINEERS PERMITTING REGULATIONS. ANY MATERIAL BURIED OR STOCKPILED BEYOND APPROVED CONSTRUCTION LIMITS WOULD REQUIRE ADDITIONAL ARCHAEOLOGICAL INVESTIGATIONS UNLESS BURIED IN A PREVIOUSLY APPROVED BORROW LOCATION.
- THIS PROJECT INCLUDES A CERTAIN AMOUNT OF ROLL TYPE CURB CONSTRUCTION. ROLL CURBS SHALL BE DEPRESSED THROUGH ALL DRIVEWAY OPENINGS WHEN SUCH DRIVES ARE CONSTRUCTED AS A PART OF THE PROJECT. NO MORE THAN 2 DRIVES 20 FEET IN WIDTH OR EQUIVALENT COMBINATIONS THEREOF ARE TO BE CONSTRUCTED WITH THIS PROJECT.
- TRANSITION CURB FROM FULL HEIGHT COMBINATION CURB AND GUTTER TO ROLL TYPE COMBINATION CURB AND GUTTER IS TO BE PAID AS BID FOR LINEAL FEET COMBINED CURB AND GUTTER (3 5/8" ROLL).
- A SAW CUT OF AT LEAST ONE-HALF THE DEPTH OF THE EXISTING SURFACE COURSES OR ONE-FOURTH THE DEPTH OF THE EXISTING TOTAL PAVEMENT THICKNESS SHALL BE PROVIDED AT LOCATIONS WHERE PROPOSED CONSTRUCTION ABUTS AN EXISTING SURFACE OR PAVEMENT FOR WHICH PARTIAL REMOVAL OF THAT SURFACE OR PAVEMENT IS REQUIRED. SAW JOINT TO FACILITATE REMOVAL WITHIN THREE (3) FEET OF EXISTING JOINTS WILL NOT BE PERMITTED AND FOR SUCH INSTANCES THE LIMITS OF REMOVAL SHALL EXTEND TO THE EXISTING JOINT. SUCH SAW CUTS WILL NOT BE PAID FOR DIRECTLY AND THIS COST SHALL BE CONSIDERED AS SUBSIDIARY TO THE REMOVAL OF SURFACE OR PAVEMENT.
- CONTRACTOR SHALL RESEED AND MULCH ALL DISTURBED AREAS. COST SHALL BE CONSIDERED SUBSIDIARY TO SITE RESTORATION.



SW COR. N 1/2, SE 1/4  
SEC. 13, T28S, R1W

NE COR. N 1/2, SE 1/4  
SEC. 13, T28S, R1W

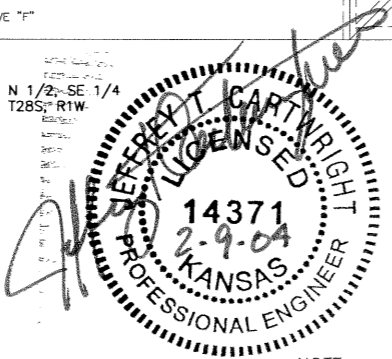
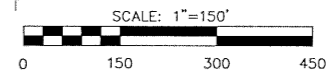
PHASE 3  
BENEFIT DISTRICT BOUNDARY

## INDEX TO DRAWINGS

SHEET NO.	DESCRIPTION
1	TITLE SHEET
2-7	PAVING DETAILS
8-9	PAVING PLANS
10	STORM WATER SEWER DETAILS
11	STORM WATER PLAN & PROFILE
12-16	EROSION DETAILS
17-22	CROSS SECTIONS
23	FINAL

### BENCHMARK

- BM #1 MERIDIAN AND 43RD ST. SOUTH  
C.O.W. BENCHMARK. 44' N &  
30' E OF 1/4 SEC. CORNER.  
ELEV.=93.395
- BM #2 BRASS DISC @ TC, SE RETURN  
NE CORNER OF INTERSECTION OF  
43RD ST. S CT. & 43RD ST. S  
ELEV.=95.10
- BM #3 CUT TC, E SIDE OF ST. PAUL  
ACROSS FROM DRIVE @ 4423 ST. PAUL  
ELEV.=95.30



LENGTH OF PROJECT	
29' BK.-BK.	450 FT.
35' BK.-BK.	482 FT.

EARTHWORK SUMMARY	
EXCAVATION	306.0 C.Y.
LOOSE FILL	1601.9 C.Y.
COMPACTED FILL	239.3 C.Y.

**LEGEND**  
 AREA TO PLACE EXCESS EXCAVATION  
 (SEE PAVING CROSS SECTIONS)

**NOTE:**  
 - NO SHRINKAGE/EXPANSION FACTOR WERE FIGURED INTO EARTHWORK QUANTITIES MEASURED.  
 - THE DIFFERENCE IN EARTHWORK SHALL BE PLACED IN SIMILAR MANNER ONTO FUTURE PHASES.



**THE LEGACY ADDITION**  
PROJECT NAME

**PAVING PLANS - PHASE 3**  
SHEET TITLE

MKEC DESIGN BY:	DAC DRAWN BY:	JTC CHECKED BY:
FEBRUARY 2004 DATE	13264ET JOB NO.	1 / 23 SHEET/OF