

AUBURN HILLS PAVING W/STREET & INCIDENTAL STORM WATER SEWER

to serve

AUBURN HILLS 15TH ADDITION

CITY OF WICHITA, KANSAS

Jim Armour, P.E. Acting City Engineer

Project Number

472-83930

O.C.A. Number

765841

GENERAL NOTES:

1. Contractor will be required to provide notice to utility companies a minimum of twenty-four (24) hours prior to any excavation, as follows:

Kansas One-Call	687-2470
-----------------	----------

The Contractor must notify the following in case of an emergency:

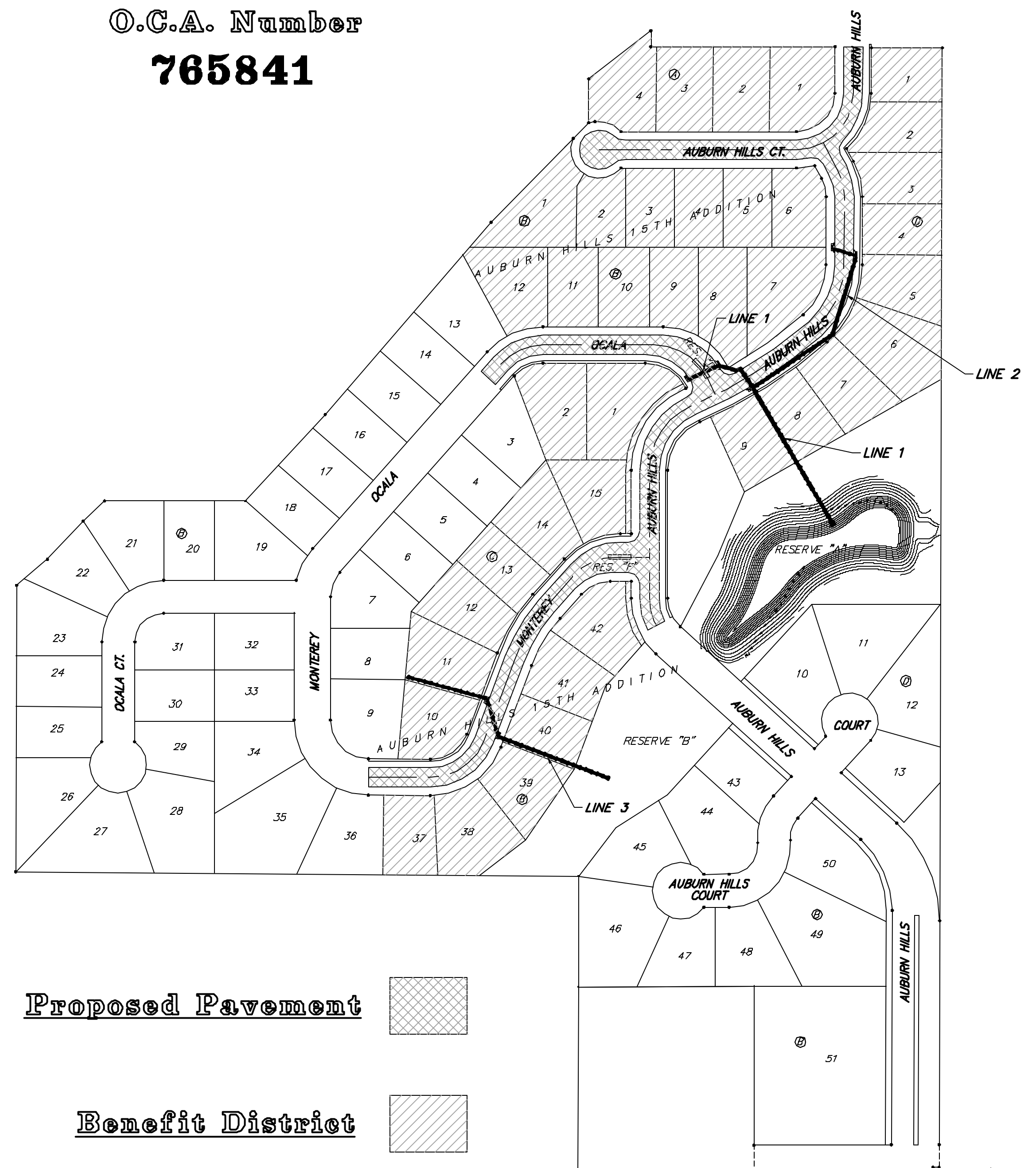
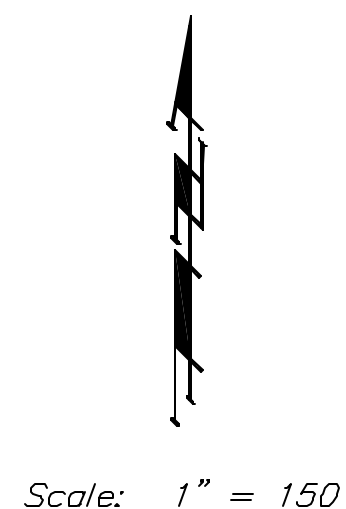
Cox Communications	262-4270
Kansas Gas Service	1-888-482-4950
Westar Energy	383-8650
Aquila Energy	1-800-303-0357
SBC	268-2245
City of Wichita Water Dept.	268-4563
City of Wichita Sewer Maint.	268-4024
City of Wichita Storm Sewer Maint.	268-4090
City of Wichita Traffic Maint.	268-4034
Conoco Pipeline Co.	1-800-231-2551
Southern Star Pipeline Co.	529-6600
Phillips Pipeline Co.	1-800-766-8230
2. Utility service lines, poles, valve boxes, meters, and etcetera are to be adjusted as necessary by others prior to construction unless the plans specifically call for their adjustment by the Contractor or unless the plans specifically identify a utility to be adjusted by its owner during construction. Existing utilities and their location, as shown on the plans, represent the best information obtainable for design. The Contractor will be required to work around existing utilities within the right-of-way which do not conflict with proposed construction.
3. Rubble from the removal of miscellaneous structures and excess excavation which is to be wasted shall be disposed of on sites to be provided by the Contractor. These sites shall be approved by the Engineer as to suitability, appearance and site location. Locations, in the opinion of the Engineer, will leave an unsightly appearance will not be approved. All disposal sites must be approved by the Kansas Department of Health and Environment. Material either stockpiled or disposed of in a flood plain would require a Kansas State Board of Agriculture permit. Any material dumped in waters of the United States or wetlands is subject to U.S. Corps. of Engineers permitting regulations. Any material buried or stockpiled beyond approved construction limits would require additional archaeological investigations unless buried in a previously approved borrow location.
4. Trees and shrubs in public right-of-way which are in direct conflict with proposed new construction shall be removed by the Contractor with the Engineer's approval. Trees and shrubs which are not in direct conflict with proposed new construction shall be saved and protected from damage.
5. The Contractor shall give all property owners and/or tenants of developed property abutting the construction of this project a minimum of ten (10) days advance notice prior to start of construction.
6. The Contractor shall be responsible for preserving property irons. The Contractor will be required to re-establish any property irons which are damaged or destroyed by his construction operations. Such irons shall be re-established by a licensed land surveyor in accordance with state laws.
7. All existing and proposed erosion control measures including silt fencing, erosion control mat, straw bales, inlet barriers, and const. entrance shall be maintained throughout construction by the contractor and until project is accepted by the City of Wichita. The on-site engineer shall complete weekly reports on the status of erosion control measures. The contractor shall be required to comply with maintenance and/or replacement of erosion control measures as determined by the on-site engineer until project is accepted by City of Wichita. Maintenance and/or replacement of erosion control measures to be paid by L.S. bid item "Erosion Control BMP's."
8. The contractor shall adjust valve boxes as necessary to match proposed grade. Cost to be included in bid item, "Site Clearing & Restoration."
9. All areas disturbed during construction within Reserve "A" and within street R/W, adjacent to pavement, shall be seeded, mulched, and fertilized as follows unless otherwise noted (Permanent Seeding):

Seed: Kansas Premium Fescue Blend:	8 lbs./1000 sq. ft.
Mulch: Prairie Hay:	2 tons/acre
Fertilizer:	12-24-12: 850 lbs./acre

All other areas disturbed during construction shall be seeded and mulched as follows (Temporary Seeding):

Seed: Rye Grass:	5 lbs./1000 Sq. Ft.
Mulch: Prairie Hay:	2 tons/acre

All costs associated with seeding, mulching, and fertilizing shall be included in bid item "Project Seeding." All seeding operations shall conform to City of Wichita Standard Specifications.
10. Contractor shall install Reinforced Concrete Pipe in street right-of-way as shown on the plan sheets. At all other locations, contractor may install SWS Pipe including HDPE Pipe and pipe meeting City of Wichita Standard Specifications.



Project Earthwork Totals		
	Excavation	Fill
Pond	17,997	0
Mass Grading	23,330	40,211
Paving	4,687	5,318
Total	46,014 (cy)	45,529 (cy)
Total Project Length		
2,807 L.F. = 0.53 Miles		

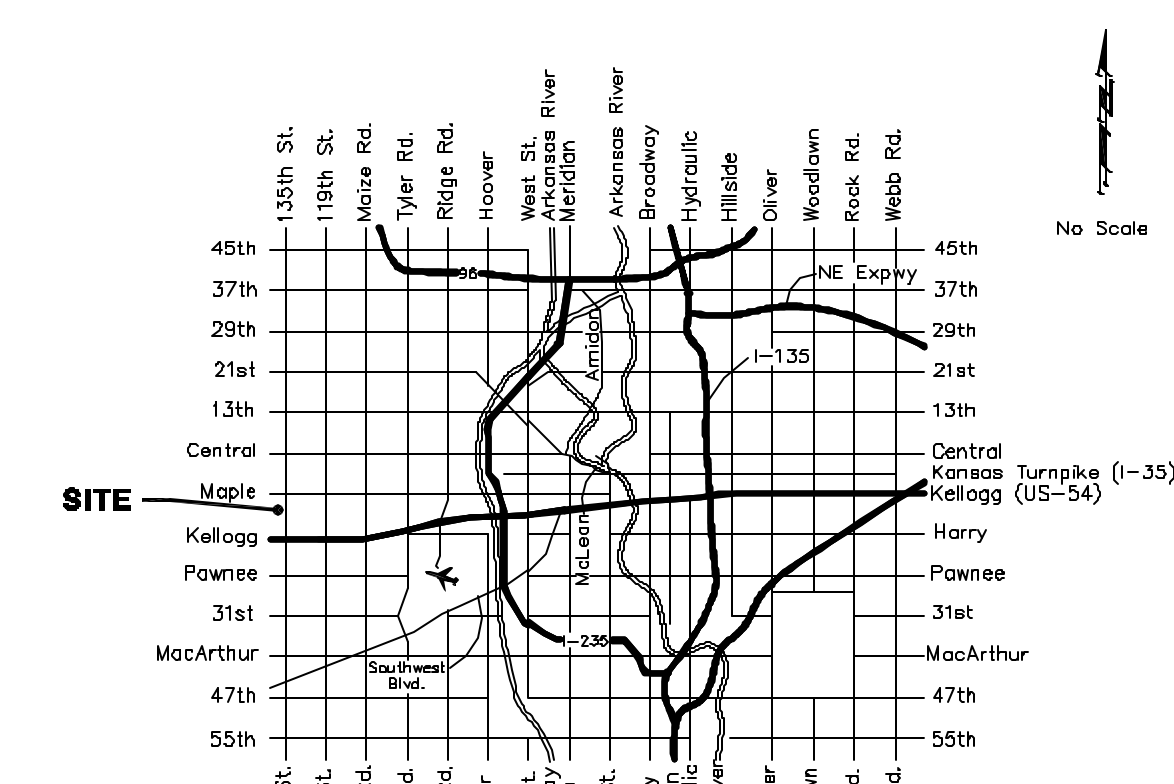
Sheet Index

Title Sheet	1
35' Pavement Detail	2
Sign Detail	3
Entrance Detail	4
Valley Gutter Detail	5
Rip-Rap Detail	6
Auburn Hills	7-9
Monterey	10-11
Ocala	12
Auburn Hills Ct.	13
SWS Line 1	14
SWS Line 2	15
SWS Line 3	16
Manhole Adjustments	17
Pond Plan	18
Mass Grading	19-20
Standard Manhole Detail	21
Manhole Ring & Cover Detail	22
Special Yard Inlet Detail	23
Std. Type 1A Double Inlet Detail	24
Headwall Detail	25
Erosion Control BMP's	26-30
Pond Cross Sections	31-34
Earthwork Cross Sections	35-47
Copy of Plat	48

BENCHMARKS:

City Disc In T.C. Adj. to F.H.
38' South of intersection of
Onewood and Auburn Hills.
Elev. = 178.48 (City Datum)

"□" cut in south curb of
Onewood 272' west of C.L.
Auburn Hills.
Elev. = 179.73 (City Datum)



Vicinity Map