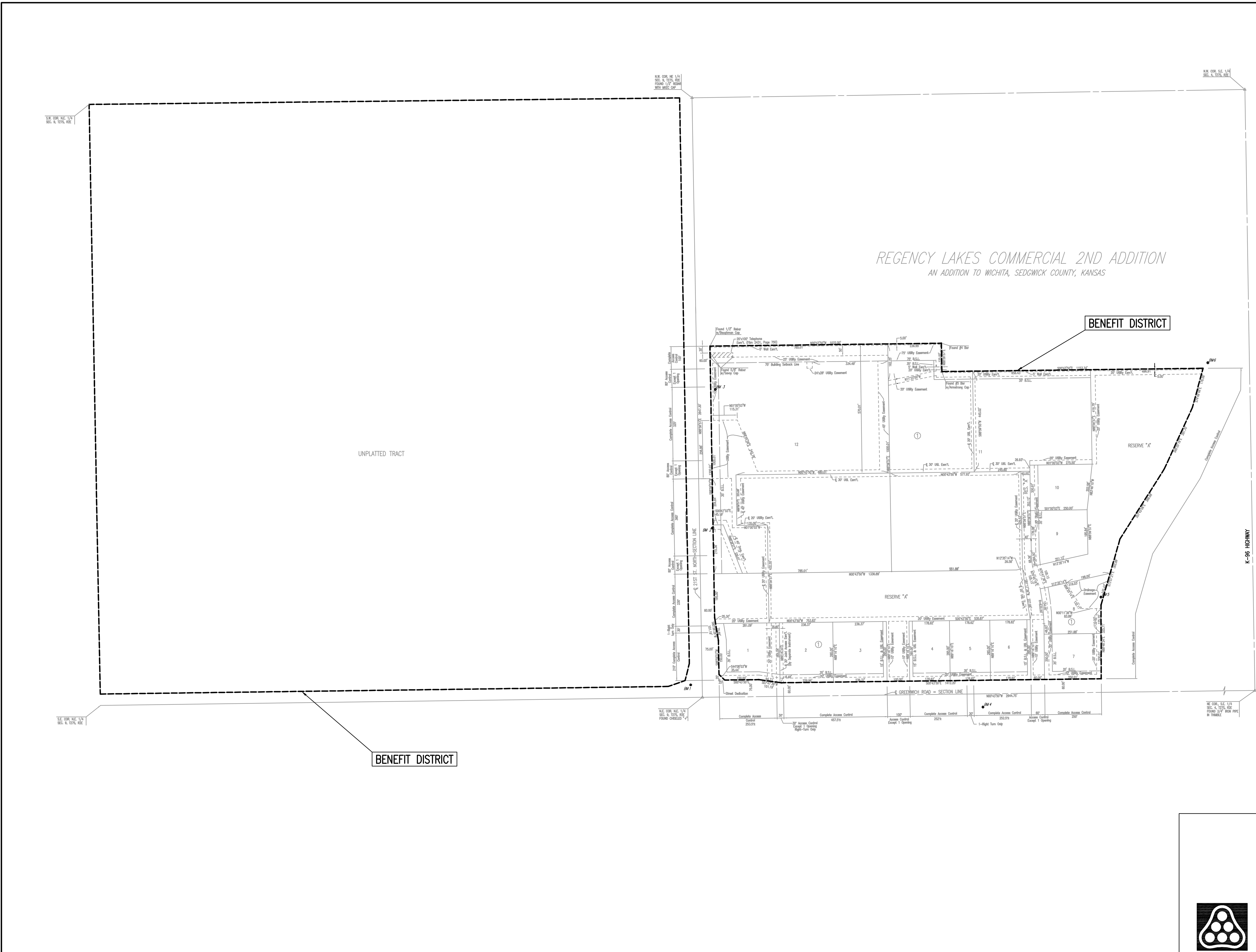


DSNR: BER OPER: SAW SCALE: 1"=200.00
 J:\SENTOUT\2004\04106\001\02-BenefitDistrict 03-26-2004 11:21:17 am



REGENCY LAKES COMMERCIAL 2ND ADDITION
 AN ADDITION TO WICHITA, SEDGWICK COUNTY, KANSAS

BENEFIT DISTRICT

UNPLATTED TRACT

BENEFIT DISTRICT



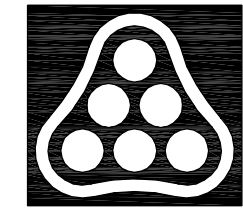
SCALE: 1"=200'

- = FOUND #5 BAR W/KECC CAP (UNLESS OTHERWISE NOTED)
- = SET 1/2" REBAR W/ PEG CAP (UNLESS OTHERWISE NOTED)

- BENCHMARKS:**
 C.O.W. Disc in Conc. Base R.R. Signal W. Side Greenwich
 ± 1/2 Mile S. of 21st St. N. City Datum: 183.19
 N.G.V.D.: 1370.59
- BM 1: Chiseled "d" Conc. base Traffic Signal at S.W. Corner 21st. N. and Greenwich
 City Datum: 176.16
 N.G.V.D.: 1363.56
- BM 2: Chiseled "d" on headwall N.E. Corner RCBC under 21st. N. 750'± W. of Greenwich
 City Datum: 175.05
 N.G.V.D.: 1362.45
- BM 3: R.R. Spike in 18" Locust tree, E. end row on N. Side 21st N. 1350'± W. of Greenwich
 City Datum: 180.14
 N.G.V.D.: 1367.54
- BM 4: W. end Bolt in Power Pole 1½ above ground at Private Dr. 2400 N. Greenwich on E. side of Rd.
 City Datum: 183.80
 N.G.V.D.: 1371.20
- BM 5: Chiseled "d" on W. wing wall at W. end of S. headwall RCBC under Bike Path just S. of K-96 E.B. Ramp to Greenwich 400'± from Greenwich.
 City Datum: 179.87
 N.G.V.D.: 1367.27
- BM 6: Chiseled "d" on S.E. Cor. RCBC under Bike Path just S. of K-96, near N.W. Cor. Property
 City Datum: 182.975
 N.G.V.D.: 1370.375

MINIMUM PAD ELEVATIONS (LOWEST OPENING) SHALL BE AS FOLLOWS:

BLOCK	CITY DATUM	N.G.V.D.
LOTS 1-3	180.6	1368.0
LOTS 4-11	181.1	1368.5
LOT 12	180.6	1368.0



No.	Revision	By	Date
CITY OF WICHITA, KANSAS JAMES L. ARMOUR, P.E. - ACTING CITY ENGINEER 21ST STREET NORTH AND REGENCY LAKES BENEFIT DISTRICT CITY OF WICHITA PROJECT NO. 472-83954 Professional Engineering Consultants, P.A. 303 S. TOPEKA • WICHITA, KANSAS 67202 316-262-2691 • FAX 316-262-3003			
Designed by	BER	Job No.	04106-001
Drawn by	SAW	Date	MARCH 2004
			Sht. 2 of 8