

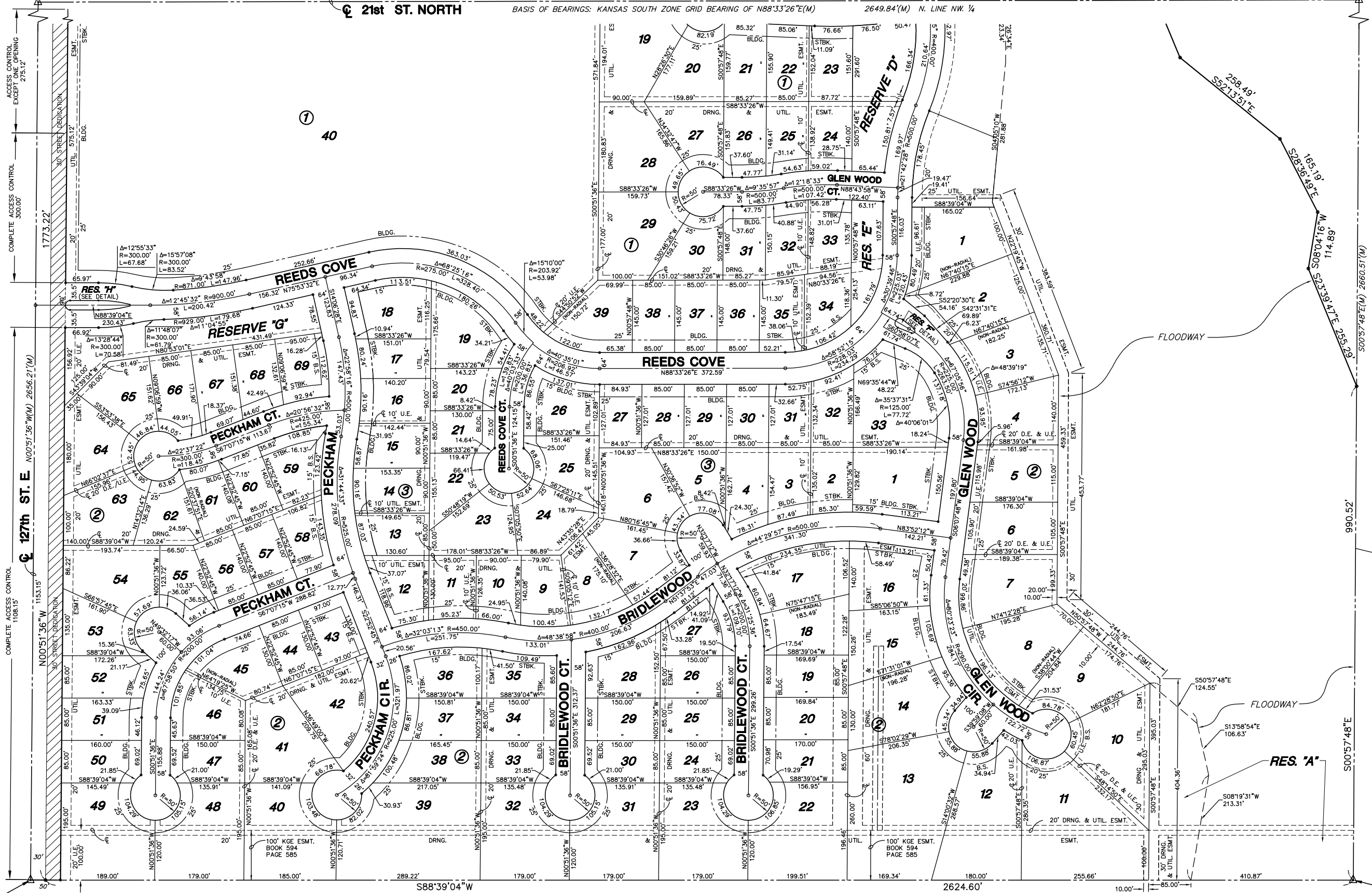
# FINAL PLAT

## REED'S COVE ADDITION

### AN ADDITION TO WICHITA, SEDGWICK COUNTY, KANSAS

NW Cor., NW 1/4, Sec. 11,  
T27S, R2E, 6th P.M.  
Fnd. 3/4" Pipe in Thimble

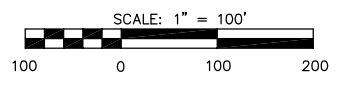
NE Cor., NW 1/4, Sec. 11,  
T27S, R2E, 6th P.M.  
Fnd. 3/4" Pipe



MINIMUM PAD ELEVATIONS (LOWEST OPENINGS)			
LOT	BLOCK	ELEVATION (CITY DATUM)	ELEVATION (USGS)
1	1	166.1	1353.5
2	1	166.1	1353.5
4	1	166.1	1353.5
5	1	166.1	1353.5
9	1	169.6	1357.0
10	1	169.1	1356.5
11	1	168.1	1355.5
12	1	168.1	1355.5
13	1	166.6	1354.0
14	1	166.6	1354.0
15	1	168.1	1355.5
16	1	168.1	1355.5
17	1	169.1	1356.5
18	1	169.6	1357.0
1	2	165.6	1353.0
2	2	165.6	1353.0
3	2	165.6	1353.0
4	2	165.6	1353.0
5	2	165.6	1353.0
6	2	165.6	1353.0
7	2	165.6	1353.0
8	2	163.6	1351.0
9	2	160.8	1348.2
10	2	160.7	1348.1

**NOTE**

Please contact Westar Energy (or its successor) Electric Transmission Engineering Department (currently 785-575-8167) before conducting any proposed construction activities that could place people, equipment, or facilities within Westar Energy easement shown on this plat, designated as Book 594, Page 585 dated January 3, 1967.



**LEGEND**

- △ = SECTION CORNER MONUMENT FOUND
- = FOUND PROPERTY CORNER REBAR
- = SET 5/8" REBAR W/ MKEC CLS #39 CAP
- B.S. = BUILDING SETBACK
- U.E. = UTILITY EASEMENT
- (M) = MEASURED DIMENSION

SW Cor., NW 1/4, Sec. 11, T27S, R2E, 6th P.M., Fnd. 3/4" Pipe in Thimble

SE Cor., NW 1/4, Sec. 11, T27S, R2E, 6th P.M., Fnd. Stone

BURLINGTON NORTHERN RAILROAD

H:\CIVIL\2021\DWG\PAV\PHASE3\02121A2.DWG