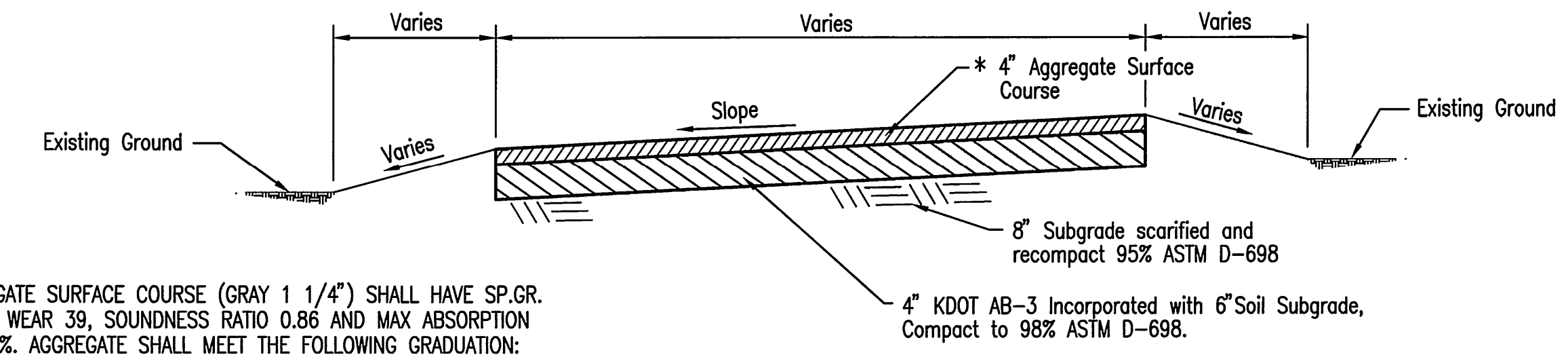


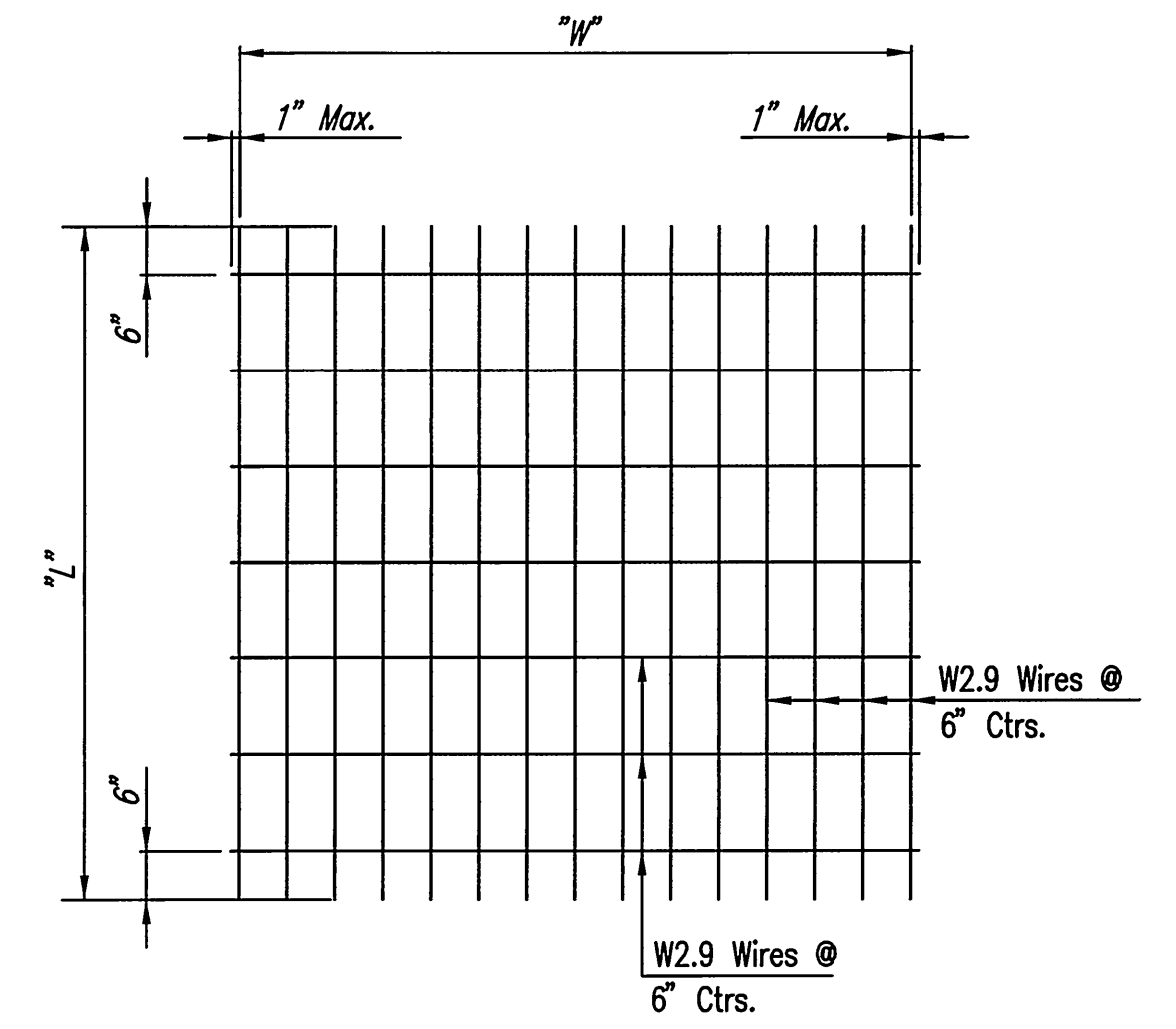
PAVING JOINT PLAN
1"=10'



* AGGREGATE SURFACE COURSE (GRAY 1 1/4") SHALL HAVE SP.GR. 2.3, % WEAR 39, SOUNDNESS RATIO 0.86 AND MAX ABSORPTION OF 4.6%. AGGREGATE SHALL MEET THE FOLLOWING GRADUATION:

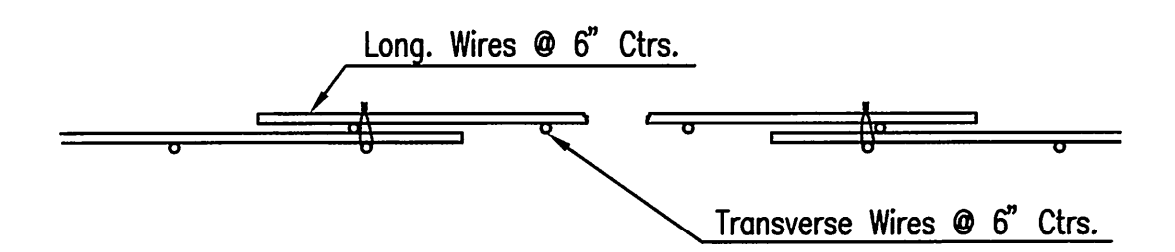
SIEVE	% RETAINED
1"	24-28
3/4"	75-85
1/4"	95-100
#200	98-100

AGGREGATE DRIVE SECTION
NOT TO SCALE



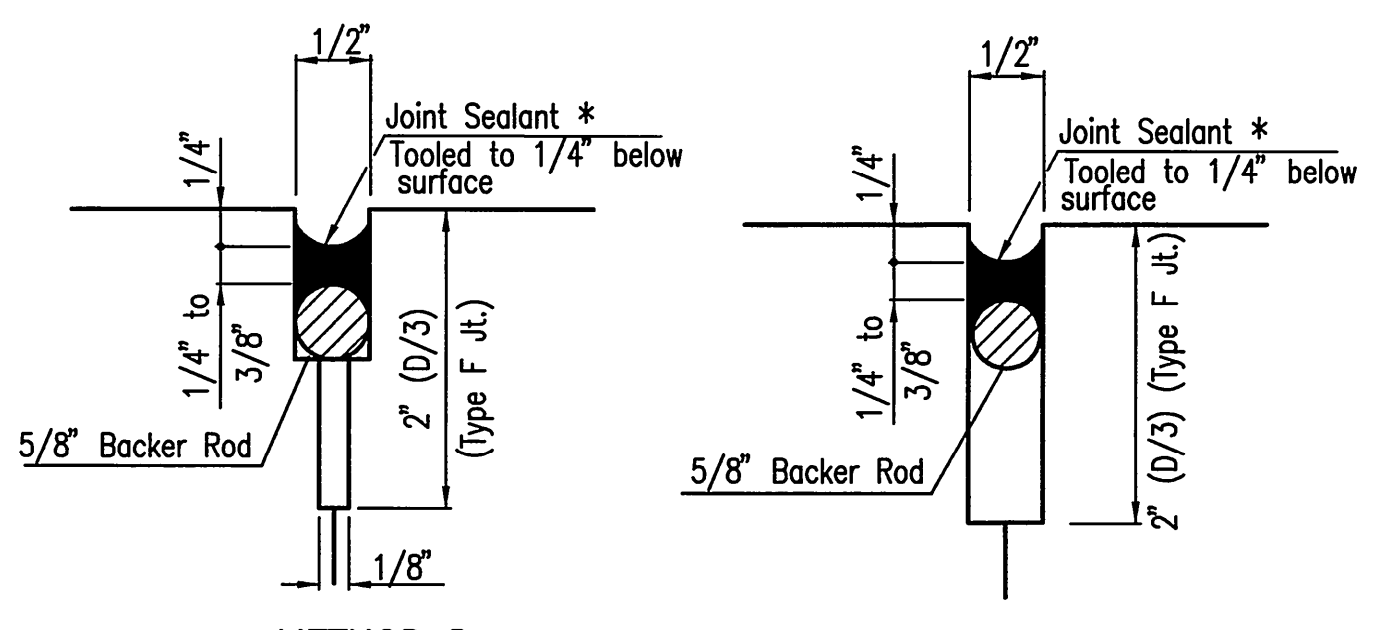
TYPICAL SHEET OF WELDED WIRE MESH

"L" = Panel length varies
"W" = Panel width varies



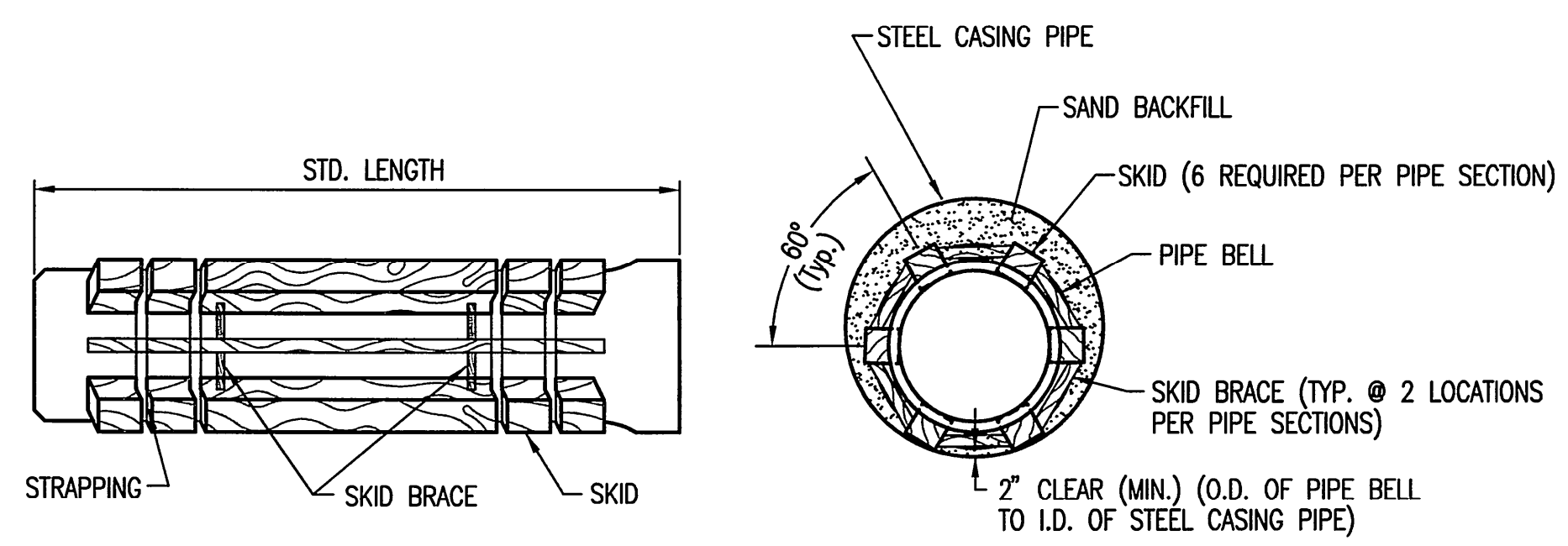
DETAIL OF LAP FOR WIRE MESH

NOTE: THE LAP SHALL EXTEND BEYOND THE FIRST TRANSVERSE WIRE OF EACH SHEET. THE SHEETS SHALL BE WIRED SECURELY AT THE EDGES AND AT INTERVALS NOT TO EXCEED 2'-6" FOR THE FULL WIDTH OF THE SHEET. APPROX. WEIGHT OF WIRE MESH = 42 LBS. PER 100 SQ.FT. OTHER METHODS FOR FASTENING THE SHEETS OF WIRE MESH AT THE LAPS MAY BE USED WITH THE APPROVAL OF THE ENGINEER. WELDED WIRE MESH MUST ALSO BE INSTALLED PER STRUCTURAL REQUIREMENTS LISTED ON SHEET S0.1.



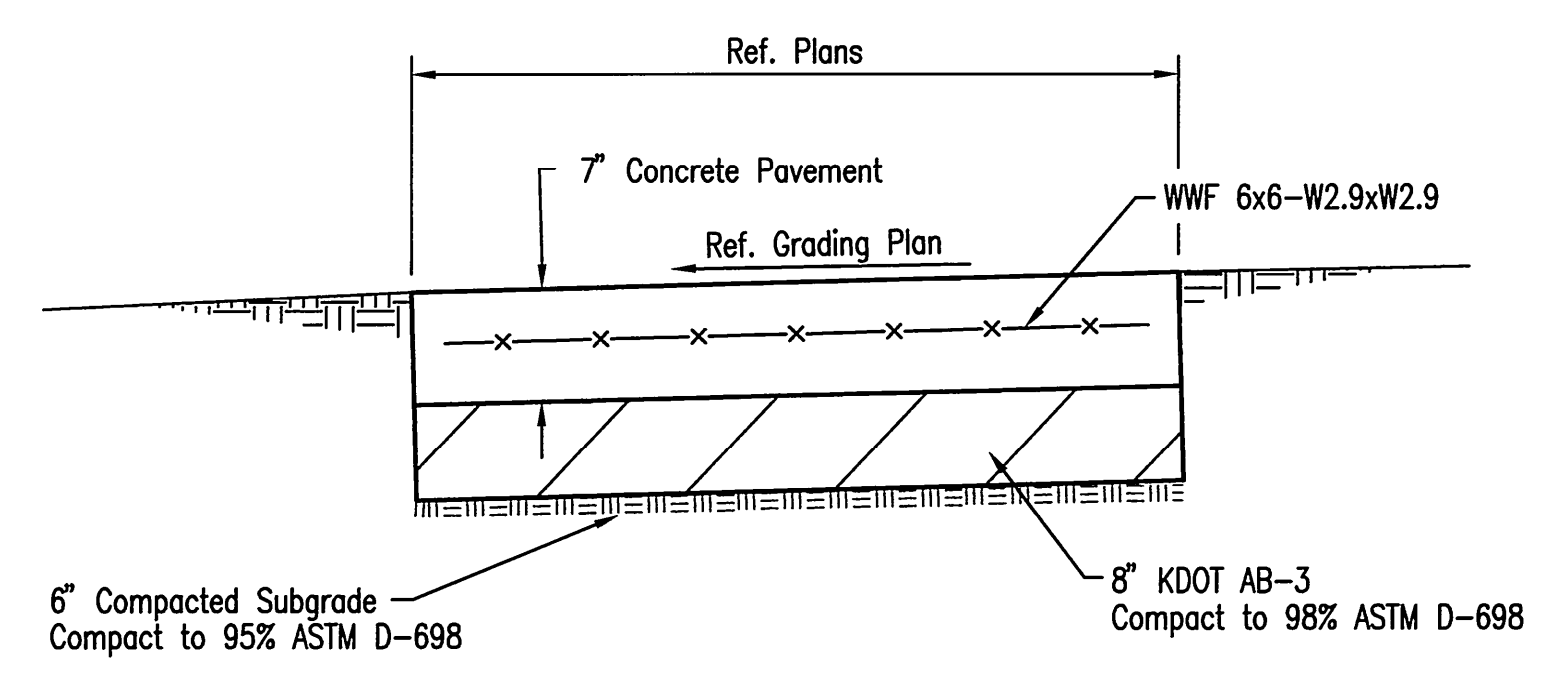
METHOD I **METHOD II**
DETAIL 2
JOINT SEAL DETAILS

* Silicone Type Joint Sealant
Ref. Spec. Section 02522

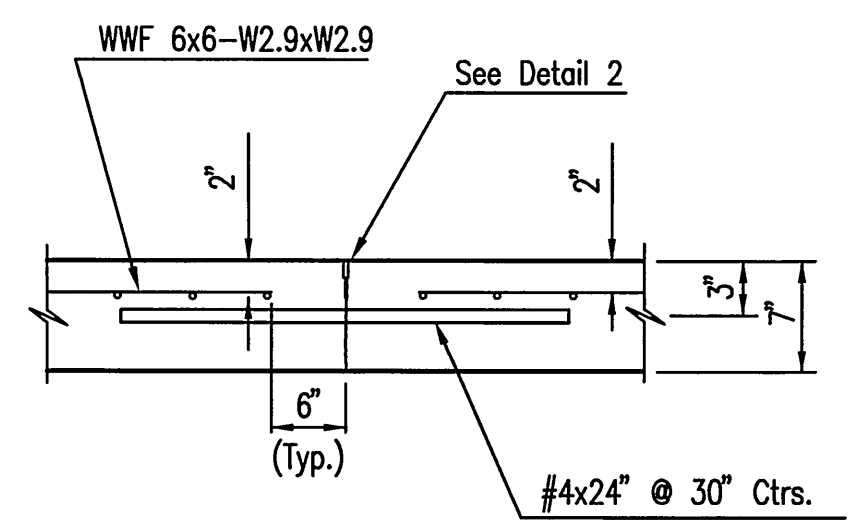


STEEL ENCASEMENT DETAIL

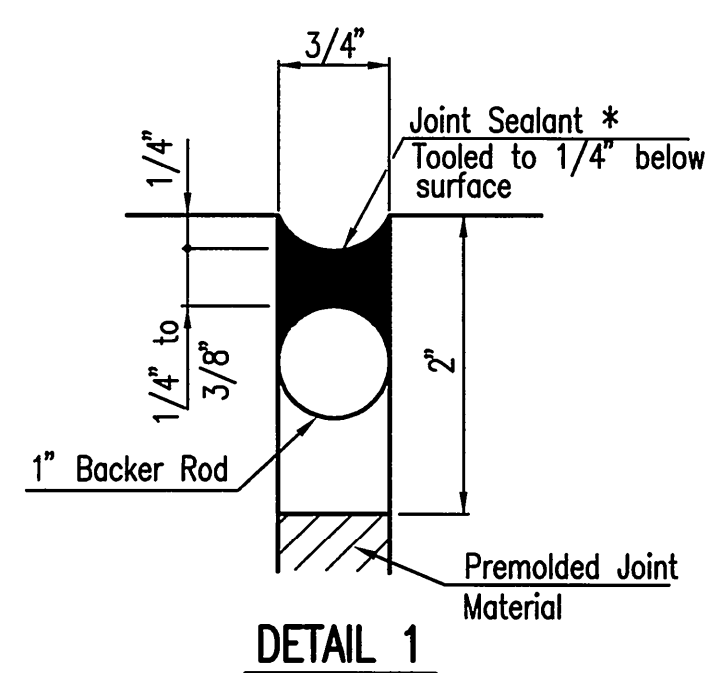
* ENDS OF ENCASEMENT PIPE SHALL BE SEALED WITH FLEXIBLE SYNTHETIC RUBBER SEALED ENDS, SECURED WITH STAINLESS STEEL BANDS.



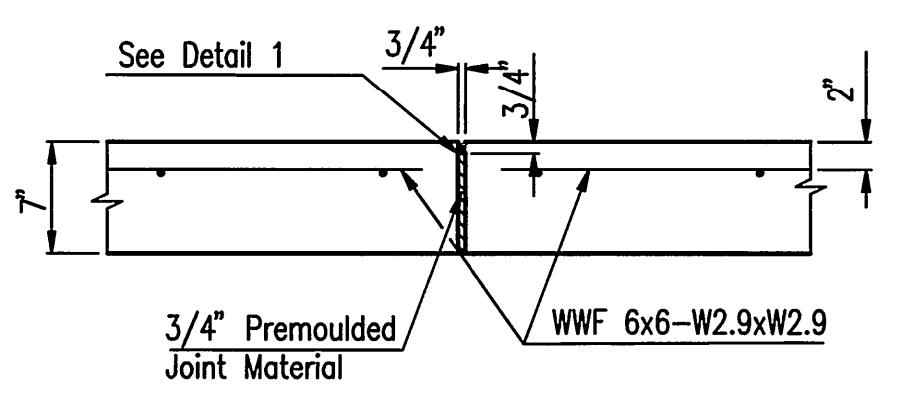
TYPICAL CONCRETE PAVEMENT SECTION



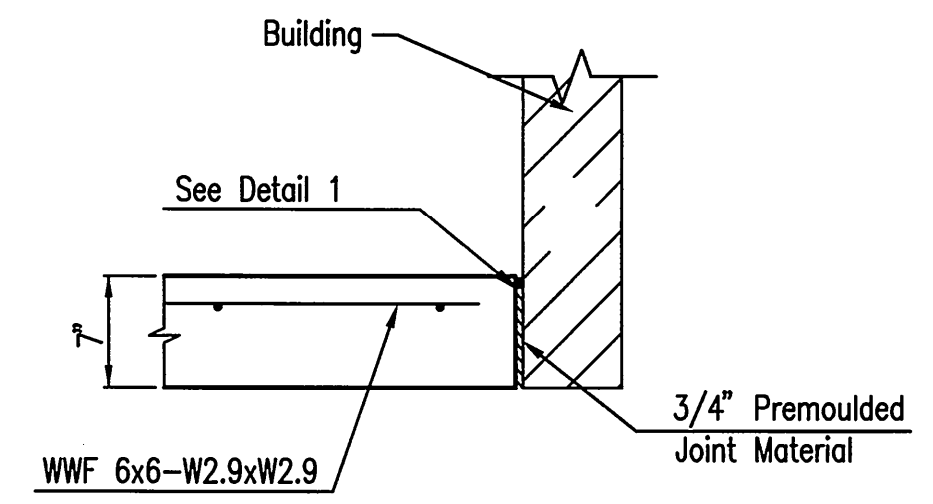
SAW JOINT
TYPE F (TIED)
TYPE FU (UNTIED)



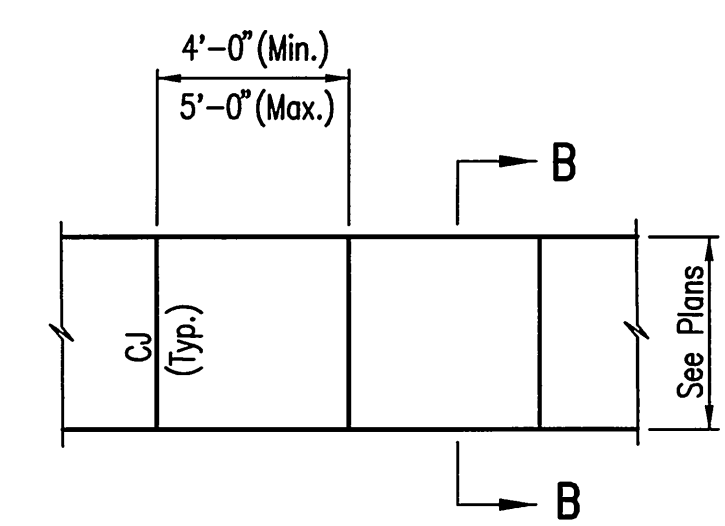
DETAIL 1



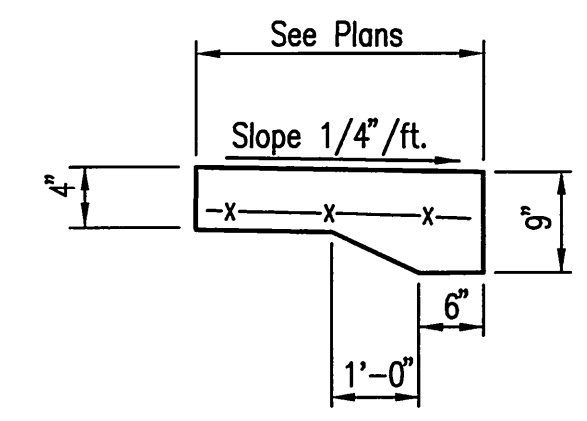
ISOLATION JOINT (I)



ISOLATION JOINT (I)

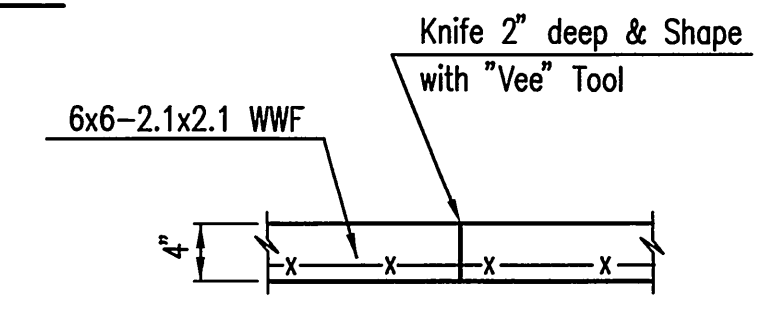


PLAN



SECTION B-B

*Provide thickened edge at areas adjacent to drives and parking areas

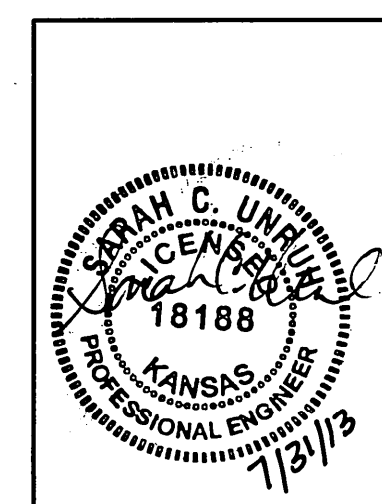


CONTRACTION JOINT (CJ)

Note: No sawn contraction joints will be allowed

SIDEWALK/MOW STRIP DETAILS

Note: The Mow Strip shall be 2'-0" wide.
Ref. Plans for Sidewalk Width.



No.	Revision	By	Date
SEDGWICK COUNTY RURAL WATER DISTRICT #1 WATER DISTRIBUTION SYSTEM IMPROVEMENTS PAVING AND MISCELLANEOUS DETAILS GARY JANZEN, P.E. - CITY ENGINEER CITY OF WICHITA PROJECT NO. 448-90565			
		PROFESSIONAL ENGINEERING CONSULTANTS, P.A. 303 SOUTH TOPEKA WICHITA, KS 67202 316-262-2691 www.pec1.com	
Designed by	SCU	Job No.	34-11123
Drawn by	CAE	Date	JULY 2013
			Sht. PD2 of 24

Saved: 07-29-2013 8:39:08 AM by CLM
 Project: 34-11123 07-29-2013 8:39:08 AM by GARY, MAI
 C:\2011\11123\11123-902 Paving Details